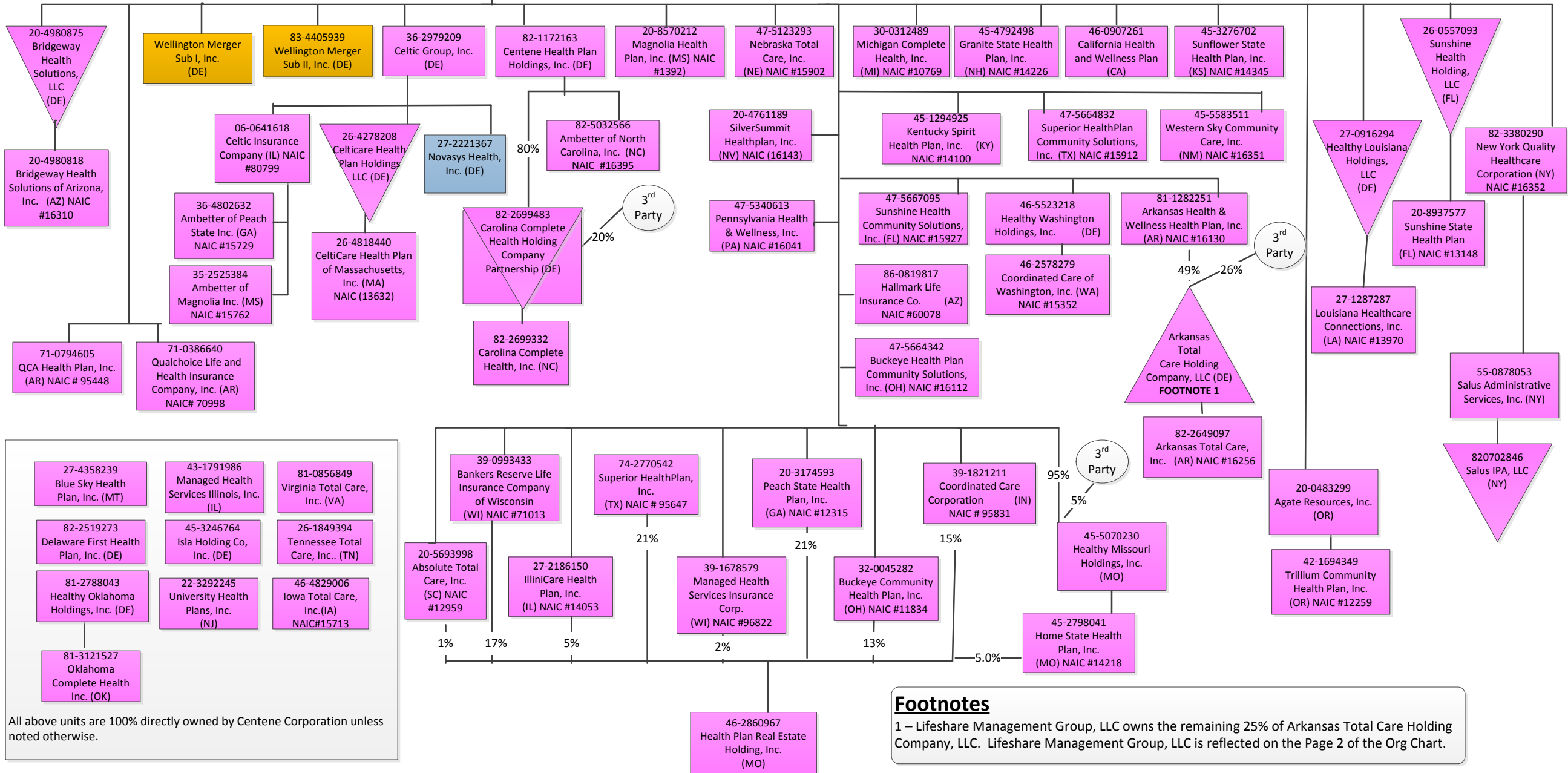


**Centene Corporation & Subsidiaries
Organizational Chart**
Last Updated: April 17, 2019
Page 1 – Managed Care Segment

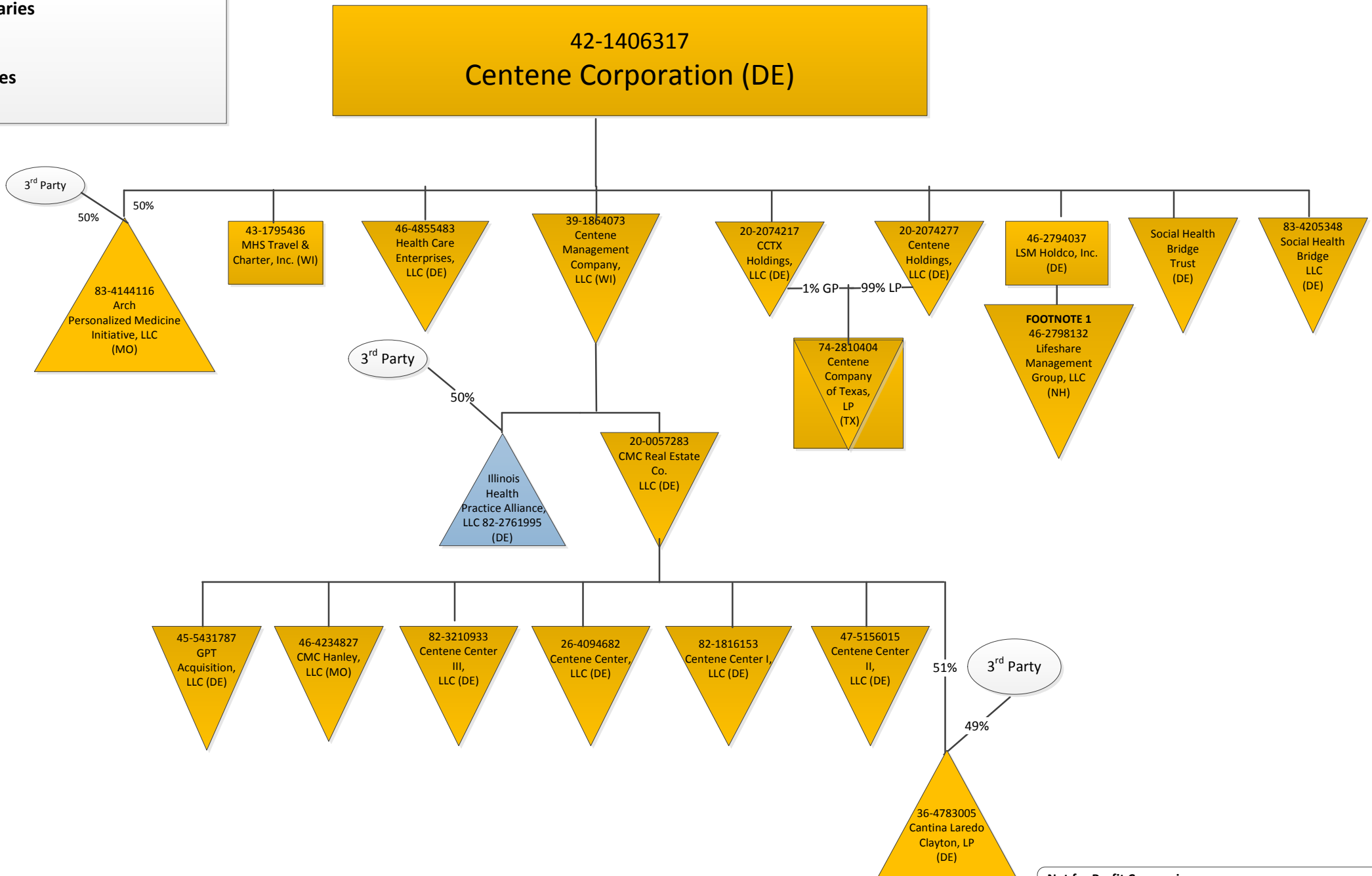
**42-1406317
Centene Corporation (DE)**

- Management Companies (p2)
- AcariaHealth (p4)
- Health Net (p6)
- International (p8)
- KSA (p10)
- Specialty Segment (p3)
- USMM (p5)
- Centurion (p7)
- Next Door Neighbors (p9)



All above units are 100% directly owned by Centene Corporation unless noted otherwise.

Footnotes
1 – Lifeshare Management Group, LLC owns the remaining 25% of Arkansas Total Care Holding Company, LLC. Lifeshare Management Group, LLC is reflected on the Page 2 of the Org Chart.



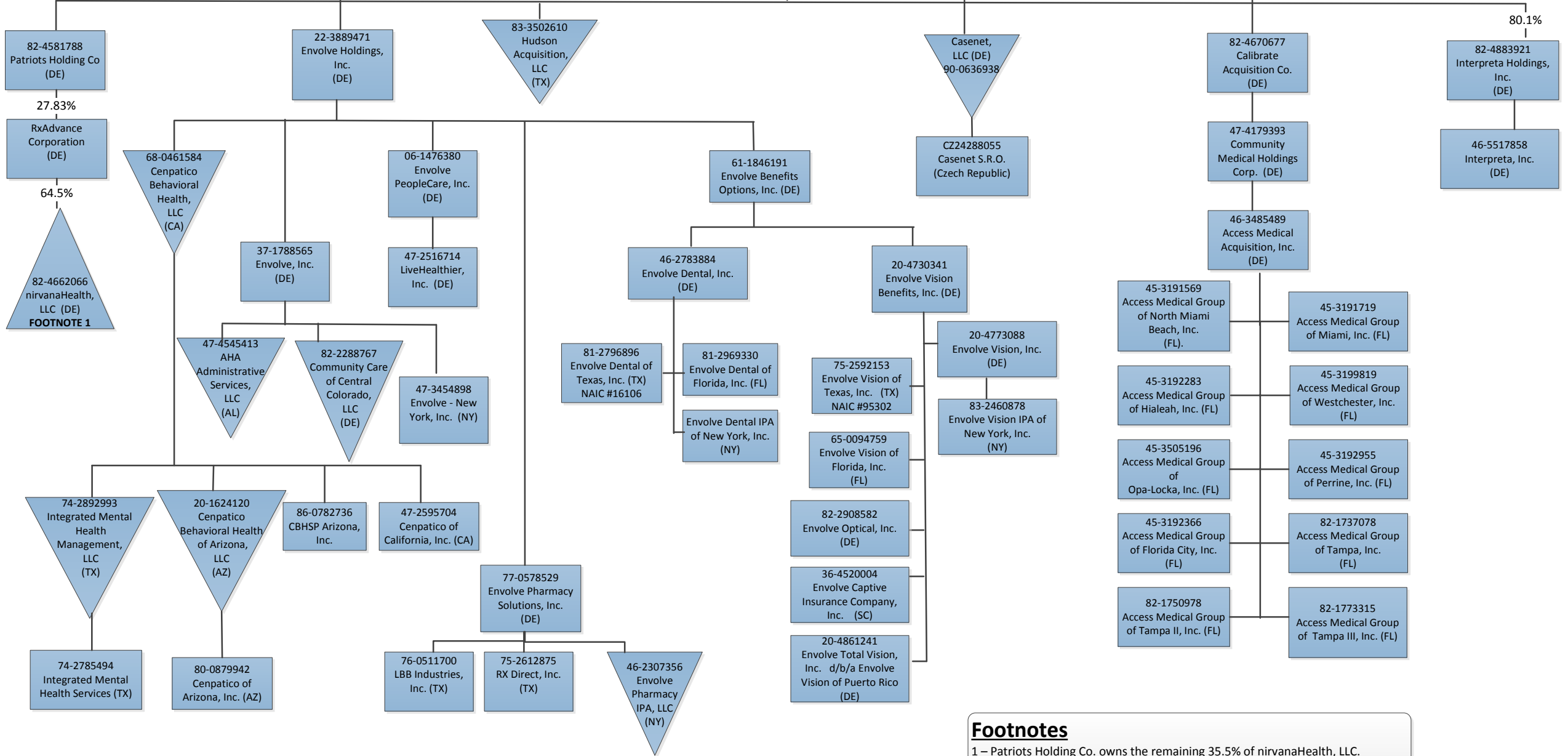
Footnotes

1 – Lifeshare Management Group, LLC owns 25% of Arkansas Total Care Holding Company, LLC. Arkansas Total Care Holding Company, LLC is reflected on Page 1 of the Org Chart.

Not for Profit Companies

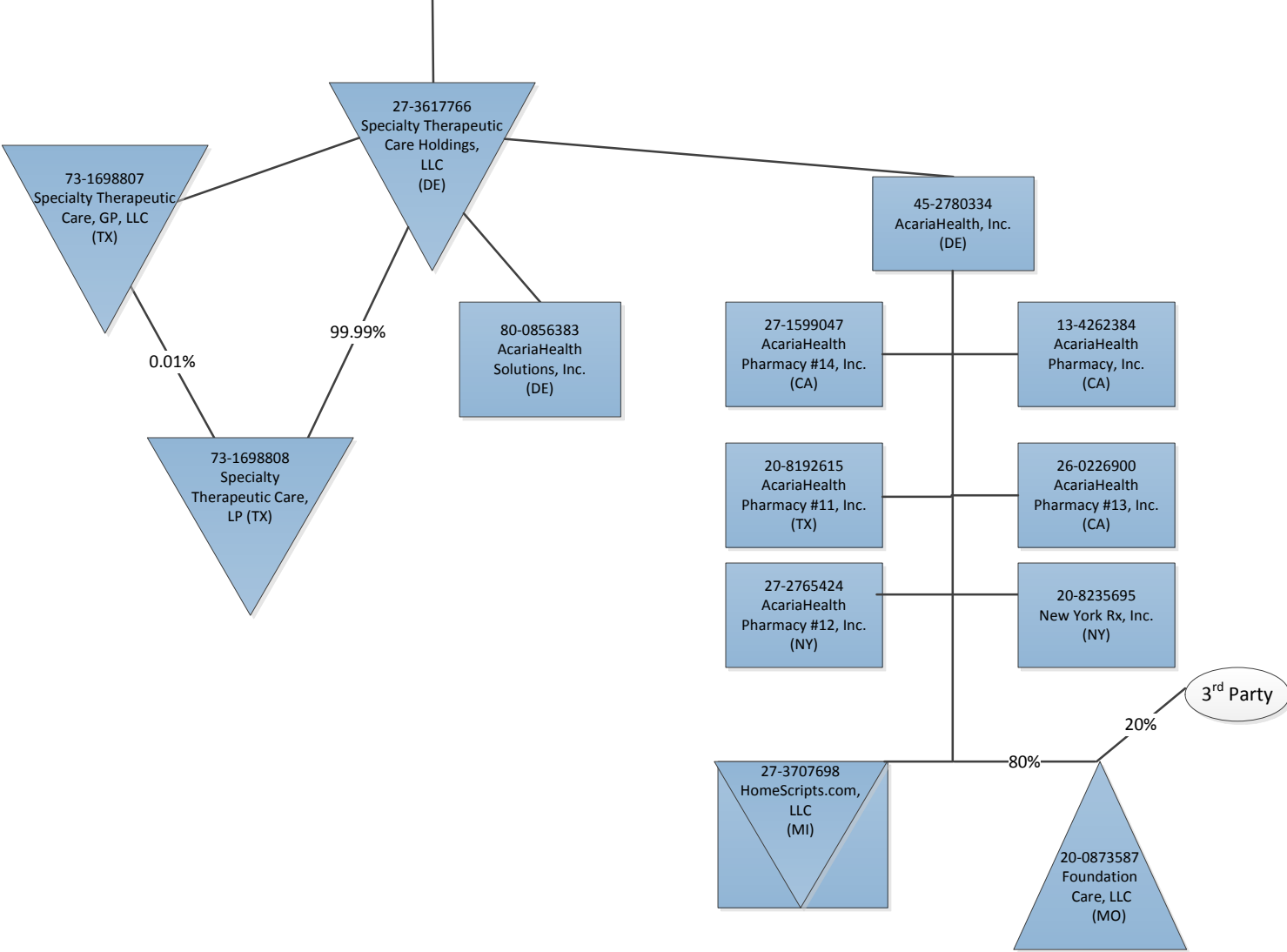
(1) The Centene Foundation for Quality Health Care (MO) – (FEIN #20-1516497)
 (2) The Centene Charitable Foundation (MO) – (FEIN #20-1298192)
 (3) Cenpatico Foundation (TX) (FEIN #27-1252360)

42-1406317
Centene Corporation (DE)



Footnotes
 1 – Patriots Holding Co. owns the remaining 35.5% of nirvanaHealth, LLC.

42-1406317
 Centene Corporation (DE)



Centene Corporation & Subsidiaries
Organizational Chart
Last Updated: April 17, 2019
Page 5 – U.S. Medical Management – Specialty Segment

42-1406317
Centene Corporation (DE)

Visiting Podiatry, PLLC
27-5023759 (MI)

VPA, P.C., dba Visiting Physicians Association (MI)
38-3176990

VPA of Texas, PLLC dba Visiting Physicians Association (MI)
20-2386997

A
See detail to right

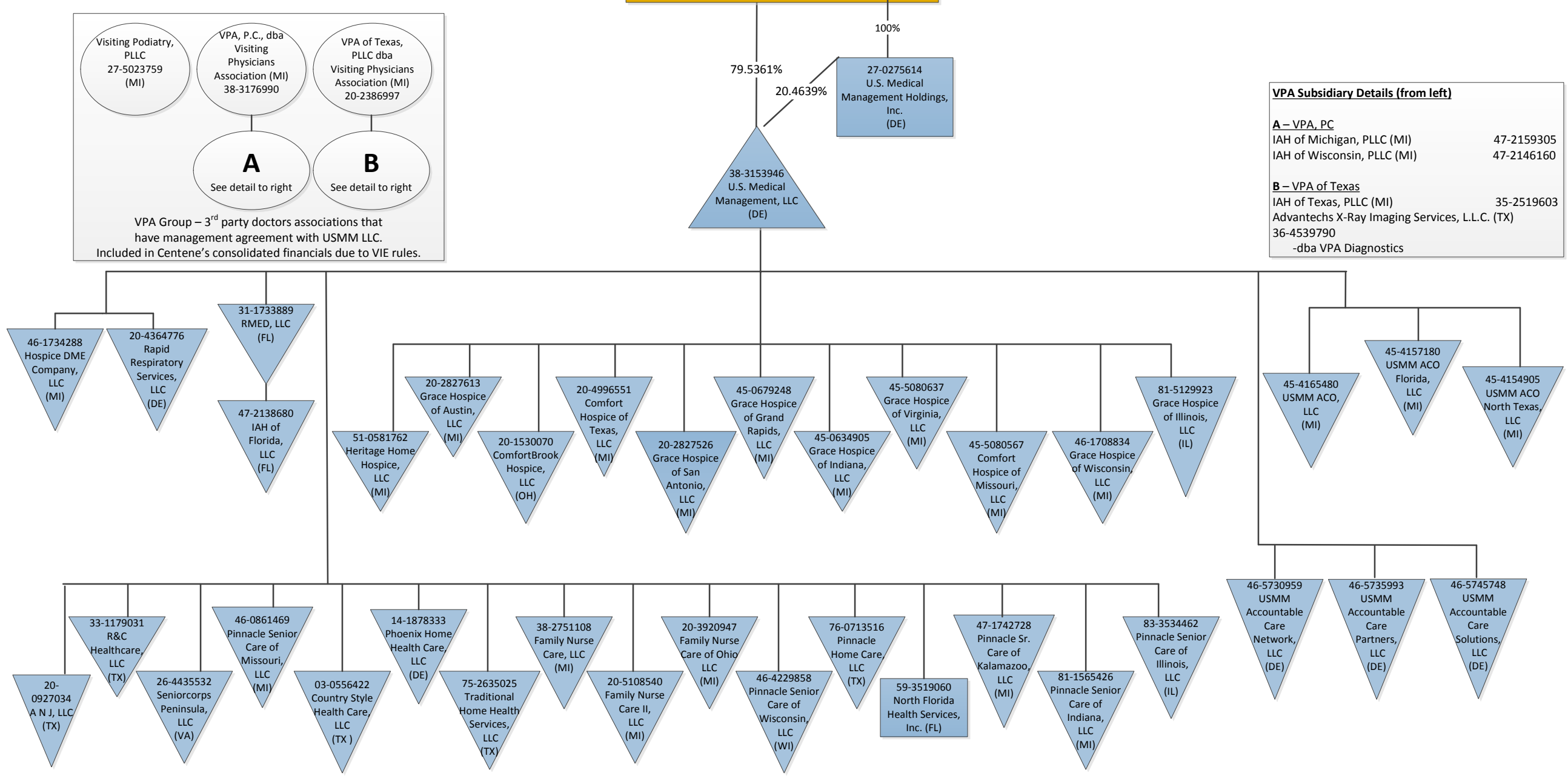
B
See detail to right

VPA Group – 3rd party doctors associations that have management agreement with USMM LLC. Included in Centene’s consolidated financials due to VIE rules.

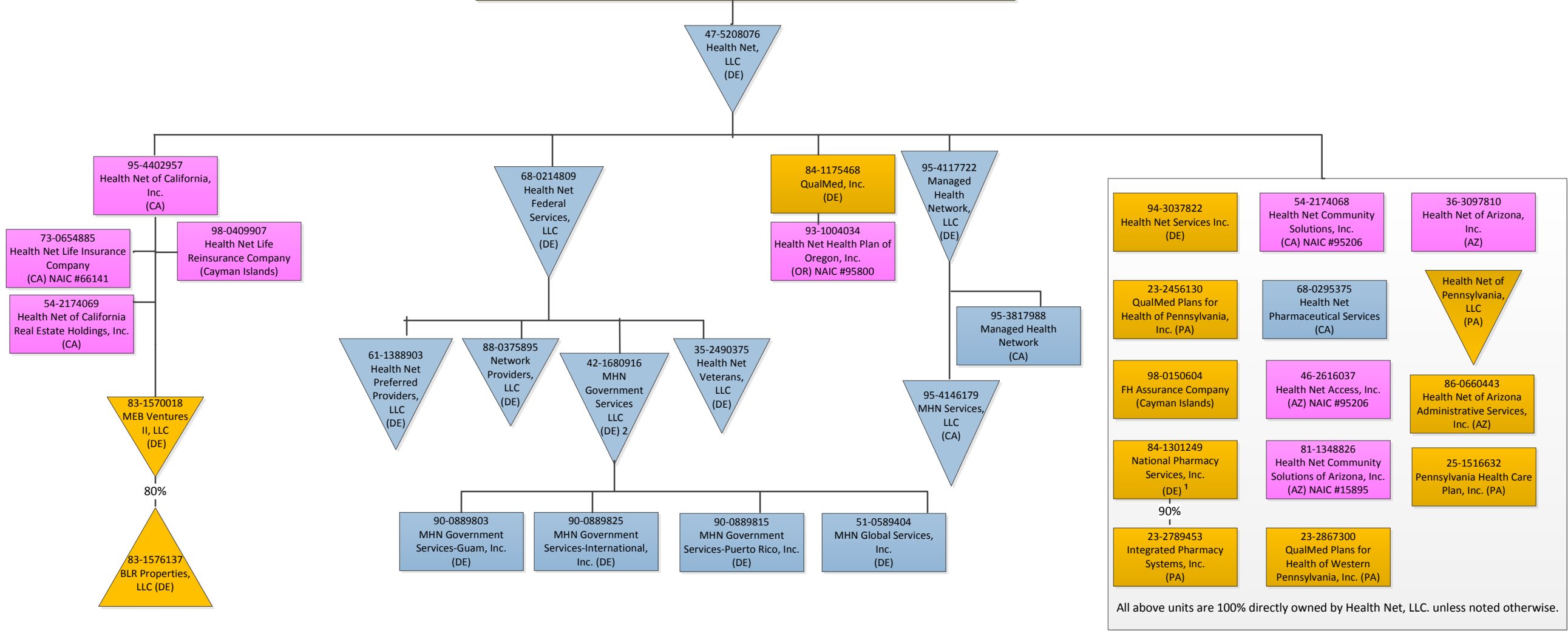
VPA Subsidiary Details (from left)

A – VPA, PC
 IAH of Michigan, PLLC (MI) 47-2159305
 IAH of Wisconsin, PLLC (MI) 47-2146160

B – VPA of Texas
 IAH of Texas, PLLC (MI) 35-2519603
 Advantechs X-Ray Imaging Services, L.L.C. (TX) 36-4539790
 -dba VPA Diagnostics



42-1406317
Centene Corporation (DE)



Footnotes

1- National Pharmacy Services, Inc. owns approximately 90% of the outstanding common stock of Integrated Pharmacy Systems, Inc.
 2 – MHN Government Services LLC owns 10% of the equity interests in Network Providers, LLC.

42-1406317
 Centene Corporation (DE)

82-5316510
 MHM Services, Inc. (DE)

90-0766502
 Centurion, LLC (DE)

26-1877007
 Forensic Health Services, LLC (DE)

51-0620904
 MHM Services of California, LLC (CA)

60-0002002
 MHM Solutions, LLC (DE)

46-1734817
 MHM Health Professionals, LLC (DE)

54-4856340
 MHM Correctional Services, LLC (DE)

82-4823469
 Centurion of New Hampshire, LLC (DE)

81-4938030
 Centurion of Maryland, LLC (MD)

81-4228054
 Centurion of Arizona, LLC (AZ)

82-2268901
 Centurion of Alabama, LLC (AL)

81-1161492
 Centurion Correctional Healthcare of New Mexico, LLC (NM)

47-2967381
 Centurion of Mississippi, LLC (MS)

30-0752651
 Centurion of Tennessee, LLC (TN)

47-1229365
 Centurion of Pennsylvania, LLC (PA)

82-3128848
 Centurion of Georgia, LLC (GA)

81-5429405
 Centurion of Philadelphia, LLC (PA)

81-0687470
 Centurion of Florida LLC (FL)

46-2717814
 Centurion of Minnesota, LLC (MN)

47-1686283
 Centurion of Vermont, LLC (VT)

82-4735175
 Centurion Detention Health Services, LLC (DE)

42-1406317
Centene Corporation (DE)

20-8630006
 MHS Consulting,
 International, Inc.
 (DE)

PRIMEROSALUD, S.L.
 (Spain)

Centene Europe
 Financing Company
 Limited
 (Malta)

27-2075447
 MHS European
 Holdings s.a.r.l.
 (Luxembourg)

MH Services
 International Holdings
 (UK) Limited

50%
 Ribera Salud, S.A.
 (Spain)

89.47%
 Torrejon Salud, S.A.
 (Spain)

MH Services
 International (UK)
 Limited)

50%
 Infraestructuras y
 Servicios de Alzira, S.L.

14.50%
 Erescanner Salud
 UTE (Valencia)

45.0%
 BR Salud UTE
 (Madrid)

35.0%
 Marina Salud, S.A.
 (Denia)

96.0%
 Ribera Salud II
 UTE (Alzira)

65%
 Torrevieja Salud UTE
 (Torrevieja)

35%
 Torrevieja Salud
 S.L.U (Torrevieja)

50%
 Ribera-Quilpro
 UTE (Spain)

Ribera Salud
 Tecnologias S.L.U
 (Valencia)

Centene UK
 Ltd.
 (UK)

The Practice (Group)
 Limited
 (UK)

B2B Salud S.L.U.
 (Alicante)

Elche-Crevilente Salud,
 S.A.. (Elche)

Ribera Salud Proyectos
 S.L.U.
 (Valencia)

Ribera Salud
 Infraestructuras S.L.U.
 (Valencia)

5%
 Villa Maria del
 Triunfo Salud S.A.C.
 (Peru)

5%
 Callao Salud S.A.C.
 (Peru)

B2B Gestión integral,
 S.L.

B2B LAB, S.L

66.43%
 Pro Diagnostic Group,
 a.s. (Slovakia)

DR Magnet
 (Slovakia)

Medicina NZ
 (Slovakia)

MR Propad
 (Slovakia)

MR Zilina
 (Slovakia)

Pro Magnet
 (Slovakia)

80%
 Pro RTG
 (Slovakia)

80%
 Pro Magnet CZ
 (Czech Republic)

CT Propad
 (Slovakia)

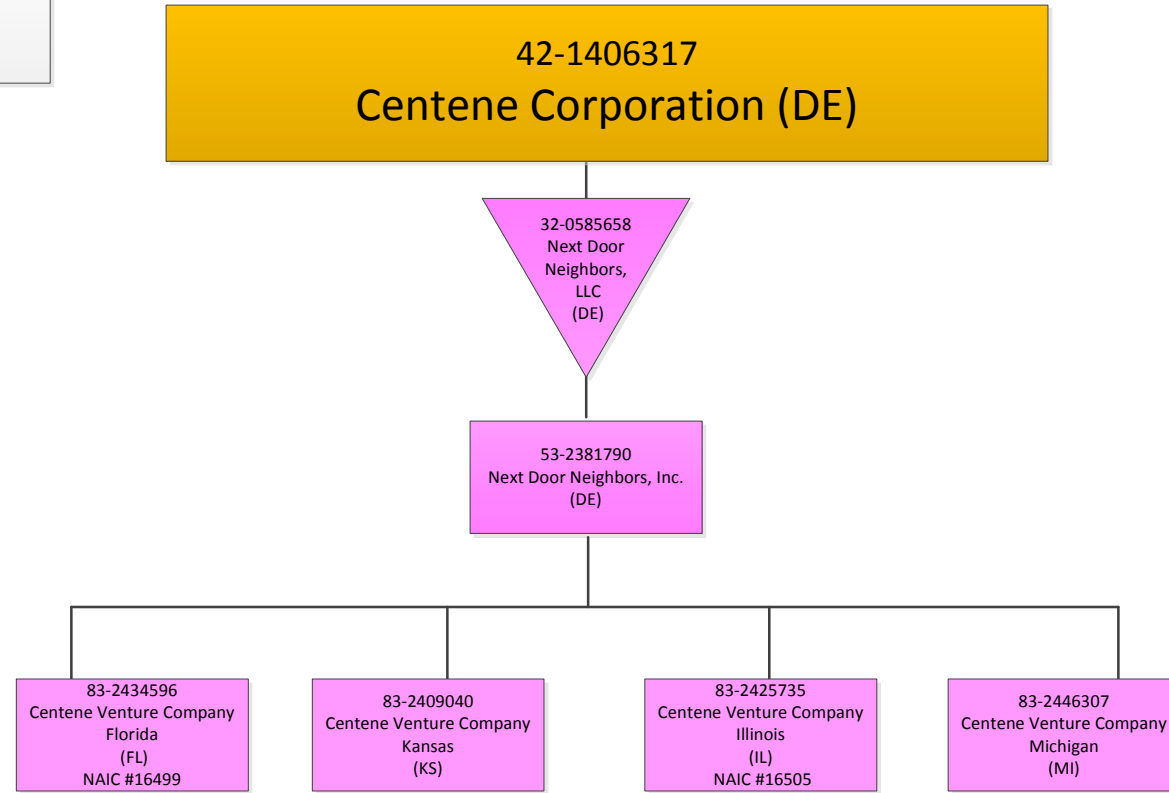
3rd Party Doctors' Association

The Practice Surgeries Limited Chilvers & McCrea Limited The Practice U Surgeries Limited The Practice Corporate Management Limited

A
 See detail to right

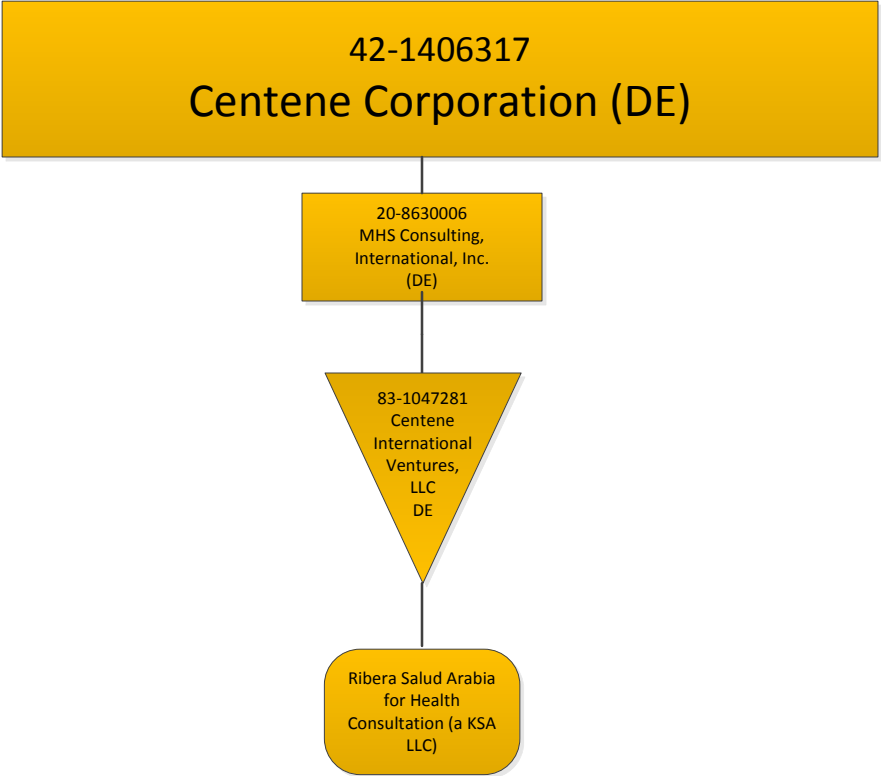
A – The Practice Surgeries Limited
 Phoenix Primary Care Limited
 -Phoenix Primary (South) Limited

3rd party doctors associations that have management agreement with with UK affiliates



Legend

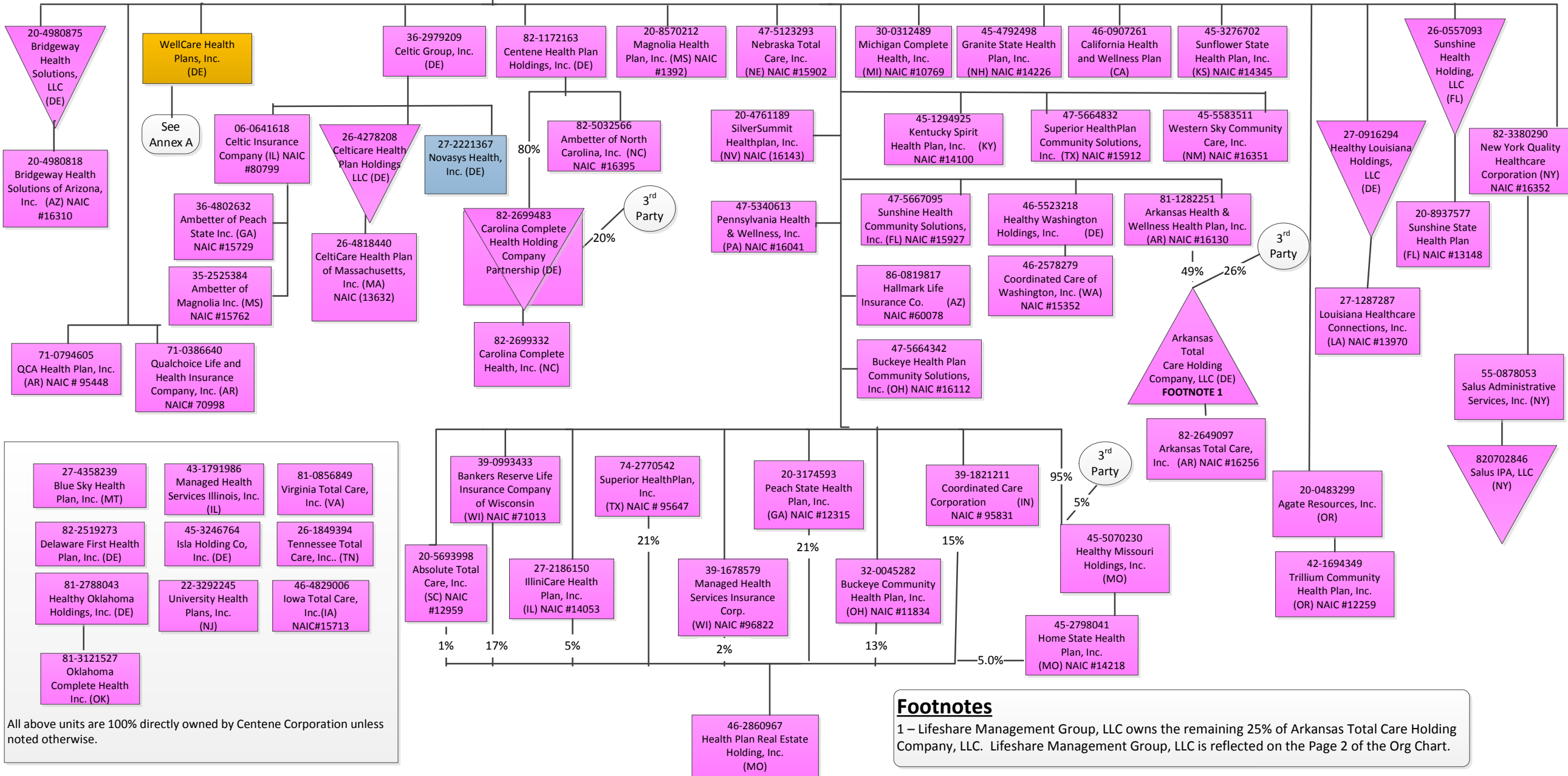
	Disregarded entity		Corporate
	LLC or partnership taxed as corporation		Health Plan Segment
	Partnership		Specialty Segment
	C-Corporation		
	Controlled Foreign Corporation		
	Disregarded Controlled Foreign Corporation		
	Third Party		



**Centene Corporation & Subsidiaries
Organizational Chart**
Last Updated: April 17, 2019
Page 1 – Managed Care Segment

**42-1406317
Centene Corporation (DE)**

- Management Companies (p2)
- AcariaHealth (p4)
- Health Net (p6)
- International (p8)
- KSA (p10)
- Specialty Segment (p3)
- USMM (p5)
- Centurion (p7)
- Next Door Neighbors (p9)



All above units are 100% directly owned by Centene Corporation unless noted otherwise.

Footnotes
1 – Lifeshare Management Group, LLC owns the remaining 25% of Arkansas Total Care Holding Company, LLC. Lifeshare Management Group, LLC is reflected on the Page 2 of the Org Chart.