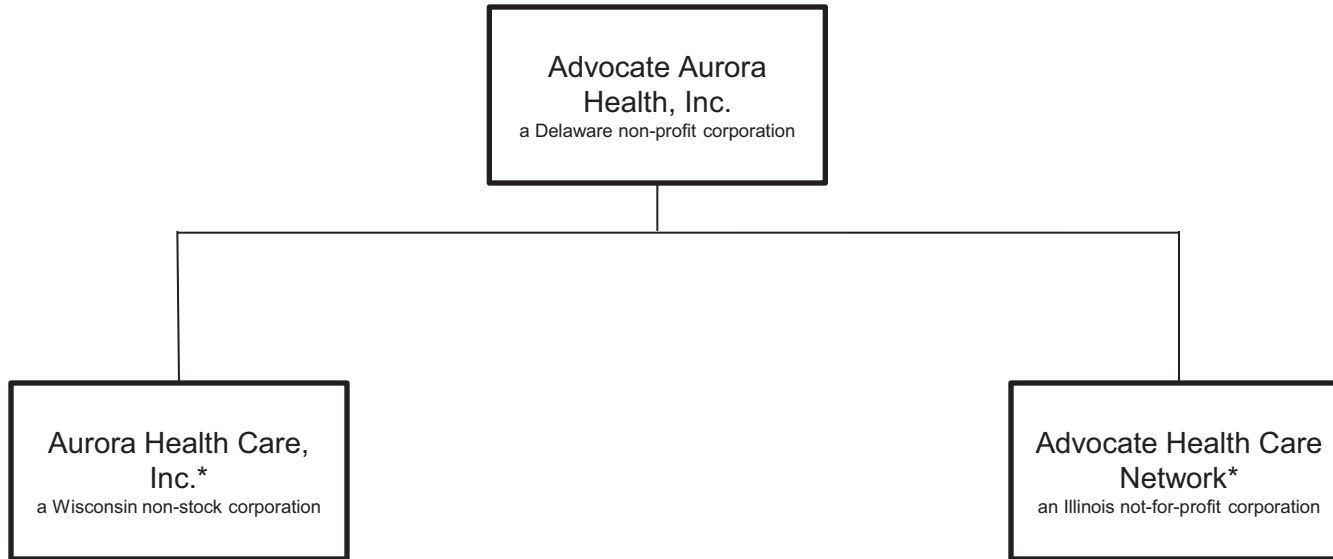


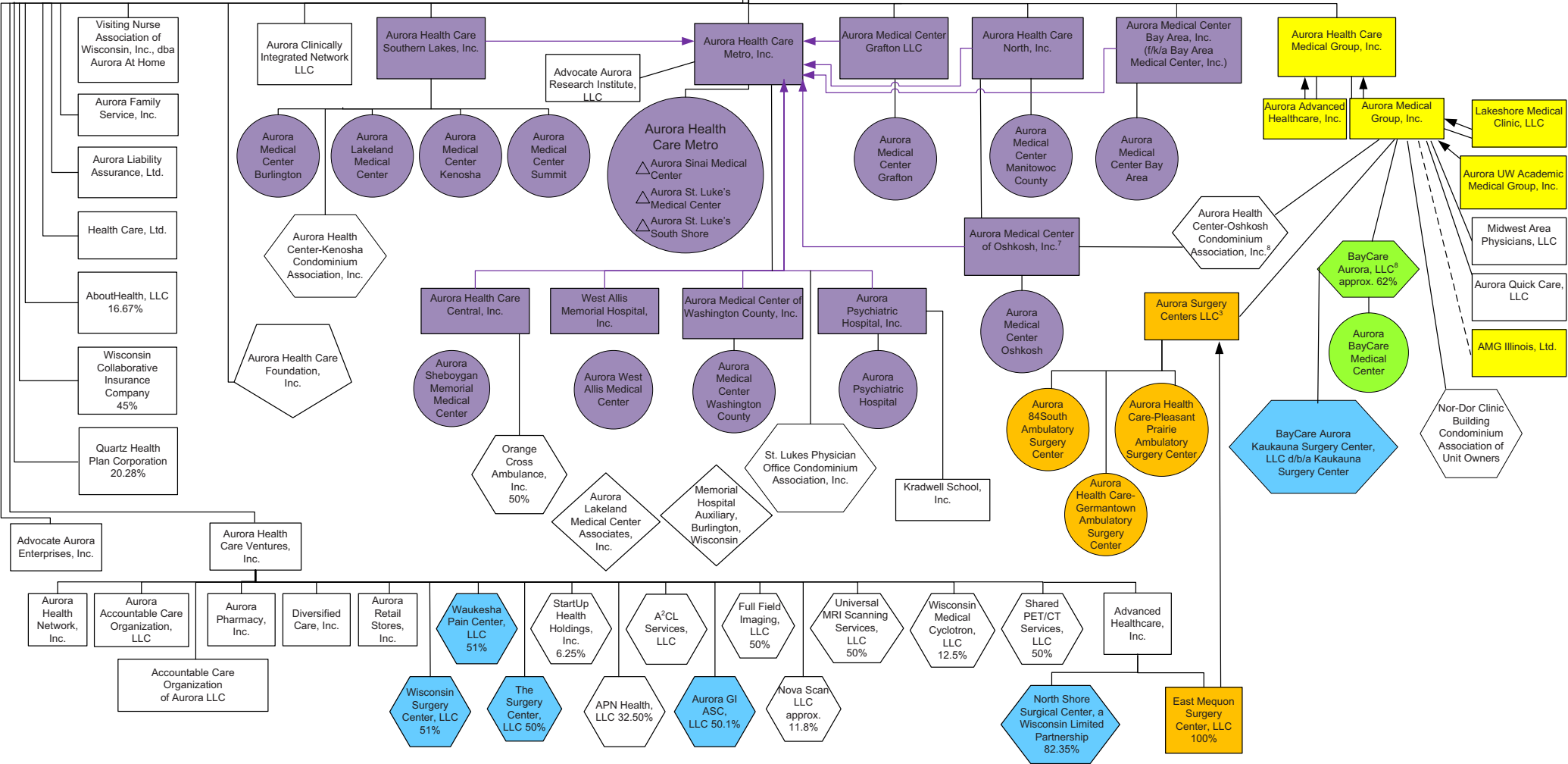
# Advocate Aurora Health, Inc.



\* Please see page 2 for an organizational chart of Aurora Health Care, Inc. and its subsidiaries and pages 3 and 4 for an organizational chart of Advocate Health Care Network and its subsidiaries.

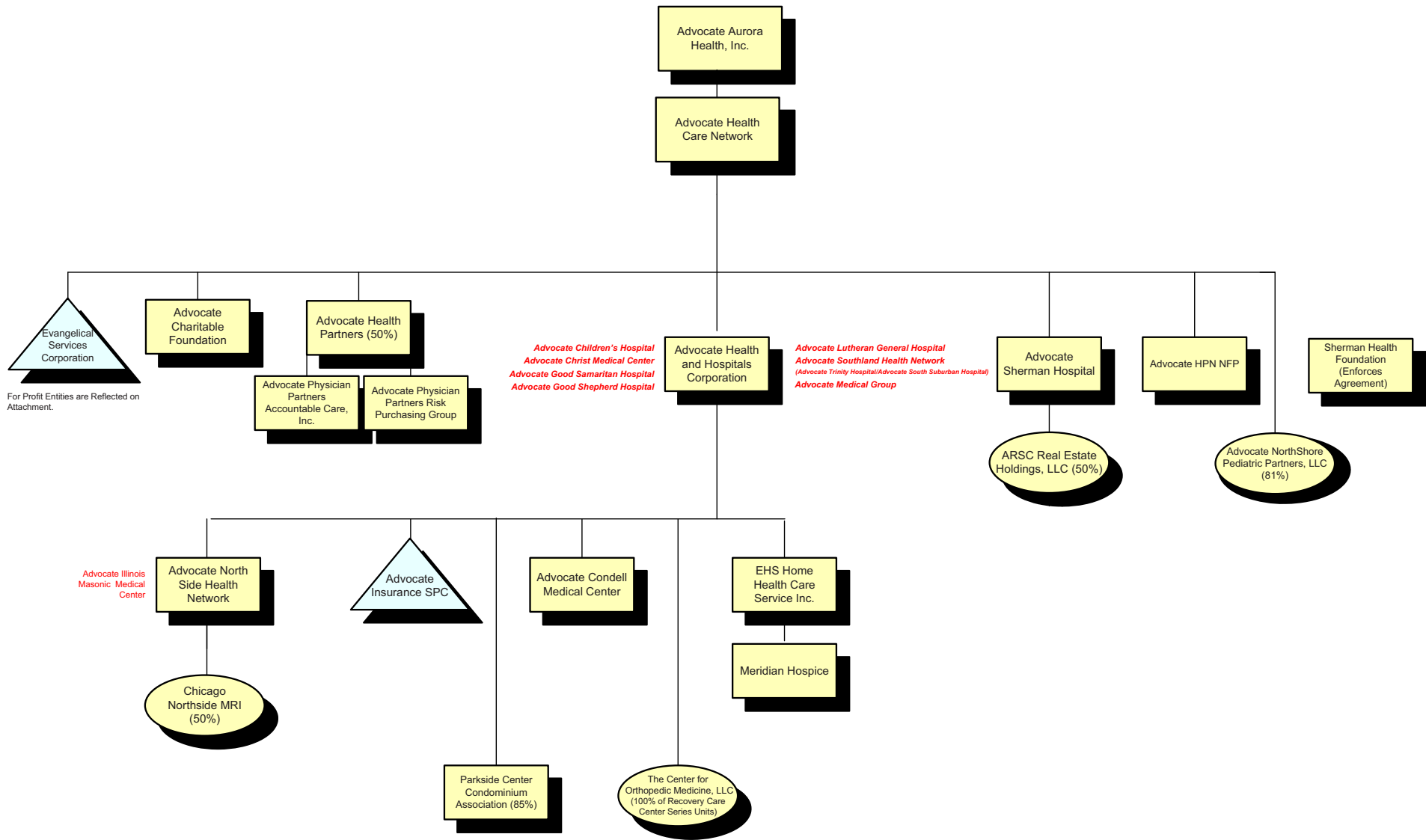
# ADVOCATE AURORA HEALTH, INC.

Aurora Health Care, Inc.



- = Legal Entity
- = Hospital Operation (not a separate legal entity)
- ◡ = Foundation
- ◊ = Delegated Board Authority
- △ = Hospital Practice Locations of Single Provider
- ◡ = Partially Owned by an Aurora Entity or One or More Aurora Entities are Members
- ◊ = Auxiliary

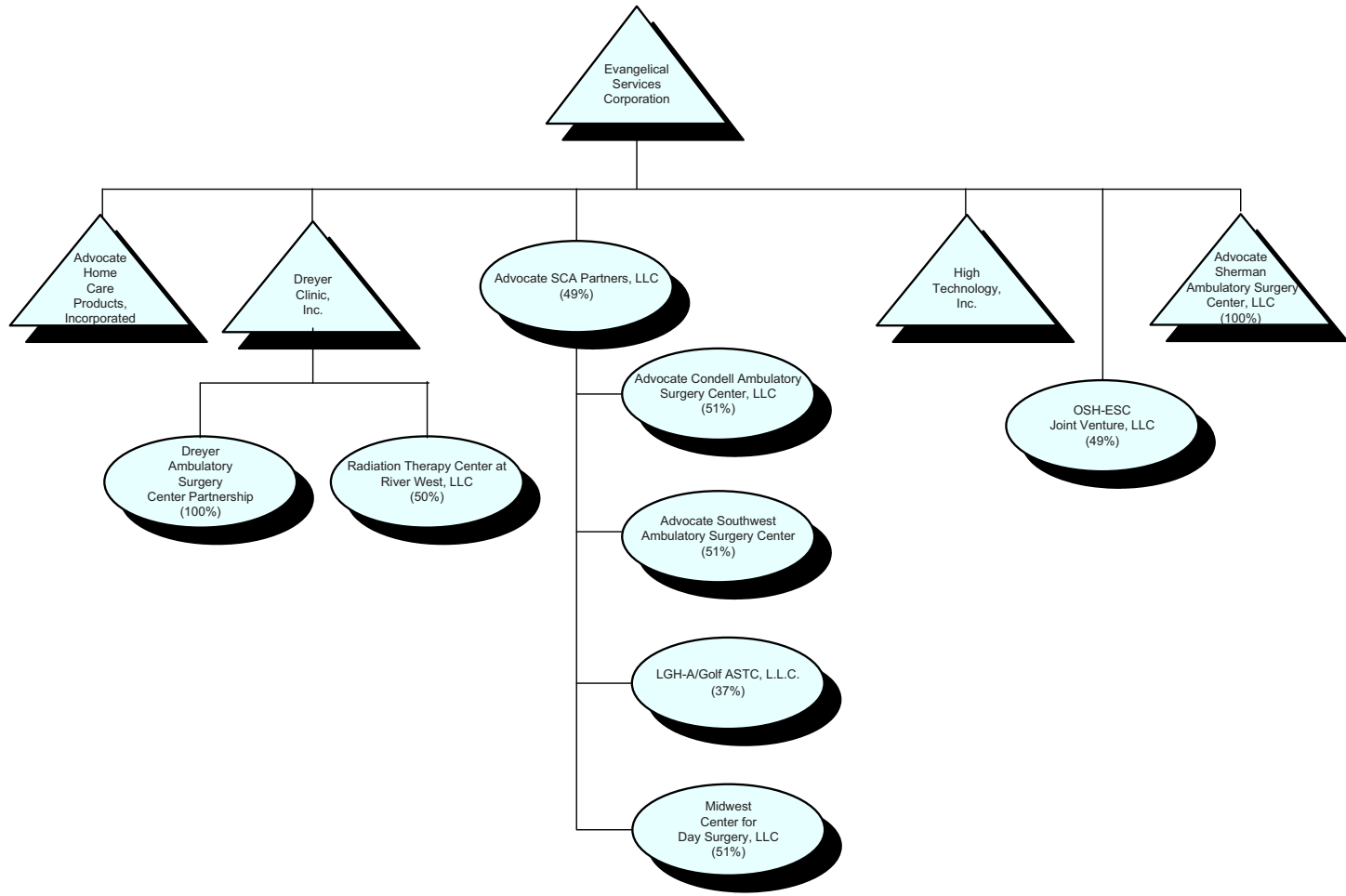
= Purple Fill = Aurora Hospital System
  = Green Fill = Joint Venture Hospitals
  = Yellow Fill = Medical Groups
  = Light Blue Fill = Joint Venture ASC
  = Orange Fill = Aurora Ambulatory Surgery Center





For Profit Entities are Reflected on Attachment.

Advocate Illinois Masonic Medical Center

- = Not for Profit
- = For Profit
- = Pass Through Entities
- Red = Operating Divisions
- 100% Ownership Unless Otherwise Noted.



 = For Profit Corporation  
 = Pass Through Entities  
 100% Ownership Unless Otherwise Noted