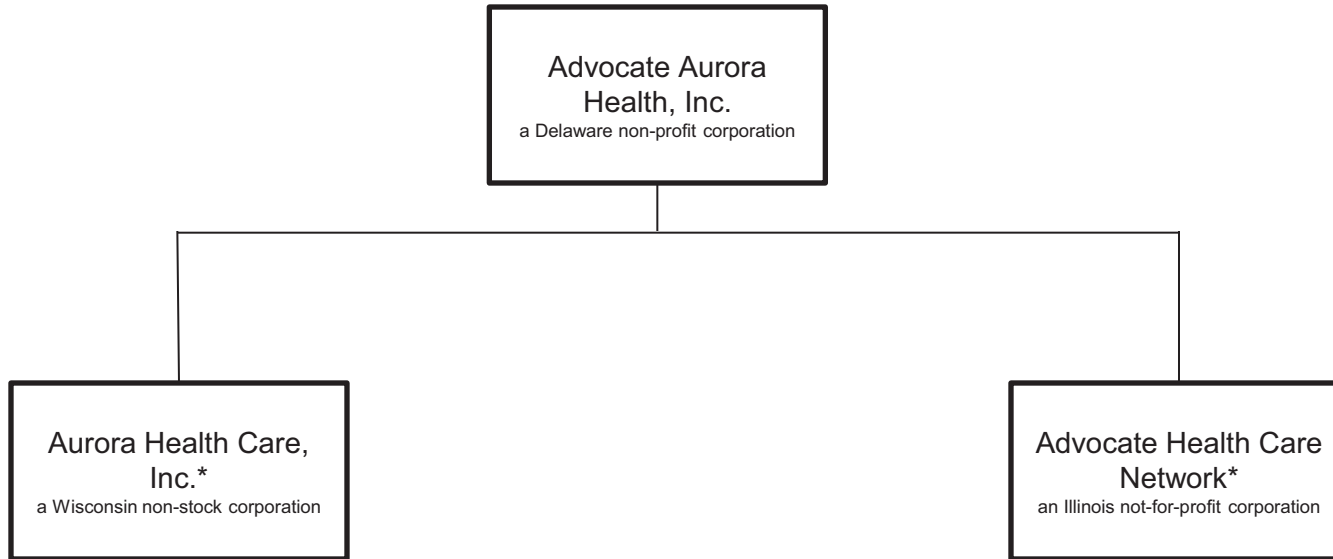


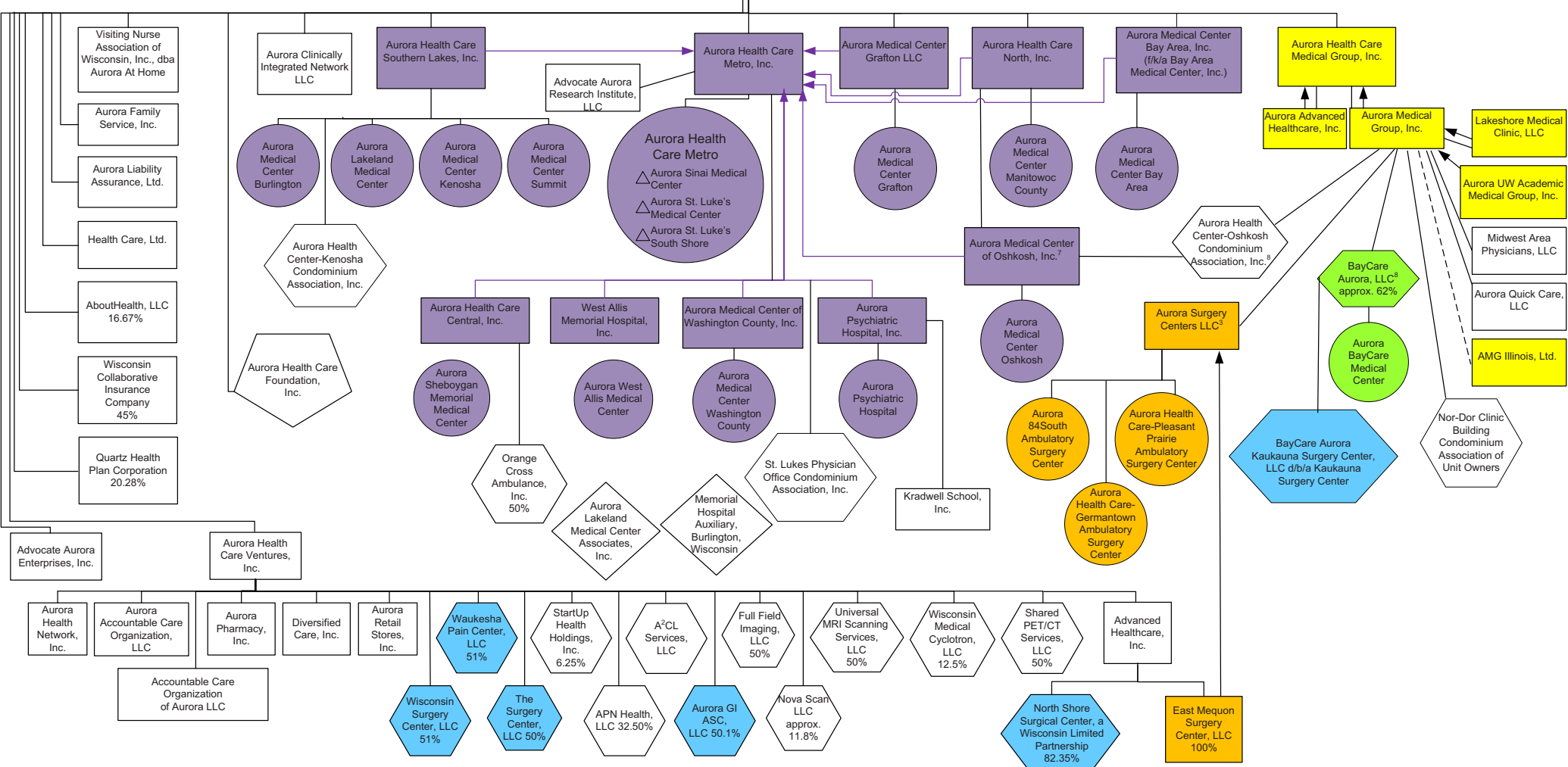
Advocate Aurora Health, Inc.



* Please see page 2 for an organizational chart of Aurora Health Care, Inc. and its subsidiaries and pages 3 and 4 for an organizational chart of Advocate Health Care Network and its subsidiaries.

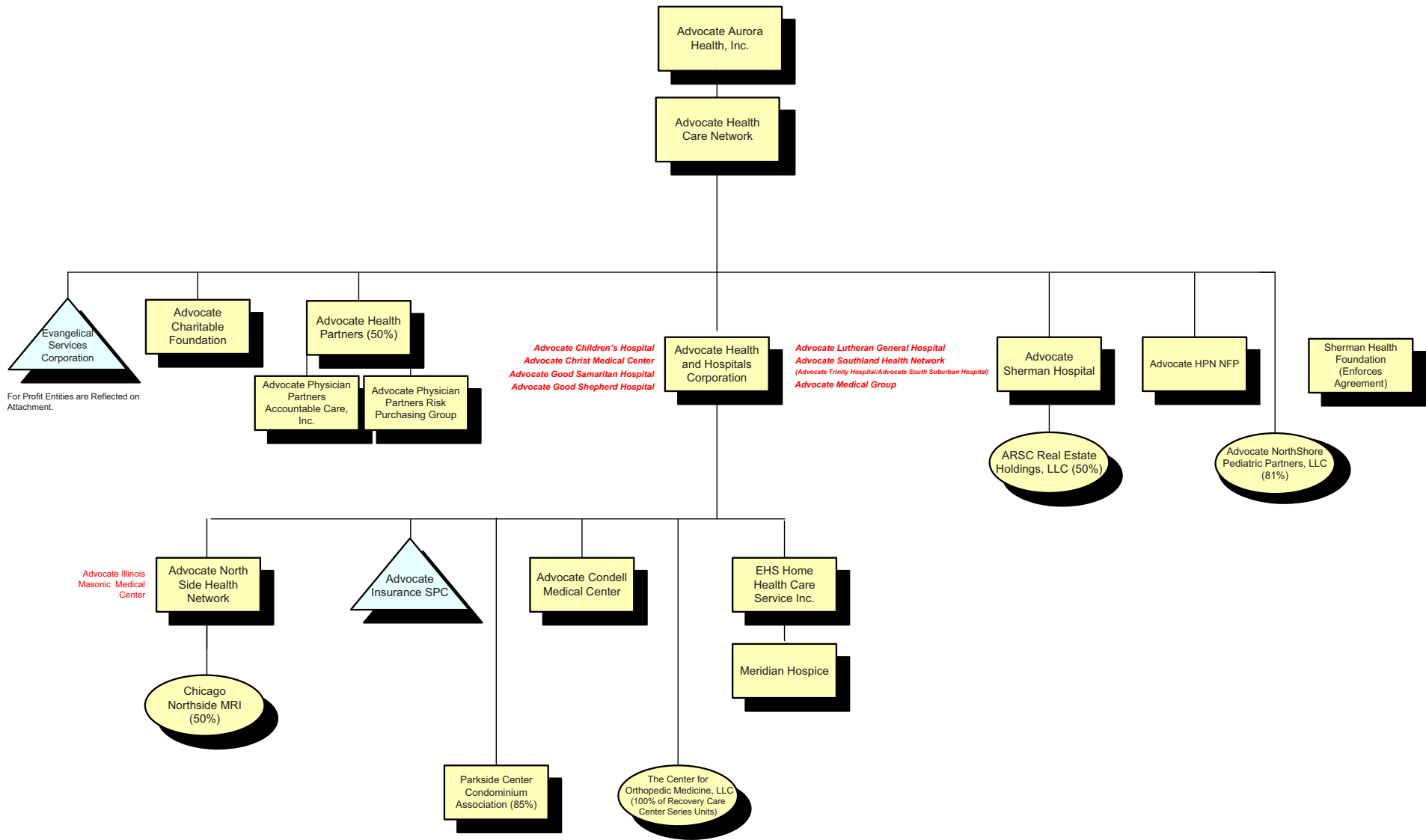
ADVOCATE AURORA HEALTH, INC.

Aurora Health Care, Inc.



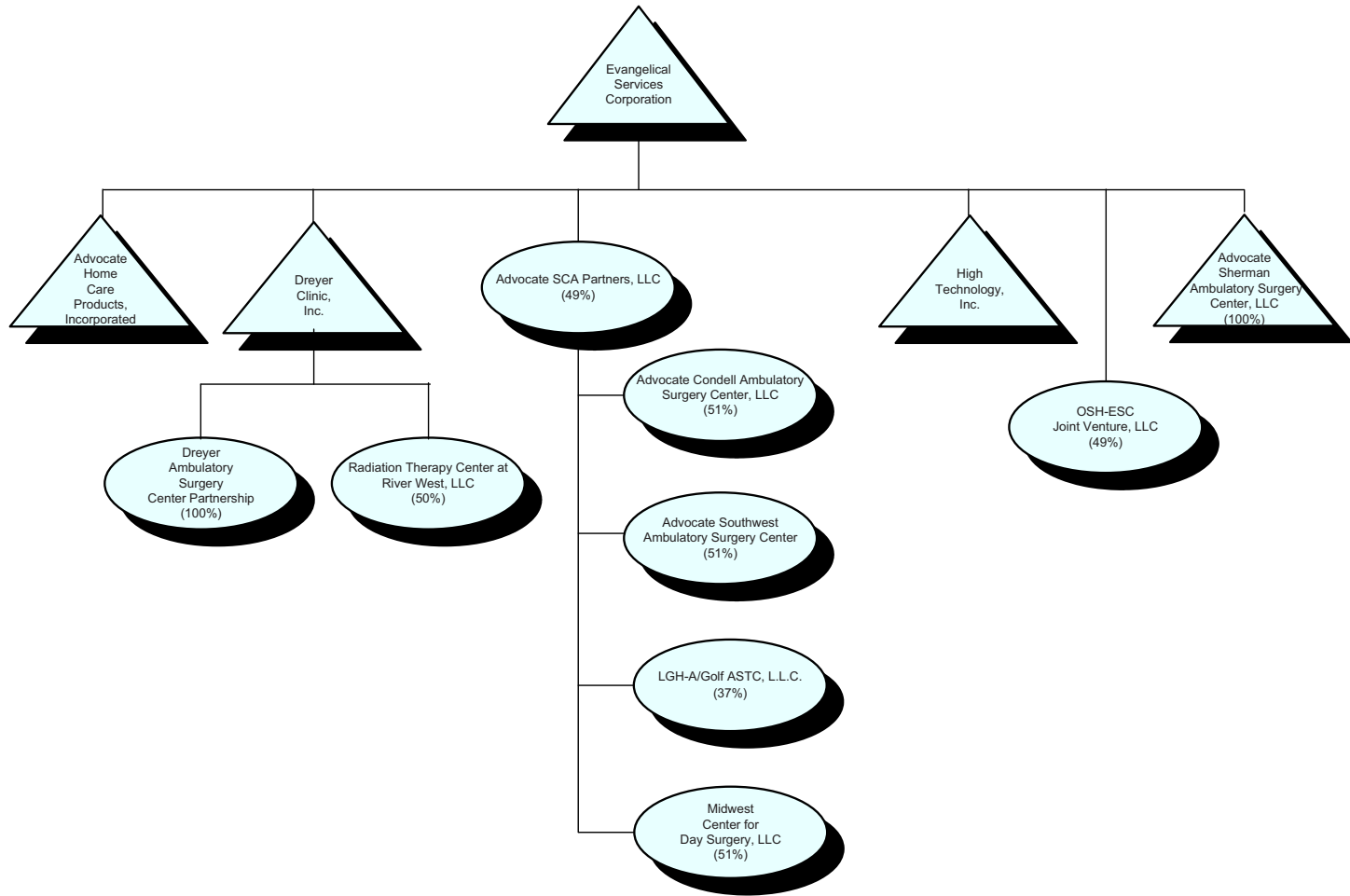
- = Legal Entity
- = Hospital Operation (not a separate legal entity)
- ◡ = Foundation
- ◓ = Delegated Board Authority
- △ = Hospital Practice Locations of Single Provider
- ◔ = Partially Owned by an Aurora Entity or One or More Aurora Entities are Members
- ◇ = Auxiliary

- (Purple Fill) = Aurora Hospital System
- (Green Fill) = Joint Venture Hospitals
- (Yellow Fill) = Medical Groups
- (Light Blue Fill) = Joint Venture ASC
- (Orange Fill) = Aurora Ambulatory Surgery Center



For Profit Entities are Reflected on Attachment.

- = Not for Profit
- = For Profit
- = Pass Through Entities
- Red = Operating Divisions
- 100% Ownership Unless Otherwise Noted.



△ = For Profit Corporation
 ○ = Pass Through Entities

100% Ownership Unless Otherwise Noted