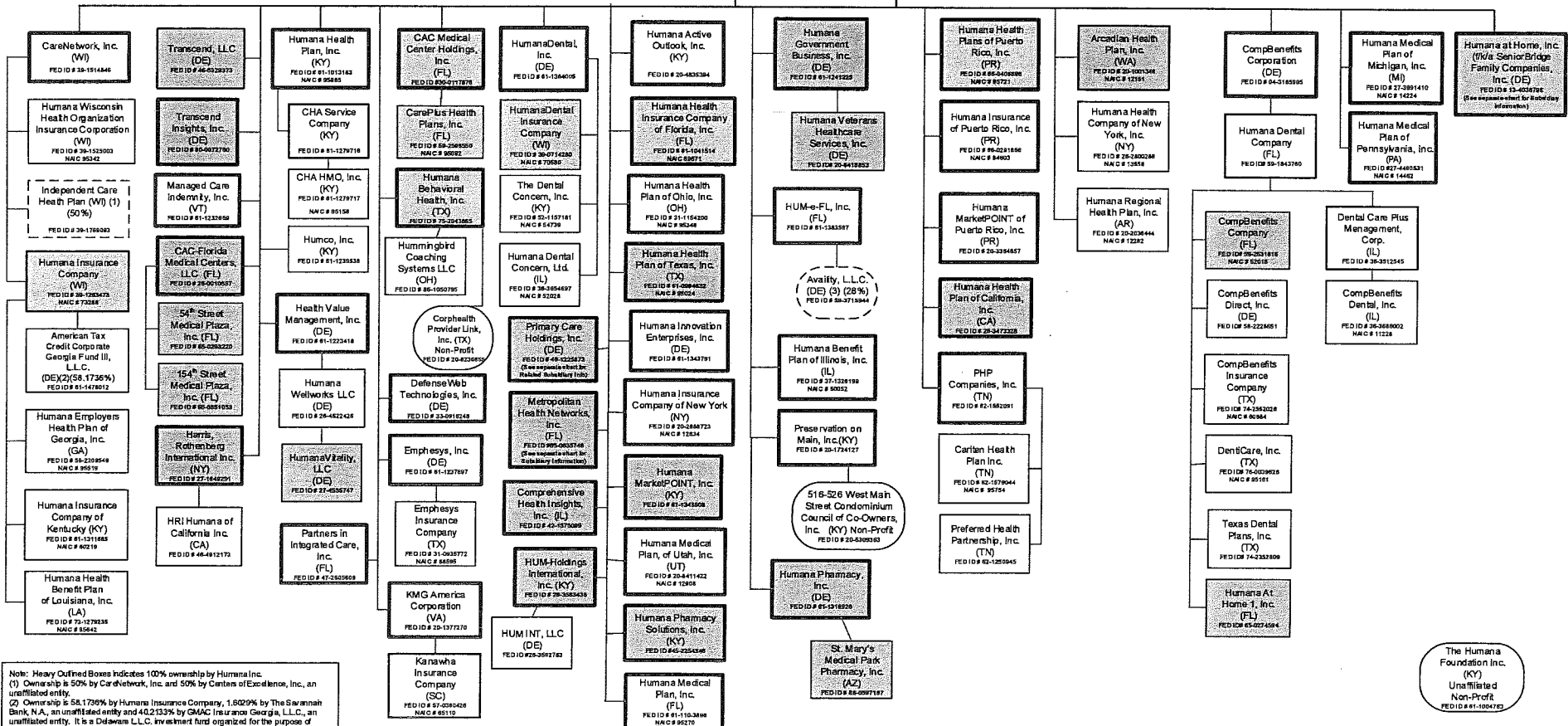


Exhibit 2 Current organizational chart of Humana and its affiliates.

Humana Inc.
(DE)
FED ID # 01-0647538

Blue boxes indicate companies with employees



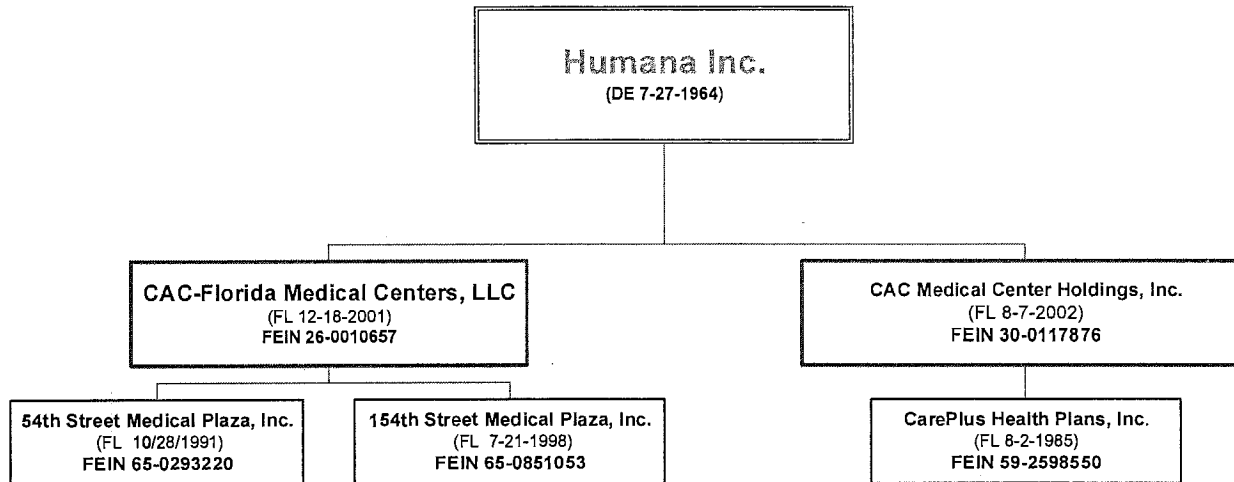
Note: Heavy Outlined Boxes indicates 100% ownership by Humana Inc.
 (1) Ownership is 50% by CareNetwork, Inc. and 50% by Centex of Excellence, Inc., an unaffiliated entity.
 (2) Ownership is 58.1736% by Humana Insurance Company, 1.5209% by The Savannah Bank, N.A., an unaffiliated entity and 40.2133% by GMAC Insurance Georgia, L.L.C., an unaffiliated entity. It is a Delaware L.L.C. investment fund organized for the purpose of investing in apartment complexes generating Georgia state low income housing tax credits.
 (3) Ownership is 22.5% by HUM-e-FL, Inc., 33.75% by Navegy, Inc., an unaffiliated entity, 33.75% by Health Care Service Corporation, an unaffiliated entity and 10% by Salizore, Inc., an unaffiliated entity.

The Humana Foundation Inc. (KY) Unaffiliated Non-Profit FED ID # 01-1004763

As of 7-31-2015



Organizational Chart



As of 7/31/2015

HUMANA INC.

(Delaware)

FEIN 61-0647538

TRANSCEND, LLC

(Delaware 4/7/2014)

FEIN# 46-5329373

Contractual Relationship between the MSO
and the IPA's referenced below.
NO OWNERSHIP INTEREST

Alabama Community Physician Network, P.C.

(Alabama 12/30/2014) FEIN# 47-2750105

50% Robert Grossman, M.D.

50% Steve Lee, M.D.

Arkansas Community Physician Network, P.A.

(Arkansas 12/31/2014) FEIN# 47-2770181

50% James W. Slezak, M.D.

50% Kenneth E. Murphy, M.D.

Kansas City Community Physician Network, P.A.

(Kansas 9/8/2014) FEIN# 47-2111323

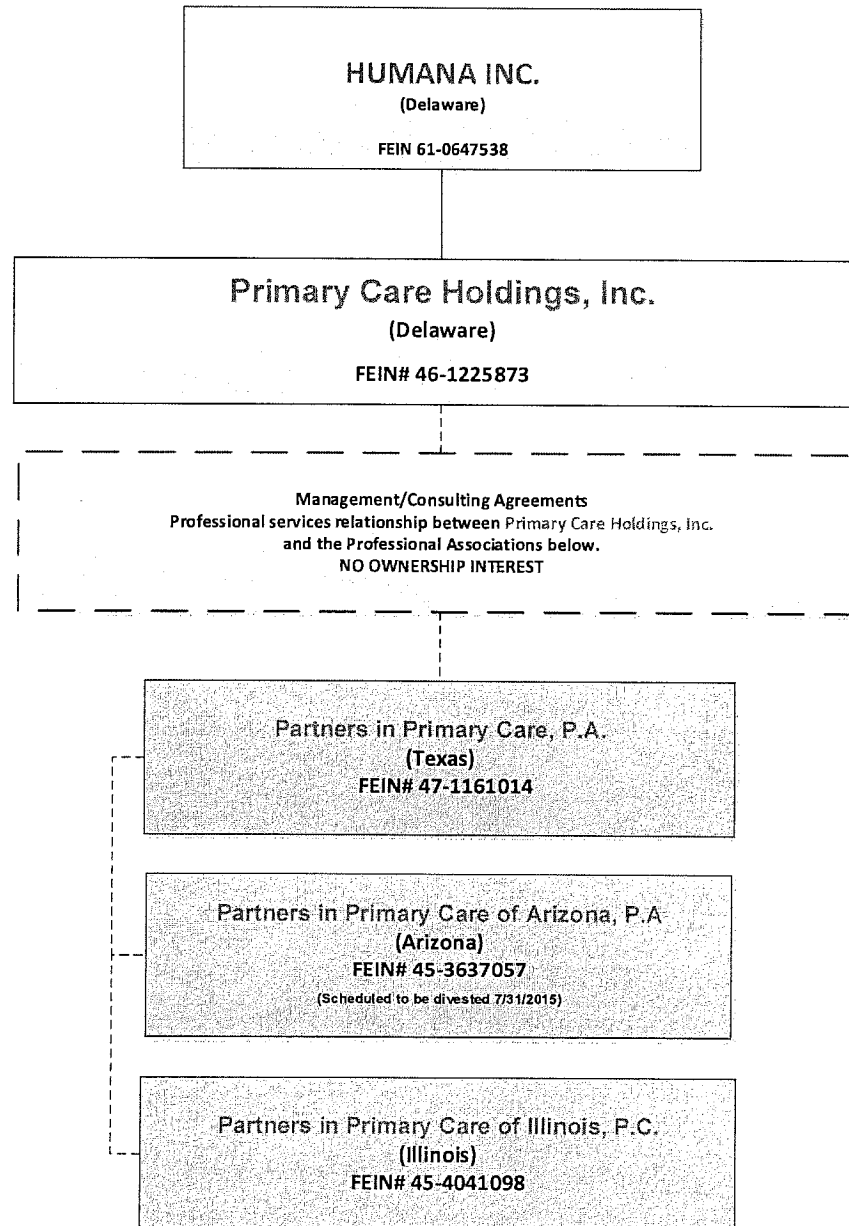
100% Elizabeth S. Peterson, M.D.

Virginia Community Physician Network, P.C.

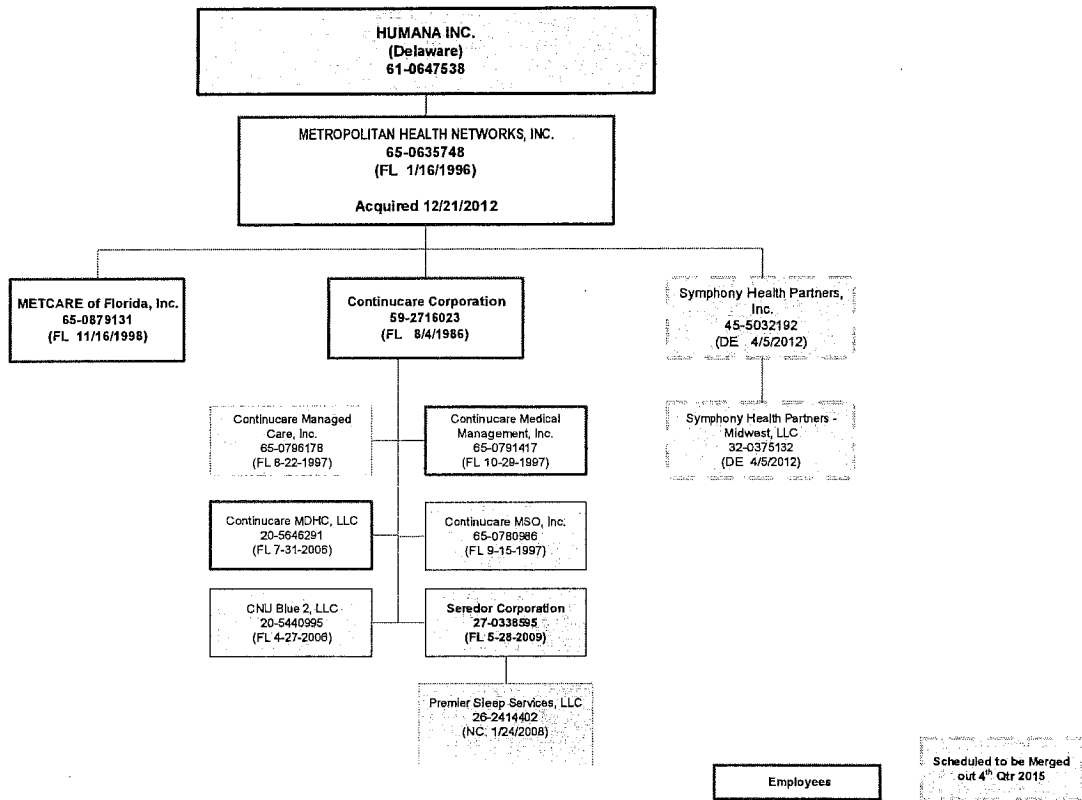
(Virginia 4/30/2015) FEIN# 47-3950146

100% Maureen E. Dempsey, M.D.

As of 7/31/2015



As of 7-31-2015



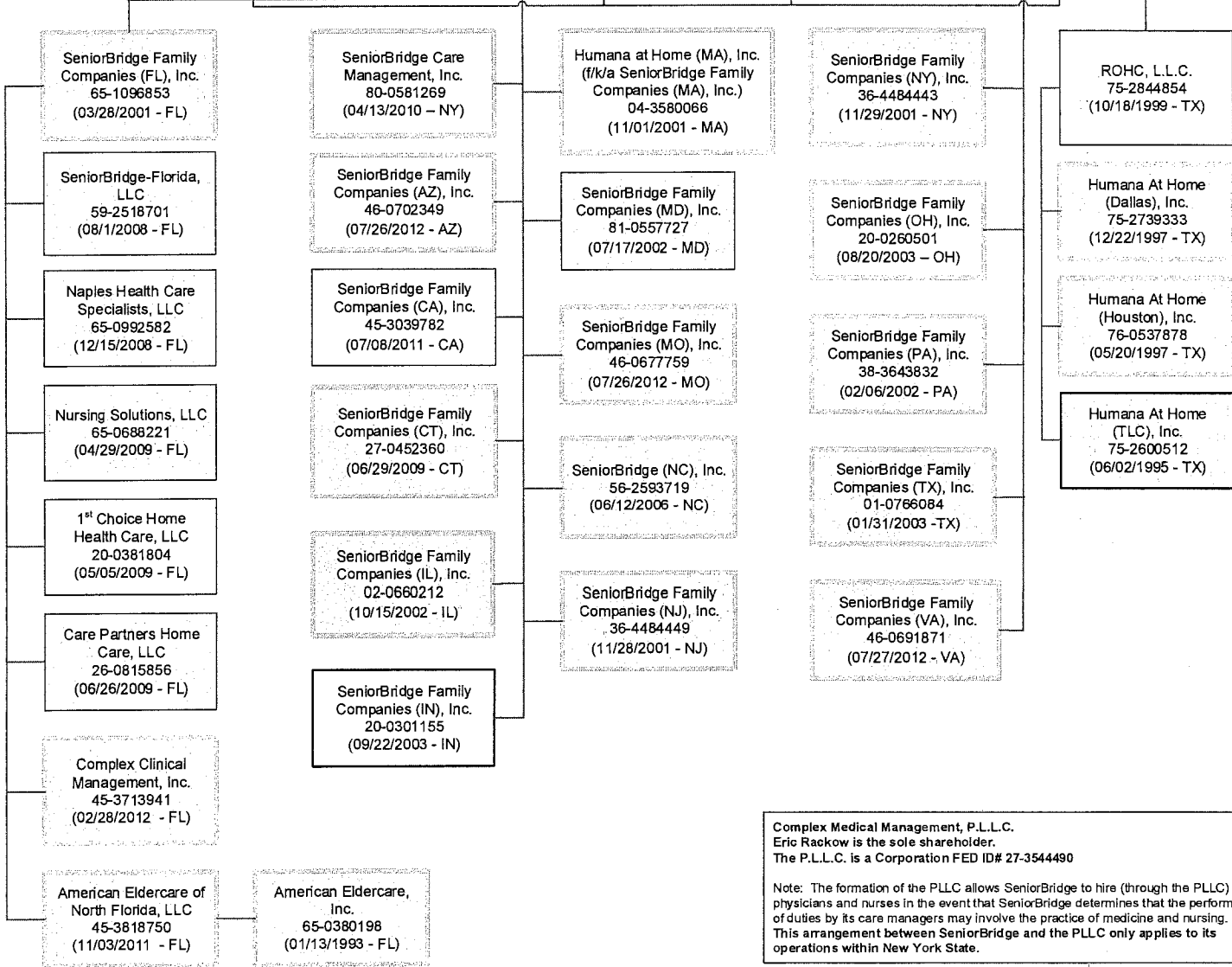
Companies with Employees

Licensed Companies

Humana Inc.
(Delaware)
61-0647538

As of 7/31/2015

Humana at Home, Inc.
(f/k/a SeniorBridge Family Companies, Inc.)
13-4036798 (01/21/2000 - DE)
Acq. 07/06/2012



Complex Medical Management, P.L.L.C.
Eric Rackow is the sole shareholder.
The P.L.L.C. is a Corporation FED ID# 27-3544490

Note: The formation of the PLLC allows SeniorBridge to hire (through the PLLC) physicians and nurses in the event that SeniorBridge determines that the performance of duties by its care managers may involve the practice of medicine and nursing. This arrangement between SeniorBridge and the PLLC only applies to its operations within New York State.