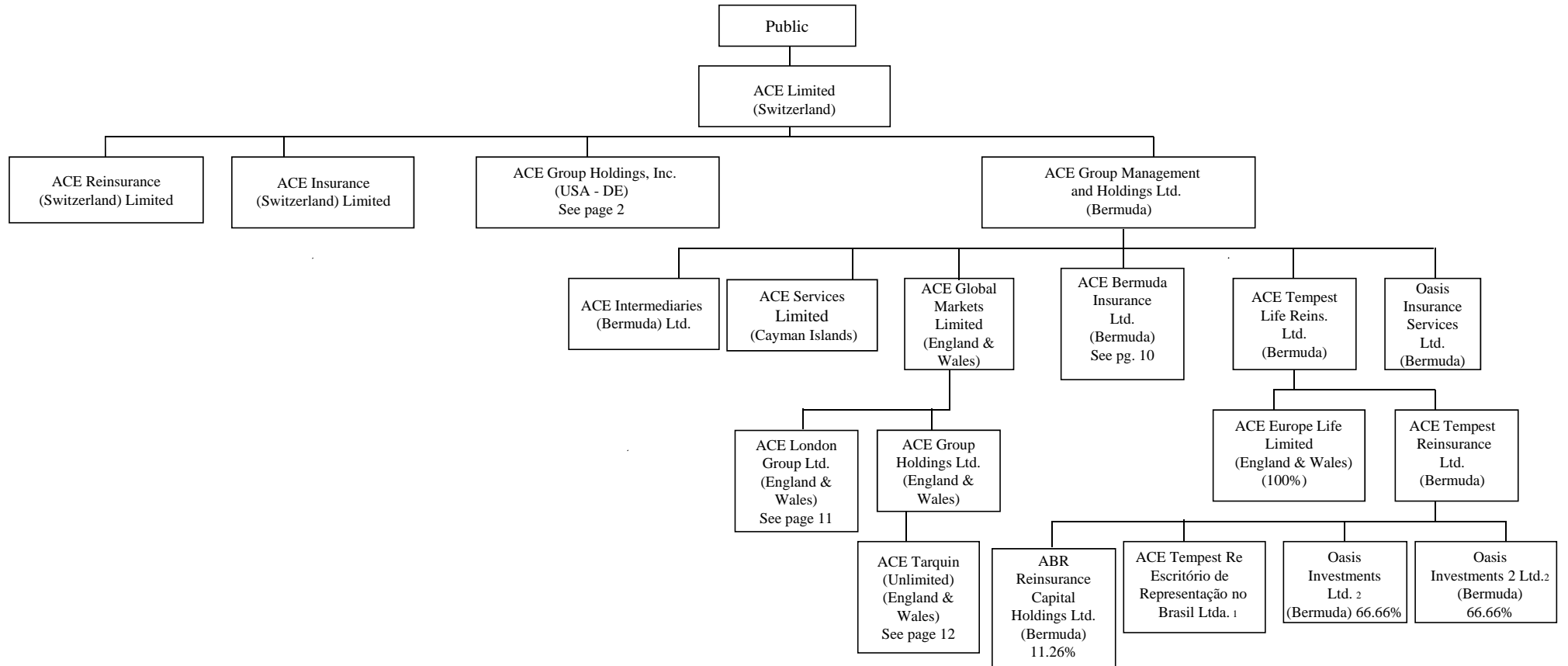


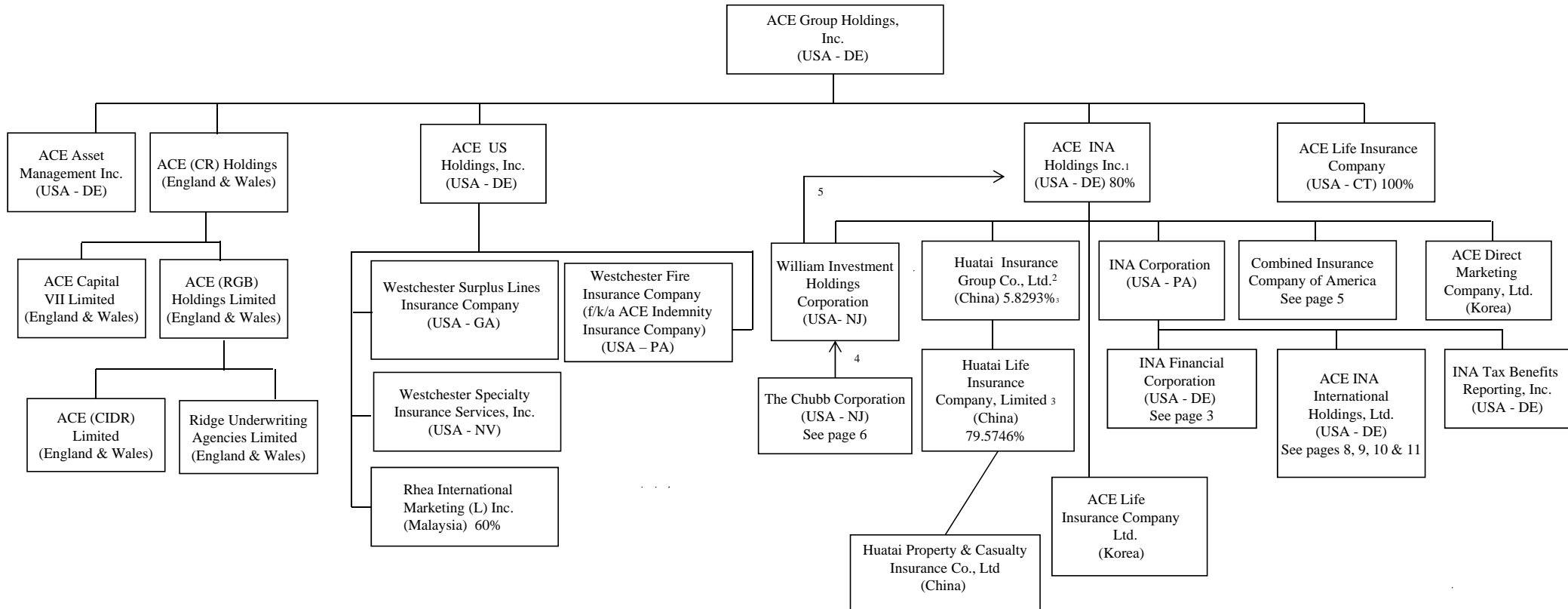
STRUCTURE OF ACE LIMITED



1. Owned 99.999999% by ACE Tempest Reinsurance Ltd. and 0.000001% by ACE Tempest Life Reinsurance Ltd.

2. Owned 33.33% by ACE Bermuda Insurance Ltd. & 66.66% by ACE Tempest Reinsurance Ltd.

STRUCTURE OF ACE LIMITED



1. The remaining 20% of ACE INA Holdings Inc. is held directly by ACE Limited

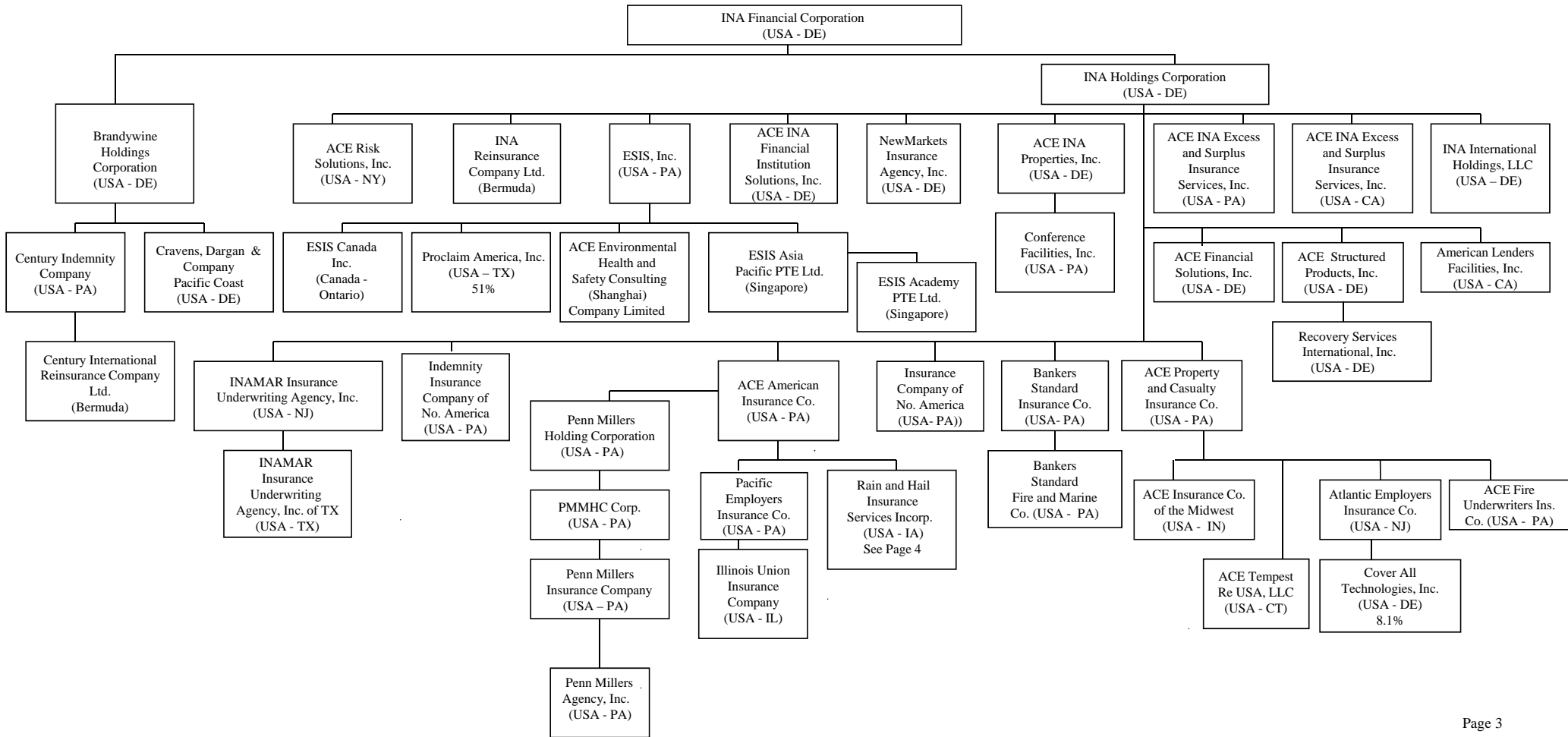
2. Owned 5.8293% by ACE INA Holdings Inc.; 9.7755% by ACE Tempest Reinsurance Ltd.; 4.3952% by ACE US Holdings, Inc.

3. Owned 20% by ACE INA Holdings Inc.; .4254% to 5 non-ACE Shareholders.

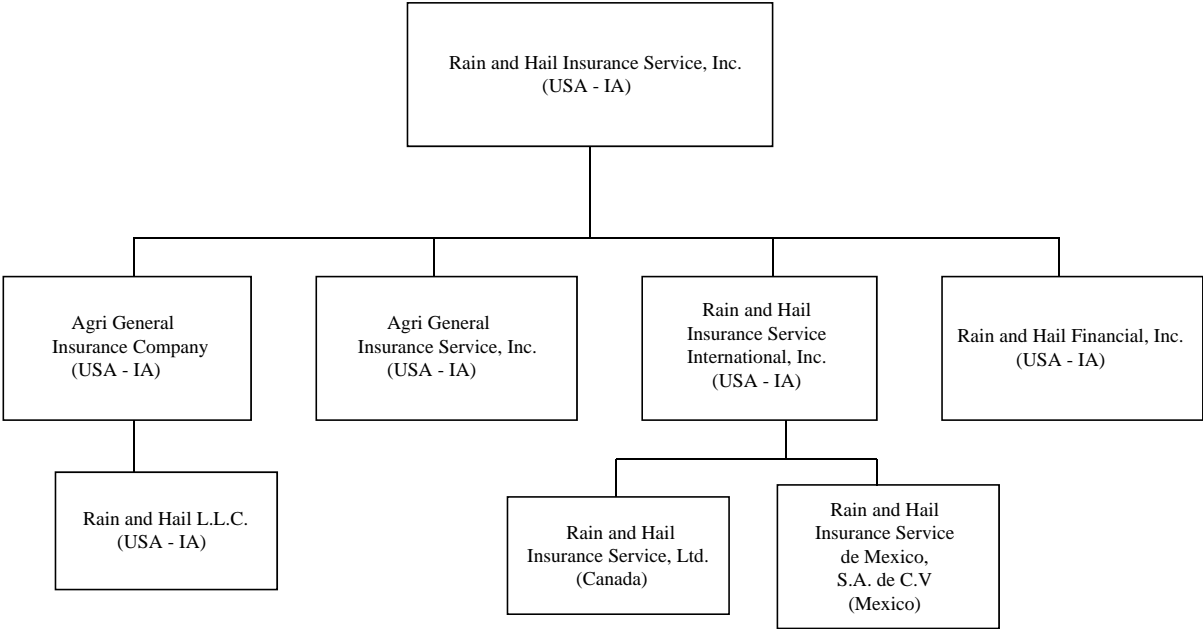
4. After close and at the effective time of merger, William Investment Holdings Corporation will merge into The Chubb Corporation, with the surviving entity to be named 'The Chubb Corporation'.

5. The post-merged "The Chubb Corporation" may then merge into ACE INA Holdings Inc. which may then change its name to some variation of "Chubb INA Holdings."

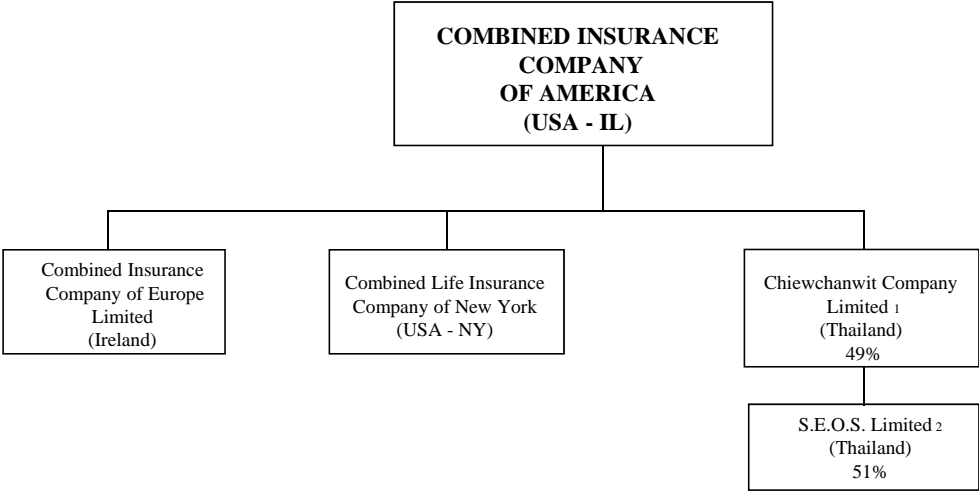
STRUCTURE OF ACE LIMITED



STRUCTURE OF ACE LIMITED

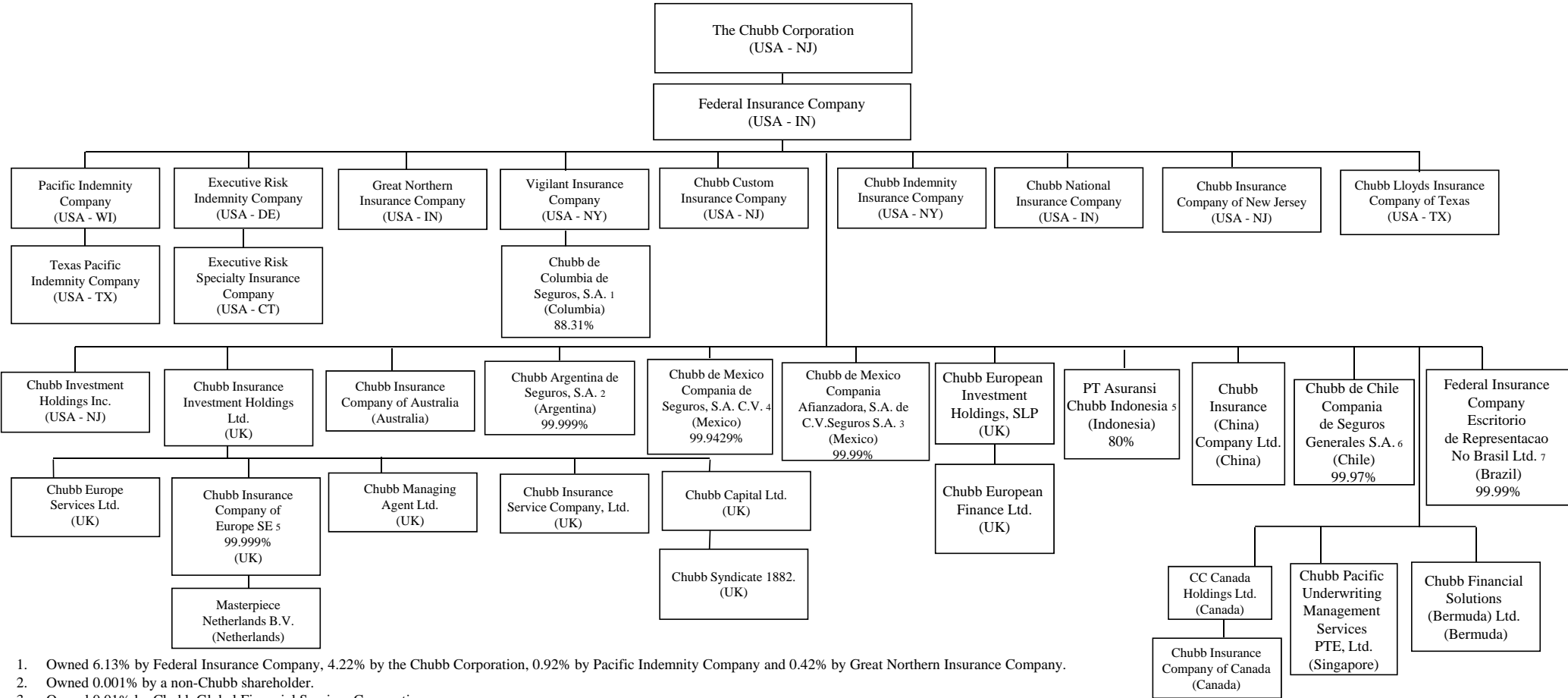


STRUCTURE OF ACE LIMITED



1. Owned 51% by individual Thai shareholders.
2. Owned 49% by Combined Insurance Company of America.

STRUCTURE OF ACE LIMITED



1. Owned 6.13% by Federal Insurance Company, 4.22% by the Chubb Corporation, 0.92% by Pacific Indemnity Company and 0.42% by Great Northern Insurance Company.

2. Owned 0.001% by a non-Chubb shareholder.

3. Owned 0.01% by Chubb Global Financial Services Corporation.

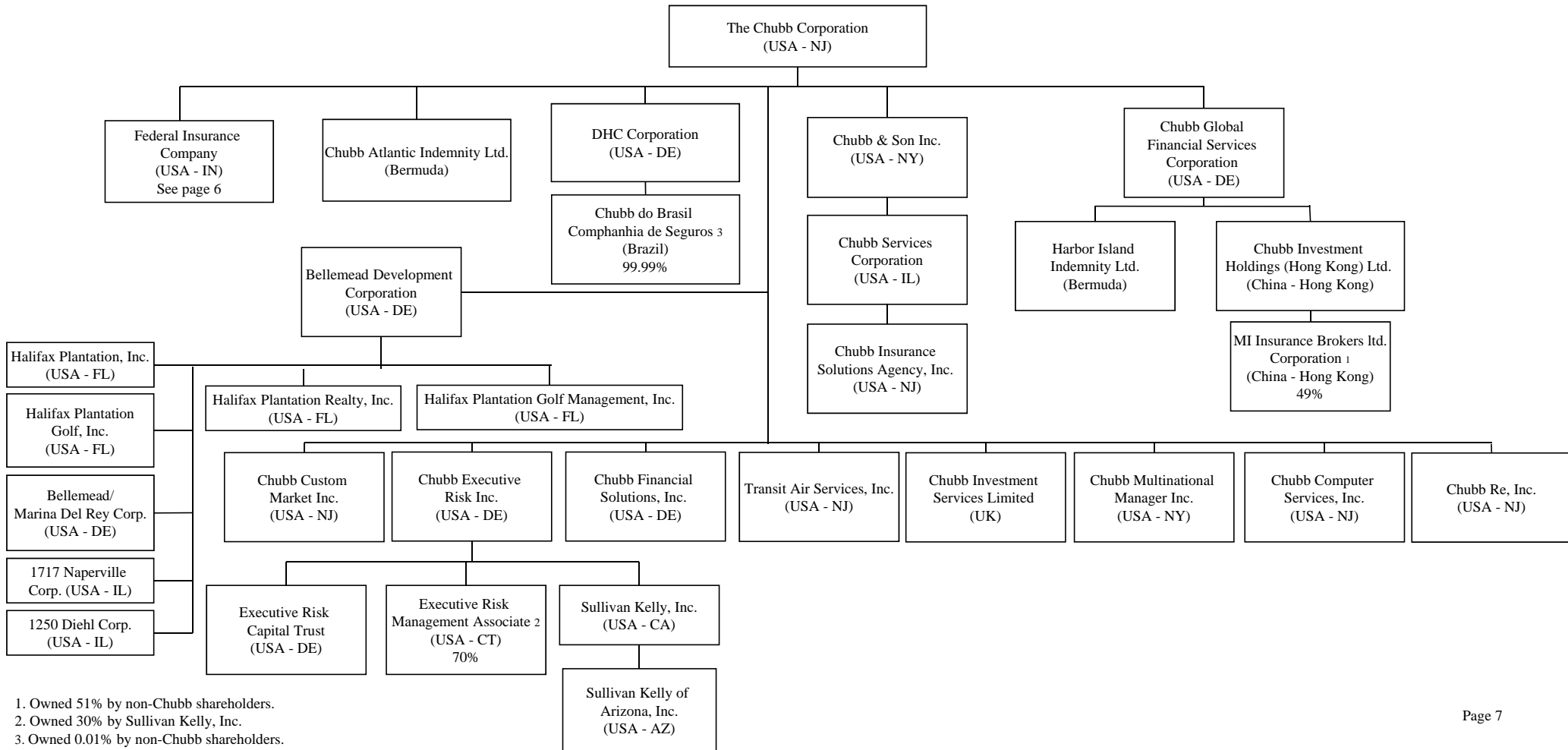
4. Owned 0.0176% by Vigilant Insurance Company, 0.0059% by Great Northern Insurance Company, 0.000002% Chubb Global Financial Services Corporation, 0.0059% by Pacific Indemnity Company, 0.0029% Chubb Insurance Company of Canada and 0.0248% by non-Chubb shareholders. Numbers do not add up to 100% due to rounding.

5. Owned 0.001% by Vigilant Insurance Company and 20% by non-Chubb shareholders. Currently in the midst of a liquidation process.

6. Owned 0.03% by The Chubb Corporation.

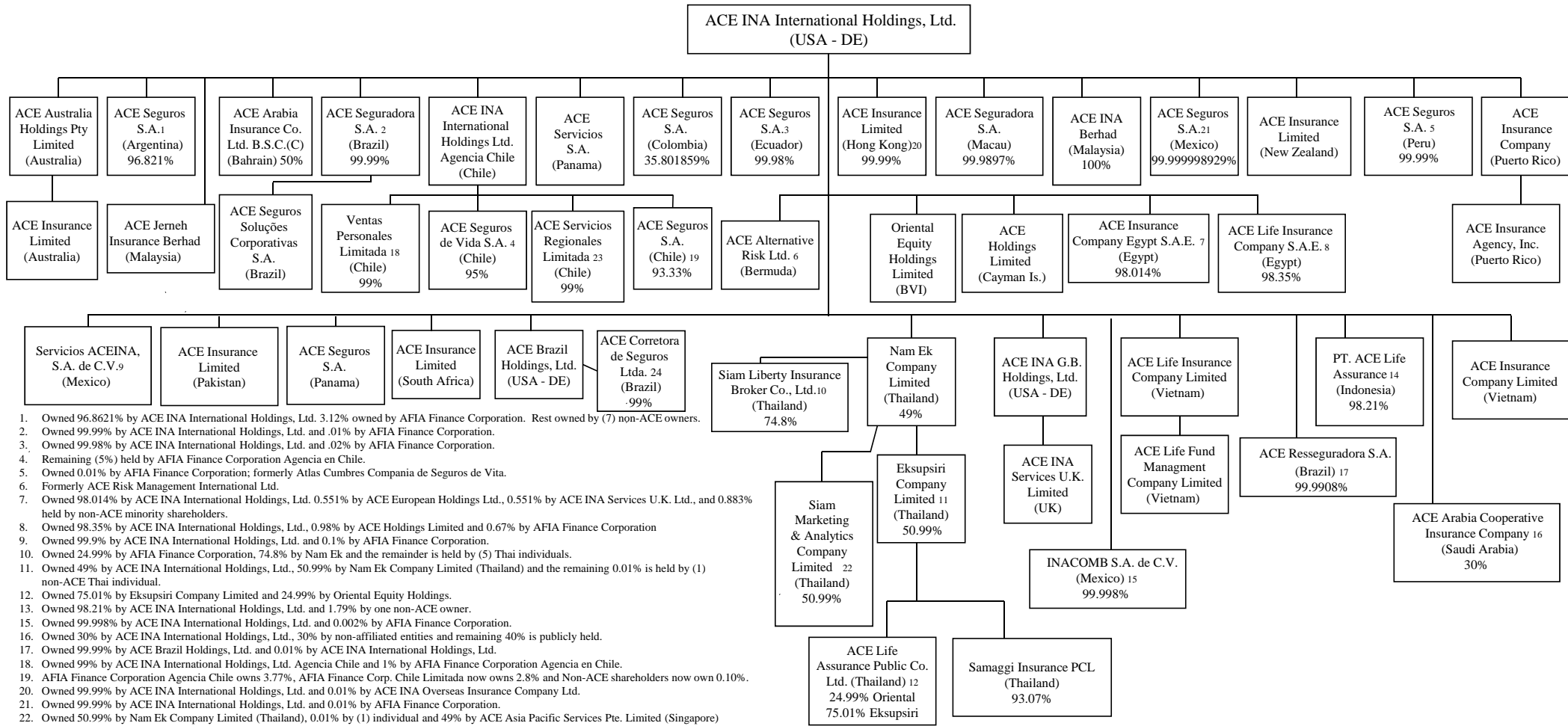
7. Owned 0.01% by Chubb & Son.

STRUCTURE OF ACE LIMITED



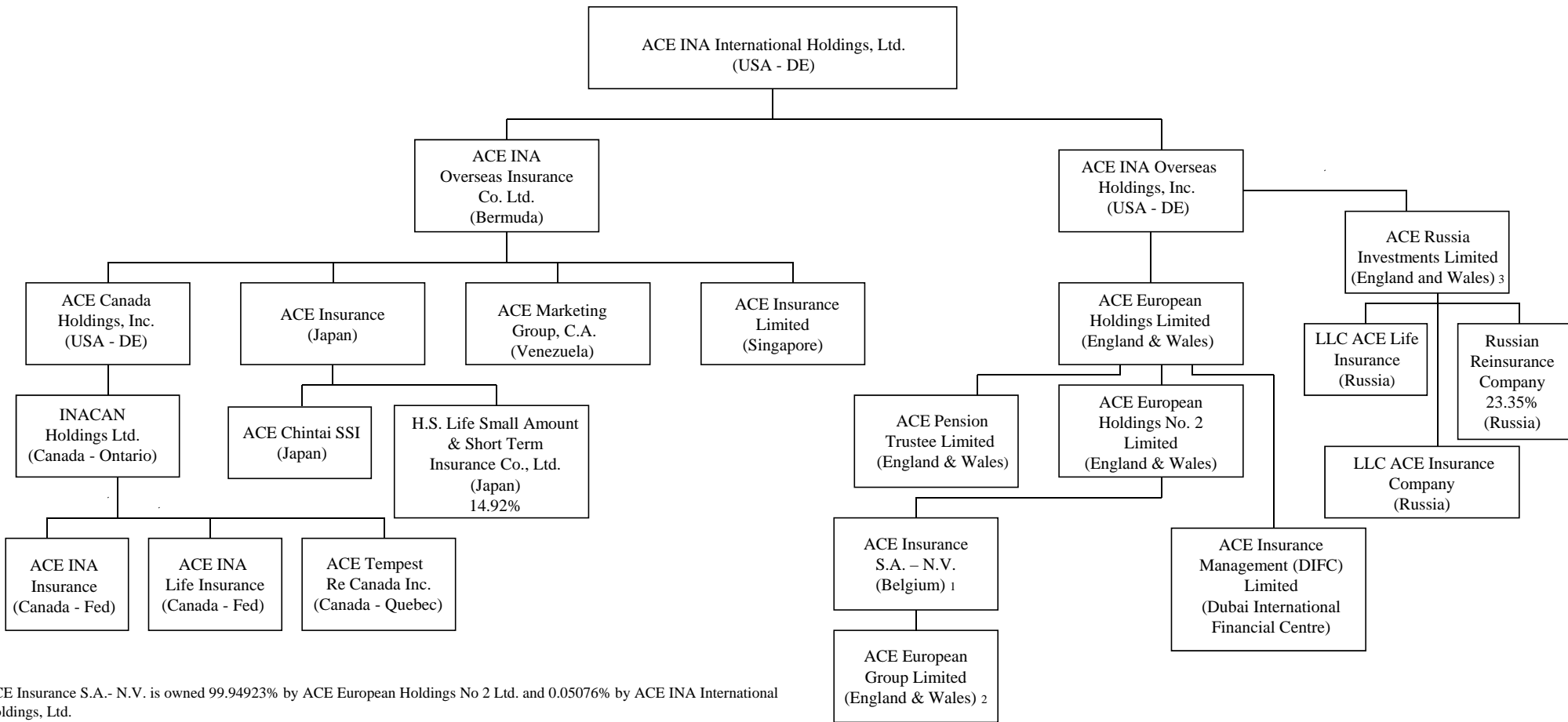
1. Owned 51% by non-Chubb shareholders.
 2. Owned 30% by Sullivan Kelly, Inc.
 3. Owned 0.01% by non-Chubb shareholders.

STRUCTURE OF ACE LIMITED



1. Owned 96.8621% by ACE INA International Holdings, Ltd. 3.12% owned by AFIA Finance Corporation. Rest owned by (7) non-ACE owners.
2. Owned 99.99% by ACE INA International Holdings, Ltd. and .01% by AFIA Finance Corporation.
3. Owned 99.98% by ACE INA International Holdings, Ltd. and .02% by AFIA Finance Corporation.
4. Remaining (5%) held by AFIA Finance Corporation Agencia en Chile.
5. Owned 0.01% by AFIA Finance Corporation; formerly Atlas Cumbres Compania de Seguros de Vita.
6. Formerly ACE Risk Management International Ltd.
7. Owned 98.014% by ACE INA International Holdings, Ltd. 0.551% by ACE European Holdings Ltd., 0.551% by ACE INA Services U.K. Ltd., and 0.883% held by non-ACE minority shareholders.
8. Owned 98.35% by ACE INA International Holdings, Ltd., 0.98% by ACE Holdings Limited and 0.67% by AFIA Finance Corporation
9. Owned 99.9% by ACE INA International Holdings, Ltd. and 0.1% by AFIA Finance Corporation.
10. Owned 24.99% by AFIA Finance Corporation, 74.8% by Nam Ek and the remainder is held by (5) Thai individuals.
11. Owned 49% by ACE INA International Holdings, Ltd., 50.99% by Nam Ek Company Limited (Thailand) and the remaining 0.01% is held by (1) non-ACE Thai individual.
12. Owned 75.01% by Eksupsiri Company Limited and 24.99% by Oriental Equity Holdings.
13. Owned 98.21% by ACE INA International Holdings, Ltd. and 1.79% by one non-ACE owner.
15. Owned 99.998% by ACE INA International Holdings, Ltd. and 0.002% by AFIA Finance Corporation.
16. Owned 30% by ACE INA International Holdings, Ltd., 30% by non-affiliated entities and remaining 40% is publicly held.
17. Owned 99.99% by ACE Brazil Holdings, Ltd. and 0.01% by ACE INA International Holdings, Ltd.
18. Owned 99% by ACE INA International Holdings, Ltd. Agencia Chile and 1% by AFIA Finance Corporation Agencia en Chile.
19. AFIA Finance Corporation Agencia Chile owns 3.77%, AFIA Finance Corp. Chile Limitada now owns 2.8% and Non-ACE shareholders now own 0.10%.
20. Owned 99.99% by ACE INA International Holdings, Ltd. and 0.01% by ACE INA Overseas Insurance Company Ltd.
21. Owned 99.99% by ACE INA International Holdings, Ltd. and 0.01% by AFIA Finance Corporation.
22. Owned 50.99% by Nam Ek Company Limited (Thailand), 0.01% by (1) individual and 49% by ACE Asia Pacific Services Pte. Limited (Singapore)
23. Owned 1% by AFIA Finance Corporation Agencia en Chile
24. Owned 1% by ACE INA International Holdings, Ltd.
25. Beneficially owned by ACE INA International Holdings, Ltd. (99.999932%). The owners of record are: Insurance Company of North America (46.682606%); ACE INA International Holdings, Ltd. (35.801859%); INA Financial Corporation (7.84194%); Century International Reinsurance Company Ltd. (3.921353%); AFIA Finance Corporation (5.752174%) and 3 non-affiliated shareholders (each holding 0.00002267% ,collectively, 0.00006801%).

STRUCTURE OF ACE LIMITED

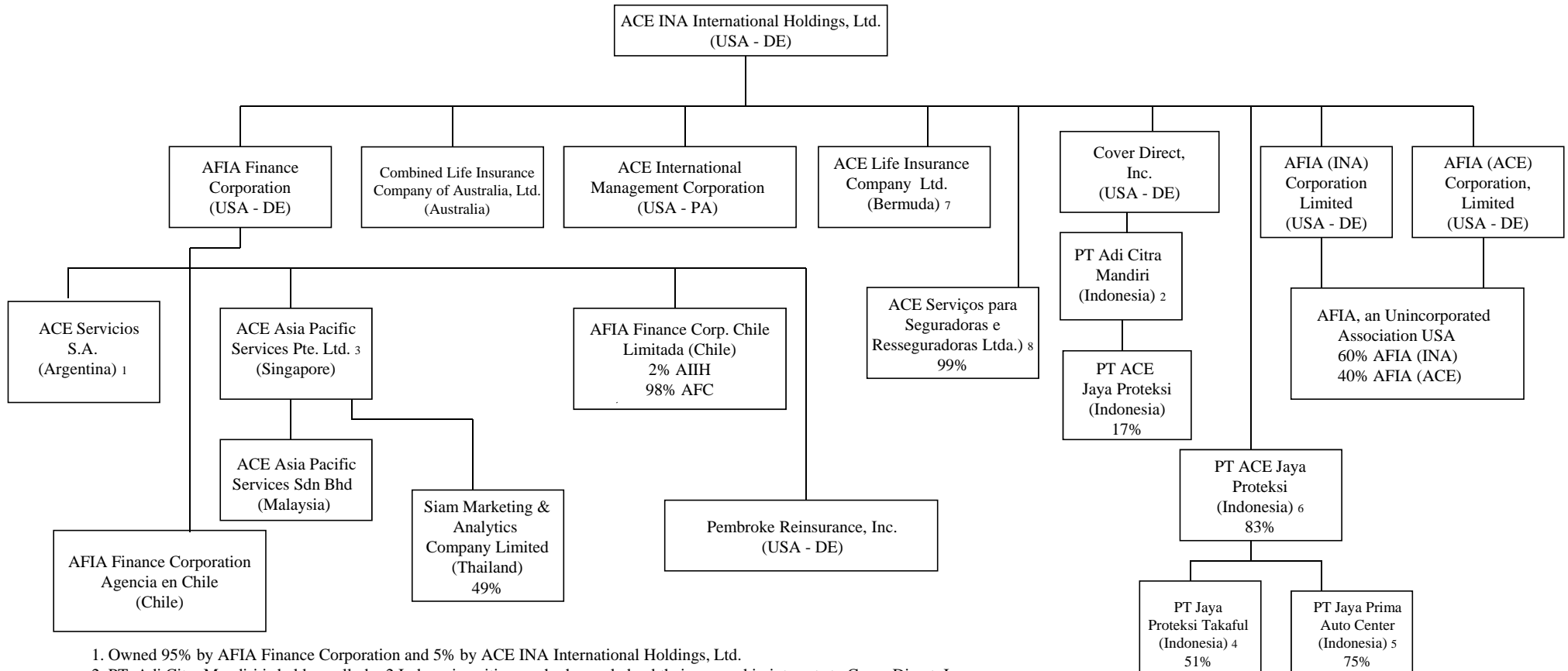


1. ACE Insurance S.A.- N.V. is owned 99.94923% by ACE European Holdings No 2 Ltd. and 0.05076% by ACE INA International Holdings, Ltd.

2. ACE European Group Limited is owned 69.1277% by ACE Insurance S.A. – N.V. and 30.8723% by ACE European Holdings Ltd.

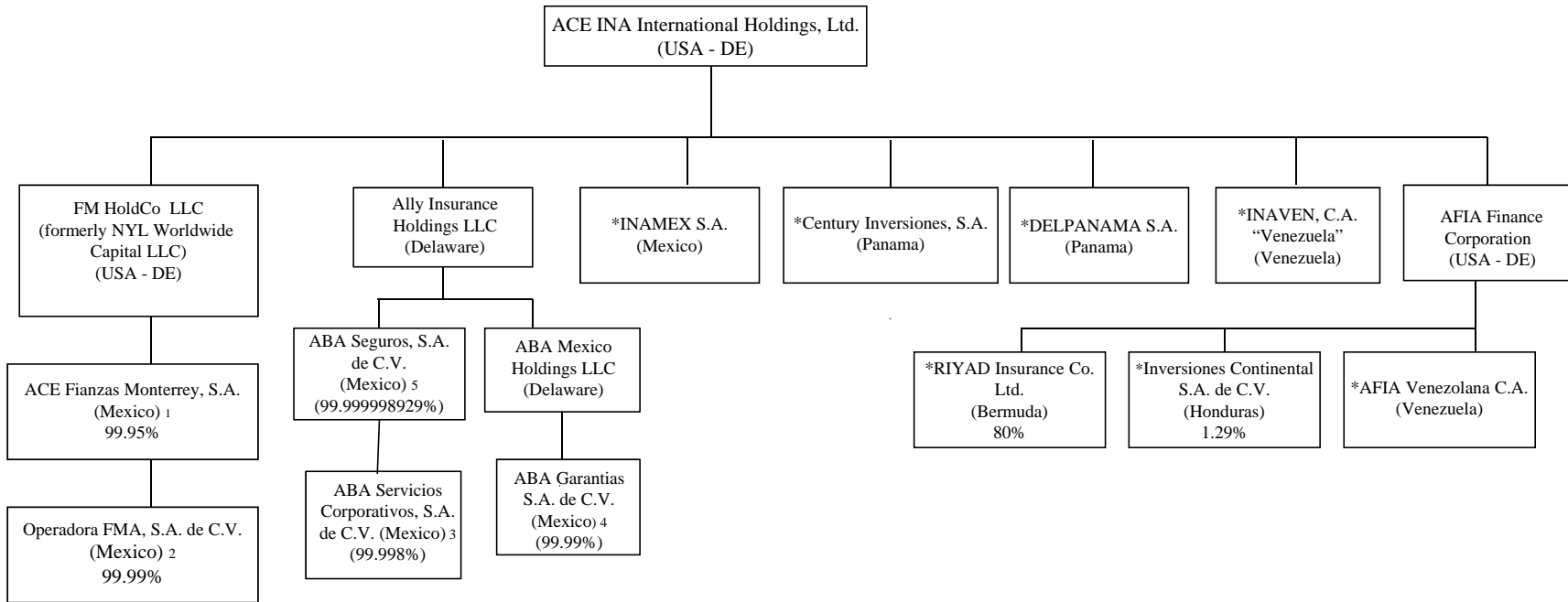
3. ACE Russia Investments Limited is owned 99.999999995% by ACE INA Overseas Holdings, Inc. and owned 0.00000000514682423% by ACE INA International Holdings, Ltd.

STRUCTURE OF ACE LIMITED



1. Owned 95% by AFIA Finance Corporation and 5% by ACE INA International Holdings, Ltd.
2. PT. Adi Citra Mandiri is held equally by 2 Indonesian citizens who have pledged their ownership interests to Cover Direct, Inc.
3. Formerly Safire Private Limited
4. Owned 51% by AJP and 49% by 9 Indonesian citizens
5. Owned 75% by AJP and 25% by 4 Indonesian citizens
6. Owned 17% by PT. Adi Citra Mandiri
7. Company operates through a Hong Kong branch office.
8. Owned 1% by AFIA Finance Corporation.

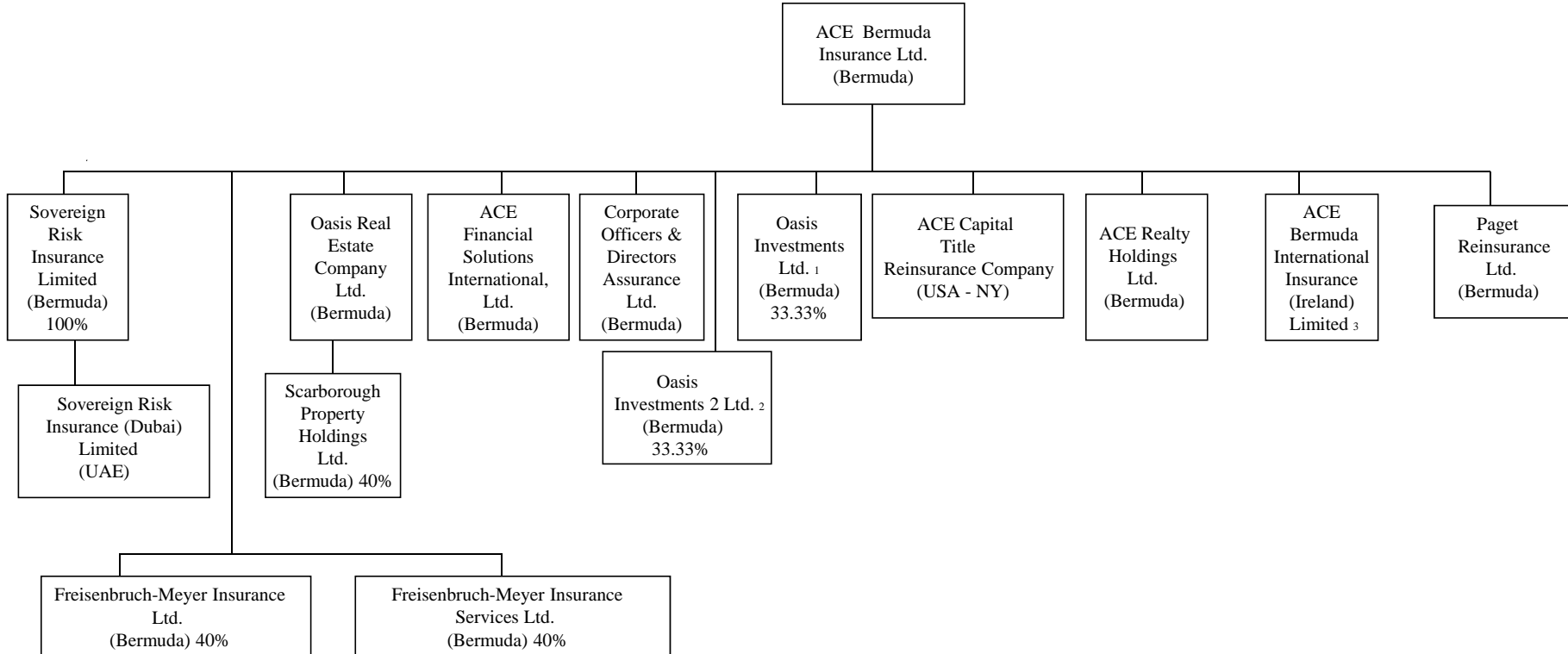
STRUCTURE OF ACE LIMITED



1. Owned 0.05 % by AFIA Finance Corporation
2. Owned 0.01% by AFIA Finance Corporation
3. Owned 0.002% by ABA Garantias S.A. de C.V.
4. Owned 0.01% by AFIA Finance Corp.
5. Owned 0.00000107% by AFIA Finance Corporation.

* Inactive Companies

STRUCTURE OF ACE LIMITED

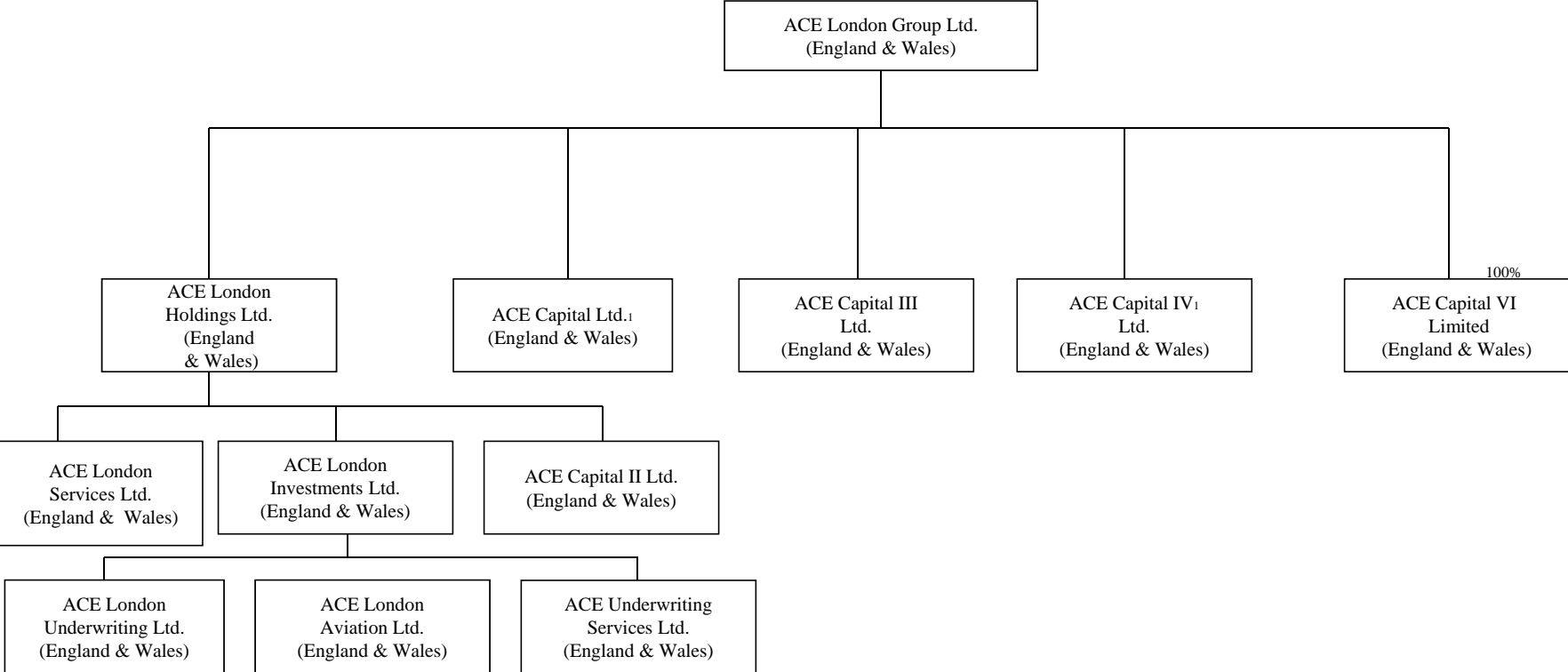


1. Owned 33.33% by ACE Bermuda Insurance Ltd. and 66.66% by ACE Tempest Reinsurance Ltd.

2. Owned 33.33% by ACE Bermuda Insurance Ltd. and 66.66% by ACE Tempest Reinsurance Ltd.

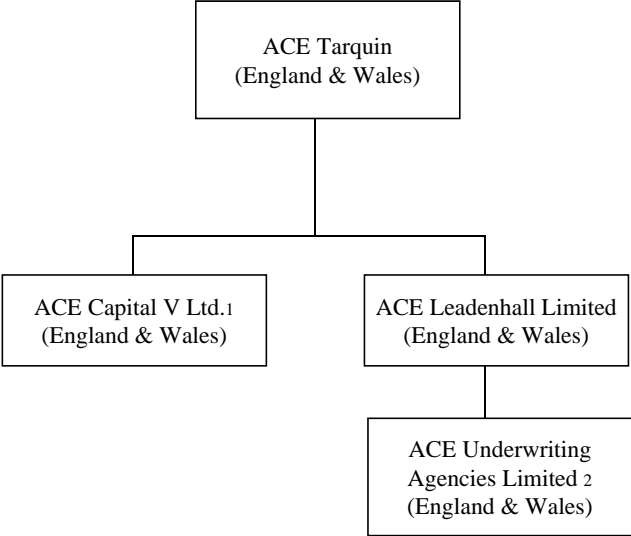
3. Formerly ACE European Markets Insurance Limited

STRUCTURE OF ACE LIMITED



1. Capital Providers

STRUCTURE OF ACE LIMITED



1. Capital Provider
2. Managing Agency