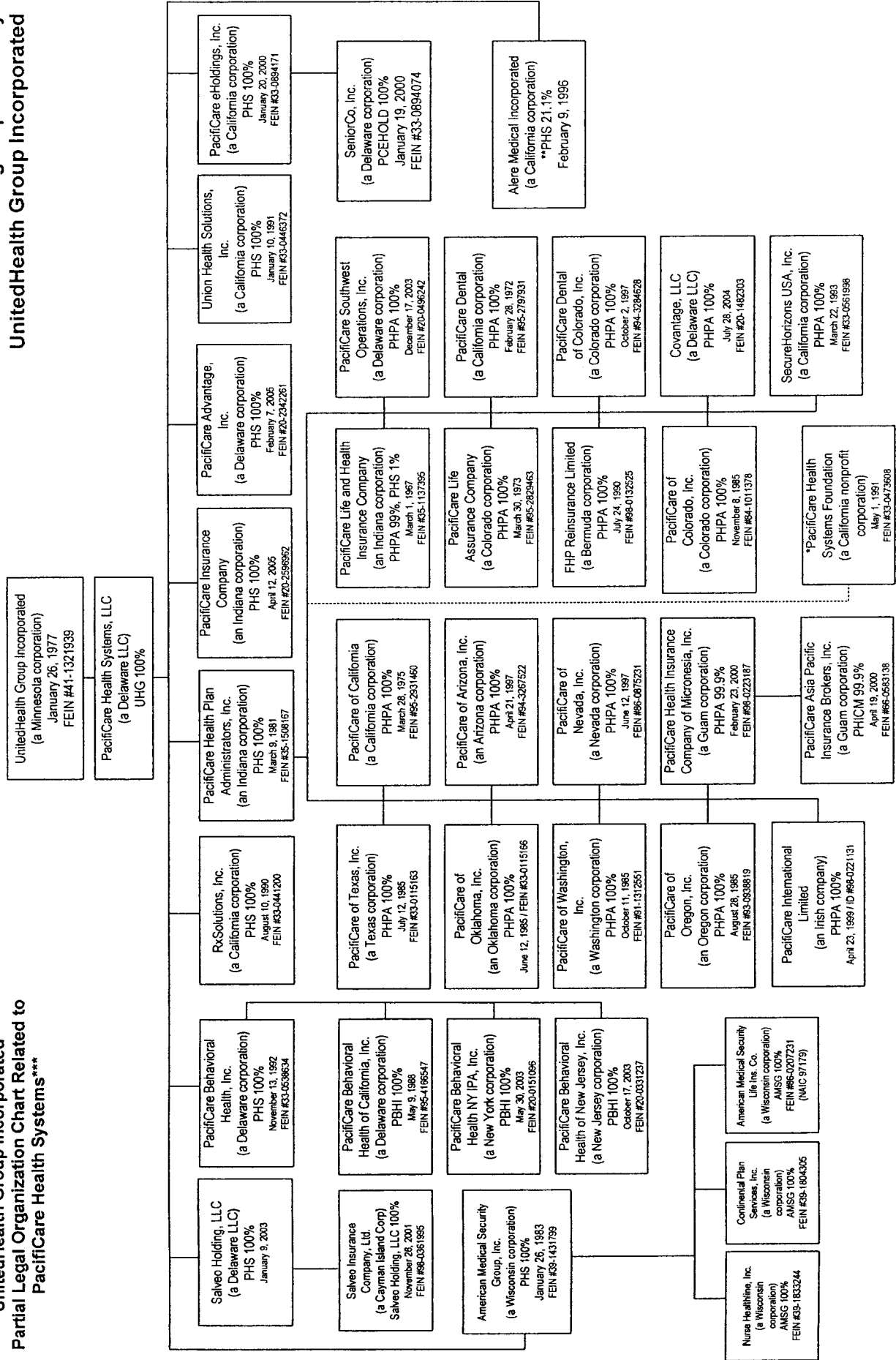


EXHIBIT 3

**UnitedHealth Group Incorporated  
Partial Legal Organization Chart Related to  
PacifiCare Health Systems\*\*\*\***

**Effective following acquisition by  
UnitedHealth Group Incorporated**



\* PacifiCare Health Plan Administrators, Inc. is the sole member of PacifiCare Health Systems Foundation, a California nonprofit corporation.  
 \*\* Ownership interest includes 16,066,245 shares of non-voting preferred stock and warrants to purchase 1,000,000 shares of non-voting preferred stock of Alere Medical Incorporated.  
 \*\*\* This chart assumes the merger of PacifiCare Health Systems, Inc. with and into Point Acquisition, LLC (and not the alternative structure mentioned in the Form A).