



QUARTERLY STATEMENT

As of March 31, 2019
of the Condition and Affairs of the

Capitol Specialty Insurance Corporation

NAIC Group Code.....0501, 0501
(Current Period) (Prior Period)

NAIC Company Code..... 10328

Employer's ID Number..... 39-0988659

Organized under the Laws of WI State of Domicile or Port of Entry WI Country of Domicile US

Incorporated/Organized..... November 10, 1961 Commenced Business..... February 1, 1962

Statutory Home Office 1600 Aspen Commons .. Middleton .. WI .. US .. 53562-4718
(Street and Number) (City or Town, State, Country and Zip Code)

Main Administrative Office 1600 Aspen Commons .. Middleton .. WI .. US .. 53562-4718
(Street and Number) (City or Town, State, Country and Zip Code) 608-829-4200
(Area Code) (Telephone Number)

Mail Address P.O. Box 5900 .. Madison .. WI .. US .. 53705-0900
(Street and Number or P. O. Box) (City or Town, State, Country and Zip Code)

Primary Location of Books and Records 1600 Aspen Commons .. Middleton .. WI .. US .. 53562-4718
(Street and Number) (City or Town, State, Country and Zip Code) 608-829-4200
(Area Code) (Telephone Number)

Internet Web Site Address www.capspecialty.com

Statutory Statement Contact Victoria L Olsen 608-829-4853
(Name) (Area Code) (Telephone Number) (Extension)
financialfilings@capspecialty.com 608-829-7414
(E-Mail Address) (Fax Number)

OFFICERS

Name	Title	Name	Title
1. Stephen Jay Sills	CEO, President	2. Antonio Celli	General Counsel, V.P., Secretary
3. John Ervin Rzepinski	Vice President, Treasurer, CFO	4. Daniel Matthew McGinnis	President - Property & Casualty and Professional Lines

OTHER	
Suzanne Michele Broadbent	Assistant Secretary
Mark Steven Dalakis	Controller
Seth Howard Fischer	Vice President
John Langton Sennott Jr.	Vice President
Melanie Fiona Wilhelm	Chief Compliance Officer
Todd Steven Burrick	Vice President, Head of Actuarial
Joshua Christopher Deno	Assistant Treasurer
Doron David Hai	Vice President
Julianne Splain	Vice President
Brian Andrew Wert	Chief Technology and Information Security Officer

DIRECTORS OR TRUSTEES

Stephen Jay Sills Daniel Matthew McGinnis John Ervin Rzepinski John Langton Sennott Jr.

State of..... Wisconsin
County of.... Dane

The officers of this reporting entity being duly sworn, each depose and say that they are the described officers of said reporting entity, and that on the reporting period stated above, all of the herein described assets were the absolute property of the said reporting entity, free and clear from any liens or claims thereon, except as herein stated, and that this statement, together with related exhibits, schedules and explanations therein contained, annexed or referred to, is a full and true statement of all the assets and liabilities and of the condition and affairs of the said reporting entity as of the reporting period stated above, and of its income and deductions therefrom for the period ended, and have been completed in accordance with the NAIC Annual Statement Instructions and Accounting Practices and Procedures manual except to the extent that: (1) state law may differ; or, (2) that state rules or regulations require differences in reporting not related to accounting practices and procedures, according to the best of their information, knowledge and belief, respectively. Furthermore, the scope of this attestation by the described officers also includes the related corresponding electronic filing with the NAIC, when required, that is an exact copy (except for formatting differences due to electronic filing) of the enclosed statement. The electronic filing may be requested by various regulators in lieu of or in addition to the enclosed statement.

(Signature) Stephen Jay Sills	(Signature) Antonio Celli	(Signature) John Ervin Rzepinski
1. (Printed Name)	2. (Printed Name)	3. (Printed Name)
CEO, President	General Counsel, V.P., Secretary	Vice President, Treasurer, CFO
(Title)	(Title)	(Title)

Subscribed and sworn to before me
This _____ day of May, 2019

a. Is this an original filing? Yes [X] No []
b. If no: 1. State the amendment number _____
2. Date filed _____
3. Number of pages attached _____

Maria M. Anderson
My commission expires 4/17/2023

ASSETS

	Current Statement Date			December 31 Prior Year Net Admitted Assets
	1 Assets	2 Nonadmitted Assets	3 Net Admitted Assets (Cols. 1 - 2)	
1. Bonds.....	104,051,561		104,051,561	93,092,918
2. Stocks:				
2.1 Preferred stocks.....			0	
2.2 Common stocks.....	7,370,593		7,370,593	13,443,451
3. Mortgage loans on real estate:				
3.1 First liens.....			0	
3.2 Other than first liens.....			0	
4. Real estate:				
4.1 Properties occupied by the company (less \$.....0 encumbrances).....			0	
4.2 Properties held for the production of income (less \$.....0 encumbrances).....			0	
4.3 Properties held for sale (less \$.....0 encumbrances).....			0	
5. Cash (\$.....0), cash equivalents (\$....3,361,110) and short-term investments (\$.....0).....	3,361,110		3,361,110	4,858,328
6. Contract loans (including \$.....0 premium notes).....			0	
7. Derivatives.....			0	
8. Other invested assets.....			0	
9. Receivables for securities.....			0	83,603
10. Securities lending reinvested collateral assets.....			0	
11. Aggregate write-ins for invested assets.....	0	0	0	0
12. Subtotals, cash and invested assets (Lines 1 to 11).....	114,783,264	0	114,783,264	111,478,300
13. Title plants less \$.....0 charged off (for Title Insurers only).....			0	
14. Investment income due and accrued.....	797,549		797,549	663,133
15. Premiums and considerations:				
15.1 Uncollected premiums and agents' balances in the course of collection.....	16,787,149	1,386,614	15,400,535	11,050,092
15.2 Deferred premiums, agents' balances and installments booked but deferred and not yet due (including \$....2,187,357 earned but unbilled premiums).....	15,868,368	218,736	15,649,632	12,947,223
15.3 Accrued retrospective premiums (\$.....0) and contracts subject to redetermination (\$.....0).....			0	
16. Reinsurance:				
16.1 Amounts recoverable from reinsurers.....	16,515,885		16,515,885	17,621,296
16.2 Funds held by or deposited with reinsured companies.....			0	
16.3 Other amounts receivable under reinsurance contracts.....			0	
17. Amounts receivable relating to uninsured plans.....			0	
18.1 Current federal and foreign income tax recoverable and interest thereon.....			0	97,918
18.2 Net deferred tax asset.....	1,390,770		1,390,770	1,087,905
19. Guaranty funds receivable or on deposit.....			0	
20. Electronic data processing equipment and software.....			0	
21. Furniture and equipment, including health care delivery assets (\$.....0).....			0	
22. Net adjustment in assets and liabilities due to foreign exchange rates.....			0	
23. Receivables from parent, subsidiaries and affiliates.....	8,249,534		8,249,534	4,593,963
24. Health care (\$.....0) and other amounts receivable.....			0	
25. Aggregate write-ins for other than invested assets.....	0	0	0	0
26. Total assets excluding Separate Accounts, Segregated Accounts and Protected Cell Accounts (Lines 12 through 25).....	174,382,519	1,605,350	172,787,169	159,539,830
27. From Separate Accounts, Segregated Accounts and Protected Cell Accounts.....			0	
28. Total (Lines 26 and 27).....	174,382,519	1,605,350	172,787,169	159,539,830

DETAILS OF WRITE-INS

1101.			0	
1102.			0	
1103.			0	
1198. Summary of remaining write-ins for Line 11 from overflow page.....	0	0	0	0
1199. Totals (Lines 1101 thru 1103 plus 1198) (Line 11 above).....	0	0	0	0
2501.			0	
2502.			0	
2503.			0	
2598. Summary of remaining write-ins for Line 25 from overflow page.....	0	0	0	0
2599. Totals (Lines 2501 thru 2503 plus 2598) (Line 25 above).....	0	0	0	0

Statement for March 31, 2019 of the **Capitol Specialty Insurance Corporation**
LIABILITIES, SURPLUS AND OTHER FUNDS

	1 Current Statement Date	2 December 31 Prior Year
1. Losses (current accident year \$....4,979,116).....	39,174,871	37,401,080
2. Reinsurance payable on paid losses and loss adjustment expenses.....		
3. Loss adjustment expenses.....	8,222,093	7,880,182
4. Commissions payable, contingent commissions and other similar charges.....	115,626	541,713
5. Other expenses (excluding taxes, licenses and fees).....		
6. Taxes, licenses and fees (excluding federal and foreign income taxes).....	9,378	9,378
7.1 Current federal and foreign income taxes (including \$....368,668 on realized capital gains (losses)).....	556,061	
7.2 Net deferred tax liability.....		
8. Borrowed money \$.....0 and interest thereon \$.....0.....		
9. Unearned premiums (after deducting unearned premiums for ceded reinsurance of \$....99,211,277 and including warranty reserves of \$.....0 and accrued accident and health experience rating refunds including \$.....0 for medical loss ratio rebate per the Public Health Service Act).....	22,584,398	22,432,498
10. Advance premium.....		
11. Dividends declared and unpaid:		
11.1 Stockholders.....		
11.2 Policyholders.....		
12. Ceded reinsurance premiums payable (net of ceding commissions).....	38,318,095	30,525,689
13. Funds held by company under reinsurance treaties.....		
14. Amounts withheld or retained by company for account of others.....		
15. Remittances and items not allocated.....		
16. Provision for reinsurance (including \$.....0 certified).....		
17. Net adjustments in assets and liabilities due to foreign exchange rates.....		
18. Drafts outstanding.....		
19. Payable to parent, subsidiaries and affiliates.....	53,404	
20. Derivatives.....		
21. Payable for securities.....	1,530,249	
22. Payable for securities lending.....		
23. Liability for amounts held under uninsured plans.....		
24. Capital notes \$.....0 and interest thereon \$.....0.....		
25. Aggregate write-ins for liabilities.....	1,040	1,038
26. Total liabilities excluding protected cell liabilities (Lines 1 through 25).....	110,565,215	98,791,578
27. Protected cell liabilities.....		
28. Total liabilities (Lines 26 and 27).....	110,565,215	98,791,578
29. Aggregate write-ins for special surplus funds.....	0	0
30. Common capital stock.....	6,500,000	6,500,000
31. Preferred capital stock.....		
32. Aggregate write-ins for other than special surplus funds.....	0	0
33. Surplus notes.....		
34. Gross paid in and contributed surplus.....	34,475,652	34,475,652
35. Unassigned funds (surplus).....	21,246,302	19,772,600
36. Less treasury stock, at cost:		
36.10.000 shares common (value included in Line 30 \$.....0).....		
36.20.000 shares preferred (value included in Line 31 \$.....0).....		
37. Surplus as regards policyholders (Lines 29 to 35, less 36).....	62,221,954	60,748,252
38. Totals (Page 2, Line 28, Col. 3).....	172,787,169	158,539,830

DETAILS OF WRITE-INS

2501. Funds held - unclaimed property.....	1,040	1,038
2502.		
2503.		
2598. Summary of remaining write-ins for Line 25 from overflow page.....	0	0
2599. Totals (Lines 2501 thru 2503 plus 2598) (Line 25 above).....	1,040	1,038
2901.		
2902.		
2903.		
2998. Summary of remaining write-ins for Line 29 from overflow page.....	0	0
2999. Totals (Lines 2901 thru 2903 plus 2998) (Line 29 above).....	0	0
3201.		
3202.		
3203.		
3298. Summary of remaining write-ins for Line 32 from overflow page.....	0	0
3299. Totals (Lines 3201 thru 3203 plus 3298) (Line 32 above).....	0	0

Statement for March 31, 2019 of the **Capitol Specialty Insurance Corporation**
STATEMENT OF INCOME

	1 Current Year to Date	2 Prior Year to Date	3 Prior Year Ended December 31
UNDERWRITING INCOME			
1. Premiums earned:			
1.1 Direct..... (written \$.....53,550,898).....	52,401,635	43,630,912	195,530,247
1.2 Assumed..... (written \$.....11,486,030).....	11,346,130	10,000,836	43,478,022
1.3 Ceded..... (written \$.....53,550,898).....	52,401,635	43,630,912	195,530,247
1.4 Net..... (written \$.....11,486,030).....	11,346,130	10,000,836	43,478,022
DEDUCTIONS:			
2. Losses incurred (current accident year \$.....5,167,142):			
2.1 Direct.....	26,918,628	20,852,402	92,304,257
2.2 Assumed.....	4,884,145	3,569,126	16,882,593
2.3 Ceded.....	26,938,989	20,852,402	92,304,255
2.4 Net.....	4,873,774	3,569,126	16,882,595
3. Loss adjustment expenses incurred.....	1,904,026	1,572,445	7,060,905
4. Other underwriting expenses incurred.....	4,874,076	4,731,891	19,311,283
5. Aggregate write-ins for underwriting deductions.....	0	0	0
6. Total underwriting deductions (Lines 2 through 5).....	11,451,876	9,873,462	43,264,783
7. Net income of protected cells.....			
8. Net underwriting gain (loss) (Line 1 minus Line 6 + Line 7).....	(105,746)	127,374	213,239
INVESTMENT INCOME			
9. Net investment income earned.....	788,145	551,346	2,565,385
10. Net realized capital gains (losses) less capital gains tax of \$.....433,388.....	1,630,366	124,693	126,066
11. Net investment gain (loss) (Lines 9 + 10).....	2,418,511	676,039	2,691,451
OTHER INCOME			
12. Net gain or (loss) from agents' or premium balances charged off (amount recovered \$.....46,853 amount charged off \$.....0).....	46,853	(11,239)	(72,252)
13. Finance and service charges not included in premiums.....	3,555	3,181	14,545
14. Aggregate write-ins for miscellaneous income.....	(70)	(114)	(8,761)
15. Total other income (Lines 12 through 14).....	50,338	(8,172)	(66,468)
16. Net income before dividends to policyholders, after capital gains tax and before all other federal and foreign income taxes (Lines 8 + 11 + 15).....	2,363,103	795,241	2,838,232
17. Dividends to policyholders.....			
18. Net income, after dividends to policyholders, after capital gains tax and before all other federal and foreign income taxes (Line 16 minus Line 17).....	2,363,103	795,241	2,838,232
19. Federal and foreign income taxes incurred.....	220,590	154,929	662,234
20. Net income (Line 18 minus Line 19) (to Line 22).....	2,142,513	640,312	2,175,998
CAPITAL AND SURPLUS ACCOUNT			
21. Surplus as regards policyholders, December 31 prior year.....	60,748,251	58,914,919	58,914,919
22. Net income (from Line 20).....	2,142,513	640,312	2,175,998
23. Net transfers (to) from Protected Cell accounts.....			
24. Change in net unrealized capital gains or (losses) less capital gains tax of \$.....(174,661).....	(657,135)	(241,460)	(646,330)
25. Change in net unrealized foreign exchange capital gain (loss).....			
26. Change in net deferred income tax.....	128,184	72,443	232,301
27. Change in nonadmitted assets.....	(139,859)	(55,406)	70,363
28. Change in provision for reinsurance.....			
29. Change in surplus notes.....			
30. Surplus (contributed to) withdrawn from protected cells.....			
31. Cumulative effect of changes in accounting principles.....			
32. Capital changes:			
32.1 Paid in.....			
32.2 Transferred from surplus (Stock Dividend).....			
32.3 Transferred to surplus.....			
33. Surplus adjustments:			
33.1 Paid in.....			
33.2 Transferred to capital (Stock Dividend).....			
33.3 Transferred from capital.....			
34. Net remittances from or (to) Home Office.....			
35. Dividends to stockholders.....			
36. Change in treasury stock.....			
37. Aggregate write-ins for gains and losses in surplus.....	0	0	0
38. Change in surplus as regards policyholders (Lines 22 through 37).....	1,473,703	415,869	1,833,332
39. Surplus as regards policyholders, as of statement date (Lines 21 plus 38).....	62,221,954	59,330,808	60,748,251
DETAILS OF WRITE-INS			
0501.....			
0502.....			
0503.....			
0598. Summary of remaining write-ins for Line 5 from overflow page.....	0	0	0
0599. Totals (Lines 0501 thru 0503 plus 0598) (Line 5 above).....	0	0	0
1401. Miscellaneous expense.....	(70)	(114)	(8,761)
1402.....			
1403.....			
1498. Summary of remaining write-ins for Line 14 from overflow page.....	0	0	0
1499. Totals (Lines 1401 thru 1403 plus 1498) (Line 14 above).....	(70)	(114)	(8,761)
3701.....			
3702.....			
3703.....			
3798. Summary of remaining write-ins for Line 37 from overflow page.....	0	0	0
3799. Totals (Lines 3701 thru 3703 plus 3798) (Line 37 above).....	0	0	0

CASH FLOW

	1 Current Year to Date	2 Prior Year To Date	3 Prior Year Ended December 31
CASH FROM OPERATIONS			
1. Premiums collected net of reinsurance.....	12,097,725	10,290,979	48,318,140
2. Net investment income.....	770,480	529,929	2,978,333
3. Miscellaneous income.....	50,338	(8,172)	(66,468)
4. Total (Lines 1 through 3).....	12,918,543	10,812,736	51,230,005
5. Benefit and loss related payments.....	1,994,572	2,043,497	17,852,746
6. Net transfers to Separate Accounts, Segregated Accounts and Protected Cell Accounts.....			
7. Commissions, expenses paid and aggregate write-ins for deductions.....	6,662,278	7,154,724	26,330,998
8. Dividends paid to policyholders.....			
9. Federal and foreign income taxes paid (recovered) net of \$.....0 tax on capital gains (losses).....	(1)		2,625,609
10. Total (Lines 5 through 9).....	8,656,849	9,198,221	46,809,353
11. Net cash from operations (Line 4 minus Line 10).....	4,261,694	1,614,515	4,420,652
CASH FROM INVESTMENTS			
12. Proceeds from investments sold, matured or repaid:			
12.1 Bonds.....	3,930,042	5,545,589	21,226,643
12.2 Stocks.....	7,457,512	508,289	7,730,691
12.3 Mortgage loans.....			
12.4 Real estate.....			
12.5 Other invested assets.....			
12.6 Net gains or (losses) on cash, cash equivalents and short-term investments.....		(20)	(46)
12.7 Miscellaneous proceeds.....	1,613,852	48,580	
12.8 Total investment proceeds (Lines 12.1 to 12.7).....	13,001,406	6,102,418	28,957,286
13. Cost of investments acquired (long-term only):			
13.1 Bonds.....	14,926,689	7,254,894	31,714,220
13.2 Stocks.....	231,460	3,370,886	6,821,443
13.3 Mortgage loans.....			
13.4 Real estate.....			
13.5 Other invested assets.....			
13.6 Miscellaneous applications.....		60,450	83,603
13.7 Total investments acquired (Lines 13.1 to 13.6).....	15,158,149	10,686,242	38,619,266
14. Net increase or (decrease) in contract loans and premium notes.....			
15. Net cash from investments (Line 12.8 minus Line 13.7 and Line 14).....	(2,156,743)	(4,583,824)	(8,661,978)
CASH FROM FINANCING AND MISCELLANEOUS SOURCES			
16. Cash provided (applied):			
16.1 Surplus notes, capital notes.....			
16.2 Capital and paid in surplus, less treasury stock.....			
16.3 Borrowed funds.....			
16.4 Net deposits on deposit-type contracts and other insurance liabilities.....			
16.5 Dividends to stockholders.....			
16.6 Other cash provided (applied).....	(3,602,169)	1,683,930	5,872,533
17. Net cash from financing and miscellaneous sources (Lines 16.1 through 16.4 minus Line 16.5 plus Line 16.6).....	(3,602,169)	1,683,930	5,872,533
RECONCILIATION OF CASH, CASH EQUIVALENTS AND SHORT-TERM INVESTMENTS			
18. Net change in cash, cash equivalents and short-term investments (Line 11 plus Line 15 plus Line 17).....	(1,497,218)	(1,285,379)	631,207
19. Cash, cash equivalents and short-term investments:			
19.1 Beginning of year.....	4,858,328	4,227,121	4,227,121
19.2 End of period (Line 18 plus Line 19.1).....	3,361,110	2,941,742	4,858,328

Note: Supplemental disclosures of cash flow information for non-cash transactions:

20.0001			
---------	--	--	--

NOTES TO FINANCIAL STATEMENTS

Note 1 – Summary of Significant Accounting Policies and Going Concern

A. Accounting Practices
 Capitol Specialty Insurance Corporation (the Company's) statutory-basis financial statements are prepared in accordance with accounting practices prescribed or permitted by the State of Wisconsin Office of the Commissioner of Insurance (OCI). The state of Wisconsin requires insurance companies domiciled in the state of Wisconsin to prepare their statutory financial statements in accordance with the National Association of Insurance Commissioners' (NAIC) Accounting Practices and Procedures Manual subject to any deviations prescribed or permitted by the Wisconsin Insurance Department.

Currently, "prescribed" statutory accounting practices are interspersed throughout state insurance laws and regulations, the National Association of Insurance Commissioners (NAIC) Accounting Practices and Procedures Manual and a variety of other NAIC publications. "Permitted" statutory accounting practices encompass all accounting practices that are not prescribed; such practices may differ from state to state, may differ from company to company within a state, and may change in the future. The Company did not utilize any permitted practices in 2019 or 2018.

	SSAP #	F/S Page	F/S Line #	Current Year to Date	2018
NET INCOME					
(1) The Company state basis (Page 4, Line 20, Columns 1 & 3)	XXX	XXX	XXX	\$ 2,142,513	\$ 2,175,998
(2) State Prescribed Practice that are an increase/(decrease) from NAIC SAP				\$	\$
(3) State Permitted Practice that are an increase/(decrease) from NAIC SAP				\$	\$
(4) NAIC SAP (1 – 2 – 3 = 4)	XXX	XXX	XXX	\$ 2,142,513	\$ 2,175,998
SURPLUS					
(5) The Company state basis (Page 3, line 37, Columns 1 & 2)	XXX	XXX	XXX	\$ 62,221,954	\$ 60,748,252
(6) State Prescribed Practice that are an increase/(decrease) from NAIC SAP				\$	\$
(7) State Permitted Practice that are an increase/(decrease) from NAIC SAP				\$	\$
(8) NAIC SAP (5 – 6 – 7 = 8)	XXX	XXX	XXX	\$ 62,221,954	\$ 60,748,252

C. Accounting Policy

(2) Basis for Bonds, Mandatory Convertible Securities, SVO-Identified Investments and Amortization Method

Bonds not backed by other loans are principally stated at amortized cost using the interest method.

(6) Basis for Loan-Backed Securities and Adjustment Methodology

Single-class and multi-class mortgage-backed/asset-backed securities are valued at amortized cost using the interest method, including anticipated pre-payments. Pre-payment assumptions are obtained from dealer surveys or internal estimates and are based on the current interest rate and economic environment. The retrospective adjustment method is used to value all such securities.

D. Going Concern

Management has evaluated recent conditions and events and does not have substantial doubt about the Company's ability to continue as a going concern.

Note 2 – Accounting Changes and Corrections of Errors

No significant changes

Note 3 – Business Combinations and Goodwill

No significant changes

Note 4 – Discontinued Operations

No significant changes

Note 5 – Investments

D. Loan-Backed Securities

(1) Description of Sources Used to Determine Prepayment Assumptions

Prepayment assumptions for Mortgage-Backed Securities, Collateralized Mortgage Obligations and Other Structured Securities were generated using a purchased prepayment model. The prepayment model uses a number of factors to estimate prepayment activity including the time of year (seasonality), current levels or interest rates (refinancing incentive), economic activity (including housing turnover) and term and age of the underlying collateral (turnout, seasoning).

(2) Securities with Recognized Other-Than-Temporary Impairment

There were no other-than-temporary impairments recorded during the year.

(3) Recognized OTTI securities

There were no other-than-temporary impairments (OTTI) for loan-backed securities held at the end of the year.

NOTES TO FINANCIAL STATEMENTS

- (4) All impaired securities (fair value is less than cost or amortized cost) for which an other-than-temporary impairment has not been recognized in earnings as a realized loss (including securities with a recognized other-than-temporary impairment for non-interest related declines when a non-recognized interest related impairment remains):

a. The aggregate amount of unrealized losses:	1. Less than 12 Months	\$	141,980
	2. 12 Months or Longer	\$	84,205
b. The aggregate related fair value of securities with unrealized losses:	1. Less than 12 Months	\$	14,579,485
	2. 12 Months or Longer	\$	7,083,624

- (5) Information Investor Considered in Reaching Conclusion that Impairments are Not Other-Than-Temporary

All loan-backed and structured securities in an unrealized loss position were reviewed to determine whether other-than-temporary impairment should be recognized. For those securities in an unrealized loss position as of March 31, 2019, the Company has not made a decision to sell any such securities. The Company has evaluated its cash flow requirements and believes that its liquidity is adequate and it will not be required to sell these securities before recovery of their cost basis. As of March 31, 2019, the Company believes that it has the ability to hold these securities long enough to allow the cost basis of these securities to be recovered. Management's assessment of a decline in value includes, among other things: (i) the duration of time and the relative magnitude to which fair value of the investment has been below cost; (ii) the financial condition and near-term prospects of the issuer of the investment; (iii) extraordinary events, including negative news releases and rating agency downgrades, with respect to the issuer of the investment; and (iv) the Company's ability and intent to hold a security for a period of time sufficient to allow for any anticipated recovery. Unrealized losses are due to a combination of credit and interest rate factors. It is possible that the Company could recognize other-than-temporary impairments in the future on some of the securities held at March 31, 2019 if future events, information and the passage of time cause it to conclude that declines in value are other-than-temporary.

- E. Dollar Repurchase Agreements and/or Securities Lending Transactions
- (3) Collateral Received
b. Not applicable
- F. Repurchase Agreements Transactions Accounted for as Secured Borrowing
- Not applicable
- G. Reverse Repurchase Agreements Transactions Accounted for as Secured Borrowing
Repurchase Transactions – Cash Provider – Overview of Secured Borrowing Transactions
- Not applicable
- H. Repurchase Agreements Transactions Accounted for as a Sale
Repurchase Transaction – Cash Taker – Overview of Sale Transactions
- Not applicable
- I. Reverse Repurchase Agreements Transactions Accounted for as a Sale
Repurchase Transaction – Cash Provider – Overview of Sale Transactions
- Not applicable
- M. Working Capital Finance Investments
- (2) Aggregate Maturity Distribution on the Underlying Working Capital Finance Programs
- Not applicable
- (3) Any Events of Default or Working Capital Finance Investments
- Not applicable
- N. Offsetting and Netting of Assets and Liabilities
- Not applicable

Note 6 – Joint Ventures, Partnerships and Limited Liability Companies

No significant changes

Note 7 – Investment Income

No significant changes

Note 8 – Derivative Instruments

- H. Total Premium Costs for Contracts

Not applicable

Note 9 – Income Taxes

No significant changes

Note 10 – Information Concerning Parent, Subsidiaries, Affiliates and Other Related Parties

NOTES TO FINANCIAL STATEMENTS

No significant changes

Note 11 – Debt

B. FHLB (Federal Home Loan Bank) Agreements

Not applicable

Note 12 – Retirement Plans, Deferred Compensation, Postemployment Benefits and Compensated Absences and Other Postretirement Benefit Plans

A. Defined Benefit Plan

(4) Components of Net Periodic Benefit Cost

Not applicable

Note 13 – Capital and Surplus, Shareholder's Dividend Restrictions and Quasi-Reorganizations

No significant changes

Note 14 – Liabilities, Contingencies and Assessments

No significant changes

Note 15 – Leases

No significant changes

Note 16 – Information about Financial Instruments with Off-Balance Sheet Risk and Financial Instruments with Concentrations of Credit Risk

No significant changes

Note 17 – Sale, Transfer and Servicing of Financial Assets and Extinguishments of Liabilities

B. Transfer and Servicing of Financial Assets

(2) Servicing Assets and Servicing Liabilities

Not applicable

(4) Securitizations, Asset-Based Financing Arrangements and Similar Transfers Accounted for as Sales

(a) Not applicable

(b) Not applicable

C. Wash Sales

The Company had no wash sales.

Note 18 – Gain or Loss to the Reporting Entity from Uninsured Plans and the Portion of Partially Insured Plans

No significant changes

Note 19 – Direct Premium Written/Produced by Managing General Agents/Third Party Administrators

No significant changes

Note 20 – Fair Value Measurements

A. Fair Value Measurements

(1) Fair Value Measurements at Reporting Date

The Company has categorized its assets and liabilities that are measured at fair value into the three-level fair value hierarchy as reflected in the table below. The three-level hierarchy is based on the degree of subjectivity in the valuation method by which fair value was determined. The three levels are defined as follows:

Level 1

The Company's valuations are based on unadjusted quoted prices in active markets for identical, unrestricted assets. Since valuations are based on quoted prices that are readily and regularly available in an active market, valuation of these assets does not involve any meaningful degree of judgment. An active market is defined as a market where transactions for the financial instrument occur with sufficient frequency and volume to provide pricing information on an ongoing basis. For the Company, assets utilizing Level 1 inputs generally include common stocks, short-term money market funds and certain other invested assets, where valuations are based on quoted market prices.

Level 2

The Company's valuations are based on quoted markets prices where such markets are not deemed to be sufficiently "active". In such circumstances, additional valuation metrics are used, which involve direct or indirect observable market inputs. The Company's assets utilizing Level 2 inputs generally include short-term debt securities other than debt issued by the U.S. government. Third-party dealer quotes typically constitute a significant input in the determination of the fair value of these types of fixed income securities. In developing such quotes, dealers will use the term as of the security and market-based inputs. Terms of the security include coupon, maturity date, and any special provisions that may, for example, enable the investor, at their election, to redeem the security prior to its scheduled maturity date. Market-based inputs include the level of interest rates applicable to comparable securities in the market place and current credit rating(s) of the security.

Level 3

NOTES TO FINANCIAL STATEMENTS

The Company has no assets or liabilities measured at fair value in this category.

Assets and Liabilities Measured at Fair Value (in thousands):

Description for Each Type of Asset or Liability	Level 1	Level 2	Level 3	Net Asset Value (NAV)	Total
Assets at Fair Value					
Bonds	\$	\$	\$	\$	\$
Common stock	\$ 7,371	\$	\$	\$	\$ 7,371
Cash equivalents & short-term investments	\$	\$ 3,361	\$	\$	\$ 3,361
Total	\$ 7,371	\$ 3,361	\$	\$	\$ 10,732
Liabilities at Fair Value					
	\$	\$	\$	\$	\$
Total	\$	\$	\$	\$	\$

- (2) Fair Value Measurements in (Level 3) of the Fair Value Hierarchy
 The Company has no assets or liabilities measured at fair value in the Level 3 category.

Description	Beginning Balance	Transfers Into Level 3	Transfers Out of Level 3	Total Gains and (Losses) Included in Net Income	Total Gains and (Losses) Included in Surplus	Purchases	Issuances	Sales	Settlements	Ending Balance as of Current Period
a. Assets										
	\$	\$	\$	\$	\$	\$	\$	\$	\$	\$
Total	\$	\$	\$	\$	\$	\$	\$	\$	\$	\$
b. Liabilities										
	\$	\$	\$	\$	\$	\$	\$	\$	\$	\$
Total	\$	\$	\$	\$	\$	\$	\$	\$	\$	\$

- (3) Policies when Transfers Between Levels are Recognized
 At the end of each reporting period, the Company evaluates whether or not any event has occurred or circumstances have changed that would cause an instrument to be transferred into or out of Level 3. During the current year, no transfers into or out of Level 3 were required.
- (4) Description of Valuation Techniques and Inputs Used in Fair Value Measurement
 See footnote 20(A) (1) above.
- (5) Fair Value Disclosures
 Not applicable

- B. Fair Value Reporting under SSAP 100 and Other Accounting Pronouncements
 Not applicable
- C. Fair Value Level

The tables below (in thousands) reflects the fair values and admitted values of all admitted assets and liabilities that are financial instruments excluding those accounted for under equity method (subsidiaries, joint ventures and ventures). The fair values are also categorized into the three-level fair value hierarchy as described above in Note 20A.

Type of Financial Instrument	Aggregate Fair Value	Admitted Assets	(Level 1)	(Level 2)	(Level 3)	Net Asset Value (NAV)	Not Practicable (Carrying Value)
Bonds	\$ 105,398	\$ 104,062	\$	\$ 94,337	\$ 11,061	\$	\$
Common stock	\$ 7,371	\$ 7,371	\$ 7,371	\$	\$	\$	\$
Cash, cash equivalents & short-term investments	\$ 3,361	\$ 3,361	\$	\$ 3,361	\$	\$	\$

- D. Not Practicable to Estimate Fair Value
 Not applicable

Type of Class or Financial Instrument	Carrying Value	Effective Interest Rate	Maturity Date	Explanation
	\$			

- E. NAV Practical Expedient Investments
 Not applicable

Note 21 – Other Items

No significant changes

Note 22 – Events Subsequent

Subsequent events have been considered through May 14, 2019 for these statutory financial statements which are to be issued on May 14, 2019. There were no events occurring subsequent to the end of the quarter that merited recognition or disclosure in these statements.

Note 23 – Reinsurance

No significant changes

Note 24 – Retrospectively Rated Contracts and Contracts Subject to Redetermination

NOTES TO FINANCIAL STATEMENTS

F. Risk Sharing Provisions of the Affordable Care Act

Not applicable

Note 25 – Change in Incurred Losses and Loss Adjustment Expenses

A. Change in Incurred Losses and Loss Adjustment Expenses

Activity in the liability for unpaid losses and loss adjustment expenses for the periods ending March 31, 2019 and December 31, 2018 is summarized as follows (in thousands):

	3/31/2019	12/31/2018
Balance at January 1, net of reinsurance recoverables of \$242,137 and \$201,849, respectively	\$ 45,281	\$ 39,645
Incurred loss and loss adjustment expenses related to:		
Current year	6,343	24,615
Prior years	435	(662)
Total incurred	6,778	23,953
Paid loss and loss adjustment expenses related to:		
Current year	(514)	(4,750)
Prior years	(4,148)	(13,567)
Total paid	(4,662)	(18,317)
Balance at period ending net of reinsurance recoverables of \$256,013 and \$242,137, respectively	\$ 47,397	\$ 45,281

The estimated cost of loss and loss adjustment expenses attributable to insured events of prior years has increased by approximately \$0.4 million as a result of re-estimation of losses and loss adjustment expenses principally through the pooling of its business with Capitol Indemnity Corporation and Plate River Insurance Company and the group's overall results primarily in the 2010 accident year. This increase is generally the result of ongoing analysis of recent loss development trends. Original estimates are increased or decreased as additional information becomes known regarding individual claims. There was no development on retrospectively-rated policies and, hence, no material impact on surplus.

B. Information about Significant Changes in Methodologies and Assumptions

Not applicable

Note 26 – Intercompany Pooling Arrangements

No significant changes

Note 27 – Structured Settlements

No significant changes

Note 28 – Health Care Receivables

No significant changes

Note 29 – Participating Policies

No significant changes

Note 30 – Premium Deficiency Reserves

No significant changes

Note 31 – High Deductibles

No significant changes

Note 32 – Discounting of Liabilities for Unpaid Losses or Unpaid Loss Adjustment Expenses

No significant changes

Note 33 – Asbestos/Environmental Reserves

No significant changes

Note 34 – Subscriber Savings Accounts

No significant changes

Note 35 – Multiple Peril Crop Insurance

No significant changes

Note 36 – Financial Guaranty Insurance

B. Schedule of Insured Financial Obligations at the End of the Period:

Not applicable

GENERAL INTERROGATORIES

PART 1 - COMMON INTERROGATORIES

GENERAL

- 1.1 Did the reporting entity experience any material transactions requiring the filing of Disclosure of Material Transactions with the State of Domicile, as required by the Model Act? Yes [] No [X]
- 1.2 If yes, has the report been filed with the domiciliary state? Yes [] No []
- 2.1 Has any change been made during the year of this statement in the charter, by-laws, articles of incorporation, or deed of settlement of the reporting entity? Yes [] No [X]
- 2.2 If yes, date of change: _____
- 3.1 Is the reporting entity a member of an Insurance Holding Company System consisting of two or more affiliated persons, one or more of which is an insurer? If yes, complete Schedule Y, Parts 1 and 1A. Yes [X] No []
- 3.2 Have there been any substantial changes in the organizational chart since the prior quarter end? Yes [] No [X]
- 3.3 If the response to 3.2 is yes, provide a brief description of those changes.

- 3.4 Is the reporting entity publicly traded or a member of a publicly traded group? Yes [X] No []
- 3.5 If the response to 3.4 is yes, provide the CIK (Central Index Key) code issued by the SEC for the entity/group. 775368
- 4.1 Has the reporting entity been a party to a merger or consolidation during the period covered by this statement? If yes, complete and file the merger history data file with the NAIC for the annual filing corresponding to this period. Yes [] No [X]
- 4.2 If yes, provide name of entity, NAIC Company Code, and state of domicile (use two letter state abbreviation) for any entity that has ceased to exist as a result of the merger or consolidation.

1 Name of Entity	2 NAIC Company Code	3 State of Domicile

5. If the reporting entity is subject to a management agreement, including third-party administrator(s), managing general agent(s), attorney-in-fact, or similar agreement, have there been any significant changes regarding the terms of the agreement or principals involved? If yes, attach an explanation. Yes [] No [X] N/A []

- 6.1 State as of what date the latest financial examination of the reporting entity was made or is being made. 12/31/2014
- 6.2 State the as of date that the latest financial examination report became available from either the state of domicile or the reporting entity. This date should be the date of the examined balance sheet and not the date the report was completed or released. 12/31/2014
- 6.3 State as of what date the latest financial examination report became available to other states or the public from either the state of domicile or the reporting entity. This is the release date or completion date of the examination report and not the date of the examination (balance sheet date). 06/30/2016

6.4 By what department or departments?

Wisconsin Office of the Commissioner of Insurance

- 6.5 Have all financial statement adjustments within the latest financial examination report been accounted for in a subsequent financial statement filed with Departments? Yes [X] No [] N/A []
- 6.6 Have all of the recommendations within the latest financial examination report been complied with? Yes [X] No [] N/A []
- 7.1 Has this reporting entity had any Certificates of Authority, licenses or registrations (including corporate registration, if applicable) suspended or revoked by any governmental entity during the reporting period? Yes [] No [X]
- 7.2 If yes, give full information:

- 8.1 Is the company a subsidiary of a bank holding company regulated with the Federal Reserve Board? Yes [] No [X]
- 8.2 If response to 8.1 is yes, please identify the name of the bank holding company.

- 8.3 Is the company affiliated with one or more banks, thrifts or securities firms? Yes [] No [X]

8.4 If the response to 8.3 is yes, please provide below the names and location (city and state of the main office) of any affiliates regulated by a federal regulatory services agency [i.e. the Federal Reserve Board (FRB), the Office of the Comptroller of the Currency (OCC), the Federal Deposit Insurance Corporation (FDIC) and the Securities Exchange Commission (SEC)] and identify the affiliate's primary federal regulator.

1 Affiliate Name	2 Location (City, State)	3 FRB	4 OCC	5 FDIC	6 SEC

- 9.1 Are the senior officers (principal executive officer, principal financial officer, principal accounting officer or controller, or persons performing similar functions) of the reporting entity subject to a code of ethics, which includes the following standards? Yes [X] No []
- (a) Honest and ethical conduct, including the ethical handling of actual or apparent conflicts of interest between personal and professional relationships;
- (b) Full, fair, accurate, timely and understandable disclosure in the periodic reports required to be filed by the reporting entity;
- (c) Compliance with applicable governmental laws, rules and regulations;
- (d) The prompt internal reporting of violations to an appropriate person or persons identified in the code; and
- (e) Accountability for adherence to the code.
- 9.11 If the response to 9.1 is No, please explain:
- 9.2 Has the code of ethics for senior managers been amended? Yes [] No [X]
- 9.21 If the response to 9.2 is Yes, provide information related to amendment(s).
- 9.3 Have any provisions of the code of ethics been waived for any of the specified officers? Yes [] No [X]
- 9.31 If the response to 9.3 is Yes, provide the nature of any waiver(s).

GENERAL INTERROGATORIES

PART 1 - COMMON INTERROGATORIES

FINANCIAL

- 10.1 Does the reporting entity report any amounts due from parent, subsidiaries or affiliates on Page 2 of this statement? Yes No
- 10.2 If yes, indicate any amounts receivable from parent included in the Page 2 amount: \$ 8,249,534

INVESTMENT

- 11.1 Were any of the stocks, bonds, or other assets of the reporting entity loaned, placed under option agreement, or otherwise made available for use by another person? (Exclude securities lending agreements.) Yes No
- 11.2 If yes, give full and complete information relating thereto:

12. Amount of real estate and mortgages held in other invested assets in Schedule BA: \$ 0
13. Amount of real estate and mortgages held in short-term investments: \$ 0
- 14.1 Does the reporting entity have any investments in parent, subsidiaries and affiliates? Yes No

14.2 If yes, please complete the following:

	1 Prior Year End Book/Adjusted Carrying Value	2 Current Quarter Book/Adjusted Carrying Value
14.21 Bonds	\$ 0	\$ 0
14.22 Preferred Stock	0	0
14.23 Common Stock	0	0
14.24 Short-Term Investments	0	0
14.25 Mortgage Loans on Real Estate	0	0
14.26 All Other	0	0
14.27 Total Investment in Parent, Subsidiaries and Affiliates (Subtotal Lines 14.21 to 14.26)	\$ 0	\$ 0
14.28 Total Investment in Parent included in Lines 14.21 to 14.26 above	\$ 0	\$ 0

- 15.1 Has the reporting entity entered into any hedging transactions reported on Schedule DB? Yes No
- 15.2 If yes, has a comprehensive description of the hedging program been made available to the domiciliary state? Yes No
If no, attach a description with this statement.

16. For the reporting entity's security lending program, state the amount of the following as of current statement date:

- 16.1 Total fair value of reinvested collateral assets reported on Schedule DL, Parts 1 and 2: \$ 0
- 16.2 Total book adjusted/carrying value of reinvested collateral assets reported on Schedule DL, Parts 1 and 2: \$ 0
- 16.3 Total payable for securities lending reported on the liability page: \$ 0

17. Excluding items in Schedule E-Part 3-Special Deposits, real estate, mortgage loans and investments held physically in the reporting entity's offices, vaults or safety deposit boxes, were all stocks, bonds and other securities, owned throughout the current year held pursuant to a custodial agreement with a qualified bank or trust company in accordance with Section 1, III - General Examination Considerations, F. Outsourcing of Critical Functions, Custodial or Safeguarding Agreements of the NAIC *Financial Condition Examiners Handbook*? Yes No

17.1 For all agreements that comply with the requirements of the NAIC *Financial Condition Examiners Handbook*, complete the following:

1 Name of Custodian(s)	2 Custodian Address
Bank of New York	One Wall Street, New York, NY 10286

17.2 For all agreements that do not comply with the requirements of the NAIC *Financial Condition Examiners Handbook*, provide the name, location and a complete explanation:

1 Name(s)	2 Location(s)	3 Complete Explanation(s)

- 17.3 Have there been any changes, including name changes, in the custodian(s) identified in 17.1 during the current quarter? Yes No

17.4 If yes, give full and complete information relating thereto:

1 Old Custodian	2 New Custodian	3 Date of Change	4 Reason

17.5 Investment management – Identify all investment advisors, investment managers, broker/dealers, including individuals that have the authority to make investment decisions on behalf of the reporting entity. For assets that are managed internally by employees of the reporting entity, note as such "...that have access to the investment accounts", "handle securities".

1 Name of Firm or Individual	2 Affiliation
Roundwood Asset Management, LLC	A
New England Asset Management	U

17.5097 For those firms/individuals listed in the table for Question 17.5, do any firms/individuals unaffiliated with the reporting entity (i.e., designated with a "U") manage more than 10% of the reporting entity's assets? Yes No

17.5098 For firms/individuals unaffiliated with the reporting entity (i.e., designated with a "U") listed in the table for Question 17.5, does the total assets under management aggregate to more than 50% of the reporting entity's assets? Yes No

17.6 For those firms or individuals listed in the table for 17.5 with an affiliation code of "A" (affiliated) or "U" (unaffiliated), provide the information for the table below.

1 Central Registration Depository Number	2 Name of Firm or Individual	3 Legal Entity Identifier (LEI)	4 Registered With	5 Investment Management Agreement (IMA) Filed
	Roundwood Asset Management, LLC			
105900	New England Asset Management	KUR85EPS4GQFZTFC130	SEC	NO

- 18.1 Have all the filing requirements of the *Purposes and Procedures Manual of the NAIC Investment Analysis Office* been followed? Yes No

18.2 If no, list exceptions:

GENERAL INTERROGATORIES

PART 1 - COMMON INTERROGATORIES

19. By self-designating 5GI securities, the reporting entity is certifying the following elements for each self-designated 5GI security:
- a. Documentation necessary to permit a full credit analysis of the security does not exist or an NAIC CRP credit rating for an FE or PL security is not available.
 - b. Issuer or obligor is current on all contracted interest and principal payments.
 - c. The insurer has an actual expectation of ultimate payment of all contracted interest and principal.
- Has the reporting entity self-designated 5GI securities? Yes [] No [X]
20. By self-designating PLGI securities, the reporting entity is certifying the following elements for each self-designated PLGI security:
- a. The security was purchased prior to January 1, 2018.
 - b. The reporting entity is holding capital commensurate with the NAIC Designation reported for the security.
 - c. The NAIC Designation was derived from the credit rating assigned by an NAIC CRP in its legal capacity as a NRSRO which is shown on a current private letter rating held by the insurer and available for examination by state insurance regulators.
 - d. The reporting entity is not permitted to share this credit rating of the PL security with the SVO.
- Has the reporting entity self-designated PLGI securities? Yes [] No [X]

GENERAL INTERROGATORIES (continued)

PART 2 – PROPERTY & CASUALTY INTERROGATORIES

1. If the reporting entity is a member of a pooling arrangement, did the agreement or the reporting entity's participation change? Yes [] No [X] N/A []
 If yes, attach an explanation.

2. Has the reporting entity reinsured any risk with any other reporting entity and agreed to release such entity from liability, in whole or in part, from any loss that may occur on the risk, or portion thereof, reinsured? Yes [] No [X]
 If yes, attach an explanation.

3.1 Have any of the reporting entity's primary reinsurance contracts been canceled? Yes [] No [X]

3.2 If yes, give full and complete information thereto:

4.1 Are any of the liabilities for unpaid losses and loss adjustment expenses other than certain workers' compensation tabular reserves (see *Annual Statement Instructions* pertaining to disclosure of discounting for definition of "tabular reserves,") discounted at a rate of interest greater than zero? Yes [] No [X]

4.2 If yes, complete the following schedule:

1 Line of Business	2 Maximum Interest	3 Disc. Rate	Total Discount				Discount Taken During Period			
			4 Unpaid Losses	5 Unpaid LAE	6 IBNR	7 Total	8 Unpaid Losses	9 Unpaid LAE	10 IBNR	11 Total
	0.000	0.000	0	0	0	0	0	0	0	0
Total	XXX	XXX	0	0	0	0	0	0	0	0

5. Operating Percentages:

- 5.1 A&H loss percent 34.200%
- 5.2 A&H cost containment percent 3.800%
- 5.3 A&H expense percent excluding cost containment expenses 4.500%
- 6.1 Do you act as a custodian for health savings accounts? Yes [] No [X]
- 6.2 If yes, please provide the amount of custodial funds held as of the reporting date. \$ 0
- 6.3 Do you act as an administrator for health savings accounts? Yes [] No [X]
- 6.4 If yes, please provide the amount of funds administered as of the reporting date. \$ 0
- 7. Is the reporting entity licensed or chartered, registered, qualified, eligible or writing business in at least two states? Yes [X] No []
- 7.1 If no, does the reporting entity assume reinsurance business that covers risks residing in at least one state other than the state of domicile of the reporting entity? Yes [] No []

SCHEDULE F - CEDED REINSURANCE

Showing All New Reinsurers - Current Year to Date

1 NAC Company Code	2 ID Number	3 Name of Reinsurer	4 Domiciliary Jurisdiction	5 Type of Reinsurer	6 Certified Reinsurer Rating (1 through 6)	7 Effective Date of Certified Reinsurer Rating
-----------------------------	----------------	------------------------	----------------------------------	---------------------------	---	--

NONE

SCHEDULE T - EXHIBIT OF PREMIUMS WRITTEN

Current Year to Date - Allocated by States and Territories

States, Etc.	1 Active Status (a)	Direct Premiums Written		Direct Losses Paid (Deducting Salvage)		Direct Losses Unpaid	
		2 Current Year to Date	3 Prior Year to Date	4 Current Year to Date	5 Prior Year to Date	6 Current Year to Date	7 Prior Year to Date
1. Alabama.....AL	E	435,268	184,381	170,851	(4,000)	1,781,806	785,743
2. Alaska.....AK	E	127,482	106,438			351,191	288,450
3. Arizona.....AZ	E	1,685,187	1,169,749	103,353	60,014	5,236,911	4,332,326
4. Arkansas.....AR	E	229,979	215,180	113,062	13,647	733,764	583,074
5. California.....CA	E	8,153,910	7,578,616	4,582,089	1,287,967	31,964,919	25,764,221
6. Colorado.....CO	E	789,555	771,670	14,980	66,319	2,314,310	2,256,406
7. Connecticut.....CT	E	653,189	588,005	124,043	5,199	2,198,271	2,136,972
8. Delaware.....DE	E	64,030	155,120	(2,143)		176,382	415,081
9. District of Columbia.....DC	E	115,232	215,048		3,854	317,479	589,476
10. Florida.....FL	E	7,762,978	8,902,231	2,368,601	2,493,920	31,783,389	31,448,122
11. Georgia.....GA	E	1,309,789	892,792	195,874	111,083	6,601,722	4,284,160
12. Hawaii.....HI	E	131,143	77,388			393,275	238,886
13. Idaho.....ID	E	223,140	151,337	9,407	24,691	664,970	445,245
14. Illinois.....IL	E	1,414,921	1,176,546	369,419	228,156	4,347,984	3,474,365
15. Indiana.....IN	E	667,715	606,780	718,066	97,108	2,086,827	2,023,626
16. Iowa.....IA	E	230,248	127,746	50,093	4,326	688,294	348,860
17. Kansas.....KS	E	468,471	329,491	8,139	37,644	1,438,256	891,269
18. Kentucky.....KY	E	339,859	231,871	207,948	230,000	3,139,313	3,123,300
19. Louisiana.....LA	E	1,550,556	335,031	26,337		4,659,434	1,116,012
20. Maine.....ME	E	124,019	130,841	255,298	7,160	873,151	480,745
21. Maryland.....MD	E	672,526	576,105	610,998	7,037	2,194,065	1,771,512
22. Massachusetts.....MA	E	1,577,369	1,265,861	317,928	179,906	5,854,577	4,191,502
23. Michigan.....MI	E	910,106	717,366	42,090	146,202	2,708,006	2,445,020
24. Minnesota.....MN	E	669,556	539,879	81,709	450	1,934,535	1,579,720
25. Mississippi.....MS	E	289,482	356,916	2,750		1,194,723	1,285,697
26. Missouri.....MO	E	262,409	453,582	51,458	36,240	1,084,894	1,679,066
27. Montana.....MT	E	325,701	232,336	19,238	33,863	963,784	1,520,705
28. Nebraska.....NE	E	155,920	123,743		134,190	488,148	363,913
29. Nevada.....NV	E	325,630	362,937	680,447	330,308	1,308,056	1,125,237
30. New Hampshire.....NH	E	201,366	146,381	607	13,186	707,415	445,677
31. New Jersey.....NJ	E	2,286,375	2,032,708	211,544	314,228	11,057,303	7,461,324
32. New Mexico.....NM	E	271,407	216,123		47,756	1,634,224	1,270,401
33. New York.....NY	E	3,913,015	3,161,595	2,221,302	681,839	16,891,034	13,732,993
34. North Carolina.....NC	E	643,941	488,695	(374)	(2,858)	3,813,688	1,465,624
35. North Dakota.....ND	E	160,541	104,752	(200)	37,874	502,263	348,801
36. Ohio.....OH	E	1,156,764	708,753	110,050	96,001	4,364,187	2,900,610
37. Oklahoma.....OK	E	808,036	1,015,567	115,453	352,980	4,225,653	5,924,914
38. Oregon.....OR	E	513,080	585,103	74,151	13,387	2,025,033	2,021,563
39. Pennsylvania.....PA	E	1,665,659	1,582,762	155,113	28,658	6,349,474	5,996,167
40. Rhode Island.....RI	E	230,924	190,479		(1,500)	941,156	655,741
41. South Carolina.....SC	E	660,345	443,891	11,621	15,523	2,274,742	1,587,608
42. South Dakota.....SD	E	130,800	115,140	1,850	258	360,332	306,623
43. Tennessee.....TN	E	584,946	390,080	40,650	227,243	2,142,959	1,557,184
44. Texas.....TX	E	3,817,886	4,511,047	922,407	1,575,327	18,634,055	19,777,799
45. Utah.....UT	E	391,776	135,746	656	(4,210)	1,432,635	507,017
46. Vermont.....VT	E	212,084	223,208	3,345		590,947	594,461
47. Virginia.....VA	E	1,449,895	844,127	504,242	15,843	4,385,276	2,512,318
48. Washington.....WA	E	1,991,007	1,041,103	237,681	802,239	6,113,945	3,916,319
49. West Virginia.....WV	E	380,934	293,674	3,500	6,271	1,450,158	919,444
50. Wisconsin.....WI	D	338,099	118,841	5,653	(82,500)	1,214,836	671,929
51. Wyoming.....WY	E	76,648	69,290		8,346	399,152	184,518
52. American Samoa.....AS	N						
53. Guam.....GU	N						
54. Puerto Rico.....PR	N						
55. US Virgin Islands.....VI	N						
56. Northern Mariana Islands.....MP	N						
57. Canada.....CAN	N						
58. Aggregate Other Alien.....OT	XXX	0	0	0	0	0	0
59. Totals.....	XXX	53,550,899	46,983,831	15,741,286	9,681,175	211,102,893	175,843,536

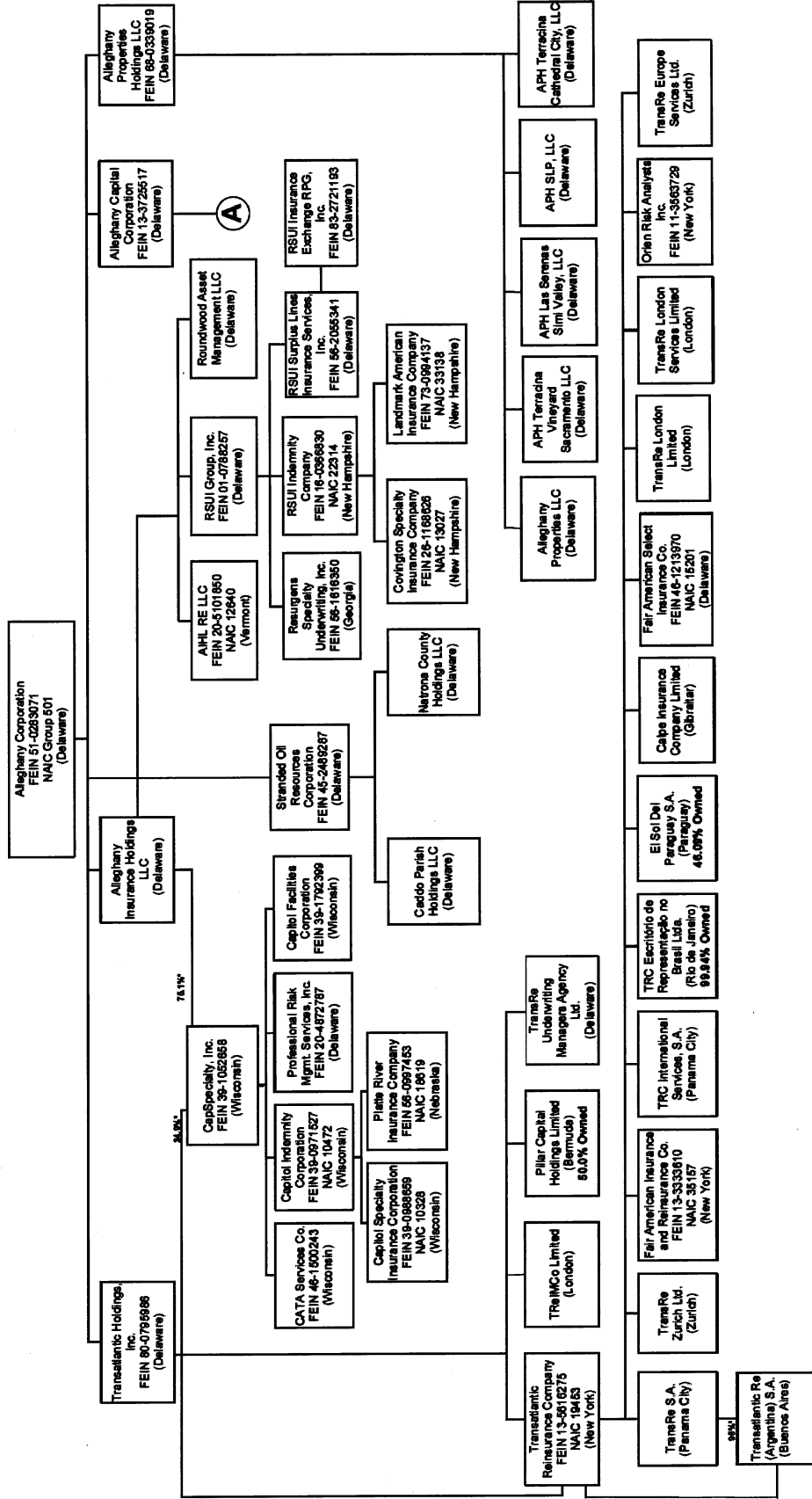
DETAILS OF WRITE-INS

58001.....	XXX						
58002.....	XXX						
58003.....	XXX						
58998. Summary of remaining write-ins for Line 58 from overflow page.....	XXX	0	0	0	0	0	0
58999. Totals (Lines 58001 thru 58003+ Line 58998) (Line 58 above).....	XXX	0	0	0	0	0	0

(a) Active Status Count

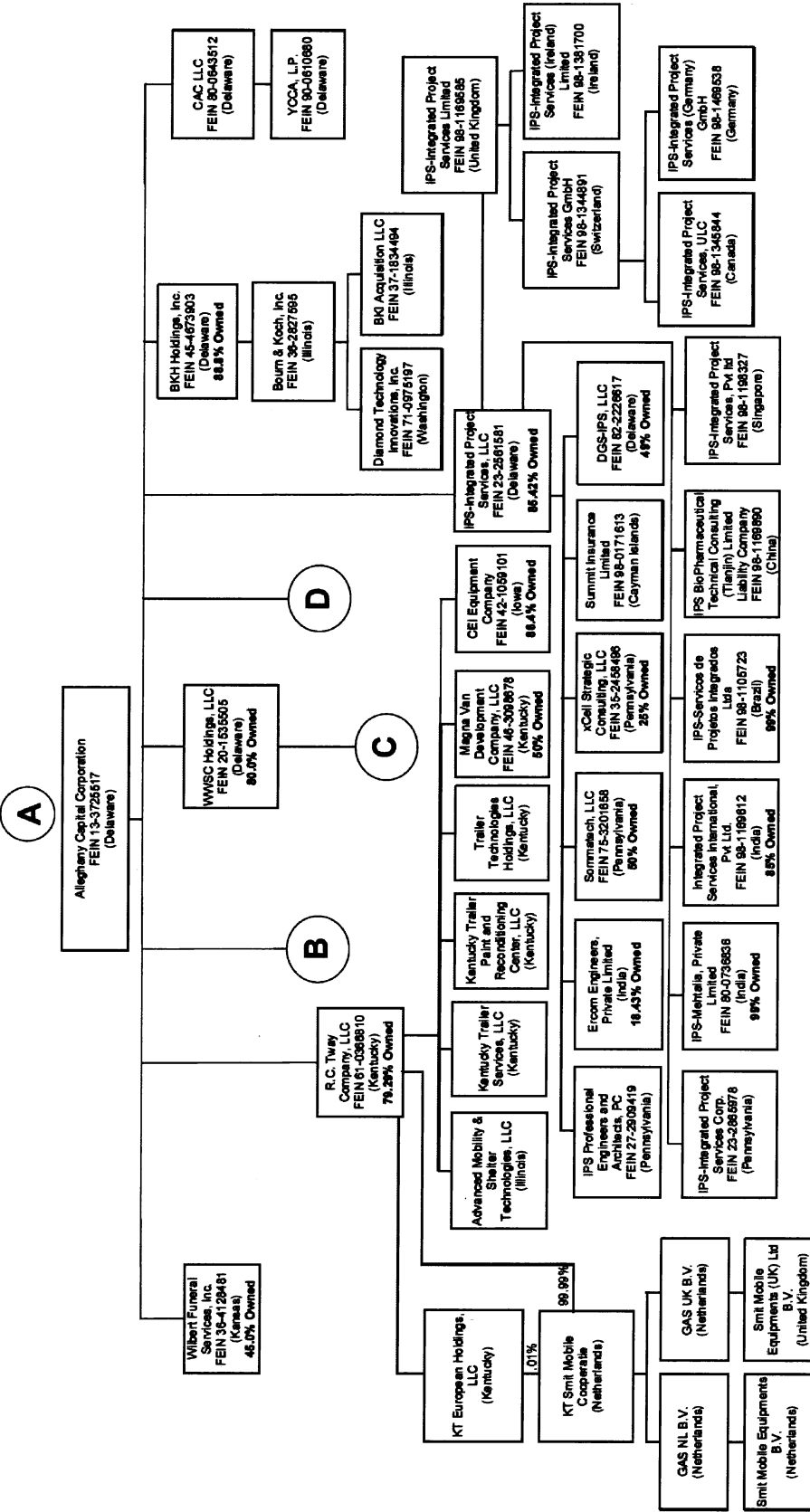
L - Licensed or Chartered - Licensed insurance carrier or domiciled RRG.....	0	R - Registered - Non-domiciled RRG.....	0
E - Eligible - Reporting entities eligible or approved to write surplus lines in the state (other than their state of domicile - See DSL).....	50	Q - Qualified - Qualified or accredited reinsurer.....	0
D - Domestic Surplus Lines Insurer (DSL) - Reporting entities authorized to write surplus lines in the state of domicile.....	1	N - None of the above - Not allowed to write business in the state.....	6

SCHEDULE Y – INFORMATION CONCERNING ACTIVITIES OF INSURER MEMBERS OF A HOLDING COMPANY GROUP
PART 1 – ORGANIZATIONAL CHART



NOTE: The organizational chart does not include inactive subsidiaries.

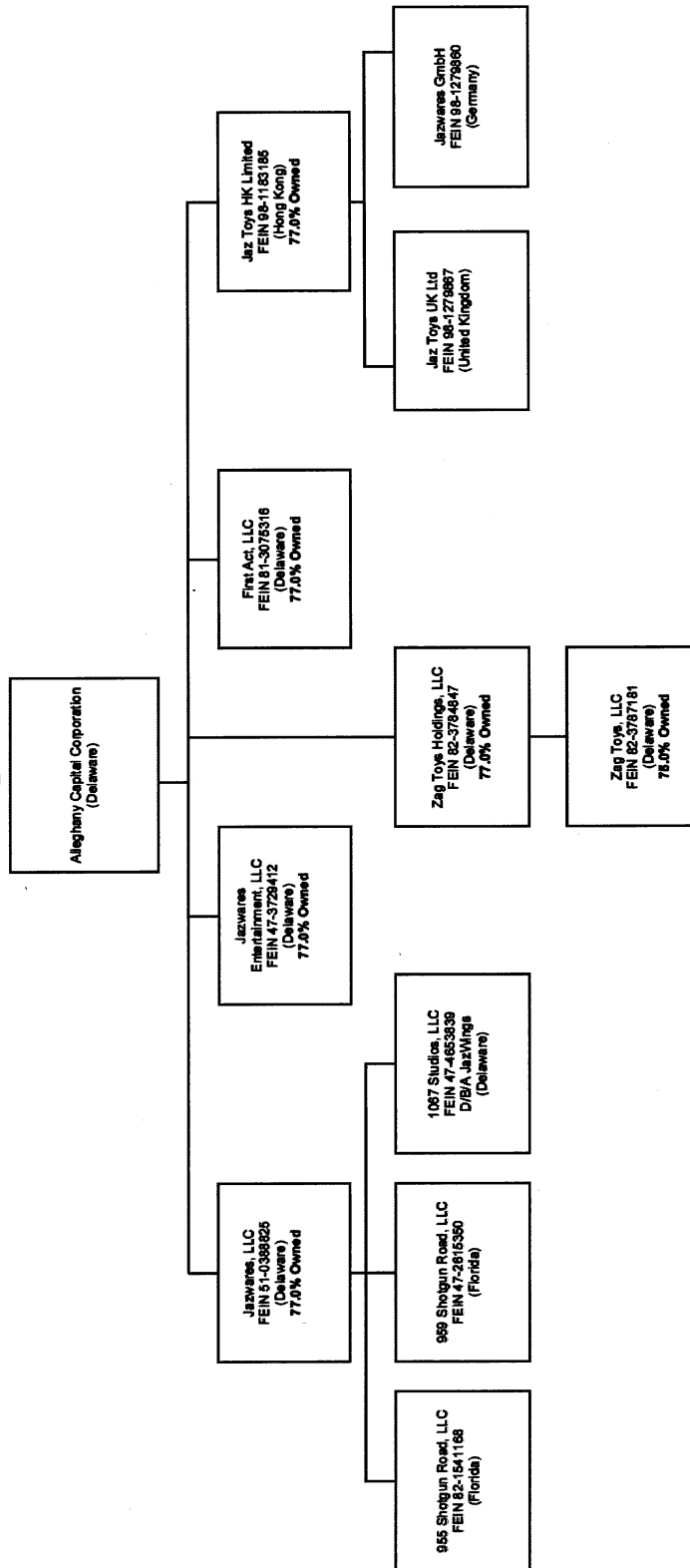
**SCHEDULE Y – INFORMATION CONCERNING ACTIVITIES OF INSURER MEMBERS OF A HOLDING COMPANY GROUP
PART 1 – ORGANIZATIONAL CHART**



NOTE: The organizational chart does not include inactive subsidiaries.

Statement for March 31, 2019 of the **Capitol Specialty Insurance Corporation**
SCHEDULE Y – INFORMATION CONCERNING ACTIVITIES OF INSURER MEMBERS OF A HOLDING COMPANY GROUP
PART 1 – ORGANIZATIONAL CHART

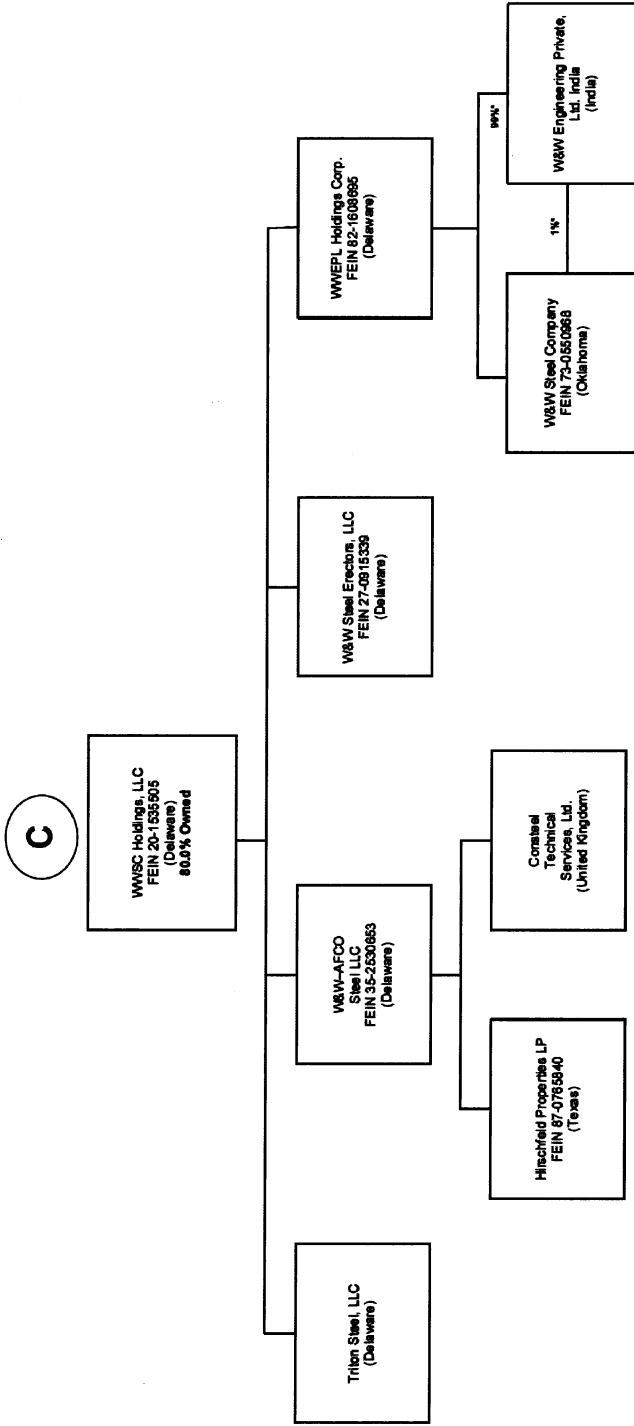
B



Q11.2

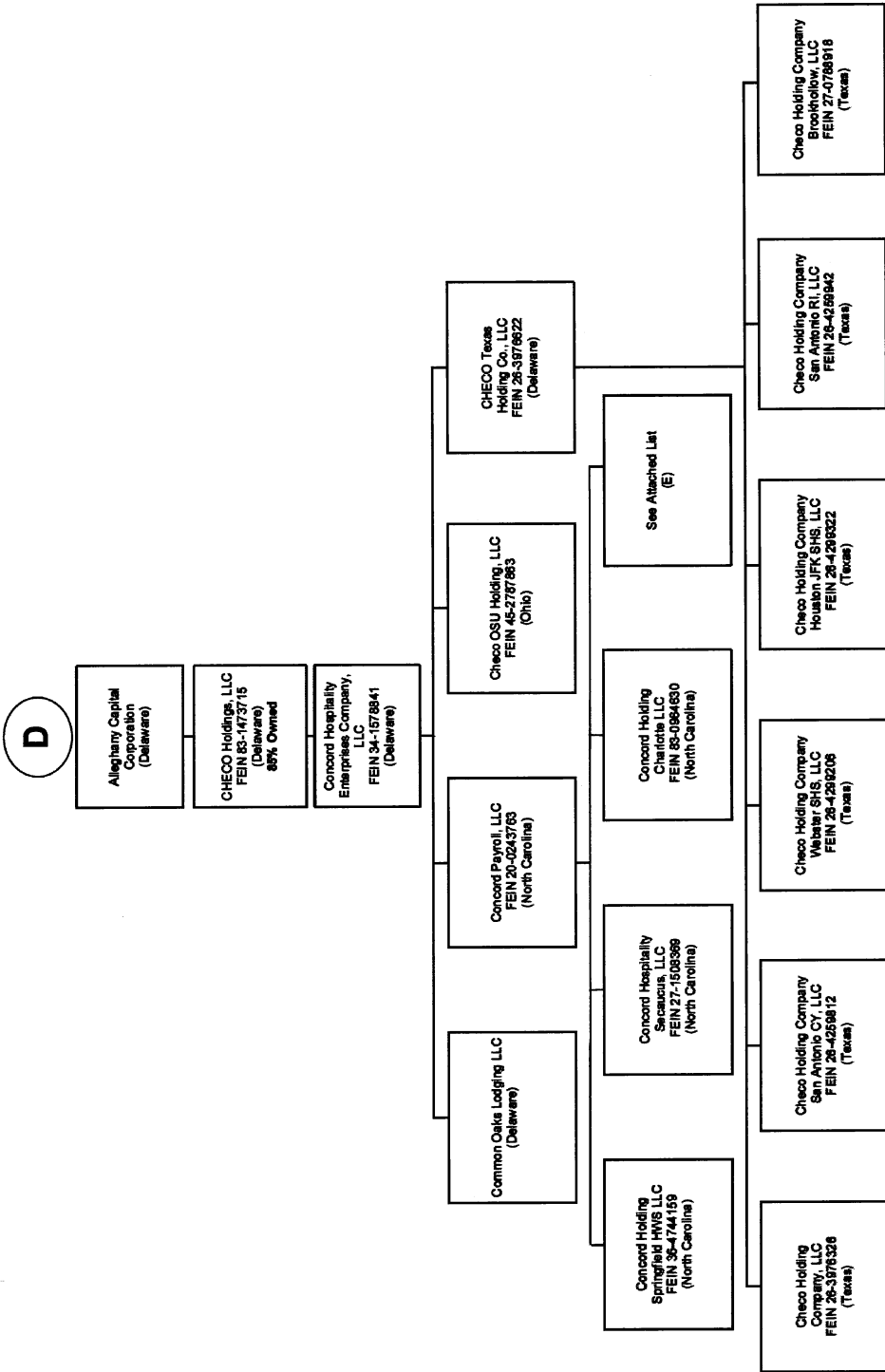
NOTE: The organizational chart does not include inactive subsidiaries.

SCHEDULE Y – INFORMATION CONCERNING ACTIVITIES OF INSURER MEMBERS OF A HOLDING COMPANY GROUP
PART 1 – ORGANIZATIONAL CHART



NOTE: The organizational chart does not include inactive subsidiaries.

**SCHEDULE Y – INFORMATION CONCERNING ACTIVITIES OF INSURER MEMBERS OF A HOLDING COMPANY GROUP
PART 1 – ORGANIZATIONAL CHART**



NOTE: The organizational chart does not include inactive subsidiaries.

SCHEDULE Y – INFORMATION CONCERNING ACTIVITIES OF INSURER MEMBERS OF A HOLDING COMPANY GROUP
PART 1 – ORGANIZATIONAL CHART
(E)

Entity Name	State	Entity Number
Concord Payroll - Brighton Cy II LLC	NC	82-1594808
Concord Payroll - Ch Philly, LLC	NC	81-4520701
Concord Payroll - Dhp, LLC	NC	47-5318579
Concord Payroll - Gainesville, LLC	NC	81-5069285
Concord Payroll - Grand Rapids, LLC	NC	47-5118897
Concord Payroll - Hk Raleigh, LLC	NC	47-5640996
Concord Payroll - Hl Airport, LLC	NC	81-1852318
Concord Payroll - Hl Universal, LLC	NC	81-1853129
Concord Payroll - Hpv, LLC	NC	47-5340347
Concord Payroll - Late Nona, LLC	NC	47-2703377
Concord Payroll - Lawwood, LLC	NC	47-4753820
Concord Payroll - Lenoing Cy, LLC	NC	80-0962007
Concord Payroll - Middtown, LI, LLC	NC	47-4453535
Concord Payroll - Novi Ren, LLC	NC	80-0960179
Concord Payroll - NY 28th, LLC	NC	37-1714781
Concord Payroll - Port Washington, LLC	NC	47-4453359
Concord Payroll - Savannah, LI, LLC	NC	81-2524641
Concord Payroll - TBDHotel 36, LLC	NC	38-3890860
Concord Payroll - TBDHotel 39, LLC	NC	37-1711782
Concord Payroll - TBDHotel 40, LLC	NC	35-2468174
Concord Payroll - TBDHotel 42, LLC	NC	37-1711782
Concord Payroll - TBDHotel 43, LLC	NC	37-1711788
Concord Payroll - TBDHotel XIX, LLC	NC	27-2807806
Concord Payroll - Am A, LLC	NC	82-1839461
Concord Payroll - Am E, LLC	NC	82-1839505
Concord Payroll - Cynth, LLC	NC	82-0785304
Concord Payroll - EB, LLC	NC	27-0717801
Concord Payroll - Edina, LLC	NC	82-5451785
Concord Payroll - Jacksonville, LLC	FL	82-5390828
Concord Payroll - LV, LLC	NC	82-1994827
Concord Payroll - Moon, LLC	NC	38-3600211
Concord Payroll - Nyc 46th, LLC	NC	81-3794866
Concord Payroll - RJ, LLC	NC	27-0717647
Concord Payroll - SHS Airport Pittsburgh PA, LLC	NC	27-1048128
Concord Payroll - Wharf One, LLC	NC	81-4110692
Concord Payroll - Wharf Two, LLC	NC	82-0830900
Concord Payroll - Arlington, LLC	NC	35-2485468
Common Oaks Lodging, LLC	DE	SM, LLC
CP Jelma Creek, LLC	NC	83-382890
CP HIX Idine, LLC	NC	83-3724893
CP TP Idine, LLC	NC	83-3715074
Concord Payroll - Charlotte, Yorkmont, LLC	NC	38-4770889
Concord Payroll - Cleveland 9th, LLC	NC	30-0808186
Concord Payroll - Columbia Orientaly, LLC	NC	38-4779256
Concord Payroll - Cumberland, LLC	NC	37-1746579
Concord Payroll - Dayton, LLC	NC	38-4778085
Concord Payroll - Glen Mills, LLC	NC	81-2838486
Concord Payroll - Greensburg CY, LLC	NC	38-3923605
Concord Payroll - Houston, JFK, LLC	NC	36-4777947
Concord Payroll - Neville, LLC	NC	81-1730401
Concord Payroll - Raleigh, Ren, LLC	NC	38-3923240
Concord Payroll - Reading, LLC	NC	37-1746854
Concord Payroll - Roanoke, LLC	NC	37-1730018
Concord Payroll - Settlers CY, LLC	NC	30-0809750
Concord Payroll - South Beach, LLC	NC	36-4789541
Concord Payroll - TBDHotel 28, LLC	NC	27-5283340
Concord Payroll - TBDHotel 30, LLC	NC	27-4545280
Concord Payroll - TBDHotel 31, LLC	NC	27-4545288
Concord Payroll - TBDHotel 32, LLC	NC	27-4545318
Concord Payroll - TBDHotel 34, LLC	NC	27-4546478
Concord Payroll - Washington CY, LLC	NC	32-0433373
Concord Payroll - Wakegram, LLC	NC	38-4778717
CP Atlanta Midtown, LLC	NC	82-3369805
CP Battlecreek, LLC	NC	85-1818189
CP Beaufort, LLC	NC	82-3968707
CP Broomfield, LLC	NC	82-4019482
CP Edikon, LI, LLC	NC	81-2728220
CP Houston CB, LLC	TX	85-2329429
CP Jersey City LI, LLC	NC	81-1870748
CP Loveland, LLC	CO	85-2528210
CP Maiden Lane, LLC	WI	82-2859462
CP Milwaukee CB, LLC	WI	82-2784272
CP Newark, LLC	NC	82-3985105
CP Nulu, LLC	NC	82-2784272
CP Secaucus, LLC	NC	85-1131587
CP Surfside, LLC	NC	85-2442287
CP Tuckelton, LLC	NY	83-2298107
CP Waburn, LLC	NC	83-3758917
CP Georgia LN, LLC	NC	83-3684111
CP Windy Hill, LLC	NC	83-3882884
CP Honeham, LLC	PA	83-4318310
CP Valley Forge, LLC	NC	83-3843913

Schedule Y
PART 1A - DETAIL OF INSURANCE HOLDING COMPANY SYSTEM

SCHEDULE Y
PART 1A - DETAIL OF INSURANCE HOLDING COMPANY SYSTEM

1	2	3	4	5	6	7	8	9	10	11	12	13	14	15	16
Group Code	Group Name	NAIC Company Code	ID Number	Federal RSSD	CK	Name of Securities Exchange, F Publicly Traded (U.S. or International)	Name of Parent, Subsidiaries or Affiliates	Domiciliary Location	Relationship to Reporting Entity	Directly Controlled by (Name of Entity/Person)	Type of Control (Ownership, Management, Attorney-in-Fact, Influence, Other) Percentage	Control is Provided (Yes/No/Partial)	Ultimate Controlling Entity(ies)/Person(s)	Is an SCA Filing Required? (Y/N)	
0601	Allegheny Group		61-0283071		775368	NYSE	Allegheny Corporation	DE	UP	Allegheny Corporation	Ownership	100.000	Allegheny Corporation	N	
0601	Allegheny Group				1140138		Allegheny Insurance Holdings LLC	DE	UP	Allegheny Corporation	Ownership	100.000	Allegheny Corporation	N	
0601	Allegheny Group		20-8101860				AHL Re LLC	VT	IA	Allegheny Insurance Holdings LLC	Ownership	100.000	Allegheny Corporation	N	
0601	Allegheny Group		38-1052868				Roundwood Asset Management LLC	DE	IA	Allegheny Insurance Holdings LLC	Ownership	100.000	Allegheny Corporation	N	
0601	Allegheny Group		38-1052868				CapSpecialty, Inc.	WI	UP	Allegheny Insurance Holdings LLC	Ownership	75.100	Allegheny Corporation	N	
0601	Allegheny Group		38-0971527				CapSpecialty, Inc.	WI	UP	Transatlantic Reinsurance Co.	Ownership	21.900	Allegheny Corporation	N	
0601	Allegheny Group		38-1782389				Capital Facilities Corporation	WI	LDP	CapSpecialty, Inc.	Ownership	100.000	Allegheny Corporation	N	
0601	Allegheny Group		46-1500243				Capital Facilities Corporation	WI	NA	CapSpecialty, Inc.	Ownership	100.000	Allegheny Corporation	N	
0601	Allegheny Group		38-0988869				CATA Services Co.	WI	NA	CapSpecialty, Inc.	Ownership	100.000	Allegheny Corporation	N	
0601	Allegheny Group		38-0988869				Capital Specialty Insurance Corporation	WI	PE	Capital Indemnity Corporation	Ownership	100.000	Allegheny Corporation	N	
0601	Allegheny Group		18819				Plate River Insurance Company	WI	PE	Capital Indemnity Corporation	Ownership	100.000	Allegheny Corporation	N	
0601	Allegheny Group		38-076357				RSU Group, Inc.	NE	IA	Allegheny Insurance Holdings LLC	Ownership	100.000	Allegheny Corporation	N	
0601	Allegheny Group		16-0868630				RSU Indemnity Company	NH	IA	RSU Group, Inc.	Ownership	100.000	Allegheny Corporation	N	
0601	Allegheny Group		58-1616360				Reinsurers Specialty Underwriting, Inc.	GA	NA	RSU Group, Inc.	Ownership	100.000	Allegheny Corporation	N	
0601	Allegheny Group		58-205341				RSU Surplus Lines Insurance Services, Inc.	GA	NA	RSU Group, Inc.	Ownership	100.000	Allegheny Corporation	N	
0601	Allegheny Group		83-2721193				RSU Insurance Exchange RPS, Inc.	DE	NA	RSU Surplus Lines Insurance Services, Inc.	Ownership	100.000	Allegheny Corporation	N	
0601	Allegheny Group		28-1169826				Covington Specialty Insurance Company	NH	IA	RSU Indemnity Company	Ownership	100.000	Allegheny Corporation	N	
0601	Allegheny Group		73-094137				Landmark American Insurance Company	NH	IA	RSU Indemnity Company	Ownership	100.000	Allegheny Corporation	N	
0601	Allegheny Group		80-0785986				Transatlantic Holdings, Inc.	DE	NA	Allegheny Corporation	Ownership	100.000	Allegheny Corporation	N	
0601	Allegheny Group		19453				Transatlantic Reinsurance Co. (TRC)	NY	IA	Transatlantic Holdings, Inc.	Ownership	100.000	Allegheny Corporation	N	
0601	Allegheny Group		20-4872787				Professional Risk Mgmt. Services, Inc.	DE	NA	CapSpecialty, Inc.	Ownership	100.000	Allegheny Corporation	N	
0601	Allegheny Group						TRM Co Limited	GBR	IA	Transatlantic Holdings, Inc.	Ownership	100.000	Allegheny Corporation	N	
0601	Allegheny Group						Cable Insurance Company Limited	GB	IA	Transatlantic Reinsurance Co.	Ownership	100.000	Allegheny Corporation	N	
0601	Allegheny Group						Pillar Capital Holdings Limited	BMU	NA	Transatlantic Holdings, Inc.	Ownership	50.000	Allegheny Corporation	N	
0601	Allegheny Group						Transatlantic Europe Services Ltd.	CHE	NA	Transatlantic Reinsurance Co.	Ownership	100.000	Allegheny Corporation	N	
0601	Allegheny Group						Transatlantic Underwriting Managers Agency Ltd.	CHE	NA	Transatlantic Holdings, Inc.	Ownership	100.000	Allegheny Corporation	N	
0601	Allegheny Group						Transatlantic Zurich Ltd.	CHE	IA	Transatlantic Reinsurance Co.	Ownership	100.000	Allegheny Corporation	N	
0601	Allegheny Group						Fair American Insurance and Reinsurance Co.	NY	IA	Transatlantic Reinsurance Co.	Ownership	100.000	Allegheny Corporation	N	
0601	Allegheny Group						Fair American Select Insurance Co.	DE	IA	Transatlantic Reinsurance Co.	Ownership	100.000	Allegheny Corporation	N	
0601	Allegheny Group						Transatlantic S.A.	PAN	NA	Transatlantic Reinsurance Co.	Ownership	100.000	Allegheny Corporation	N	
0601	Allegheny Group						TRC International Services, S.A.	PAN	NA	Transatlantic Reinsurance Co.	Ownership	100.000	Allegheny Corporation	N	
0601	Allegheny Group						Transatlantic Re (Argentina) S.A.	ARG	NA	Transatlantic Reinsurance Co.	Ownership	85.000	Allegheny Corporation	N	
0601	Allegheny Group						Transatlantic Re (Argentina) S.A.	ARG	NA	Transatlantic Reinsurance Co.	Ownership	5.000	Allegheny Corporation	N	
0601	Allegheny Group						TRC Escritorio de Representación no Brasil Ltda.	BRA	NA	Transatlantic Reinsurance Co.	Ownership	58.940	Allegheny Corporation	N	
0601	Allegheny Group						Transatlantic London Limited	GBR	NA	Transatlantic Reinsurance Co.	Ownership	100.000	Allegheny Corporation	N	

SCHEDULE Y
PART 1A - DETAIL OF INSURANCE HOLDING COMPANY SYSTEM

1	2	3	4	5	6	7	8	9	10	11	12	13	14	15	16
Group Code	Group Name	NAIC Company Code	D Number	Federal RSSD	CK	Name of Securities Exchange if Publicly Traded (U.S. or International)	Names of Parent, Subsidiaries or Affiliates	Domiciliary Location	Relationship to Reporting Entity	Directly Controlled by (Name of Entity/Person)	Type of Control (Ownership, Management, Attorney-in-Fact, Insurance, Other)	If Control is Controlling, Provide Percentage	Ultimate Controlling Entity(ies)/Person(s)	Is an SCA Filing Required? (Y/N)	
0501	Allegany Group						TransLife London Services Limited	GBR	NA	Transatlantic Reinsurance Co.	Ownership	100.000	Allegany Corporation	N	
0501	Allegany Group		11-3653728				Orion Risk Analysts, Inc.	NY	NA	Transatlantic Reinsurance Co.	Ownership	100.000	Allegany Corporation	N	
0501	Allegany Group		66-039019				El Sol Del Paraguay S.A.	PRY	NA	Transatlantic Reinsurance Co.	Ownership	46.000	Allegany Corporation	N	
0501	Allegany Group						Allegany Properties Holdings, LLC	DE	NA	Allegany Properties Holdings, LLC	Ownership	100.000	Allegany Corporation	N	
0501	Allegany Group						Allegany Properties LLC	DE	NA	Allegany Properties Holdings, LLC	Ownership	100.000	Allegany Corporation	N	
0501	Allegany Group						APH SLP, LLC	DE	NA	Allegany Properties Holdings, LLC	Ownership	100.000	Allegany Corporation	N	
0501	Allegany Group						APH Lee Services Sini Valley, LLC	DE	NA	Allegany Properties Holdings, LLC	Ownership	100.000	Allegany Corporation	N	
0501	Allegany Group						APH Terrace Vineyard Sacramento LLC	DE	NA	Allegany Properties Holdings, LLC	Ownership	100.000	Allegany Corporation	N	
0501	Allegany Group						APH Terrace Cathedral City, LLC	DE	NA	Allegany Properties Holdings, LLC	Ownership	100.000	Allegany Corporation	N	
0501	Allegany Group						Allegany Capital Corporation	DE	NA	Allegany Capital Corporation	Ownership	100.000	Allegany Corporation	N	
0501	Allegany Group		36-4128481				Wilbert Funeral Services Inc.	KS	NA	Allegany Capital Corporation	Ownership	45.000	Allegany Corporation	N	
0501	Allegany Group						CAC LLC	DE	NA	CAC LLC	Ownership	100.000	Allegany Corporation	N	
0501	Allegany Group		86-043532				YCCA, L.P.	DE	NA	Allegany Capital Corporation	Ownership	100.000	Allegany Corporation	N	
0501	Allegany Group		46-473803				BKH Holdings, Inc.	DE	NA	BKH Holdings, Inc.	Ownership	88.000	Allegany Corporation	N	
0501	Allegany Group		36-2827856				Boum & Koch, Inc.	DE	NA	Boum & Koch, Inc.	Ownership	100.000	Allegany Corporation	N	
0501	Allegany Group		37-1834404				BKI Acquisition LLC	L	NA	Boum & Koch, Inc.	Ownership	100.000	Allegany Corporation	N	
0501	Allegany Group		71-0075197				Diamond Technology Innovations, Inc.	WA	NA	Allegany Corporation	Ownership	100.000	Allegany Corporation	N	
0501	Allegany Group		46-2489287				Standed Oil Resources Corporation	DE	NA	Allegany Corporation	Ownership	100.000	Allegany Corporation	N	
0501	Allegany Group						Cuddo Parish Holdings LLC	DE	NA	Standed Oil Resources Corporation	Ownership	100.000	Allegany Corporation	N	
0501	Allegany Group						Natrona County Holdings LLC	DE	NA	Standed Oil Resources Corporation	Ownership	100.000	Allegany Corporation	N	
0501	Allegany Group						R.C. Tway Company, LLC	KY	NA	Allegany Capital Corporation	Ownership	79.200	Allegany Corporation	N	
0501	Allegany Group		61-0666810				Kentucky Trailer Services, LLC	KY	NA	R.C. Tway Company, LLC	Ownership	100.000	Allegany Corporation	N	
0501	Allegany Group						Kentucky Trailer Paint and Reconditioning Center, LLC	KY	NA	R.C. Tway Company, LLC	Ownership	100.000	Allegany Corporation	N	
0501	Allegany Group						Trailer Technologies Holdings, LLC	KY	NA	R.C. Tway Company, LLC	Ownership	100.000	Allegany Corporation	N	
0501	Allegany Group		46-3066576				Magna Van Development Company, LLC	KY	NA	R.C. Tway Company, LLC	Ownership	50.000	Allegany Corporation	N	
0501	Allegany Group		42-1059101				CEI Equipment Company	IA	NA	R.C. Tway Company, LLC	Ownership	88.400	Allegany Corporation	N	
0501	Allegany Group						Advanced Mobility & Shelter Technologies, LLC	L	NA	R.C. Tway Company, LLC	Ownership	100.000	Allegany Corporation	N	
0501	Allegany Group		26-9332980				KT European Holdings, LLC	KY	NA	R.C. Tway Company, LLC	Ownership	100.000	Allegany Corporation	N	
0501	Allegany Group						KT Smit Mobile Cooperat	ND	NA	KT European Holdings, LLC	Ownership	0.010	Allegany Corporation	N	
0501	Allegany Group						KT Smit Mobile Cooperat	ND	NA	KT Smit Mobile Cooperat	Ownership	89.990	Allegany Corporation	N	
0501	Allegany Group						GAS NL B.V.	ND	NA	KT Smit Mobile Cooperat	Ownership	100.000	Allegany Corporation	N	
0501	Allegany Group						GAS UK B.V.	ND	NA	KT Smit Mobile Cooperat	Ownership	100.000	Allegany Corporation	N	
0501	Allegany Group						Smit Mobile Equipments B.V.	ND	NA	GAS NL B.V.	Ownership	100.000	Allegany Corporation	N	
0501	Allegany Group						Smit Mobile Equipments (UK) Ltd B.V.	GBR	NA	GAS UK B.V.	Ownership	100.000	Allegany Corporation	N	

Statement for March 31, 2018 of the **Capitol Specialty Insurance Corporation**

SCHEDULE Y
PART 1A - DETAIL OF INSURANCE HOLDING COMPANY SYSTEM

1	2	3	4	5	6	7	8	9	10	11	12	13	14	15	16
Group Code	Group Name	NAIC Company Code	ID Number	Federal RSSD	CK	Name of Securities Exchange (U.S. or International)	Parent, Subsidiaries or Affiliates	Domiciliary Location	Relationship to Reporting Entity	Directly Controlled by (Name of Entity/Person)	Type of Control (Ownership, Board, Management, Attorney-in-Fact, Influence, Other)	Owned or Controlled Percentage	Ultimate Controlling Entity (if/Person(s))	Is an SCA Filing Required? (Y/N)	
0501	Allegheny Group		91-036825				Jazwares, LLC	DE	N/A	Allegheny Capital Corporation	Ownership	77.000	Allegheny Corporation	N	
0501	Allegheny Group		98-1183185				Jaz Toys HK Limited	DE	N/A	Allegheny Capital Corporation	Ownership	77.000	Allegheny Corporation	N	
0501	Allegheny Group		23-2871931				IPS-Integrated Project Services, LLC	DE	N/A	Allegheny Capital Corporation	Ownership	85.420	Allegheny Corporation	N	
0501	Allegheny Group		27-2069419				IPS Professional Engineers and Architects, PC	PA	N/A	IPS-Integrated Project Services, LLC	Ownership	100.000	Allegheny Corporation	N	
0501	Allegheny Group		75-2011658				Ecom Engineers, Private Limited	ND	N/A	IPS-Integrated Project Services, LLC	Ownership	18.430	Allegheny Corporation	N	
0501	Allegheny Group		35-245496				Sommatech, LLC	PA	N/A	IPS-Integrated Project Services, LLC	Ownership	50.000	Allegheny Corporation	N	
0501	Allegheny Group		98-0717613				xCell Strategic Consulting, LLC	PA	N/A	IPS-Integrated Project Services, LLC	Ownership	23.000	Allegheny Corporation	N	
0501	Allegheny Group		23-2865976				Summit Insurance Limited	CY	N/A	IPS-Integrated Project Services, LLC	Ownership	100.000	Allegheny Corporation	N	
0501	Allegheny Group		80-0736856				IPS-Integrated Project Services Corp.	PA	N/A	IPS-Integrated Project Services, LLC	Ownership	100.000	Allegheny Corporation	N	
0501	Allegheny Group		98-1169612				IPS-Metals, Private Limited	ND	N/A	IPS-Integrated Project Services, LLC	Ownership	99.000	Allegheny Corporation	N	
0501	Allegheny Group		98-1105723				Integrated Project Services International, P1 Ltd.	ND	N/A	IPS-Integrated Project Services, LLC	Ownership	85.000	Allegheny Corporation	N	
0501	Allegheny Group		98-1169890				IPS-Servicos de Projetos Integrados Ltda.	BRA	N/A	IPS-Integrated Project Services, LLC	Ownership	99.000	Allegheny Corporation	N	
0501	Allegheny Group		98-1198327				IPS BioPharmaceutical Technical Consulting (Tianjin) LLC	CHN	N/A	IPS-Integrated Project Services, LLC	Ownership	100.000	Allegheny Corporation	N	
0501	Allegheny Group		98-1169585				IPS-Integrated Project Services, P1 Ltd.	SGP	N/A	IPS-Integrated Project Services, LLC	Ownership	100.000	Allegheny Corporation	N	
0501	Allegheny Group		98-1344891				IPS-Integrated Project Services Limited	GBR	N/A	IPS-Integrated Project Services, LLC	Ownership	100.000	Allegheny Corporation	N	
0501	Allegheny Group		98-1469538				IPS-Integrated Project Services GmbH	CHE	N/A	IPS-Integrated Project Services Limited	Ownership	100.000	Allegheny Corporation	N	
0501	Allegheny Group		98-1381700				IPS-Integrated Project Services (Ireland) Limited	DEU	N/A	IPS-Integrated Project Services GmbH	Ownership	100.000	Allegheny Corporation	N	
0501	Allegheny Group		98-1345944				IPS-Integrated Project Services, ULC	IRL	N/A	IPS-Integrated Project Services Limited	Ownership	100.000	Allegheny Corporation	N	
0501	Allegheny Group		82-2226617				DGS-IPS, LLC	CAN	N/A	IPS-Integrated Project Services GmbH	Ownership	49.000	Allegheny Corporation	N	
0501	Allegheny Group		47-3724472				Jazwares Entertainment, LLC	DE	N/A	IPS-Integrated Project Services, LLC	Ownership	77.000	Allegheny Corporation	N	
0501	Allegheny Group		81-3074316				First Act, LLC	DE	N/A	Allegheny Capital Corporation	Ownership	77.000	Allegheny Corporation	N	
0501	Allegheny Group		82-1541168				855 Shotgun Road, LLC	FL	N/A	Allegheny Capital Corporation	Ownership	100.000	Allegheny Corporation	N	
0501	Allegheny Group		47-2815390				559 Shotgun Road, LLC	FL	N/A	Jazwares, LLC	Ownership	100.000	Allegheny Corporation	N	
0501	Allegheny Group		47-4633839				1087 Studios, LLC DBA/JazWings	DE	N/A	Jazwares, LLC	Ownership	100.000	Allegheny Corporation	N	
0501	Allegheny Group		98-1279887				Jaz Toys UK Ltd.	GBR	N/A	Jazwares, LLC	Ownership	100.000	Allegheny Corporation	N	
0501	Allegheny Group		82-3748487				Jazwares GmbH	DEU	N/A	Jaz Toys HK Limited	Ownership	100.000	Allegheny Corporation	N	
0501	Allegheny Group		82-3748487				Zag Toys Holdings, LLC	DE	N/A	Allegheny Capital Corporation	Ownership	77.000	Allegheny Corporation	N	
0501	Allegheny Group		20-1535505				Zag Toys, LLC	DE	N/A	Zag Toys Holdings, LLC	Ownership	75.000	Allegheny Corporation	N	
0501	Allegheny Group		82-3748487				WWSC Holdings, LLC	DE	N/A	Allegheny Capital Corporation	Ownership	80.000	Allegheny Corporation	N	
0501	Allegheny Group		82-3748487				Tifton Steel, LLC	DE	N/A	WWSC Holdings, LLC	Ownership	100.000	Allegheny Corporation	N	
0501	Allegheny Group		82-3748487				WEW-APCO Steel LLC	DE	N/A	WWSC Holdings, LLC	Ownership	100.000	Allegheny Corporation	N	

Statement for March 31, 2019 of the **Capitol Specialty Insurance Corporation**

SCHEDULE Y
PART 1A - DETAIL OF INSURANCE HOLDING COMPANY SYSTEM

1	2	3	4	5	6	7	8	9	10	11	12	13	14	15	16
Group Code	Group Name	NAIC Company Code	D Number	Federal RSSD	CK	Name of Securities Exchange if Publicly Traded (U.S. or International)	Names of Parent, Subsidiaries or Affiliates	Domestic Location	Relationship to Reporting Entity	Directly Controlled by (Name of Entity/Person)	Type of Control (Ownership, Board, Management, Attorney-in-Fact, Insurance, Other)	If Control is Ownership Provide Percentage	Ultimate Controlling Entity(ies)/Person(s)	Is an SCA Filing Required? (Y/N)	
0501	Allegheny Group		27-0915359				W&W Steel Erectors, LLC	DE	NA	W&W Holdings, LLC	Ownership	100.000	Allegheny Corporation	N	
0501	Allegheny Group		28-1908985				W&W Steel Erectors, LLC	DE	NA	W&W Holdings, LLC	Ownership	100.000	Allegheny Corporation	N	
0501	Allegheny Group		27-0765840				Hirschfeld Properties LP	TX	NA	W&W-AFCO Steel LLC	Ownership	100.000	Allegheny Corporation	N	
0501	Allegheny Group		73-0650988				Consolidated Technical Services, Ltd.	OK	NA	W&W-AFCO Steel LLC	Ownership	100.000	Allegheny Corporation	N	
0501	Allegheny Group		73-0650988				W&W Steel Company	OK	NA	W&W Holdings, LLC	Ownership	100.000	Allegheny Corporation	N	
0501	Allegheny Group		82-1473715				W&W Engineering Private, Ltd. India	ND	NA	W&W Holdings, LLC	Ownership	89.000	Allegheny Corporation	N	
0501	Allegheny Group		82-1473715				W&W Engineering Private, Ltd. India	ND	NA	W&W Steel Company	Ownership	1.000	Allegheny Corporation	N	
0501	Allegheny Group		82-1473715				W&W Engineering Private, Ltd. India	ND	NA	Allegheny Capital Corporation	Ownership	85.000	Allegheny Corporation	N	
0501	Allegheny Group		34-1978941				Concord Hospitality Enterprises Company, LLC	DE	NA	CHECO Holdings, LLC	Ownership	100.000	Allegheny Corporation	N	
0501	Allegheny Group		20-0243763				Common Oaks Lodging, LLC	DE	NA	Concord Hospitality Enterprises Company, LLC	Ownership	100.000	Allegheny Corporation	N	
0501	Allegheny Group		46-2787863				Concord Payroll, LLC	NC	NA	Concord Hospitality Enterprises Company, LLC	Ownership	100.000	Allegheny Corporation	N	
0501	Allegheny Group		26-9796822				CHECO Texas Holding Co., LLC	OH	NA	Concord Hospitality Enterprises Company, LLC	Ownership	100.000	Allegheny Corporation	N	
0501	Allegheny Group		36-4744156				Concord Holding Springfield HWS, LLC	DE	NA	Concord Hospitality Enterprises Company, LLC	Ownership	100.000	Allegheny Corporation	N	
0501	Allegheny Group		37-1508389				Concord Hospitality Services, LLC	NC	NA	Concord Payroll, LLC	Ownership	100.000	Allegheny Corporation	N	
0501	Allegheny Group		82-0964830				Concord Holding Charlotte, LLC	NC	NA	Concord Payroll, LLC	Ownership	100.000	Allegheny Corporation	N	
0501	Allegheny Group		81-4620701				Concord Payroll - Brighton Oy (IL) LLC	NC	NA	Concord Payroll, LLC	Ownership	100.000	Allegheny Corporation	N	
0501	Allegheny Group		47-5816979				Concord Payroll - Cb Philly, LLC	NC	NA	Concord Payroll, LLC	Ownership	100.000	Allegheny Corporation	N	
0501	Allegheny Group		81-5096286				Concord Payroll - Gainesville, LLC	NC	NA	Concord Payroll, LLC	Ownership	100.000	Allegheny Corporation	N	
0501	Allegheny Group		47-5186997				Concord Payroll - Grand Rapids, LLC	NC	NA	Concord Payroll, LLC	Ownership	100.000	Allegheny Corporation	N	
0501	Allegheny Group		47-3940596				Concord Payroll - Hi Airport, LLC	NC	NA	Concord Payroll, LLC	Ownership	100.000	Allegheny Corporation	N	
0501	Allegheny Group		81-1963318				Concord Payroll - Hi Airport, LLC	NC	NA	Concord Payroll, LLC	Ownership	100.000	Allegheny Corporation	N	
0501	Allegheny Group		47-5340347				Concord Payroll - Hi Universal, LLC	NC	NA	Concord Payroll, LLC	Ownership	100.000	Allegheny Corporation	N	
0501	Allegheny Group		47-2703377				Concord Payroll - Hph, LLC	NC	NA	Concord Payroll, LLC	Ownership	100.000	Allegheny Corporation	N	
0501	Allegheny Group		47-4753820				Concord Payroll - Late Nona, LLC	NC	NA	Concord Payroll, LLC	Ownership	100.000	Allegheny Corporation	N	
0501	Allegheny Group		80-0962007				Concord Payroll - Lalewood, LLC	NC	NA	Concord Payroll, LLC	Ownership	100.000	Allegheny Corporation	N	
0501	Allegheny Group		47-4653636				Concord Payroll - Lansing, LLC	NC	NA	Concord Payroll, LLC	Ownership	100.000	Allegheny Corporation	N	
0501	Allegheny Group		80-0960179				Concord Payroll - Midtown, LLC	NC	NA	Concord Payroll, LLC	Ownership	100.000	Allegheny Corporation	N	
0501	Allegheny Group		37-1714781				Concord Payroll - Novi, LLC	NC	NA	Concord Payroll, LLC	Ownership	100.000	Allegheny Corporation	N	
0501	Allegheny Group		37-1714781				Concord Payroll - NY 28th, LLC	NC	NA	Concord Payroll, LLC	Ownership	100.000	Allegheny Corporation	N	

Statement for March 31, 2019 of the **Capitol Specialty Insurance Corporation**

SCHEDULE Y
PART 1A - DETAIL OF INSURANCE HOLDING COMPANY SYSTEM

1	2	3	4	5	6	7	8	9	10	11	12	13	14	15	16
Group Code	Group Name	NAIC Company Code	ID Number	Federal RSSD	CK	Name of Securities Exchange If Publicly Traded (U.S. or International)	Names of Parent, Subsidiaries or Affiliates	Domiciliary Location	Relationship to Reporting Entity	Directly Controlled by (Name of Entity/Person)	Type of Control (Ownership Board, Management, Attorney-in-Fact, Influence, Other)	Ownership Percentage	Ultimate Controlling Entity (Entity/Person)	Is an SCA Filing Required? (Y/N)	
0501	Allegheny Group		81-2534641				Concord Payroll - Port Washington LLC	NC	N/A	Concord Payroll, LLC	Ownership	100.000	Allegheny Corporation	N	
0501	Allegheny Group		47-4453359				Concord Payroll - Savannah LI LLC	NC	N/A	Concord Payroll, LLC	Ownership	100.000	Allegheny Corporation	N	
0501	Allegheny Group		38-3890990				Concord Payroll - TBD-Hotel 36, LLC	NC	N/A	Concord Payroll, LLC	Ownership	100.000	Allegheny Corporation	N	
0501	Allegheny Group		37-1711782				Concord Payroll - TBD-Hotel 38, LLC	NC	N/A	Concord Payroll, LLC	Ownership	100.000	Allegheny Corporation	N	
0501	Allegheny Group		35-2466174				Concord Payroll - TBD-Hotel 40, LLC	NC	N/A	Concord Payroll, LLC	Ownership	100.000	Allegheny Corporation	N	
0501	Allegheny Group		37-1711788				Concord Payroll - TBD-Hotel 42, LLC	NC	N/A	Concord Payroll, LLC	Ownership	100.000	Allegheny Corporation	N	
0501	Allegheny Group		38-473294				Concord Payroll - TBD-Hotel 43, LLC	NC	N/A	Concord Payroll, LLC	Ownership	100.000	Allegheny Corporation	N	
0501	Allegheny Group		27-2677806				Concord Payroll - TBD-Hotel XX, LLC	NC	N/A	Concord Payroll, LLC	Ownership	100.000	Allegheny Corporation	N	
0501	Allegheny Group		82-1939461				Concord Payroll Am LLC	NC	N/A	Concord Payroll, LLC	Ownership	100.000	Allegheny Corporation	N	
0501	Allegheny Group		82-1939465				Concord Payroll Am E LLC	NC	N/A	Concord Payroll, LLC	Ownership	100.000	Allegheny Corporation	N	
0501	Allegheny Group		82-0746304				Concord Payroll Cyn II, LLC	NC	N/A	Concord Payroll, LLC	Ownership	100.000	Allegheny Corporation	N	
0501	Allegheny Group		27-0777601				Concord Payroll EB, LLC	NC	N/A	Concord Payroll, LLC	Ownership	100.000	Allegheny Corporation	N	
0501	Allegheny Group		82-5451785				Concord Payroll Eddie LLC	NC	N/A	Concord Payroll, LLC	Ownership	100.000	Allegheny Corporation	N	
0501	Allegheny Group		82-5309228				Concord Payroll Jacksonville LLC	NC	N/A	Concord Payroll, LLC	Ownership	100.000	Allegheny Corporation	N	
0501	Allegheny Group		82-1984827				Concord Payroll LV LLC	NC	N/A	Concord Payroll, LLC	Ownership	100.000	Allegheny Corporation	N	
0501	Allegheny Group		38-360271				Concord Payroll Moon, LLC	NC	N/A	Concord Payroll, LLC	Ownership	100.000	Allegheny Corporation	N	
0501	Allegheny Group		81-3749486				Concord Payroll Nyc 46th, LLC	NC	N/A	Concord Payroll, LLC	Ownership	100.000	Allegheny Corporation	N	
0501	Allegheny Group		27-0777647				Concord Payroll RLJ, LLC	NC	N/A	Concord Payroll, LLC	Ownership	100.000	Allegheny Corporation	N	
0501	Allegheny Group		27-1049728				Concord Payroll SHS Airport Pittsburgh PA LLC	NC	N/A	Concord Payroll, LLC	Ownership	100.000	Allegheny Corporation	N	
0501	Allegheny Group		81-4110882				Concord Payroll Wharf One, LLC	NC	N/A	Concord Payroll, LLC	Ownership	100.000	Allegheny Corporation	N	
0501	Allegheny Group		82-0503900				Concord Payroll Wharf Two, LLC	NC	N/A	Concord Payroll, LLC	Ownership	100.000	Allegheny Corporation	N	
0501	Allegheny Group		35-2465466				Concord Payroll Arlington, LLC	NC	N/A	Concord Payroll, LLC	Ownership	100.000	Allegheny Corporation	N	
0501	Allegheny Group		38-4770889				Concord Payroll-Charlotte Vermont, LLC	NC	N/A	Concord Payroll, LLC	Ownership	100.000	Allegheny Corporation	N	
0501	Allegheny Group		30-0609196				Concord Payroll-Cleveland 8th LLC	NC	N/A	Concord Payroll, LLC	Ownership	100.000	Allegheny Corporation	N	
0501	Allegheny Group		38-4779256				Concord Payroll-Columbus Oentariy LLC	NC	N/A	Concord Payroll, LLC	Ownership	100.000	Allegheny Corporation	N	
0501	Allegheny Group		37-1749579				Concord Payroll-Cumberland LLC	NC	N/A	Concord Payroll, LLC	Ownership	100.000	Allegheny Corporation	N	
0501	Allegheny Group		38-4778086				Concord Payroll-Dayton LLC	NC	N/A	Concord Payroll, LLC	Ownership	100.000	Allegheny Corporation	N	
0501	Allegheny Group		81-2339468				Concord Payroll-Gain Mills LLC	NC	N/A	Concord Payroll, LLC	Ownership	100.000	Allegheny Corporation	N	
0501	Allegheny Group		38-3923065				Concord Payroll-Greensburg CY LLC	NC	N/A	Concord Payroll, LLC	Ownership	100.000	Allegheny Corporation	N	
0501	Allegheny Group		38-4777947				Concord Payroll-Houston JF K LLC	NC	N/A	Concord Payroll, LLC	Ownership	100.000	Allegheny Corporation	N	
0501	Allegheny Group		81-1730401				Concord Payroll-Neville LLC	NC	N/A	Concord Payroll, LLC	Ownership	100.000	Allegheny Corporation	N	
0501	Allegheny Group		38-3923940				Concord Payroll-Raleigh Ren LLC	NC	N/A	Concord Payroll, LLC	Ownership	100.000	Allegheny Corporation	N	
0501	Allegheny Group		37-1749624				Concord Payroll-Reading LLC	NC	N/A	Concord Payroll, LLC	Ownership	100.000	Allegheny Corporation	N	
0501	Allegheny Group		81-1730018				Concord Payroll-Renoire LLC	NC	N/A	Concord Payroll, LLC	Ownership	100.000	Allegheny Corporation	N	
0501	Allegheny Group		30-0609760				Concord Payroll-Sellers CY LLC	NC	N/A	Concord Payroll, LLC	Ownership	100.000	Allegheny Corporation	N	

Statement for March 31, 2018 of the **Capitol Specialty Insurance Corporation**

SCHEDULE Y
PART 1A - DETAIL OF INSURANCE HOLDING COMPANY SYSTEM

1	2	3	4	5	6	7	8	9	10	11	12	13	14	15	16
Group Code	Group Name	NAIC Company Code	D Number	Federal RSSD	CK	Name of Securities Exchange if Publicly Traded (U.S. or International)	Names of Parent, Subsidiaries or Affiliates	Domiciliary Location	Relationship to Reporting Entity	Directly Controlled by (Name of Entity/Person)	Type of Control (Ownership, Board, Management, Attorney-in-Fact, Insurance, Other)	If Control is Ownership, Provide Percentage	Ultimate Controlling Entity(ies)/Parent(s)	Is an SCA Filing Required? (Y/N)	
0501	Allegheny Group		35-4769541				Concord Payroll-South Beach, LLC	NC	NA	Concord Payroll, LLC	Ownership	100.000	Allegheny Corporation	N	
0501	Allegheny Group		Z1-3293340				Concord Payroll-TBDH0126, LLC	NC	NA	Concord Payroll, LLC	Ownership	100.000	Allegheny Corporation	N	
0501	Allegheny Group		Z1-4645280				Concord Payroll-TBDH0130, LLC	NC	NA	Concord Payroll, LLC	Ownership	100.000	Allegheny Corporation	N	
0501	Allegheny Group		Z1-4645286				Concord Payroll-TBDH0131, LLC	NC	NA	Concord Payroll, LLC	Ownership	100.000	Allegheny Corporation	N	
0501	Allegheny Group		Z1-4645316				Concord Payroll-TBDH0132, LLC	NC	NA	Concord Payroll, LLC	Ownership	100.000	Allegheny Corporation	N	
0501	Allegheny Group		Z1-4645476				Concord Payroll-TBDH0134, LLC	NC	NA	Concord Payroll, LLC	Ownership	100.000	Allegheny Corporation	N	
0501	Allegheny Group		32-0433373				Concord Payroll-Washington CY LLC	NC	NA	Concord Payroll, LLC	Ownership	100.000	Allegheny Corporation	N	
0501	Allegheny Group		82-3868965				Concord Payroll-Waukegan LLC	NC	NA	Concord Payroll, LLC	Ownership	100.000	Allegheny Corporation	N	
0501	Allegheny Group		85-1979169				CP Atlanta Midtown, LLC	NC	NA	Concord Payroll, LLC	Ownership	100.000	Allegheny Corporation	N	
0501	Allegheny Group		35-4778717				CP Battleground LLC	NC	NA	Concord Payroll, LLC	Ownership	100.000	Allegheny Corporation	N	
0501	Allegheny Group		82-3666707				CP Beaufort LLC	NC	NA	Concord Payroll, LLC	Ownership	100.000	Allegheny Corporation	N	
0501	Allegheny Group		82-4019462				CP Brookfield LLC	NC	NA	Concord Payroll, LLC	Ownership	100.000	Allegheny Corporation	N	
0501	Allegheny Group		81-2728220				CP Edison LI, LLC	TX	NA	Concord Payroll, LLC	Ownership	100.000	Allegheny Corporation	N	
0501	Allegheny Group		83-2329429				CP Houston CB LLC	NC	NA	Concord Payroll, LLC	Ownership	100.000	Allegheny Corporation	N	
0501	Allegheny Group		81-1970748				CP Jersey City U, LLC	TX	NA	Concord Payroll, LLC	Ownership	100.000	Allegheny Corporation	N	
0501	Allegheny Group		83-2626210				CP Loveland LLC	CO	NA	Concord Payroll, LLC	Ownership	100.000	Allegheny Corporation	N	
0501	Allegheny Group		82-2659462				CP Maiden Lane LLC	NY	NA	Concord Payroll, LLC	Ownership	100.000	Allegheny Corporation	N	
0501	Allegheny Group		82-2784272				CP Milwaukee CB LLC	WI	NA	Concord Payroll, LLC	Ownership	100.000	Allegheny Corporation	N	
0501	Allegheny Group		82-3665105				CP Newark LLC	NC	NA	Concord Payroll, LLC	Ownership	100.000	Allegheny Corporation	N	
0501	Allegheny Group		83-1131897				CP Nulu, LLC	NC	NA	Concord Payroll, LLC	Ownership	100.000	Allegheny Corporation	N	
0501	Allegheny Group		83-2442287				CP Seacous LLC	NC	NA	Concord Payroll, LLC	Ownership	100.000	Allegheny Corporation	N	
0501	Allegheny Group		83-2298107				CP Surfside LLC	NC	NA	Concord Payroll, LLC	Ownership	100.000	Allegheny Corporation	N	
0501	Allegheny Group		83-3753917				CP Tudorhale LLC	NY	NA	Concord Payroll, LLC	Ownership	100.000	Allegheny Corporation	N	
0501	Allegheny Group		26-3076326				CP Woburn LLC	NC	NA	Concord Payroll, LLC	Ownership	100.000	Allegheny Corporation	N	
0501	Allegheny Group		26-3076326				Chico Hiding Company, LLC	TX	NA	Chico Hiding Company, LLC	Ownership	100.000	Allegheny Corporation	N	
0501	Allegheny Group		26-4259812				Chico Hiding Company San Antonio CY, LLC	TX	NA	Chico Hiding Company, LLC	Ownership	100.000	Allegheny Corporation	N	
0501	Allegheny Group		26-4299206				Chico Hiding Company Webster SHS, LLC	TX	NA	Chico Hiding Company, LLC	Ownership	100.000	Allegheny Corporation	N	
0501	Allegheny Group		26-4299222				Chico Hiding Company Houston FKS SHS, LLC	TX	NA	Chico Hiding Company, LLC	Ownership	100.000	Allegheny Corporation	N	
0501	Allegheny Group		26-4259842				Chico Hiding Company San Antonio RI, LLC	TX	NA	Chico Hiding Company, LLC	Ownership	100.000	Allegheny Corporation	N	
0501	Allegheny Group		Z1-0788916				Chico Hiding Company Broadbloom, LLC	TX	NA	Chico Hiding Company, LLC	Ownership	100.000	Allegheny Corporation	N	
0501	Allegheny Group		83-3632960				Common Oaks Lodging LLC	DE	NA	Concord Payroll, LLC	Ownership	100.000	Allegheny Corporation	N	
0501	Allegheny Group		83-3724062				CP Johns Creek LLC	NC	NA	Concord Payroll, LLC	Ownership	100.000	Allegheny Corporation	N	
0501	Allegheny Group		83-3715074				CP HK Irvine LLC	NC	NA	Concord Payroll, LLC	Ownership	100.000	Allegheny Corporation	N	
0501	Allegheny Group		83-3654111				CP TP Irvine LLC	NC	NA	Concord Payroll, LLC	Ownership	100.000	Allegheny Corporation	N	
0501	Allegheny Group		83-3654111				CP Georgia LN LLC	NC	NA	Concord Payroll, LLC	Ownership	100.000	Allegheny Corporation	N	

Statement for March 31, 2016 of the **Capitol Specialty Insurance Corporation**

SCHEDULE Y
PART 1A - DETAIL OF INSURANCE HOLDING COMPANY SYSTEM

1	2	3	4	5	6	7	8	9	10	11	12	13	14	15	16
Group Code	Group Name	NAC Company Code	ID Number	Federal RSSD		Name of Securities Exchange If Publicly Traded (U.S. or International)	Name of Parent, Subsidiaries or Affiliates	Domiciliary Location	Relationship to Reporting Entity	Directly Controlled by (Name of Entity/Person)	Type of Control (Ownership, Board, Management, Attorney-in-Fact, Influence, Other)	If Control is Ownership Provide Percentage	Ultimate Controlling Entity(ies)/Person(s)	Is an SCA Filing Required? (Y/N)	
0501	Allegheny Group		83-368324		CK		CP Windy Hill LLC	NC	N/A	Concord Payroll, LLC	Ownership	100.000	Allegheny Corporation	N	
0501	Allegheny Group		83-4318310				CP Hershman LLC	PA	N/A	Concord Payroll, LLC	Ownership	100.000	Allegheny Corporation	N	
0501	Allegheny Group		83-3643913				CP Valley Forge LLC	NC	N/A	Concord Payroll, LLC	Ownership	100.000	Allegheny Corporation	N	

PART 1 - LOSS EXPERIENCE

Lines of Business	Current Year to Date			Prior Year to Date Direct Loss Percentage
	1 Direct Premiums Earned	2 Direct Losses Incurred	3 Direct Loss Percentage	
1. Fire.....	68,536	(67,776)	(98.991)	80.510
2. Allied lines.....	6,504	12,009	184.640	411.298
3. Farmowners multiple peril.....			0.000	
4. Homeowners multiple peril.....			0.000	
5. Commercial multiple peril.....	7,167,477	3,477,917	48.524	59.025
6. Mortgage guaranty.....			0.000	
8. Ocean marine.....			0.000	
9. Inland marine.....	53,340	105,613	198.000	97.630
10. Financial guaranty.....			0.000	
11.1. Medical professional liability - occurrence.....	1,562,673	450,723	28.843	47.664
11.2. Medical professional liability - claims-made.....	3,623,677	1,502,148	41.454	36.693
12. Earthquake.....			0.000	
13. Group accident and health.....			0.000	
14. Credit accident and health.....			0.000	
15. Other accident and health.....			0.000	
16. Workers' compensation.....			0.000	
17.1. Other liability-occurrence.....	21,673,866	12,846,974	59.274	55.673
17.2. Other liability-claims made.....	14,896,328	6,853,006	46.008	32.052
17.3. Excess workers' compensation.....			0.000	
18.1. Products liability-occurrence.....	3,348,827	1,731,088	51.892	41.023
18.2. Products liability-claims made.....			0.000	
19.1. 19.2 Private passenger auto liability.....			0.000	
19.3. 19.4 Commercial auto liability.....			0.000	
21. Auto physical damage.....			0.000	
22. Aircraft (all perils).....			0.000	
23. Fidelity.....			0.000	
24. Surety.....			0.000	
26. Burglary and theft.....	1,407	6,926	492.253	27.303
27. Boiler and machinery.....			0.000	
28. Credit.....			0.000	
29. International.....			0.000	
30. Warranty.....			0.000	
31. Reinsurance-nonproportional assumed property.....	XXX	XXX	XXX	XXX
32. Reinsurance-nonproportional assumed liability.....	XXX	XXX	XXX	XXX
33. Reinsurance-nonproportional assumed financial lines.....	XXX	XXX	XXX	XXX
34. Aggregate write-ins for other lines of business.....	0	0	0.000	
35. Totals.....	52,401,635	26,918,628	51.370	47.793
DETAILS OF WRITE-INS				
3401.....			0.000	
3402.....			0.000	
3403.....			0.000	
3498. Sum. of remaining write-ins for Line 34 from overflow page.....	0	0	0.000	XXX
3499. Totals (Lines 3401 thru 3403 plus 3498) (Line 34).....	0	0	0.000	

PART 2 - DIRECT PREMIUMS WRITTEN

Lines of Business	1	2	3
	Current Quarter	Current Year to Date	Prior Year Year to Date
1. Fire.....	50,244	50,244	151,029
2. Allied lines.....	4,043	4,043	13,380
3. Farmowners multiple peril.....			
4. Homeowners multiple peril.....			
5. Commercial multiple peril.....	6,313,193	6,313,193	7,495,223
6. Mortgage guaranty.....			
8. Ocean marine.....			
9. Inland marine.....	43,913	43,913	44,648
10. Financial guaranty.....			
11.1. Medical professional liability - occurrence.....	1,510,918	1,510,918	1,148,457
11.2. Medical professional liability - claims made.....	5,796,005	5,796,005	3,199,943
12. Earthquake.....			
13. Group accident and health.....			
14. Credit accident and health.....			
15. Other accident and health.....			
16. Workers' compensation.....			
17.1. Other liability-occurrence.....	20,519,380	20,519,380	18,496,474
17.2. Other liability-claims made.....	15,801,956	15,801,956	13,673,265
17.3. Excess workers' compensation.....			
18.1. Products liability-occurrence.....	3,510,408	3,510,408	2,769,115
18.2. Products liability-claims made.....			
19.1. 19.2 Private passenger auto liability.....			
19.3. 19.4 Commercial auto liability.....			
21. Auto physical damage.....			
22. Aircraft (all perils).....			
23. Fidelity.....			
24. Surety.....			
26. Burglary and theft.....	838	838	2,296
27. Boiler and machinery.....			
28. Credit.....			
29. International.....			
30. Warranty.....			
31. Reinsurance-nonproportional assumed property.....	XXX	XXX	XXX
32. Reinsurance-nonproportional assumed liability.....	XXX	XXX	XXX
33. Reinsurance-nonproportional assumed financial lines.....	XXX	XXX	XXX
34. Aggregate write-ins for other lines of business.....	0	0	0
35. Totals.....	53,550,898	53,550,898	46,993,831
DETAILS OF WRITE-INS			
3401.....			
3402.....			
3403.....			
3498. Sum. of remaining write-ins for Line 34 from overflow page.....	0	0	0
3499. Totals (Lines 3401 thru 3403 plus 3498) (Line 34).....	0	0	0

PART 3 (000 omitted)
LOSS AND LOSS ADJUSTMENT EXPENSE RESERVES SCHEDULE

	1	2	3	4	5	6	7	8	9	10	11	12	13
Years in Which Losses Occurred	Prior Year-End Known Case Losses and LAE Reserves	Prior Year-End IBNR Losses and LAE Reserves	Total Prior Year-End Loss and LAE Reserves (Cols. 1 + 2)	2019 Loss and LAE Payments Reported as of Prior Year-End	2019 Loss and LAE Payments on Claims Unreported as of Prior Year-End	Total 2019 Loss and LAE Payments (Cols. 4 + 5)	Q.S. Date Known Case Losses and LAE Reserves on Claims Reported and Open as of Prior Year-End	Q.S. Date Known Case Losses and LAE Reserves on Claims Reported or Reopened Subsequent to Prior Year-End	O.S. Date BNR Losses and LAE Reserves	Total O.S. Losses and LAE Reserves (Cols. 7 + 8 + 9)	Prior Year-End Case Loss and LAE Reserves Developed (Savings)/Deficiency (Cols. 4 + 7 minus Col. 1)	Prior Year-End BNR Losses and LAE Reserves Developed (Savings)/Deficiency (Cols. 5 + 8 + 9 minus Col. 2)	Prior Year-End Total Loss and LAE Reserves Developed (Savings)/Deficiency (Cols. 11 + 12)
1. 2016 + Prior	6,865	6,844	13,709	1,676	4	1,680	6,461	131	5,518	12,110	1,272	(1,191)	81
2. 2017	4,186	7,623	11,708	810	10	820	4,878	128	6,446	11,462	1,603	(939)	564
3. Subtotals 2017 + Prior	11,050	14,367	25,417	2,486	14	2,500	11,339	259	11,964	23,562	2,775	(2,130)	645
4. 2018	4,311	16,664	19,866	1,679	69	1,648	4,366	304	13,317	18,007	1,654	(1,664)	(210)
5. Subtotals 2018 + Prior	16,361	29,921	46,282	4,065	83	4,148	16,726	563	26,281	41,669	4,429	(3,994)	435
6. 2019	XXX	XXX	XXX	XXX	514	514	XXX	789	5,070	5,629	XXX	XXX	XXX
7. Totals	16,361	29,921	46,282	4,065	597	4,662	16,726	1,322	30,351	47,388	4,429	(3,994)	435
8. Prior Year-End Surplus As Regards Policyholders	60,748												
											Col. 11, Line 7	Col. 12, Line 7	Col. 13, Line 7
											As % of Col. 1, Line 7	As % of Col. 2, Line 7	As % of Col. 3, Line 7
											1. 28.8 %	2. 13.3 %	3. 1.0 %
													Col. 13, Line 7
													Line 8
													4. 0.7 %

SUPPLEMENTAL EXHIBITS AND SCHEDULES INTERROGATORIES

The following supplemental reports are required to be filed as part of your statement filing. However, in the event that your company does not transact the type of business for which the special report must be filed, your response of NO to the specific interrogatory will be accepted in lieu of filing a "NONE" report and a bar code will be printed below. If the supplement is required of your company but is not being filed for whatever reason, enter SEE EXPLANATION and provide an explanation following the interrogatory questions.

	Response
1. Will the Trusteed Surplus Statement be filed with the state of domicile and the NAIC with this statement?	<u>NO</u>
2. Will Supplement A to Schedule T (Medical Professional Liability Supplement) be filed with this statement?	<u>YES</u>
3. Will the Medicare Part D Coverage Supplement be filed with the state of domicile and the NAIC with this statement?	<u>NO</u>
4. Will the Director and Officer Insurance Coverage Supplement be filed with the state of domicile and the NAIC with this statement?	<u>YES</u>

Explanation:

1. The data for this supplement is not required to be filed.
- 2.
3. The data for this supplement is not required to be filed.
- 4.

Bar Code:



NONE

Statement for March 31, 2019 of the **Capitol Specialty Insurance Corporation**
SCHEDULE A - VERIFICATION
Real Estate

	1 Year to Date	2 Prior Year Ended December 31
1. Book/adjusted carrying value, December 31 of prior year.....	.0	
2. Cost of acquired:		
2.1 Actual cost at time of acquisition.....		
2.2 Additional investment made after acquisition.....		
3. Current year change in encumbrances.....		
4. Total gain (loss) on disposals.....		
5. Deduct amounts received on disposals.....		
6. Total foreign exchange change in book/adjusted carrying value.....		
7. Deduct current year's other-than-temporary impairment recognized.....		
8. Deduct current year's depreciation.....		
9. Book/adjusted carrying value at end of current period (Lines 1+2+3+4+5+6-7-8).....	.0	.0
10. Deduct total nonadmitted amounts.....		
11. Statement value at end of current period (Line 9 minus Line 10).....	.0	.0

SCHEDULE B - VERIFICATION
Mortgage Loans

	1 Year to Date	2 Prior Year Ended December 31
1. Book value/recorded investment excluding accrued interest, December 31 of prior year.....	.0	
2. Cost of acquired:		
2.1 Actual cost at time of acquisition.....		
2.2 Additional investment made after acquisition.....		
3. Capitalized deferred interest and other.....		
4. Accrual of discount.....		
5. Unrealized valuation increase (decrease).....		
6. Total gain (loss) on disposals.....		
7. Deduct amounts received on disposals.....		
8. Deduct amortization of premium and mortgage interest points and commitment fees.....		
9. Total foreign exchange change in book value/recorded investment excluding accrued interest.....		
10. Deduct current year's other-than-temporary impairment recognized.....		
11. Book value/recorded investment excluding accrued interest at end of current period (Lines 1+2+3+4+5+6-7-8+9-10).....	.0	.0
12. Total valuation allowance.....		
13. Subtotal (Line 11 plus Line 12).....	.0	.0
14. Deduct total nonadmitted amounts.....		
15. Statement value at end of current period (Line 13 minus Line 14).....	.0	.0

SCHEDULE BA - VERIFICATION
Other Long-Term Invested Assets

	1 Year to Date	2 Prior Year Ended December 31
1. Book/adjusted carrying value, December 31 of prior year.....	.0	
2. Cost of acquired:		
2.1 Actual cost at time of acquisition.....		
2.2 Additional investment made after acquisition.....		
3. Capitalized deferred interest and other.....		
4. Accrual of discount.....		
5. Unrealized valuation increase (decrease).....		
6. Total gain (loss) on disposals.....		
7. Deduct amounts received on disposals.....		
8. Deduct amortization of premium and depreciation.....		
9. Total foreign exchange change in book/adjusted carrying value.....		
10. Deduct current year's other-than-temporary impairment recognized.....		
11. Book/adjusted carrying value at end of current period (Lines 1+2+3+4+5+6-7-8+9-10).....	.0	.0
12. Deduct total nonadmitted amounts.....		
13. Statement value at end of current period (Line 11 minus Line 12).....	.0	.0

SCHEDULE D - VERIFICATION
Bonds and Stocks

	1 Year to Date	2 Prior Year Ended December 31
1. Book/adjusted carrying value of bonds and stocks, December 31 of prior year.....	106,536,388	98,101,803
2. Cost of bonds and stocks acquired.....	15,158,147	38,535,655
3. Accrual of discount.....	7,652	31,805
4. Unrealized valuation increase (decrease).....	(831,816)	(816,874)
5. Total gain (loss) on disposals.....	2,063,754	160,109
6. Deduct consideration for bonds and stocks disposed of.....	11,387,549	28,958,157
7. Deduct amortization of premium.....	124,403	518,801
8. Total foreign exchange change in book/adjusted carrying value.....		
9. Deduct current year's other-than-temporary impairment recognized.....		
10. Total investment income recognized as a result of prepayment penalties and/or acceleration fees.....		1,828
11. Book/adjusted carrying value at end of current period (Lines 1+2+3+4+5-6-7+8-9+10).....	111,422,153	106,536,388
12. Deduct total nonadmitted amounts.....		
13. Statement value at end of current period (Line 11 minus Line 12).....	111,422,153	106,536,388

Schedule for March 31, 2019 of the **Capitol Specialty Insurance Corporation**

SCHEDULE D - PART 1B

Showing the Acquisitions, Dispositions and Non-Trading Activity

During the Current Quarter for all Bonds and Preferred Stock by NAIC Designation

	1	2	3	4	5	6	7	8
NAIC Designation	Book/Adjusted Carrying Value Beginning of Current Quarter	Acquisitions During Current Quarter	Dispositions During Current Quarter	Non-Trading Activity During Current Quarter	Book/Adjusted Carrying Value End of First Quarter	Book/Adjusted Carrying Value End of Second Quarter	Book/Adjusted Carrying Value End of Third Quarter	Book/Adjusted Carrying Value December 31 Prior Year
BONDS								
1. NAIC 1 (a)	83,863,209	13,660,720	3,861,669	738,698	94,431,698			83,863,209
2. NAIC 2 (a)	8,228,711	1,245,886	625	(865,448)	8,619,603			8,228,711
3. NAIC 3 (a)					0			
4. NAIC 4 (a)					0			
5. NAIC 5 (a)					0			
6. NAIC 6 (a)					0			
7. Total Bonds	92,092,920	14,906,606	3,861,294	(118,750)	104,051,601			92,092,920
PREFERRED STOCK								
8. NAIC 1					0			
9. NAIC 2					0			
10. NAIC 3					0			
11. NAIC 4					0			
12. NAIC 5					0			
13. NAIC 6					0			
14. Total Preferred Stock	0	0	0	0	0	0	0	0
15. Total Bonds and Preferred Stock	92,092,920	14,906,606	3,861,294	(118,750)	104,051,601			92,092,920

(a) Book/Adjusted Carrying Value column for the end of the current reporting period includes the following amount of short-term and cash equivalent bonds by NAIC designation: NAIC 1 \$ 0; NAIC 2 \$ 0; NAIC 3 \$ 0; NAIC 4 \$ 0; NAIC 5 \$ 0; NAIC 6 \$ 0.

**Sch. DA - Pt. 1
NONE**

**Sch. DA - Verification
NONE**

**Sch. DB - Pt. A - Verification
NONE**

**Sch. DB - Pt. B - Verification
NONE**

**Sch. DB - Pt. C - Sn. 1
NONE**

**Sch. DB - Pt. C - Sn. 2
NONE**

**Sch. DB - Verification
NONE**

SCHEDULE E - PART 2 - VERIFICATION

Cash Equivalents

	1 Year To Date	2 Prior Year Ended December 31
1. Book/adjusted carrying value, December 31 of prior year.....	4,858,328	3,532,216
2. Cost of cash equivalents acquired.....	16,644,147	34,800,502
3. Accrual of discount.....		14,795
4. Unrealized valuation increase (decrease).....		
5. Total gain (loss) on disposals.....		(46)
6. Deduct consideration received on disposals.....	18,141,365	33,489,139
7. Deduct amortization of premium.....		
8. Total foreign exchange change in book/ adjusted carrying value.....		
9. Deduct current year's other-than-temporary impairment recognized.....		
10. Book/adjusted carrying value at end of current period (Lines 1+2+3+4+5-6-7+8-9).....	3,361,110	4,858,328
11. Deduct total nonadmitted amounts.....		
12. Statement value at end of current period (Line 10 minus Line 11).....	3,361,110	4,858,328

**Sch. A Pt. 2
NONE**

**Sch. A Pt. 3
NONE**

**Sch. B - Pt. 2
NONE**

**Sch. B - Pt. 3
NONE**

**Sch. BA - Pt. 2
NONE**

**Sch. BA - Pt. 3
NONE**

QE01, QE02, QE03

Schedule for March 31, 2019 of the **Capitol Specialty Insurance Corporation**

SCHEDULE D - PART 3

Showing all Long-Term Bonds and Stocks ACQUIRED During Current Quarter

1	2	3	4	5	6	7	8	9	10
CUSIP Identification	Description	Rating	Date Acquired	Name of Vendor	Number of Shares of Stock	Acad Cost	Per Year	Per \$ of Account Interest and Dividend	MAC Designation and Administrative Symbol (When Applicable)
Bonds - U.S. Government									
912828 3Y 4	UNITED STATES TREASURY NOTE		01/22/2019	MORGAN STANLEY & CO.		488,148	500,000	4.806	
912828 4C 1	UNITED STATES TREASURY NOTE		02/20/2019	RBC CAPITAL MARKETS		488,486	500,000	4.792	
02069998	Total - U.S. Government					976,634	1,000,000	4.851	XXX
Bonds - U.S. States, Territories and Possessions									
2077X AG 4	CONNECTICUT ST.		01/22/2019	MORGAN STANLEY & CO.		565,779	570,000	4.00	
17938R ON 8	MASSACHUSETTS ST.		02/15/2019	WELLS FARGO		297,708	290,000	4.792	
17938R	Total - U.S. States, Territories & Possessions					863,487	860,000	4.352	XXX
Bonds - U.S. Public Subdivisions of States									
11507 2H 1	REARWARD CITY FL SCH DIST		03/15/2019	FTN FINANCIAL SECURITIES CORP.		290,000	290,000	1.250	
36068 LV 4	GRAND LODGE IN PUBLIC SCH DIST		02/16/2019	HALLTOP SECURITIES		378,717	325,000	FE	
36068 LX 0	GRAND LODGE IN PUBLIC SCH DIST		02/16/2019	HALLTOP SECURITIES		204,670	200,000	FE	
3198998	Total - U.S. Public Subdivisions of States					873,387	815,000	FE	XXX
Bonds - U.S. Special Revenue and Special Assessment									
31409 VC 7	FEDERAL HOME LN MTG CORP #20151		01/14/2019	WELLS FARGO FINANCIAL		477,863	475,170	4.83	
31409 RO 6	FEDERAL NATIONAL MTG ASSOC #14089A		01/22/2019	GOLDMAN SACHS		1,448,000	1,445,028	5.19	
3140A CH 6	FEDERAL NATIONAL MTG ASSOC #14089A		02/20/2019	WELLS FARGO FINANCIAL		1,827,718	1,822,135	5.10	
6487X CZ 3	JORDAN VALLEY WATER CONSERVATION DIST		03/14/2019	HALLTOP SECURITIES		263,496	260,000	5.799	
71763 J 7	PHILADELPHIA WATER & WASTE WATER		02/16/2019	BBBT CAPITAL MARKETS		264,148	260,000	1.667	
7823R XP 3	RHODE ISLAND ST 1962 & 1972 FPN		02/20/2019	FTN FINANCIAL SECURITIES CORP.		243,750	250,000	3.329	
3198998	Total - U.S. Special Revenue and Special Assessment					3,817,937	3,802,331	4.517	XXX
Bonds - International and Miscellaneous									
0688E AH 6	BANK OF AMERICA CAPITAL LLC		02/20/2019	PARIBAS CORPORATION		251,279	250,000	3.115	
08403 BF 3	BANK OF AMERICA CAPITAL LLC		03/12/2019	MORGAN STANLEY & CO.		1,029,918	1,000,000	3.51	
23306 AL 5	DO MASTER FINANCE LLC 19-A A2		02/20/2019	GUGGENHEIM CAPITAL MARKETS		500,000	500,000	FE	
20440 AH 7	DUKE ENERGY PROGRESS LLC		03/04/2019	BARCLAYS CAPITAL		497,940	500,000	FE	
69270 CT 4	MET LIFE GLOBAL FUNDING		02/01/2019	WELLS FARGO FINANCIAL		406,460	500,000	1.200	
69207 AR 6	MORNINGSTAR INTERNATIONAL		03/14/2019	DEUTSCHE BANK		745,065	750,000	FE	
71701 BB 8	PFIZER INC.		03/04/2019	BARCLAYS CAPITAL		248,873	250,000	FE	
74338 AC 2	PROGRESS REIDENTIAL TRUST 19-8FR1 B		02/14/2019	GOLDMAN SACHS		748,864	750,000	FE	
81747M AA 7	BEQUONA MORTGAGE TRUST 99-CH1 A1		02/16/2019	WELLS FARGO FINANCIAL		2,027,851	2,000,000	4.750	
8828K AA 0	STOCK INFRASTRUCTURE BRUBER LL 19-A A2		02/16/2019	GUGGENHEIM CAPITAL MARKETS		748,877	750,000	FE	
9145H HV 5	US BANCORP		01/28/2019	US BANCORP		398,266	500,000	FE	
94000J 2D 4	WELLS FARGO COMPANY		01/16/2019	WELLS FARGO FINANCIAL		8,217,254	400,000	11.398	XXX
39899A	Total - International and Miscellaneous					14,923,089	14,927,331	4.372	XXX
919897	Total - Bonds - Part 3					14,923,089	14,927,331	4.372	XXX
Common Stocks - International and Miscellaneous									
287391 70 2	DELTA AIR LINES INC.		03/12/2019	MORGAN STANLEY & CO.		107,268	XXX	XXX	
963969 10 2	THE HERSHEY COMPANY		02/27/2019	VARIOUS		251,460	XXX	XXX	
90899A	Total - Common Stocks - International and Miscellaneous					251,460	XXX	XXX	
979897	Total - Common Stocks - Part 3					251,460	XXX	XXX	

Submitter March 31, 2019 of the **Capitol Specialty Insurance Corporation**

SCHEDULE D - PART 3
Showing all Long-Term Bonds and Stocks ACQUIRED During Current Quarter

1	2	3	4	5	6	7	8	9	10
Code Identification	Description	Rating	Date Acquired	Name of Vendor	Number of Shares of Stock	Actual Cost	Per Value	Paid for Assess of Interest and Dividend	MAC Designation and Administrative Expenses (if any) (b) (1)
070000	Total - Common Stocks					231,460	XXX		XXX
080000	Total - Preferred and Common Stocks					231,460	XXX		XXX
090000	Total - Bonds, Preferred and Common Stocks					15,158,140	XXX	-4,372	XXX

(b) For all common stock bearing MAC, make/indicate "X" provide the number of such issues.

Schedule March 31, 2019 of the **Capitol Specialty Insurance Corporation**

SCHEDULE D - PART 4

Showing all Long-Term Bonds and Stocks Sold, REDEEMED or Otherwise DISPOSED OF During Current Quarter

CUSIP Identification	Description	Disposal Date	Name of Purchaser	Number of Shares of Stock	Consideration	Per Value	Actual Cost	Prior Year Book/Adjusted Carrying Value	Unrealized Valuation Increase (Decrease) / Accretion	Current Year's Temporary Impairment Recognized	Total Change in B.A.C.V. (11+12-13)	Total Foreign Exchange Change in B.A.C.V. Disposal Date	Book/Adjusted Carrying Value at Disposal Date	Foreign Exchange Gain (Loss) on Disposal	Realized Gain (Loss) on Disposal	Total Gain (Loss) on Disposal	Bond Interest / Stock Dividends Received During Year	Maturity Date	MAC Designation and Administrative Symbol/Market Indicator (e)
31937 TL 3	GOVERNMENT NATL MTG ASSOC II	03/01/2019	PAYDOWN		38,753	38,753	41,267	38,753	(10)	(10)	(10)	38,753	38,753	0	0	0	340	06/20/2046	IFE
026998	Total - Bonds - U.S. Government				38,753	38,753	41,267	38,753	(10)	(10)	(10)	38,753	38,753	0	0	0	340		XXX
009482 SK 8	ADAMS & ARAPHOE CHITS CO JT S	03/07/2019	JEFFERIES & COMPANY INC.		296,945	290,000	301,285	293,280	(693)	(693)	(693)	292,287	292,287	0	3,048	3,048	3,048	0	IFE
193330 MR 6	CALIFORNIA ST HLTH FACS FNG A...	03/12/2019	PAYDOWN		602,595	500,000	500,000	593,091	(2,022)	(2,022)	(2,022)	591,068	591,068	0	11,437	11,437	11,437	0	IFE
817144 SC 1	CLARK CITY WA SCH DIST 737VA...	03/12/2019	DAVIDSON		302,800	290,000	303,195	298,014	(1,006)	(1,006)	(1,006)	297,006	297,006	0	5,824	5,824	5,824	0	IFE
97137 HG 4	WACO CITY TX AZ ELEM SCH DIST...	03/12/2019	HUTCHINSON SHOOLEY		370,085	320,000	311,574	370,538	(1,333)	(1,333)	(1,333)	368,203	368,203	0	9,882	9,882	9,882	0	IFE
814121 WC 1	MONTGOMERY INDEP SCH DIST...	03/12/2019	RAINFREZ & CO INC		1,564,465	1,320,000	1,394,644	1,564,801	(5,200)	(5,200)	(5,200)	1,548,574	1,548,574	0	30,891	30,891	30,891	0	IFE
249998	Total - Bonds - U.S. Federal Subdivisions of States				1,564,465	1,320,000	1,394,644	1,564,801	(5,200)	(5,200)	(5,200)	1,548,574	1,548,574	0	30,891	30,891	30,891	0	XXX
027860 NP 5	AMERICAN INTL PWR-CHD INC OR...	03/12/2019	US BANCORP PFER JAFFRAY...		304,688	250,000	304,475	298,832	(61)	(61)	(61)	298,571	298,571	0	6,028	6,028	6,028	0	IFE
130330 MR 6	CALIFORNIA ST HLTH FACS FNG A...	03/12/2019	WELLS FARGO MORGAN...		213,373	230,000	300,083	298,164	(696)	(696)	(696)	297,179	297,179	0	16,197	16,197	16,197	0	IFE
312925 BA 2	FEDERAL HOME LN MTO CORP JT23	03/07/2019	PAYDOWN		14,071	14,071	14,071	14,071	(20)	(20)	(20)	14,071	14,071	0	0	0	0	0	IFE
312945 BA 2	FEDERAL HOME LN MTO CORP A0713	03/07/2019	PAYDOWN		21,407	21,407	21,407	21,407	(9)	(9)	(9)	21,407	21,407	0	0	0	0	0	IFE
313022 NU 8	FEDERAL HOME LN MTO CORP C0332	03/07/2019	PAYDOWN		14,069	14,069	14,069	14,069	(8)	(8)	(8)	14,069	14,069	0	0	0	0	0	IFE
313020 GS 1	FEDERAL HOME LN MTO CORP C0147	03/07/2019	PAYDOWN		21,810	21,810	22,822	21,810	(10)	(10)	(10)	21,810	21,810	0	0	0	0	0	IFE
313035 VC 7	FEDERAL HOME LN MTO CORP G1611	03/07/2019	PAYDOWN		5,212	5,212	5,212	5,212	(10)	(10)	(10)	5,212	5,212	0	0	0	0	0	IFE
313789 BX 7	RFCM MULTIFAMILY STRUCTURED P	02/28/2019	PAYDOWN		34,179	34,179	34,179	34,179	0	0	0	34,179	34,179	0	0	0	0	0	IFE
313911 NH 4	FEDERAL NATLNL MTO ASSOC	03/07/2019	PAYDOWN		15,286	15,286	15,286	15,286	0	0	0	15,286	15,286	0	0	0	0	0	IFE
313908 ZF 9	PANNE MAE 10 92 FA...	03/26/2019	PAYDOWN		4,548	4,548	4,548	4,548	0	0	0	4,548	4,548	0	0	0	0	0	IFE
314019 RO 8	FEDERAL NATLNL MTO ASSOC	03/07/2019	PAYDOWN		3,787	3,787	3,787	3,787	0	0	0	3,787	3,787	0	0	0	0	0	IFE
314009 HW 9	FEDERAL NATLNL MTO ASSOC	03/07/2019	PAYDOWN		10,287	10,287	10,287	10,287	(9)	(9)	(9)	10,287	10,287	0	0	0	0	0	IFE
31418C BE 0	FEDERAL NATLNL MTO ASSOC	03/07/2019	PAYDOWN		40,932	40,932	41,455	40,932	(2)	(2)	(2)	40,932	40,932	0	0	0	0	0	IFE
600395 KB 0	NEW YORK ST URBAN DEVY CORP REV	03/15/2019	MATURITY		310,000	310,000	311,755	310,000	(289)	(289)	(289)	310,000	310,000	0	0	0	0	0	IFE
13788C DH 5	SOUTH DAKOTA HSG DEV AUTH...	02/27/2019	BANK FUND PAYMENT		5,000	5,000	5,000	5,000	(2)	(2)	(2)	5,000	5,000	0	0	0	0	0	IFE
319998	Total - Bonds - U.S. Special Revenue and Special Assessments				1,119,778	1,000,807	1,117,814	1,090,831	(2,27)	(2,27)	(2,27)	1,097,554	1,097,554	0	22,223	22,223	22,223	0	XXX
002873 AB 9 A	BKTRUST 18-BXCL	03/15/2019	PAYDOWN		7,613	7,613	7,613	7,613	13	13	13	7,613	7,613	0	0	0	0	0	IFE
12435W AC 5	CAPITAL AUTOMOTIVE TRST 17-A-A2	04/15/2019	PAYDOWN		2,118	2,118	2,118	2,118	42	42	42	2,118	2,118	0	0	0	0	0	IFE
12478R AE 7	CREDIT SUISSE MORTGAGE TRUST OF	03/15/2019	PAYDOWN		1,248	1,248	1,248	1,248	2	2	2	1,248	1,248	0	0	0	0	0	IFE
12584A AJ 5 2 2 A1	DOMINOS PEZZA MASTER SUBERLL	03/07/2019	PAYDOWN		21	21	21	21	0	0	0	21	21	0	0	0	0	0	IFE
25265T AG 5 17-A-A2	CONNECTICUT AVENUE SECURITIES	03/26/2019	PAYDOWN		893	893	893	893	16	16	16	893	893	0	0	0	0	0	IFE
26419P AA 2 A	CONNECTICUT AVENUE SECURITIES	03/26/2019	PAYDOWN		893	893	893	893	16	16	16	893	893	0	0	0	0	0	IFE
30711C CX 8 18-C0E 2M1	CONNECTICUT AVENUE SECURITIES	03/26/2019	PAYDOWN		31,100	31,100	31,100	31,100	0	0	0	31,100	31,100	0	0	0	0	0	IFE
002873 AB 9 A	BKTRUST 18-BXCL	03/15/2019	PAYDOWN		7,613	7,613	7,613	7,613	13	13	13	7,613	7,613	0	0	0	0	0	IFE
12435W AC 5	CAPITAL AUTOMOTIVE TRST 17-A-A2	04/15/2019	PAYDOWN		2,118	2,118	2,118	2,118	42	42	42	2,118	2,118	0	0	0	0	0	IFE
12478R AE 7	CREDIT SUISSE MORTGAGE TRUST OF	03/15/2019	PAYDOWN		1,248	1,248	1,248	1,248	2	2	2	1,248	1,248	0	0	0	0	0	IFE
12584A AJ 5 2 2 A1	DOMINOS PEZZA MASTER SUBERLL	03/07/2019	PAYDOWN		21	21	21	21	0	0	0	21	21	0	0	0	0	0	IFE
25265T AG 5 17-A-A2	CONNECTICUT AVENUE SECURITIES	03/26/2019	PAYDOWN		893	893	893	893	16	16	16	893	893	0	0	0	0	0	IFE
26419P AA 2 A	CONNECTICUT AVENUE SECURITIES	03/26/2019	PAYDOWN		893	893	893	893	16	16	16	893	893	0	0	0	0	0	IFE
30711C CX 8 18-C0E 2M1	CONNECTICUT AVENUE SECURITIES	03/26/2019	PAYDOWN		31,100	31,100	31,100	31,100	0	0	0	31,100	31,100	0	0	0	0	0	IFE

SCHEDULE D - PART 4

Showing all Long-Term Bonds and Stocks SOLD, REDEEMED or Otherwise DISPOSED OF During Current Quarter

CUSIP Identification	Description	3 F o r e i g n	4 D e p o s i t D a t e	5 N a m e o f P a r t i c i p a n t	6 N u m b e r o f S h a r e s	7 C o n s i d e r a t i o n	8 P e r V a l u e	9 A d d i t i o n A m o u n t	10 P r i o r Y e a r B o o k V a l u e C a r r y i n g	11 U n r e l i m i n e d V a l u e I n c r e a s e /	12 C u r r e n t Y e a r's A m o r t i z a t i o n /	13 C u r r e n t Y e a r's T e m p o r a r y I m p a i r m e n t R e c o g n i z e d	14 T o t a l C h a n g e i n B .A. C. V. B i n F o r e i g n	15 T o t a l F o r e i g n E x c h a n g e i n B .A. C. V. B i n F o r e i g n	16 B o o k V a l u e C a r r y i n g D i s p o s e d	17 F o r e i g n E x c h a n g e G a i n (L o s s)	18 R e a l i z e d G a i n (L o s s) o n D i s p o s e	19 T o t a l G a i n (L o s s) o n D i s p o s e	20 B o o k V a l u e D u r i n g Y e a r	21 S t o c k S e l e c t i o n C o n t r i b u t i o n M a j o r i t y D a t e	22 N A C D e s c r i p t i o n S y m b o l M a j o r i t y I n d e x I n d i c a t o r		
3071X 1	CONNECTICUT AVENUE SECURITIES 10 COS 3M1		03/26/2019	PAVDOWN		-10,887	10,887	-10,887															
3071X 1S	CONNECTICUT AVENUE SECURITIES 17-COM 2M1		03/26/2019	PAVDOWN		-42,891	42,891	-42,891															
5534L AA 0	LARRADER ANTON FINANCE LTD 16-1A A1		03/15/2019	PAVDOWN		7,813	7,813	7,813															
5534L AA 4	MW OWNER TRUST 16-1A A1		03/20/2019	PAVDOWN		20,080	20,080	20,080															
5534L AA 7	MEDTRONIC INC		03/15/2019	TENDER OFFER		-28,196	28,196	-28,196															
5534L BD 7	MEDTRONIC INC		03/15/2019	TENDER OFFER		-254,181	254,181	-254,181															
5816B AA 9	MELIFE SECURITIZATION TRUST 17-1A A1		03/07/2019	PAVDOWN		12,423	12,423	12,423															
6439C AA 7	NEW RESIDENTIAL MORTGAGE LOAN 16-2A A1		03/07/2019	PAVDOWN		9,303	9,303	9,303															
8174D AU 4	SECURIA MORTGAGE TRUST 17-4 A18		03/07/2019	PAVDOWN		1,954	1,954	1,954															
8174F AU 9	SECURIA MORTGAGE TRUST 17-4 A18		03/07/2019	PAVDOWN		5,800	5,800	5,800															
8174D AU 5	SECURIA MORTGAGE TRUST 16-2 A18		03/07/2019	PAVDOWN		3,463	3,463	3,463															
8174D AU 6	SECURIA MORTGAGE TRUST 16-4 A18		03/07/2019	PAVDOWN		14,027	14,027	14,027															
8177M AA 7	SECURIA MORTGAGE TRUST 16-0 C1		03/07/2019	PAVDOWN		51,193	51,193	51,193															
8252Y AA 2	SERRA RECREABLES FUNDING CO 16-3A A1		03/20/2019	PAVDOWN		13,655	13,655	13,655															
8417N AA 0	SPRINKLE FUNDING TRUST 16-AAA 1		03/16/2019	PAVDOWN		110,714	110,714	110,714															
8523K AA 0	STACK MANUFACTURE RUBER LL 16-1A A2		03/26/2019	PAVDOWN		625	625	625															
8728X AA 1	TPO REAL ESTATE FINANCE 16-1A 1		03/16/2019	PAVDOWN		474,972	474,972	474,972															
8822U AL 3	TRACHER PARK CLO 16-1A A1		01/24/2019	PAVDOWN		13,887	13,887	13,887															
88065 AA 9	THUNDERBOLT AIRCRAFT LEASE LM 16-1A A		03/16/2019	PAVDOWN		8,829	8,829	8,829															
8817E AA 8	TOMCO MORTGAGE TRUST 16-1 1		03/07/2019	PAVDOWN		24,810	24,810	24,810															
9211M AC 7	VANTAGE DATA CENTERS 16-1 1		03/15/2019	PAVDOWN		1,200	1,200	1,200															
7452D AA 4	WATSON LIMITED 12-1 A		03/15/2019	PAVDOWN		4,971	4,971	4,971															
38998K	Total - Bonds - Industrial and Miscellaneous					1,950,948	1,950,948	1,950,948															
38998L	Total - Bonds - Part 4					3,919,249	3,919,249	3,919,249															
38999K	Total - Bonds					3,850,042	3,850,042	3,850,042															
0915R 10	ARR PRODUCTS & CHEMICALS INC		01/31/2019	WARDUS	900,000	151,677	151,677	151,677															
09179K 30	ALPHABET INC - CL A		01/31/2019	WARDUS	1,100,000	1,262,054	1,262,054	1,262,054															
02315L 5	AMAZON.COM INC.		01/31/2019	WARDUS	100,000	81,115	81,115	81,115															
004070 2	BERKSHIRE HATHAWAY INC CL B		01/31/2019	WARDUS	1,800,000	297,623	297,623	297,623															
125523 10	CB&I CORP		02/28/2019	WARDUS	4,872,000	938,340	938,340	938,340															

Statement March 31, 2019 of the **Capitol Specialty Insurance Corporation**

SCHEDULE D - PART 4

Showing all Long-Term Bonds and Stocks SOLD, REDEEMED or Otherwise DISPOSED OF During Current Quarter

1	2	3	4	5	6	7	8	9	10	11	12	13	14	15	16	17	18	19	20	21	22
CUSIP Identification	Description	Disposal Date	Name of Purchaser	Number of Shares of Stock	Consideration	Per Value	Adj Cost	Prior Year Book/Adjusted Carrying Value	Unrealized Valuation Increase (Decrease) / Accretion	Current Year's Temporary Impairment Recognized	Total Change in B.A.C.V. (11-12-13)	Total Foreign Exchange Change in B.A.C.V.	Book/Adjusted Carrying Value at Disposal Date	Foreign Exchange Gain (Loss) on Disposal	Realized Gain (Loss) on Disposal	Total Gain (Loss) on Disposal	Bond Interest/Stock Dividends Received During Year	Shield Contractual Maturity	MAC Designation and Administrative Symbol		
128108 10 3	CSK CORP	07/22/2019	WARDUS	9,250,000	417,177	XXX	432,225	388,913	43,912	0	43,912	0	432,225	0	7,230	(15,046)	1,444	XXX	XXX		
203030 10 1	COMCAST CORP - CL A	01/31/2019	WARDUS	5,750,000	205,694	XXX	195,324	195,788	2,517	0	2,517	0	195,324	0	(124,248)	7,230	1,680	XXX	XXX		
217861 70 2	DELTA AIR LINES INC	01/31/2019	WARDUS	14,952,000	717,685	XXX	642,131	748,653	95,278	0	95,278	0	642,131	0	(124,248)	1,319	1,680	XXX	XXX		
24887 10 8	WALT DISNEY CONTR	03/08/2019	BARCLAYS CAPITAL	1,480,000	167,780	XXX	82,682	164,865	(1,704)	0	(1,704)	0	162,882	0	5,118	(10,512)	600	XXX	XXX		
48259 10 0	JPMORGAN CHASE & COMPANY	01/31/2019	WARDUS	760,000	73,677	XXX	65,369	73,215	13,154	0	13,154	0	65,369	0	(0,298)	(0,298)	0	XXX	XXX		
84218 10 4	MICROSOFT CORP	01/24/2019	WARDUS	3,528,000	365,125	XXX	374,411	358,339	16,072	0	16,072	0	374,411	0	(0,298)	(0,298)	0	XXX	XXX		
77698 10 6	ROPER INDUSTRIES INC	01/31/2019	WARDUS	2,234,000	891,760	XXX	429,551	358,339	(248,811)	0	(248,811)	0	429,551	0	265,230	265,230	1,086	XXX	XXX		
817665 10 4	INTERNATIONAL	01/31/2019	WARDUS	1,900,000	73,347	XXX	51,504	73,684	(24,960)	0	(24,960)	0	51,504	0	27,843	27,843	1,887	XXX	XXX		
835566 10 2	THERMO FISHER SCIENTIFIC INC	01/31/2019	WARDUS	1,120,000	252,887	XXX	261,000	250,846	10,365	0	10,365	0	261,000	0	1,887	1,887	1,100	XXX	XXX		
828300 60 9	YSA INC-CLASS A SHARES	01/24/2019	WARDUS	1,140,000	1,565,421	XXX	371,582	1,590,984	(1,187,603)	0	(1,187,603)	0	371,582	0	1,180,830	1,180,830	0	XXX	XXX		
008279 10 0	ARBUS SE - UNSP ADR	01/31/2019	WARDUS	4,520,000	714,171	XXX	19,642	105,196	19,642	0	19,642	0	19,642	0	(4,271)	(4,271)	0	XXX	XXX		
879697	Total - Common Stocks - Individual and Miscellaneous				7,467,512	XXX	5,672,593	7,298,877	(1,827,473)	0	(1,827,473)	0	5,672,593	0	1,968,010	1,968,010	5,787	XXX	XXX		
879698	Total - Common Stocks				7,467,512	XXX	5,672,593	7,298,877	(1,827,473)	0	(1,827,473)	0	5,672,593	0	1,968,010	1,968,010	5,787	XXX	XXX		
880288	Total - Preferred and Common Stocks				7,467,512	XXX	5,672,593	7,298,877	(1,827,473)	0	(1,827,473)	0	5,672,593	0	1,968,010	1,968,010	5,787	XXX	XXX		
880289	Total - Bonds, Preferred and Common Stocks				11,287,554	XXX	8,301,882	11,987,814	(1,827,473)	0	(1,827,473)	0	8,301,882	0	2,493,738	2,493,738	80,906	XXX	XXX		

(a) For all common stock bearing the MAC related indicator "U" provide the number of such issues: 1.

**Sch. DB - Pt. A - Sn. 1
NONE**

**Sch. DB - Pt. B - Sn. 1
NONE**

**Sch. DB - Pt. D - Sn. 1
NONE**

**Sch. DB - Pt. D - Sn. 2
NONE**

**Sch. DL - Pt. 1
NONE**

**Sch. DL - Pt. 2
NONE**

Statement for March 31, 2019 of the **Capitol Specialty Insurance Corporation**
SCHEDULE E - PART 1 - CASH

Month End Depository Balances

1 Depository	2 Code	3 Rate of Interest	4 Amount of Interest Received During Current Quarter	5 Amount of Interest Accrued at Current Statement Date	6 Book Balance at End of Each Month During Current Quarter			8 -
					6 First Month	7 Second Month	8 Third Month	
Open Depositories								
JPMorgan Chase	Medison, WI				(188)	18,871		XXX
0198888	Total Open Depositories	XXX	XXX	.0	.0	(188)	18,871	.0 XXX
0308888	Total Cash on Deposit	XXX	XXX	.0	.0	(188)	18,871	.0 XXX
0508888	Total Cash	XXX	XXX	.0	.0	(188)	18,871	.0 XXX

Statement for March 31, 2019 of the **Capitol Specialty Insurance Corporation**

SCHEDULE E - PART 2 - CASH EQUIVALENTS

Show Investments Owned End of Current Quarter

1	2	3	4	5	6	7	8	9
CISSP	Description	Code	Date Acquired	Rate of Interest	Maturity Date	Book/Quoted (Carrying) Value	Amount of Interest Due & Accrued	Amount Received During Year
AI Other Money Market Mutual Funds								
3819W	3 GOLDMAN SACHS FUND GOVTFFS		03/14/2019	2.340		3,079,052		
48100	6 2 IPI ORGAN U.S. GOVERNMENT MONEY MARKET FUND - AGENCY SHARES		03/14/2019	2.270		345,058		
888888	Cash - AI Other Money Market Mutual Funds					3,391,110		
888888	Cash - Cash Equivalents					3,391,110		



SUPPLEMENT "A" TO SCHEDULE T
EXHIBIT OF MEDICAL PROFESSIONAL LIABILITY PREMIUMS WRITTEN
ALLOCATED BY STATES AND TERRITORIES

Designate the type of health care providers reported on this page.

Physicians - Including Surgeons and Osteopaths

States, Etc.	1 Direct Premiums Written	2 Direct Premiums Earned	Direct Losses Paid		5 Direct Losses Incurred	Direct Losses Unpaid		8 Direct Losses Incurred But Not Reported
			3 Amount	4 Number of Claims		6 Amount Reported	7 Number of Claims	
1. Alabama.....AL								
2. Alaska.....AK								
3. Arizona.....AZ								
4. Arkansas.....AR								
5. California.....CA								
6. Colorado.....CO								138
7. Connecticut.....CT								887
8. Delaware.....DE								
9. District of Columbia.....DC								
10. Florida.....FL								358
11. Georgia.....GA								
12. Hawaii.....HI								
13. Idaho.....ID								
14. Illinois.....IL								
15. Indiana.....IN								
16. Iowa.....IA								
17. Kansas.....KS								
18. Kentucky.....KY								
19. Louisiana.....LA								
20. Maine.....ME								
21. Maryland.....MD								
22. Massachusetts.....MA								
23. Michigan.....MI								435
24. Minnesota.....MN								
25. Mississippi.....MS								
26. Missouri.....MO								
27. Montana.....MT								
28. Nebraska.....NE								
29. Nevada.....NV								
30. New Hampshire.....NH					(96)			(58)
31. New Jersey.....NJ								221
32. New Mexico.....NM								
33. New York.....NY					6			282
34. North Carolina.....NC								
35. North Dakota.....ND								
36. Ohio.....OH								
37. Oklahoma.....OK								34,808
38. Oregon.....OR								
39. Pennsylvania.....PA								
40. Rhode Island.....RI								
41. South Carolina.....SC								
42. South Dakota.....SD								
43. Tennessee.....TN								
44. Texas.....TX								
45. Utah.....UT								
46. Vermont.....VT								
47. Virginia.....VA								
48. Washington.....WA								
49. West Virginia.....WV								
50. Wisconsin.....WI								
51. Wyoming.....WY								
52. American Samoa.....AS								
53. Guam.....GU								
54. Puerto Rico.....PR								
55. US Virgin Islands.....VI								
56. Northern Mariana Islands.....MP								
57. Canada.....CAN								
58. Aggregate Other Alien.....OT	0	0	0	0	0	0	0	0
59. Totals	0	0	0	0	(90)	0	0	37,073

DETAILS OF WRITE-INS

58001.....								
58002.....								
58003.....								
58999. Summary of remaining write-ins for Line 58 from overflow page.	0	0	0	0	0	0	0	0
58999. Totals (Lines 58001 thru 58003 + 58999) (Line 58 above)	0	0	0	0	0	0	0	0



Designate the type of health care providers reported on this page.

SUPPLEMENT "A" TO SCHEDULE T
EXHIBIT OF MEDICAL PROFESSIONAL LIABILITY PREMIUMS WRITTEN
ALLOCATED BY STATES AND TERRITORIES

Hospitals

States, Etc.	1 Direct Premiums Written	2 Direct Premiums Earned	Direct Losses Paid		5 Direct Losses Incurred	Direct Losses Unpaid		8 Direct Losses Incurred But Not Reported
			3 Amount	4 Number of Claims		6 Amount Reported	7 Number of Claims	
1. Alabama.....AL								
2. Alaska.....AK								
3. Arizona.....AZ								
4. Arkansas.....AR								
5. California.....CA								
6. Colorado.....CO								
7. Connecticut.....CT								15
8. Delaware.....DE								
9. District of Columbia.....DC								
10. Florida.....FL								1,169
11. Georgia.....GA								
12. Hawaii.....HI								
13. Idaho.....ID								
14. Illinois.....IL								
15. Indiana.....IN								
16. Iowa.....IA								
17. Kansas.....KS								
18. Kentucky.....KY								
19. Louisiana.....LA								2,542
20. Maine.....ME								
21. Maryland.....MD								
22. Massachusetts.....MA								
23. Michigan.....MI								
24. Minnesota.....MN								
25. Mississippi.....MS								
26. Missouri.....MO								
27. Montana.....MT								
28. Nebraska.....NE								
29. Nevada.....NV								
30. New Hampshire.....NH								
31. New Jersey.....NJ								
32. New Mexico.....NM								1,267
33. New York.....NY								
34. North Carolina.....NC					418			15,263
35. North Dakota.....ND								
36. Ohio.....OH								
37. Oklahoma.....OK								
38. Oregon.....OR								
39. Pennsylvania.....PA								
40. Rhode Island.....RI								
41. South Carolina.....SC								
42. South Dakota.....SD								
43. Tennessee.....TN								
44. Texas.....TX								
45. Utah.....UT								
46. Vermont.....VT								
47. Virginia.....VA								
48. Washington.....WA								
49. West Virginia.....WV								
50. Wisconsin.....WI								
51. Wyoming.....WY								
52. American Samoa.....AS								
53. Guam.....GU								
54. Puerto Rico.....PR								
55. US Virgin Islands.....VI								
56. Northern Mariana Islands.....MP								
57. Canada.....CAN								
58. Aggregate Other Alien.....OT	0	0	0	0	0	0	0	0
59. Totals	0	0	0	0	418	0	0	20,256

DETAILS OF WRITE-INS

58001.....								
58002.....								
58003.....								
58998. Summary of remaining write-ins for Line 58 from overflow page.	0	0	0	0	0	0	0	0
58999. Totals (Lines 58001 thru 58003 + 58998) (Line 58 above)	0	0	0	0	0	0	0	0



SUPPLEMENT "A" TO SCHEDULE T
EXHIBIT OF MEDICAL PROFESSIONAL LIABILITY PREMIUMS WRITTEN
ALLOCATED BY STATES AND TERRITORIES

Designate the type of health care providers reported on this page.

Other Health Care Professionals, Including Dentists, Chiropractors and Podiatrists

States, Etc.	1 Direct Premiums Written	2 Direct Premiums Earned	Direct Losses Paid		5 Direct Losses Incurred	Direct Losses Unpaid		8 Direct Losses Incurred But Not Reported
			3 Amount	4 Number of Claims		6 Amount Reported	7 Number of Claims	
1. Alabama.....AL								
2. Alaska.....AK								
3. Arizona.....AZ	208,888	156,469			(13,948)	55,000	2	452,051
4. Arkansas.....AR		148			361			427
5. California.....CA	68,513	71,017	50,000	2	26,784	205,000	2	205,175
6. Colorado.....CO	18,827	26,031			4,083			75,205
7. Connecticut.....CT	7,182	8,326			3,258			24,054
8. Delaware.....DE								
9. District of Columbia.....DC								
10. Florida.....FL	1,552	1,446			(832)			4,177
11. Georgia.....GA					(366)			
12. Hawaii.....HI		825			965			2,385
13. Idaho.....ID								
14. Illinois.....IL	700	426			(110)			1,230
15. Indiana.....IN								
16. Iowa.....IA								
17. Kansas.....KS								
18. Kentucky.....KY								
19. Louisiana.....LA		103			(17)			296
20. Maine.....ME		558			1,182			1,611
21. Maryland.....MD	3,057	1,833			1,292			5,296
22. Massachusetts.....MA		742			(271)			2,144
23. Michigan.....MI		339			(459)			980
24. Minnesota.....MN								
25. Mississippi.....MS								
26. Missouri.....MO								
27. Montana.....MT	14,463	9,653			(938)			27,888
28. Nebraska.....NE								
29. Nevada.....NV								
30. New Hampshire.....NH	10,254	7,186			1,164			20,760
31. New Jersey.....NJ	670	1,630			(364)			4,708
32. New Mexico.....NM								
33. New York.....NY	1,100	2,137			(562)			6,173
34. North Carolina.....NC		518			(176)			1,485
35. North Dakota.....ND								
36. Ohio.....OH								
37. Oklahoma.....OK								53,994
38. Oregon.....OR	94,015	113,588			24,298			328,165
39. Pennsylvania.....PA	1,126	428			16			1,236
40. Rhode Island.....RI		296			74			855
41. South Carolina.....SC	660	490			(320)			1,414
42. South Dakota.....SD								
43. Tennessee.....TN								
44. Texas.....TX	289	295			(128)			851
45. Utah.....UT	4,920	7,215			1,127			20,843
46. Vermont.....VT	2,070	1,300			2,359			3,755
47. Virginia.....VA	700	663			(191)			1,915
48. Washington.....WA	162,037	135,069			20,930			390,228
49. West Virginia.....WV								
50. Wisconsin.....WI								
51. Wyoming.....WY								
52. American Samoa.....AS								
53. Guam.....GU								
54. Puerto Rico.....PR								
55. US Virgin Islands.....VI								
56. Northern Mariana Islands.....MP								
57. Canada.....CAN								
58. Aggregate Other Alien.....OT	0	0	0	0	0	0	0	0
59. Totals.....	601,023	548,731	50,000	2	69,251	280,000	4	1,638,309

DETAILS OF WRITE-INS

58001.....								
58002.....								
58003.....								
58998. Summary of remaining write-ins for Line 58 from overflow page.....	0	0	0	0	0	0	0	0
58999. Totals (Lines 58001 thru 58003 + 58998) (Line 58 above).....	0	0	0	0	0	0	0	0



SUPPLEMENT "A" TO SCHEDULE T
EXHIBIT OF MEDICAL PROFESSIONAL LIABILITY PREMIUMS WRITTEN
ALLOCATED BY STATES AND TERRITORIES

Designate the type of health care providers reported on this page.

Other Health Care Facilities

	1	2	Direct Losses Paid		5	Direct Losses Unpaid		8
			3	4		6	7	
States, Etc.	Direct Premiums Written	Direct Premiums Earned	Amount	Number of Claims	Direct Losses Incurred	Amount Reported	Number of Claims	Direct Losses Incurred But Not Reported
1. Alabama.....AL	54,174	137,377			79,163	215,000	4	396,892
2. Alaska.....AK		17,911			(10,368)			51,748
3. Arizona.....AZ	301,170	156,208	50,000	1	(384,579)	54,000	2	451,300
4. Arkansas.....AR	28,751	36,088			20,377			104,262
5. California.....CA	612,456	444,894	2,008,999	3	133,675	760,000	13	1,285,334
6. Colorado.....CO	17,992	32,601			(8,120)			94,225
7. Connecticut.....CT	24,267	82,903			(3,568)	52,500	2	239,512
8. Delaware.....DE	4,505	3,161			1,415			9,133
9. District of Columbia.....DC								
10. Florida.....FL	925,522	305,342			(70,986)	205,000	6	885,190
11. Georgia.....GA	210,490	250,801			892,149	1,365,000	6	724,585
12. Hawaii.....HI	13,554	3,509			(1,050)			10,192
13. Idaho.....ID	29,366	9,039			(1,471)			26,113
14. Illinois.....IL	57,305	65,461			2,613			189,136
15. Indiana.....IN	135,745	80,055			23,637	10,000	1	231,610
16. Iowa.....IA	41,518	13,240			22,424			38,252
17. Kansas.....KS		203,503			142,364			587,937
18. Kentucky.....KY	(1,679)	77,658	128,995	1	121,441	150,000	3	224,360
19. Louisiana.....LA	1,127,400	268,417	18,598	1	430,611	160,000	7	776,922
20. Maine.....ME		1,543			(1,364)			4,458
21. Maryland.....MD	124,772	121,701			42,511	105,000	3	351,942
22. Massachusetts.....MA	106,705	58,592	12,500	1	29,493	100,000	2	169,276
23. Michigan.....MI	79,621	97,999			21,116			283,758
24. Minnesota.....MN	71,154	30,586			51,590			88,374
25. Mississippi.....MS	45,400	53,258			(25,056)			153,867
26. Missouri.....MO	12,102	64,960			116,499	100,000	1	187,674
27. Montana.....MT		14,307			(2,596)			41,333
28. Nebraska.....NE		24,877			(7,747)			71,870
29. Nevada.....NV	10,448	34,658			11,310			100,130
30. New Hampshire.....NH	10,503	7,102			6,460			20,519
31. New Jersey.....NJ	254,685	195,890	12,000	1	(28,940)	170,000	9	585,943
32. New Mexico.....NM	18,154	33,463			1,345			96,724
33. New York.....NY	141,023	143,835			59,684	90,000	5	417,738
34. North Carolina.....NC	35,779	73,495			(85)	25,000	1	212,334
35. North Dakota.....ND	10,841	7,038			(194)			20,332
36. Ohio.....OH	136,959	242,850	75,000	1	(28,705)	875,000	3	701,612
37. Oklahoma.....OK	23,907	27,078			(19,366)			78,232
38. Oregon.....OR	17,319	18,604			(2,126)			53,748
39. Pennsylvania.....PA	243,352	123,425			(73,911)	317,500	4	356,584
40. Rhode Island.....RI	7,772	19,877			30,901			57,426
41. South Carolina.....SC	284,732	76,091			20,980	50,000	1	219,834
42. South Dakota.....SD								
43. Tennessee.....TN	53,876	52,954			1,803	285,000	2	153,015
44. Texas.....TX	508,398	479,253			(167,491)	197,500	6	1,392,733
45. Utah.....UT	96,950	19,943			33,414	150,000	1	57,740
46. Vermont.....VT								
47. Virginia.....VA	770,607	370,457	35,000	1	422,141	32,000	2	1,070,432
48. Washington.....WA	30,177	41,441			(12,678)			119,726
49. West Virginia.....WV	28,128	13,568			18,782	10,000	1	39,256
50. Wisconsin.....WI		589			264			1,702
51. Wyoming.....WY					(4,684)			
52. American Samoa.....AS								
53. Guam.....GU								
54. Puerto Rico.....PR								
55. US Virgin Islands.....VI								
56. Northern Mariana Islands.....MP								
57. Canada.....CAN								
58. Aggregate Other Alien.....OT	0	0	0	0	0	0	0	0
59. Totals	6,705,900	4,637,622	2,342,092	10	1,883,296	5,478,500	85	13,415,015

DETAILS OF WRITE-INS

58001.....								
58002.....								
58003.....								
58998. Summary of remaining write-ins for Line 58 from overflow page.	0	0	0	0	0	0	0	0
58999. Totals (Lines 58001 thru 58003 + 58998) (Line 58 above)	0	0	0	0	0	0	0	0

NONE



DIRECTOR AND OFFICER INSURANCE COVERAGE SUPPLEMENT

Year To Date For the Period Ended March 31, 2019

NAIC Group Code.....0501

NAIC Company Code.....10328

Company Name: Capitol Specialty Insurance Corporation

If the reporting entity writes any director and officer (D&O) business, please provide the following:

1. Monoline Policies

1 Direct Written Premiums	2 Direct Earned Premiums	3 Direct Losses Incurred
.....724,204706,440314,267

2. Commercial Multiple Peril (CMP) Packaged Policies

- 2.1 Does the reporting entity provide D&O liability coverage as part of a CMP packaged policy? Yes No
- 2.2 Can the direct premium earned for D&O liability coverage provided as part of a CMP packaged policy be quantified or estimated? Yes No
- 2.3 If the answer to question 2.2 is yes, provide the quantified or estimated direct premium earned amount for D&O liability coverage in CMP packaged policies:
- 2.31 Amount quantified: \$.....57
- 2.32 Amount estimated using reasonable assumptions:
- 2.4 If the answer to question 2.1 is yes, provide direct losses incurred (losses paid plus change in case reserves) for the D&O liability coverages provided in CMP packaged policies: