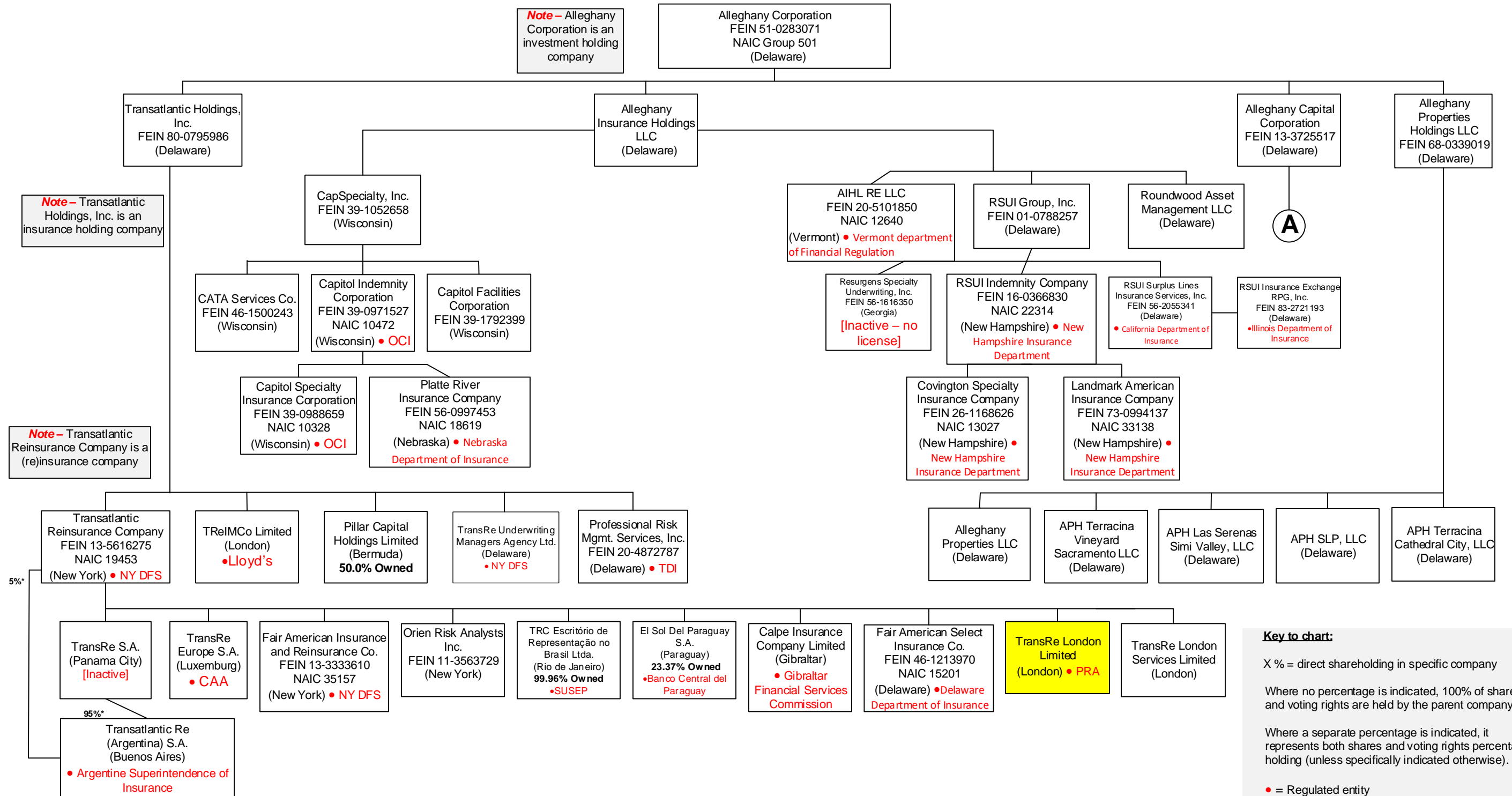


PRE-MERGER ORGANIZATIONAL CHART – ALLEGHANY CORPORATE GROUP



Note – Transatlantic Holdings, Inc. is an insurance holding company

Note – Transatlantic Reinsurance Company is a (re)insurance company

Note – Alleghany Corporation is an investment holding company

A

Key to chart:

X % = direct shareholding in specific company

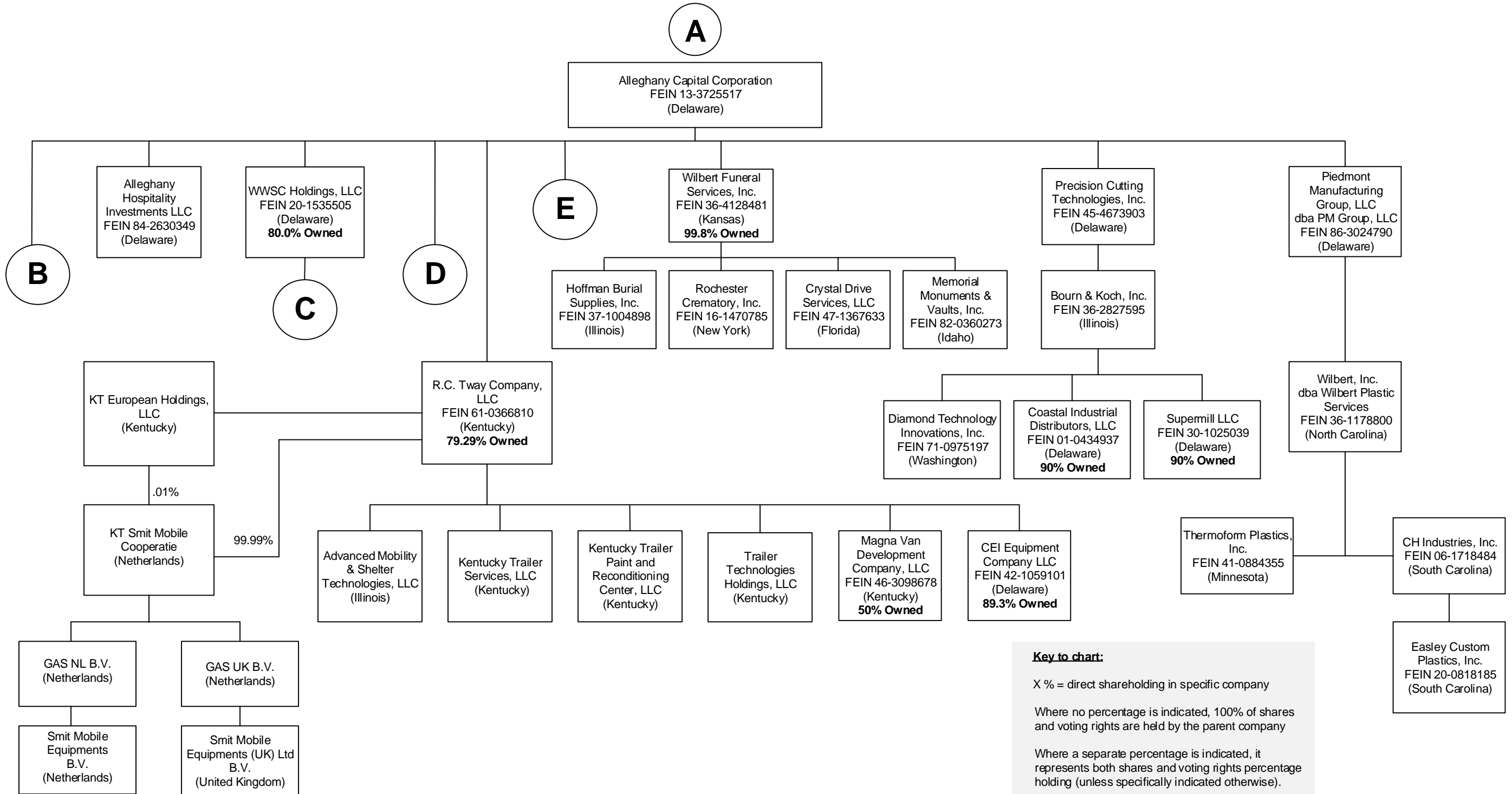
Where no percentage is indicated, 100% of shares and voting rights are held by the parent company

Where a separate percentage is indicated, it represents both shares and voting rights percentage holding (unless specifically indicated otherwise).

• = Regulated entity
CAA = Name of regulator

NOTE: The organizational chart does not include inactive subsidiaries.

PRE-MERGER ORGANIZATIONAL CHART – ALLEGHANY CORPORATE GROUP



Key to chart:

X % = direct shareholding in specific company

Where no percentage is indicated, 100% of shares and voting rights are held by the parent company

Where a separate percentage is indicated, it represents both shares and voting rights percentage holding (unless specifically indicated otherwise).

• = Regulated entity

NOTE: The organizational chart does not include inactive subsidiaries.

PRE-MERGER ORGANIZATIONAL CHART – ALLEGHANY CORPORATE GROUP

B

Alleghany Capital Corporation
(Delaware)

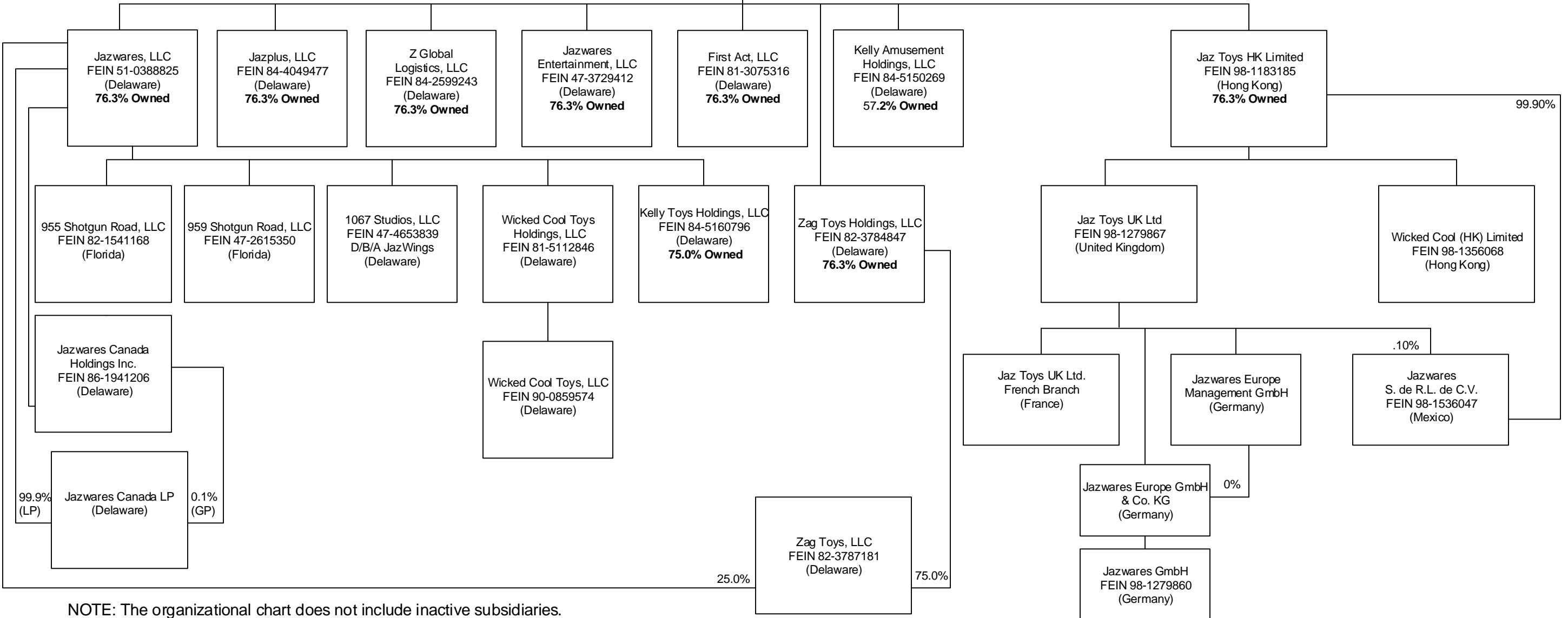
Key to chart:

X % = direct shareholding in specific company

Where no percentage is indicated, 100% of shares and voting rights are held by the parent company

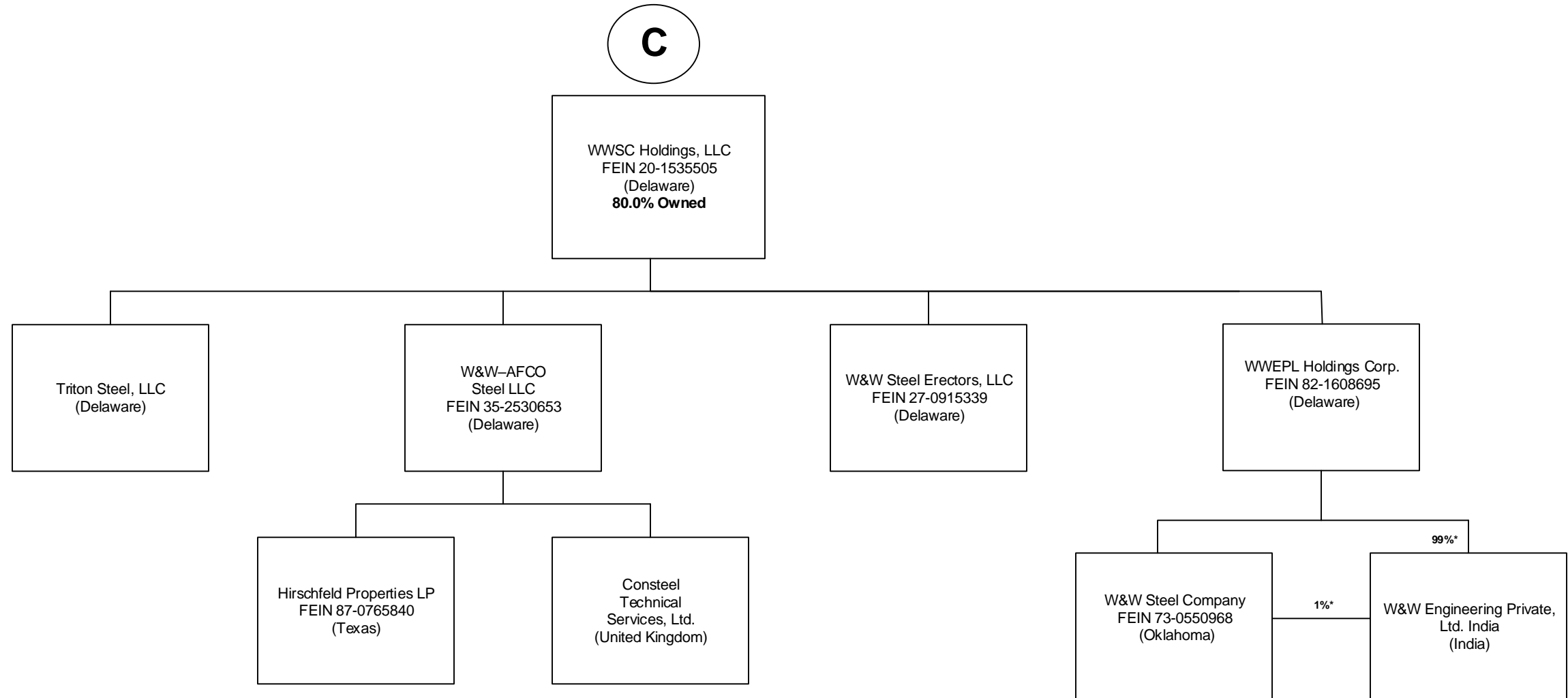
Where a separate percentage is indicated, it represents both shares and voting rights percentage holding (unless specifically indicated otherwise).

• = Regulated entity



NOTE: The organizational chart does not include inactive subsidiaries.

PRE-MERGER ORGANIZATIONAL CHART – ALLEGHANY CORPORATE GROUP



Key to chart:

X % = direct shareholding in specific company

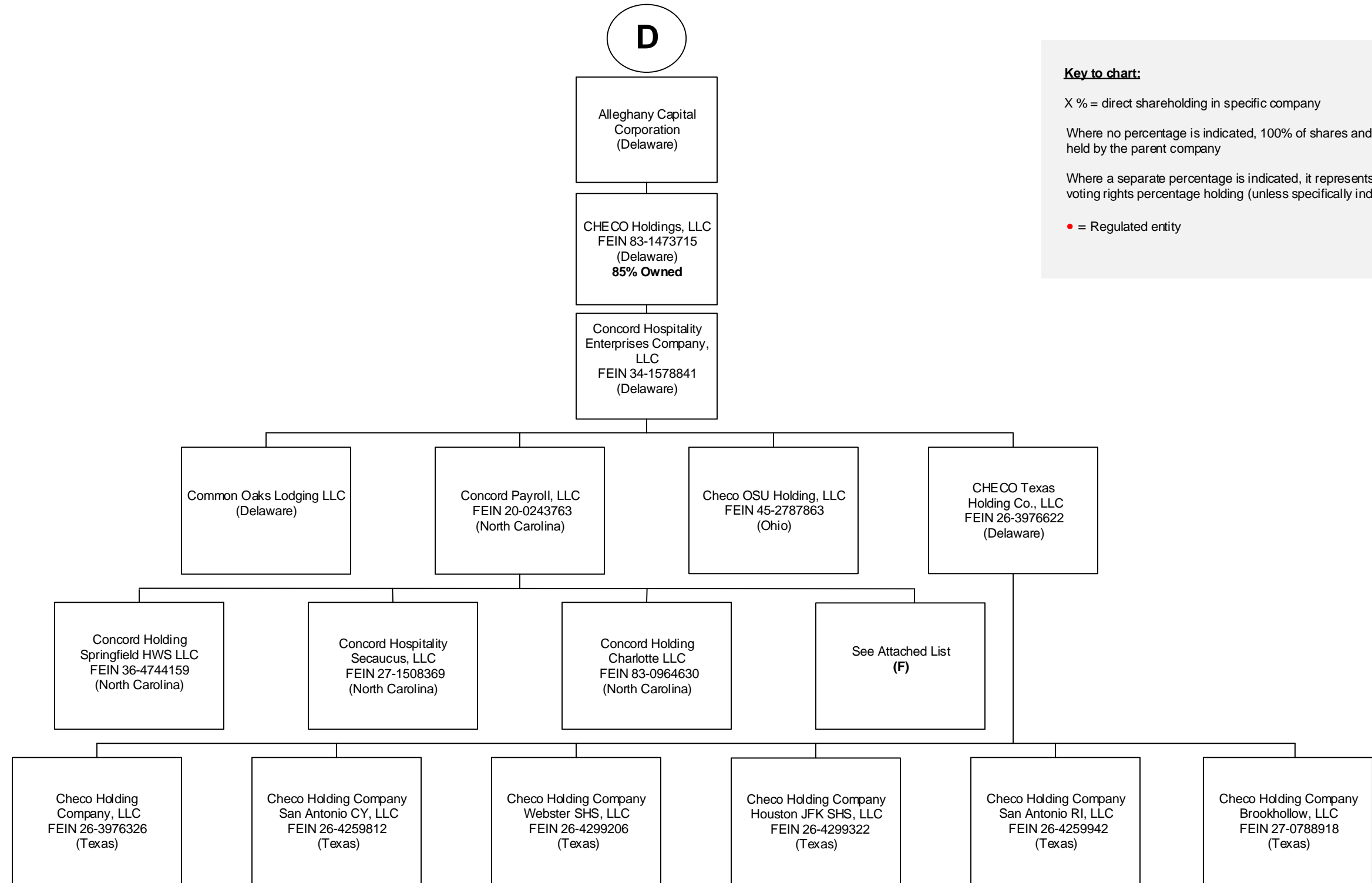
Where no percentage is indicated, 100% of shares and voting rights are held by the parent company

Where a separate percentage is indicated, it represents both shares and voting rights percentage holding (unless specifically indicated otherwise).

• = Regulated entity

NOTE: The organizational chart does not include inactive subsidiaries.

PRE-MERGER ORGANIZATIONAL CHART – ALLEGHANY CORPORATE GROUP



Key to chart:

X % = direct shareholding in specific company

Where no percentage is indicated, 100% of shares and voting rights are held by the parent company

Where a separate percentage is indicated, it represents both shares and voting rights percentage holding (unless specifically indicated otherwise).

• = Regulated entity

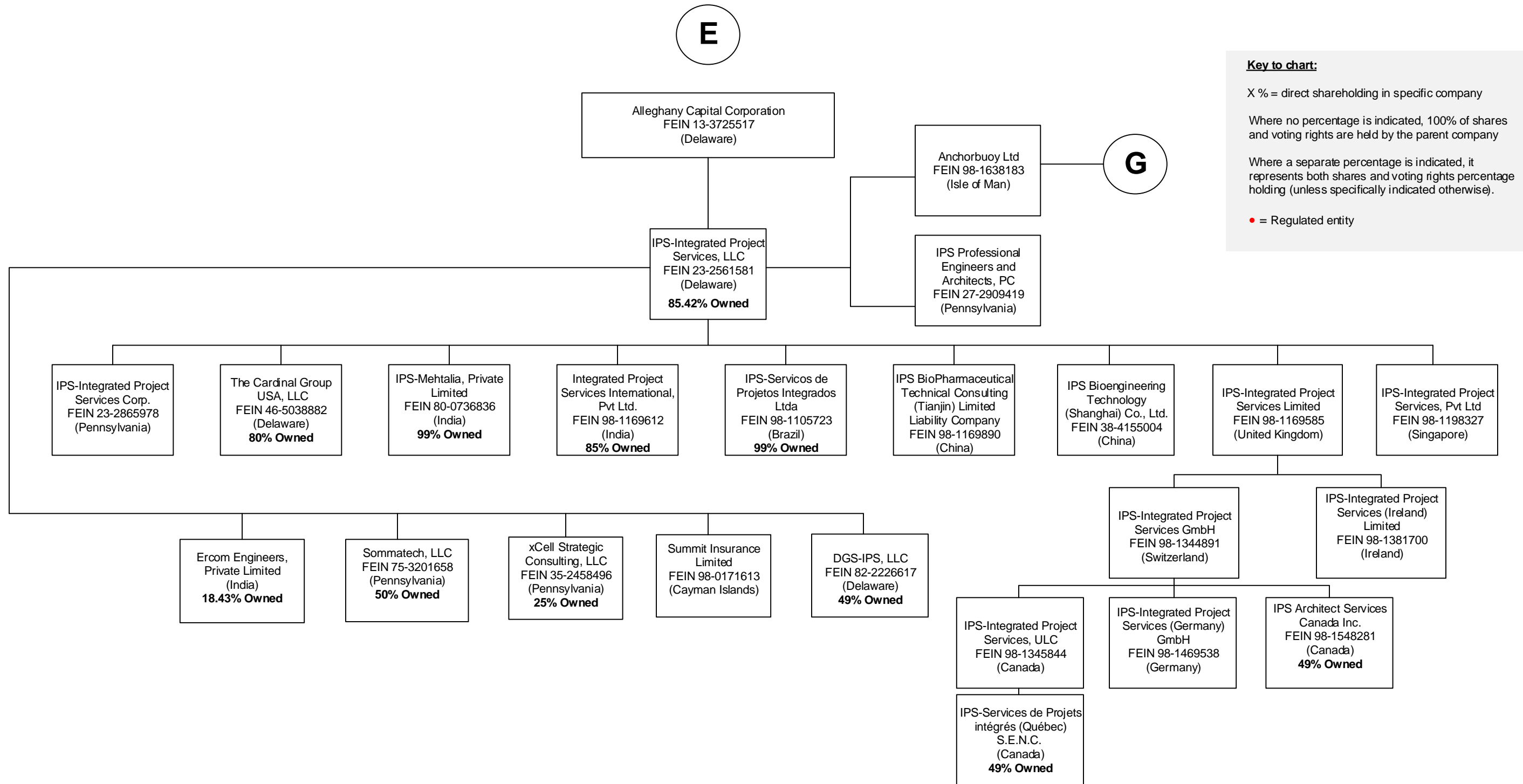
NOTE: The organizational chart does not include inactive subsidiaries.

**PRE-MERGER ORGANIZATIONAL CHART – ALLEGHANY CORPORATE GROUP
(F)**

Entity Name	Domiciliary Location	FEN
Concord Payroll - Brighton Cy II LLC	NC	82-1594805
Concord Payroll - Cb Philly, LLC	NC	81-4520701
Concord Payroll - Dhp LLC	NC	47-5316979
Concord Payroll - Gainesville, LLC	NC	81-5069295
Concord Payroll - Grand Rapids LLC	NC	47-3186597
Concord Payroll - Hh Raleigh LLC	NC	47-3640596
Concord Payroll - Hi Airport LLC	NC	81-1952318
Concord Payroll - Hi Universal LLC	NC	81-1953129
Concord Payroll - Hplv LLC	NC	47-5340347
Concord Payroll - Lake Nona LLC	NC	47-2703377
Concord Payroll - Lakewood LLC	NC	47-4753820
Concord Payroll - Lansing Cy, LLC	NC	80-0962007
Concord Payroll - Midtown LI LLC	NC	47-4453635
Concord Payroll - Novi Ren, LLC	NC	80-0960179
Concord Payroll - NY 28th, LLC	NC	37-1714781
Concord Payroll - Port Washington LLC	NC	81-2524641
Concord Payroll - Savannah LI LLC	NC	47-4453359
Concord Payroll - TBDHotel 36, LLC	NC	38-3890890
Concord Payroll - TBDHotel 39, LLC	NC	37-1711792
Concord Payroll - TBDHotel 40, LLC	NC	35-2466174
Concord Payroll - TBDHotel 42, LLC	NC	37-1711788
Concord Payroll - TBDHotel 43, LLC	NC	36-4752394
Concord Payroll - TDBHotel XIX, LLC	NC	27-2807806
Concord Payroll Am A LLC	NC	82-1939461
Concord Payroll Am E LLC	NC	82-1939505
Concord Payroll Cyh II, LLC	NC	82-0785304
Concord Payroll EB, LLC	NC	27-0717601
Concord Payroll Edina LLC	MN	82-5451765
Concord Payroll Jacksonville LLC	FL	82-5390928
Concord Payroll LV LLC	NC	82-1994827
Concord Payroll Moon, LLC	NC	38-3900211
Concord Payroll Nyc 46th LLC	NC	81-3794986
Concord Payroll RLJ, LLC	NC	27-0717647
Concord Payroll Wharf One, LLC	NC	81-4110892
Concord Payroll Wharf Two, LLC	NC	82-0630900
Concord Payroll-Arlington LLC	NC	35-2495458
CP San Diego Hotel Circle LLC	CA	84-4006470
CP Johns Creek LLC	NC	83-3632990
CP HIX Idrive LLC	NC	83-3724093
CP TP Idrive LLC	NC	83-3715074
CP Atlanta DT LLC	NC	84-2641833
CP Clearwater 2019 LLC	FL	84-2023636
CP Southlake LLC	NC	84-3364917
CP San Antonio CY LLC	NC	84-3776730
CP Salt Lake City LLC	NC	84-4187650
CP Biscayne Aventura LLC	NC	84-4895429
CP Perimeter ATL LLC	NC	84-5072248
CP Camden LLC	NC	85-0817318
CP MC Jacksonville LLC	NC	85-1628417
CP Lansing DT LLC	NC	85-2545926
CP Carlstadt LLC	NC	85-2694625
CP Westshore LLC	NC	85-2694396
CP Northbrook LLC	NC	85-2940835
CP Washington Park LLC	NC	85-3323322
CP Dadeland LLC	NC	85-3906858
CP Columbus PS LLC	NC	
CP Capital AR LLC	NC	86-2783629
CP Towne Center LLC	NC	86-2783704
CP Fort Mill LLC	NC	86-3160686
CP Navarre LLC	FL	86-3927679
CP Greenw ich LLC	NC	87-2233094
Concord CY Markham Payroll ULC	CAN	81-3269933
Concord CY Vaughan Payroll ULC	CAN	80-9481245
Concord Payroll Ottawa, Inc.	CAN	72-8736513
Concord RI Mississauga Payroll ULC	CAN	80-9480247
Cp Sic W Douglas LLC	NC	87-3371979
Cp Durham W Main LLC	NC	87-3839842
Cp Triangle Tc Cy LLC	NC	87-3839962
Cp Litz LLC	NC	87-3934355
Cp Indiantown LLC	NC	87-4181055
Cp Pb Lakes LLC	NC	87-4180790

Entity Name	Domiciliary Location	FEN
Concord Payroll-Charlotte Yorkmont, LLC	NC	36-4770989
Concord Payroll-Cleveland 9th LLC	NC	30-0809196
Concord Payroll-Columbus Olentangy LLC	NC	36-4779256
Concord Payroll-Cumberland LLC	NC	37-1749579
Concord Payroll-Dayton LLC	NC	36-4778095
Concord Payroll-Glen Mills LLC	NC	81-2838486
Concord Payroll-Greensburg CY LLC	NC	38-3923605
Concord Payroll-Houston JFK LLC	NC	36-4777947
Concord Payroll-Neville LLC	NC	61-1730401
Concord Payroll-Raleigh Ren LLC	NC	38-3923240
Concord Payroll-Reading LLC	NC	37-1749634
Concord Payroll-Roanoke LLC	NC	61-1730018
Concord Payroll-Settlers CY LLC	NC	30-0809750
Concord Payroll-South Beach, LLC	NC	36-4793541
Concord Payroll-TBDHotel 26, LLC	NC	27-3293340
Concord Payroll-TBDHotel 30, LLC	NC	27-4545280
Concord Payroll-TBDHotel 31, LLC	NC	27-4545298
Concord Payroll-TBDHotel 32, LLC	NC	27-4545318
Concord Payroll-TBDHotel 34, LLC	NC	27-4545476
Concord Payroll-Washington CY LLC	NC	32-0433373
Concord Payroll-Waukegan LLC	NC	36-4778717
CP Atlanta Midtown, LLC	NC	82-3369805
Cp Battlecreek LLC	NC	83-1678169
CP Beaufort LLC	NC	82-3966707
CP Broomfield LLC	NC	82-4019462
Cp Edison LI, LLC	NC	81-2728220
CP Houston CB LLC	TX	83-2329429
Cp Jersey City LI, LLC	NC	81-1670748
CP Loveland LLC	CO	83-2526210
Cp Maiden Lane LLC	NY	82-2659462
CP Milwaukee CB LLC	WI	82-2784272
CP New ark LLC	NC	82-3985105
CP Nulu LLC	NC	82-2784272
CP Secaucus LLC	NC	83-1131597
CP Surfside LLC	NC	83-2442267
CP Tuckahoe LLC	NY	83-2298107
CP Woburn LLC	NC	83-3753917
CP Georgia LN LLC	NC	83-3654111
CP Windy Hill LLC	NC	83-3688284
CP Horsham LLC	PA	83-4319310
CP Valley Forge LLC	NC	83-3843913
CP Hasbrouck LLC	NC	84-3053082
CP Nashville LLC	NC	84-3365284
CP Pittsburgh HW LLC	NC	84-3759768
CP San Antonio RI LLC	NC	84-3776978
CP 207th Aventura LLC	NC	84-4880082
CP Museum Way FW LLC	NC	84-4571401
CP DT Brickell LLC	FL	84-5038887
CP Tampa Midtown LLC	NC	85-1909866
CP Woodlands LLC	NC	85-1628417
CP Oakdale LLC	NC	85-2717673
CP Coronado Drive LLC	NC	85-2926669
CP East Shore Drive LLC	NC	85-2926437
CP Sawgrass LLC	NC	85-3229024
CLL Northbrook LLC	NC	85-3102543
CP Charlotte Ballantyne LLC	NC	85-4093928
CP Americas NYC LLC	NC	
CP Pooler LLC	NC	86-2813630
CP C West End LLC	NC	86-3748986
CP DC NJ AVE LLC	NC	87-1469538
CP West Palm Beach LLC	NC	87-2524280
Concord CY Mississauga Payroll ULC	CAN	80-9482045
Concord Payroll Edmonton CY, Inc.	CAN	83-4578718
Concord RI Markham Payroll ULC	CAN	80-9480445
Concord Calgary Payroll Inc.	CAN	78-0219101

PRE-MERGER ORGANIZATIONAL CHART – ALLEGHANY CORPORATE GROUP



Key to chart:

X % = direct shareholding in specific company

Where no percentage is indicated, 100% of shares and voting rights are held by the parent company

Where a separate percentage is indicated, it represents both shares and voting rights percentage holding (unless specifically indicated otherwise).

• = Regulated entity

NOTE: The organizational chart does not include inactive subsidiaries.

**PRE-MERGER ORGANIZATIONAL CHART – ALLEGHANY CORPORATE GROUP
(G)**

Entity Name	Domiciliary Location	FEIN
Amiston Linesight Limited	Bahrain	98-1638594
Amiston Linesight Limited (IE)	Ireland	98-1637861
Anchor GCC Ltd	Isle of Man	98-1640296
BS An Ghearmain GMBH	Germany	98-1640595
BS Denmark Aps	Denmark	98-1641258
BS Isiltir BV	Netherlands	98-1641587
Citiwide Consultants Limited	Hong Kong	98-1641714
Cuanbac Limited	Ireland	98-1642467
Cuanbac Ltd (NL)	Netherlands	98-1641864
Cuanbac Ltd (UK)	UK	98-1640994
Downbay Limited	UK	98-1641364
Forest Holdings Ltd	Isle of Man	98-1638590
Forest Investments	Isle of Man	98-1638585
Kiabay Unlimited Company	Ireland	98-1639401
Líne Radharc Limited	Ireland	98-1641965
Linesight AB	Sweden	
Linesight BV Belgium	Belgium	98-1642476
Linesight Chile SPA	Chile	98-1642275
Linesight Company Limited	Saudi Arabia	98-1641927
Linesight consulting Private Ltd	India	98-1641362
Linesight Consulting Shanghai Limited	China	98-1641376
Linesight DMCC	United Arab Emirates	98-1641871
Linesight Finland Oy	Finland	98-1641856
Linesight Inc	Canada	
Linesight Italy SRL	Italy	98-1641892
Linesight Limited	Israel	98-1638458
Linesight Consulting LLC	Delaware	82-4414027
Linesight Limited (IE)	Ireland	98-1640459
Linesight PTE. Limited Taiwan Branch (Singapore)	Taiwan (Republic of China)	98-1641883
Linesight PTE Limited	Singapore	98-1641600
Linesight S.A. DE C.V.	Mexico	
Linesight SAS ref France	France	98-1642441
Linesight Sdn. Bhd (Malaysia)	Malaysia	
Linesight Spain S.L.U	Spain	98-1639768
Maxamillion Limited	Isle of Man	98-1639811
Millfont Limited	Ireland	98-1640315
Murascaille Holdings BV	Netherlands	98-1640353
Netfont Unlimited	Ireland	98-1639774
Pine Holdings Ltd	Isle of Man	98-1640309
Planbay Limited	Ireland	98-1640952
Plug Holdings Unlimited	Isle of Man	98-1640155
Rolbay Unlimited Company	Ireland	98-1640608
Safabay Limited	Ireland	98-1638600
Shellbay Unlimited Company	Ireland	98-1640885
Tips	Isle of Man	98-1641620
Trenmor LLC	Delaware	38-3818109
Trenmor PTY Limited	Australia	98-1640965
Trenmor Unlimited Company	Ireland	98-1642178
Wozey S.A	Uruguay	