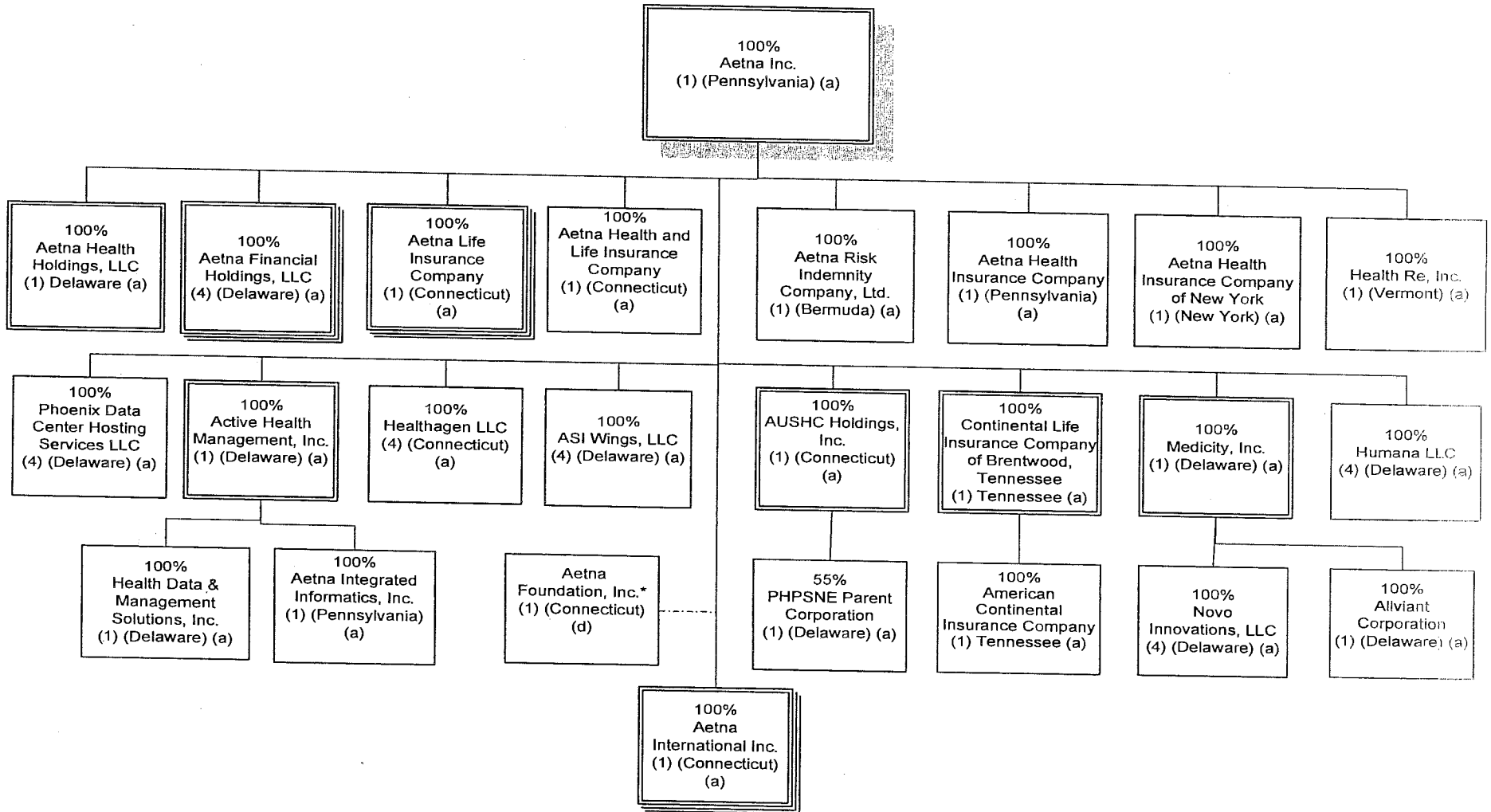


**Exhibit 4-B Pro Forma Organizational chart of Aetna and its affiliates
following the Transaction.**

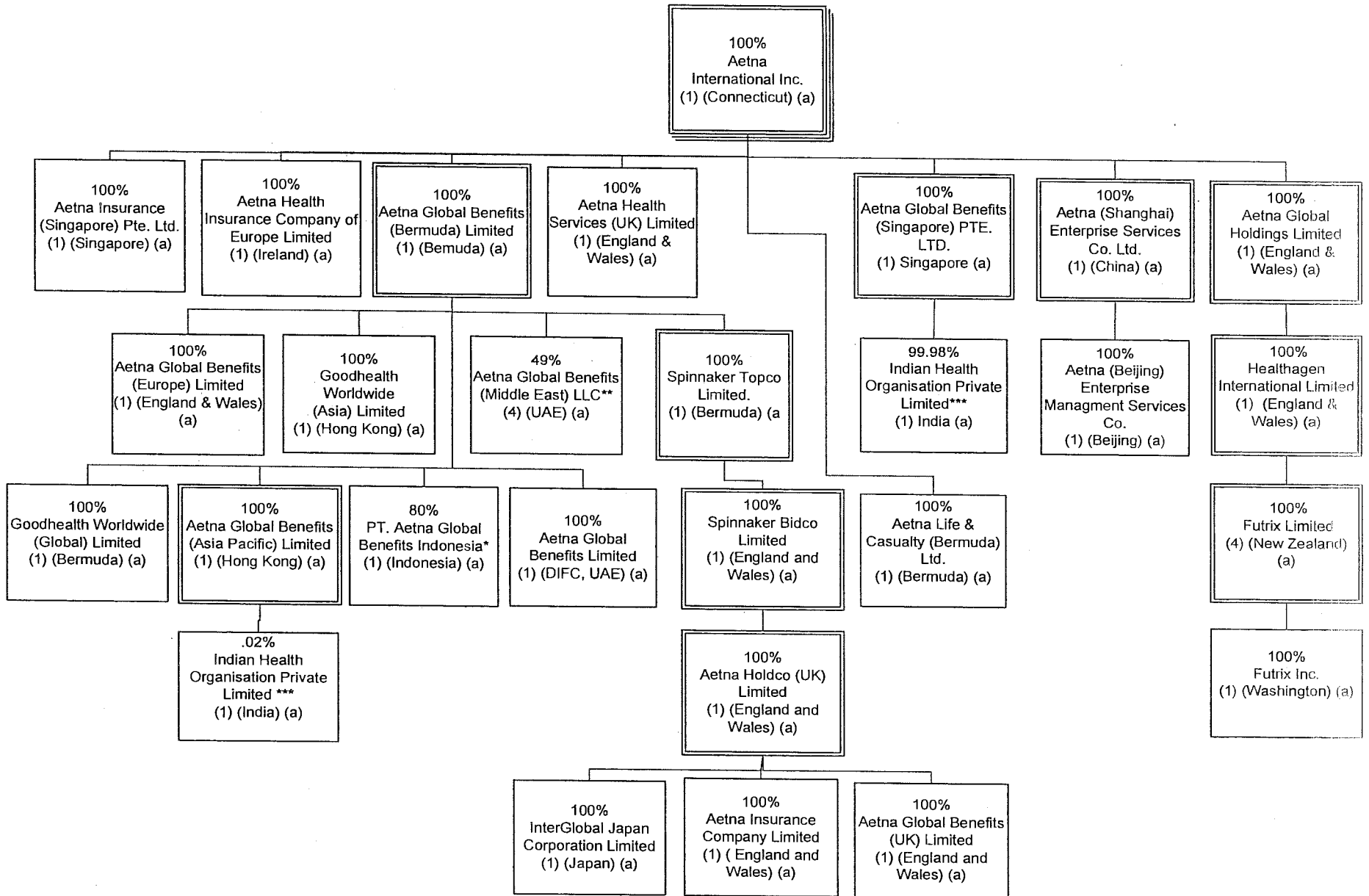
Aetna Inc.
Post-Closing organization Chart
Based on Information As of June 30, 2015



- | | |
|-------------------------------|--------------------------------------------------|
| (1) Corporation | (a) Consolidated |
| (2) Partnership | (b) One Line Consolidation (i.e., equity method) |
| (3) Joint Venture | (c) Separate Account Asset |
| (4) Limited Liability Company | (d) Not consolidated |
| (5) Trust | |

Percentages are rounded to nearest whole percent and are based on ownership of voting rights.

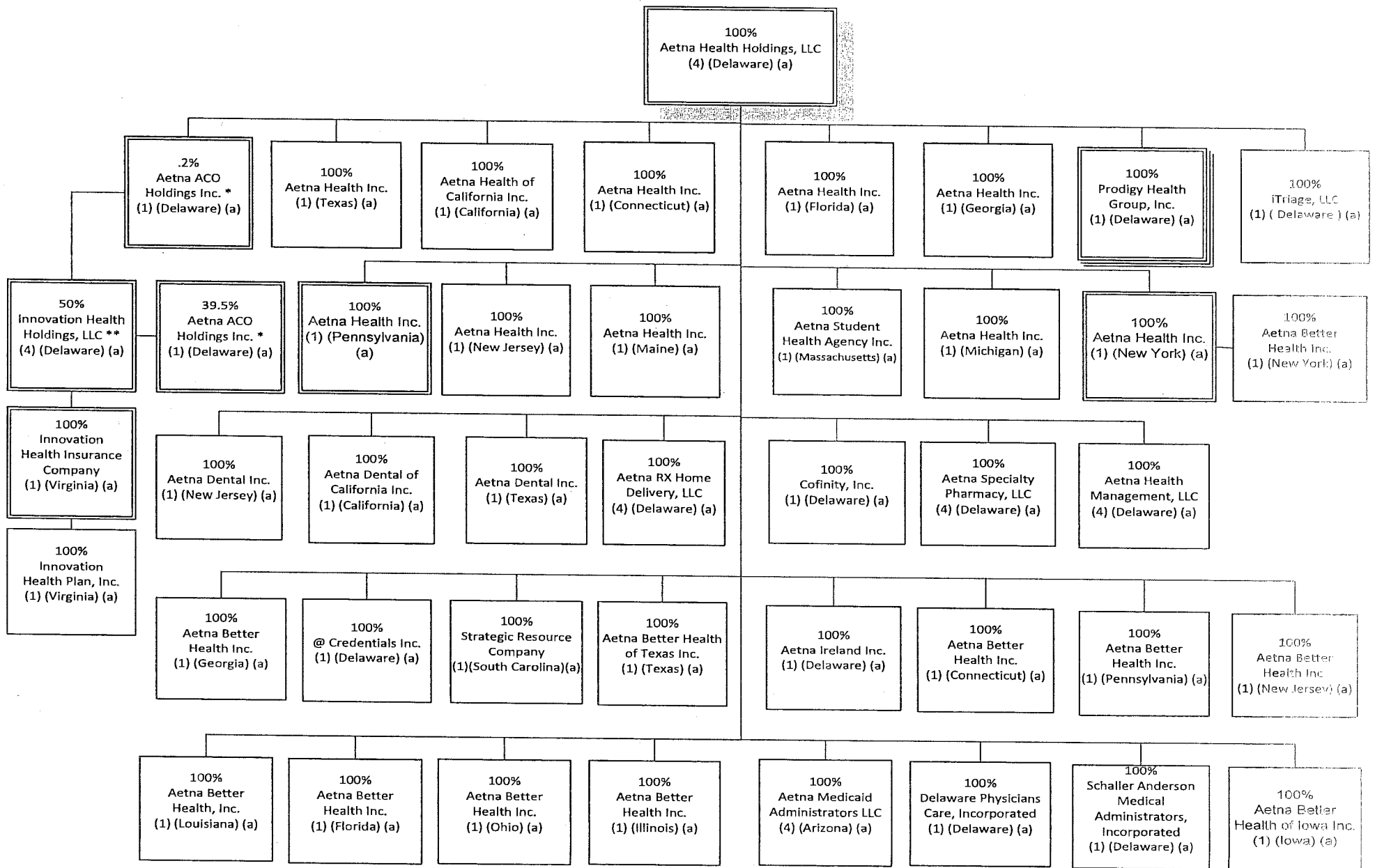
* Nonstock Corporation: Aetna does not control this entity. Stand-alone.



* 20% owned by Suhatsyah Rivai, Aetna's Nominee

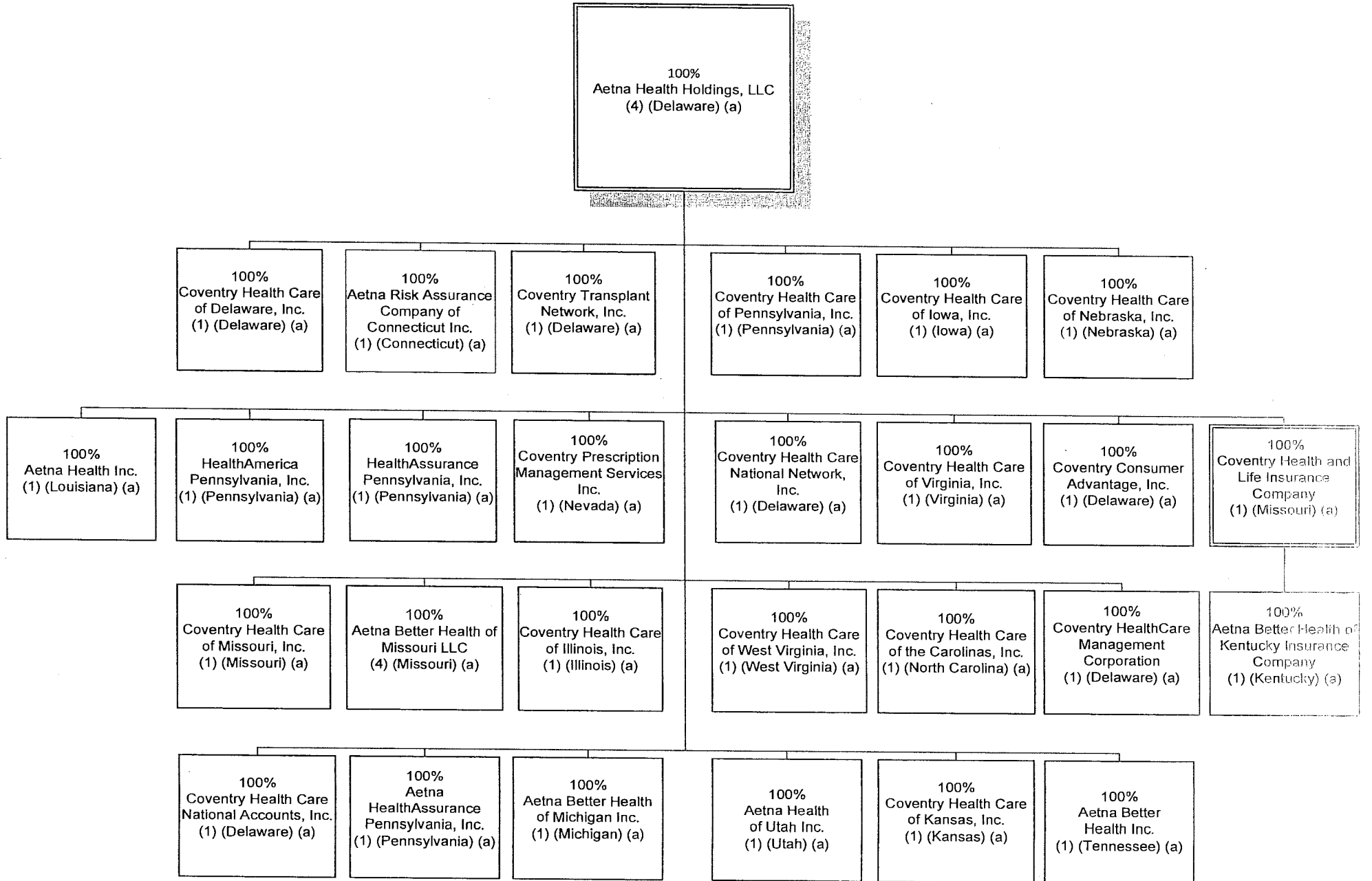
**51% owned by Euro Gulf LLC, Aetna's Nominee

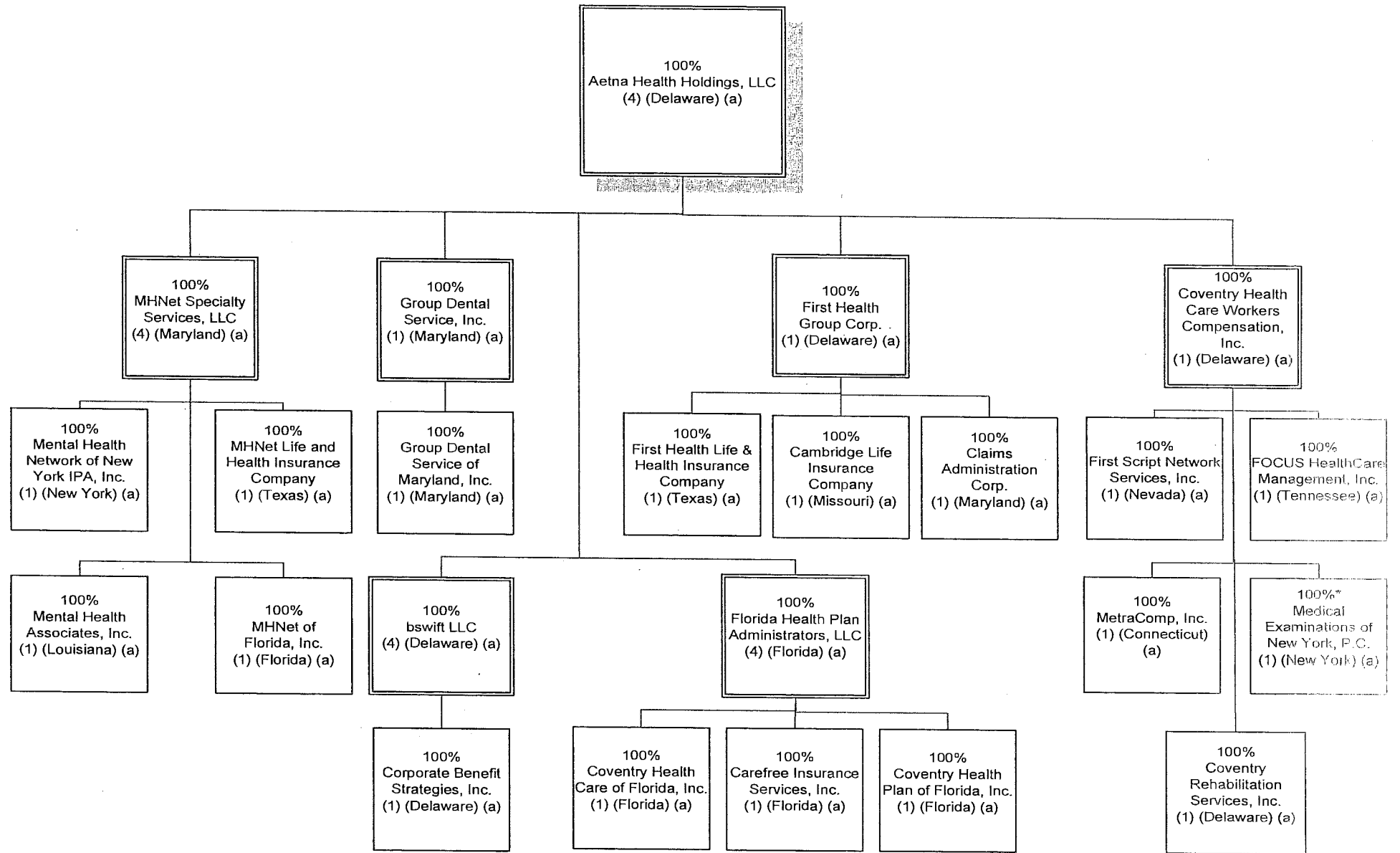
*** Aetna Global Benefits (Asia Pacific) owns 0.019857% of Indian Health Organisation Private Limited and Aetna Global Benefits (Singapore) owns 99.980143%



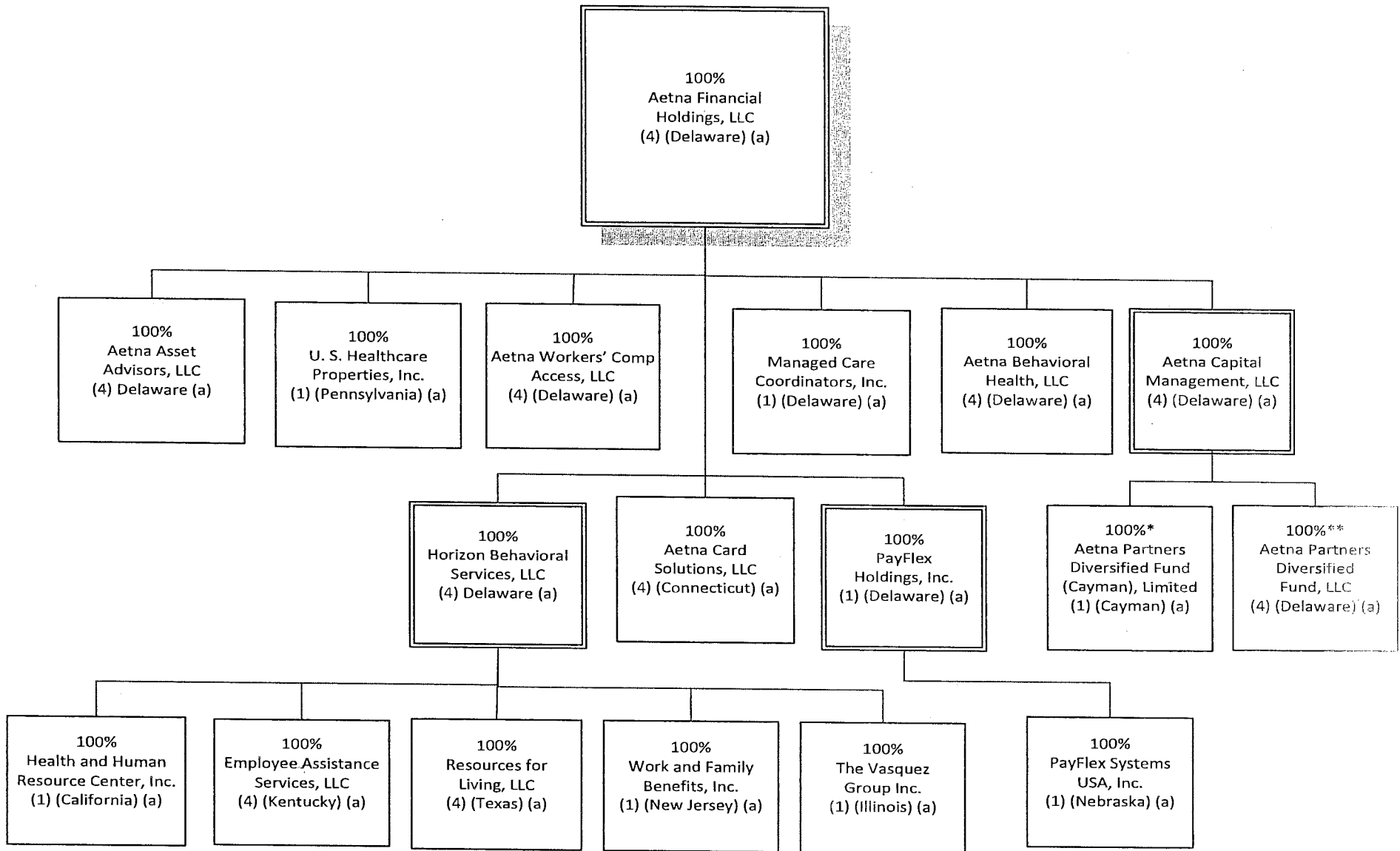
* Aetna ACO Holdings Inc. is owned by Aetna Life Insurance Company (302 shares); Aetna Health Inc. (PA) (198 shares); and Aetna Health Holdings, LLC (1 share).

** Innovation Health Holdings, LLC is 50% owned by Aetna ACO Holdings Inc. and 50% owned by Inova Health System Foundation



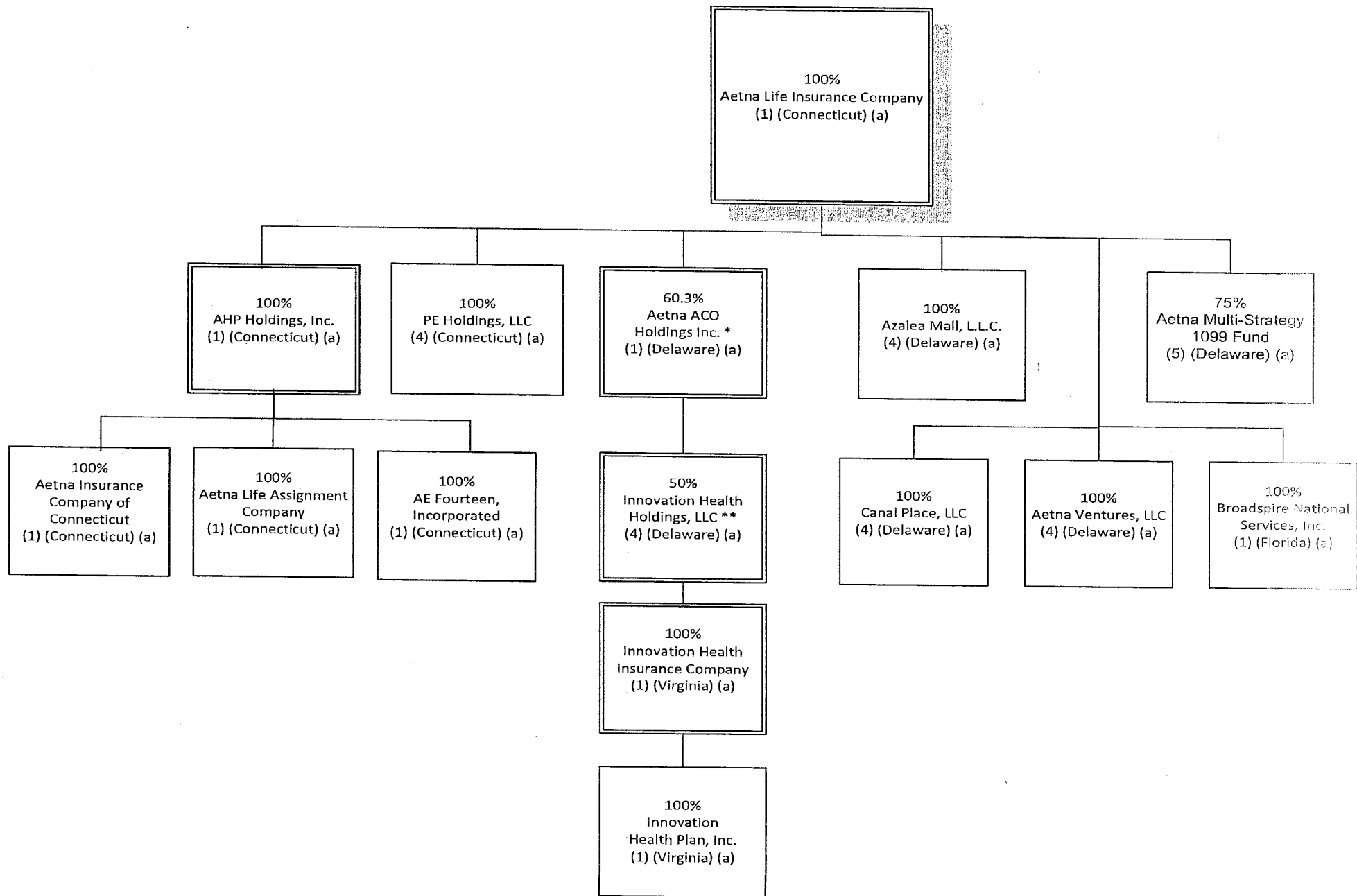


*100% owned through Aetna's Nominees

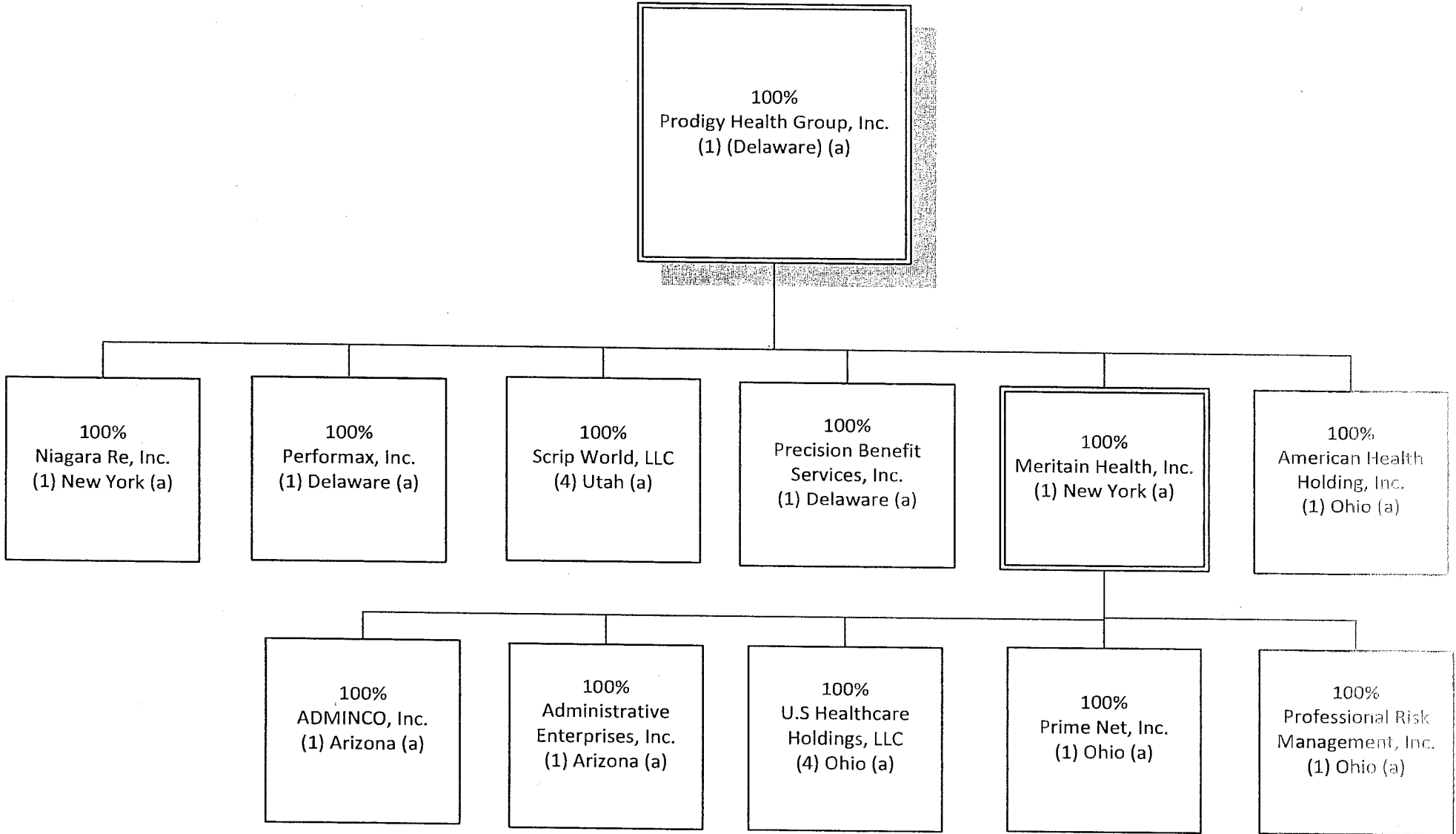


*Aetna Life Insurance Company owns the Class C participating shares of Aetna Partners Diversified Fund (Cayman), Limited.

** Aetna Life Insurance Company and Aetna Health and Life Insurance Company own substantially all of the non-managing member interests of Aetna Partners Diversified Fund, LLC.



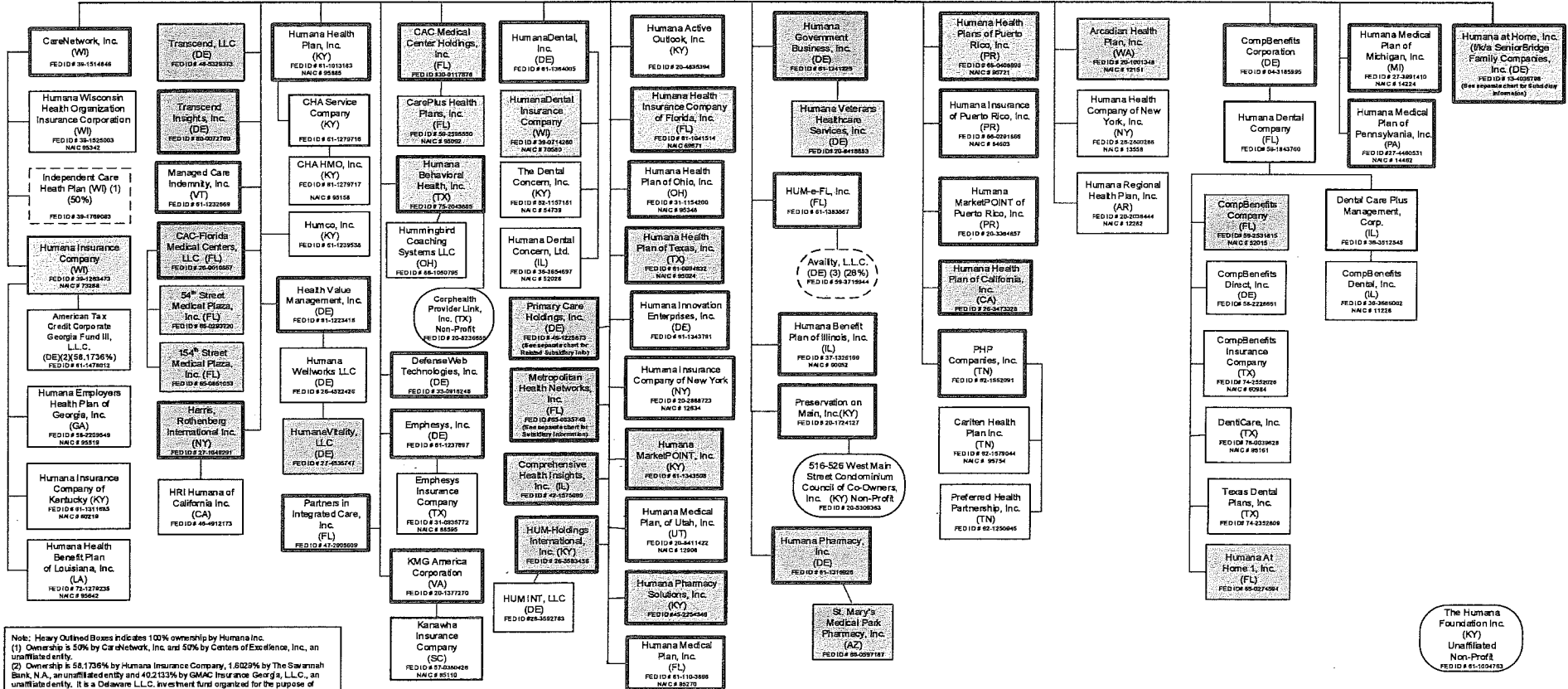
* Aetna ACO Holdings Inc. is owned by Aetna Life Insurance Company (302 shares); Aetna Health Inc. (PA) (198 shares); and Aetna Health Holdings, LLC (1 share).
 ** Innovation Health Holdings, LLC is 50% owned by Aetna ACO Holdings Inc. and 50% owned by Inova Health System Foundation



**Aetna Inc.
(PA)**

**Humana LLC
(DE)**

Blue boxes indicate companies with employees



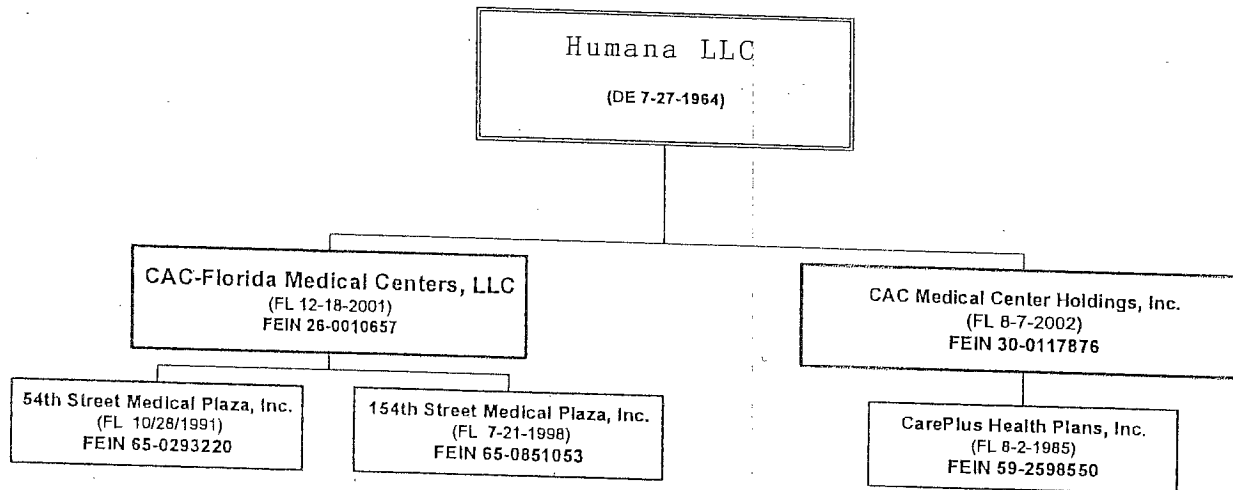
Notes: Heavy Outlined Boxes indicates 100% ownership by Humana Inc.
 (1) Ownership is 50% by CareNetwork, Inc. and 50% by Centers of Excellence, Inc., an unaffiliated entity.
 (2) Ownership is 58.1736% by Humana Insurance Company, 1.8029% by The Savannah Bank, N.A., an unaffiliated entity and 40.2135% by GMAC Insurance Georgia, L.L.C., an unaffiliated entity. It is a Delaware L.L.C. investment fund organized for the purpose of investing in spa/invest complexes generating Georgia state low income housing tax credits.
 (3) Ownership is 22.5% by HUM-e-FL, Inc., 33.75% by NaVity, Inc., an unaffiliated entity, 33.75% by Health Care Service Corporation, an unaffiliated entity and 10% by Selkore, Inc., an unaffiliated entity.

The Humana Foundation Inc. (KY)
 Unaffiliated Non-Profit
 FED ID # 61-104713

As of 7-31-2015



Organizational Chart



As of 7/31/2015

Humana LLC
(Delaware)

FEIN# 61-0647538

TRANSCEND, LLC

(Delaware 4/7/2014)

FEIN# 46-5329373

Contractual Relationship between the MSO
and the IPA's referenced below.
NO OWNERSHIP INTEREST

Alabama Community Physician Network, P.C.

(Alabama 12/30/2014) FEIN# 47-2750105

50% Robert Grossman, M.D.

50% Steve Lee, M.D.

Arkansas Community Physician Network, P.A.

(Arkansas 12/31/2014) FEIN# 47-2770181

50% James W. Slezak, M.D.

50% Kenneth E. Murphy, M.D.

Kansas City Community Physician Network, P.A.

(Kansas 9/8/2014) FEIN# 47-2111323

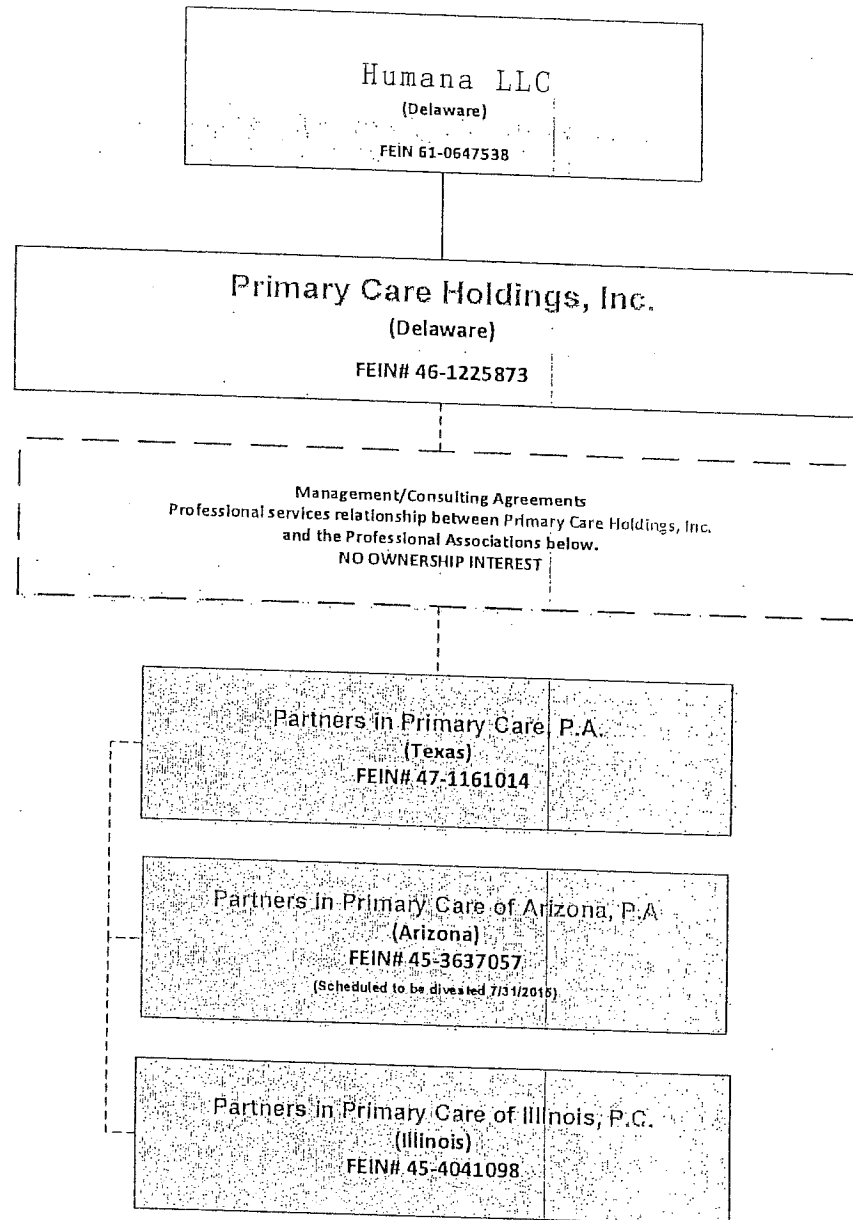
100% Elizabeth S. Peterson, M.D.

Virginia Community Physician Network, P.C.

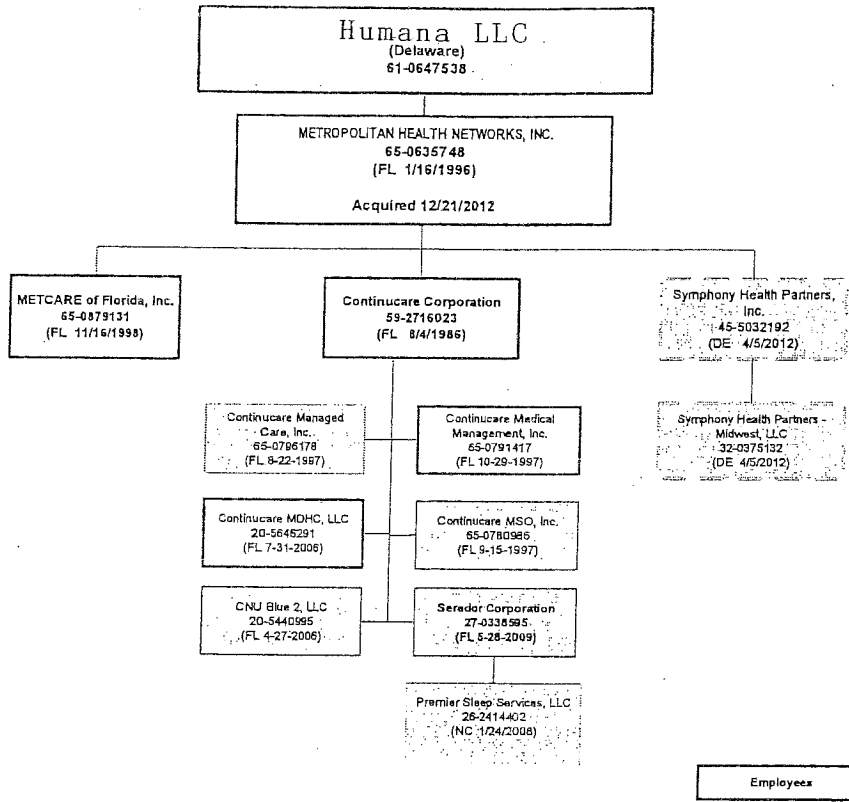
(Virginia 4/30/2015) FEIN# 47-3950146

100% Maureen E. Dempsey, M.D.

As of 7/31/2015



As of 7-31-2015



Scheduled to be Merged
out 4th Qtr 2015

Companies with
Employees

Licensed Companies

Humana LLC

(Delaware)

61-0647538

As of 7/31/2015

Humana at Home, Inc.
(f/k/a SeniorBridge Family Companies, Inc.)
13-4036798 (01/21/2000 - DE)
Acq. 07/06/2012

SeniorBridge Family
Companies (FL), Inc.
65-1096853
(03/28/2001 - FL)

SeniorBridge-Florida,
LLC
59-2518701
(08/1/2008 - FL)

Naples Health Care
Specialists, LLC
65-0992582
(12/15/2008 - FL)

Nursing Solutions, LLC
65-0688221
(04/29/2009 - FL)

1st Choice Home
Health Care, LLC
20-0381804
(05/05/2009 - FL)

Care Partners Home
Care, LLC
26-0815856
(06/26/2009 - FL)

Complex Clinical
Management, Inc.
45-3713941
(02/28/2012 - FL)

American Eldercare of
North Florida, LLC
45-3818750
(11/03/2011 - FL)

American Eldercare,
Inc.
65-0380198
(01/13/1993 - FL)

SeniorBridge Care
Management, Inc.
80-0581269
(04/13/2010 - NY)

SeniorBridge Family
Companies (AZ), Inc.
46-0702349
(07/26/2012 - AZ)

SeniorBridge Family
Companies (CA), Inc.
45-3039782
(07/08/2011 - CA)

SeniorBridge Family
Companies (CT), Inc.
27-0452360
(06/29/2009 - CT)

SeniorBridge Family
Companies (IL), Inc.
02-0660212
(10/15/2002 - IL)

SeniorBridge Family
Companies (IN), Inc.
20-0301155
(09/22/2003 - IN)

Humana at Home (MA), Inc.
(f/k/a SeniorBridge Family
Companies (MA), Inc.)
04-3580066
(11/01/2001 - MA)

SeniorBridge Family
Companies (MD), Inc.
81-0557727
(07/17/2002 - MD)

SeniorBridge Family
Companies (MO), Inc.
46-0677759
(07/26/2012 - MO)

SeniorBridge (NC), Inc.
56-2593719
(06/12/2006 - NC)

SeniorBridge Family
Companies (NJ), Inc.
36-4484449
(11/28/2001 - NJ)

SeniorBridge Family
Companies (NY), Inc.
36-4484443
(11/29/2001 - NY)

SeniorBridge Family
Companies (OH), Inc.
20-0260501
(08/20/2003 - OH)

SeniorBridge Family
Companies (PA), Inc.
38-3643832
(02/06/2002 - PA)

SeniorBridge Family
Companies (TX), Inc.
01-0766084
(01/31/2003 - TX)

SeniorBridge Family
Companies (VA), Inc.
46-0691871
(07/27/2012 - VA)

ROHC, L.L.C.
75-2844854
(10/18/1999 - TX)

Humana At Home
(Dallas), Inc.
75-2739333
(12/22/1997 - TX)

Humana At Home
(Houston), Inc.
76-0537878
(05/20/1997 - TX)

Humana At Home
(TLC), Inc.
75-2600512
(06/02/1995 - TX)

Complex Medical Management, P.L.L.C.
Eric Rackow is the sole shareholder.
The P.L.L.C. is a Corporation FED ID# 27-3544490

Note: The formation of the PLLC allows SeniorBridge to hire (through the PLLC) physicians and nurses in the event that SeniorBridge determines that the performance of duties by its care managers may involve the practice of medicine and nursing. This arrangement between SeniorBridge and the PLLC only applies to its operations within New York State.