

EXHIBITS TO FORM A STATEMENT REGARDING
QUARTZ HEALTH PLAN CORPORATION;
QUARTZ HEALTH INSURANCE CORPORATION; AND
QUARTZ HEALTH BENEFIT PLANS CORPORATION

Exhibit 3

Pro Forma Post-Acquisition Organizational Chart for the Applicant and its Affiliates

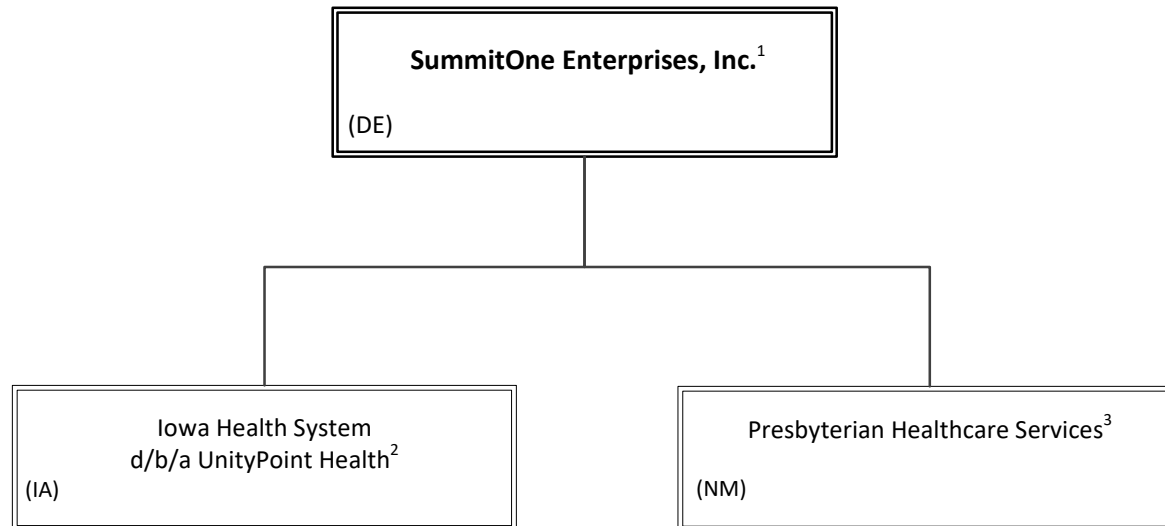
Enclosed is a pro forma post-acquisition organizational chart for the Applicant incorporating the current UPH and current PHS organizational charts.

EXHIBITS TO FORM A STATEMENT REGARDING
QUARTZ HEALTH PLAN CORPORATION;
QUARTZ HEALTH INSURANCE CORPORATION; AND
QUARTZ HEALTH BENEFIT PLANS CORPORATION

Exhibit 3-A

Pro Forma Post-Acquisition Organizational Chart for the Applicant

Pro Forma Post-Acquisition Organizational Chart

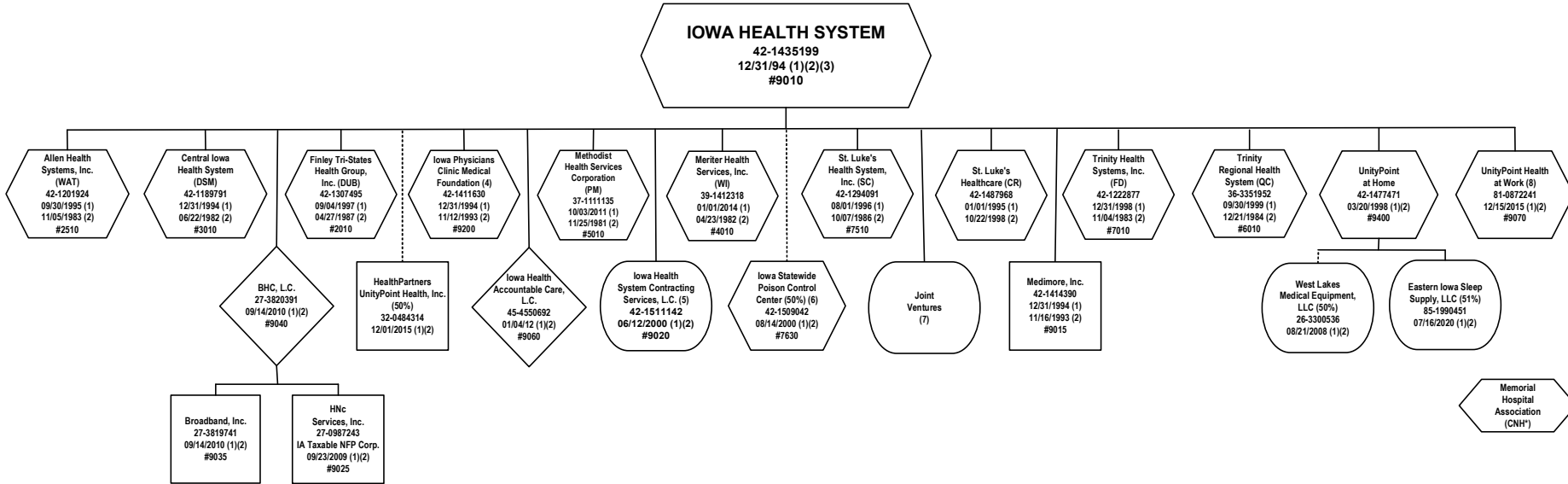


1. SummitOne Enterprises, Inc. will be the sole corporate member of Iowa Health System d/b/a UnityPoint Health and Presbyterian Healthcare Services.
2. The complete organizational chart for Iowa Health System d/b/a UnityPoint Health and its affiliates is set forth in Exhibit 3-B.
3. The complete organizational chart for Presbyterian Healthcare Services and its affiliates is attached to the forth in Exhibit 3-C.

EXHIBITS TO FORM A STATEMENT REGARDING
QUARTZ HEALTH PLAN CORPORATION;
QUARTZ HEALTH INSURANCE CORPORATION; AND
QUARTZ HEALTH BENEFIT PLANS CORPORATION

Exhibit 3-B

Pro Forma Post-Acquisition Organizational Chart for UnityPoint Health



NOTES:

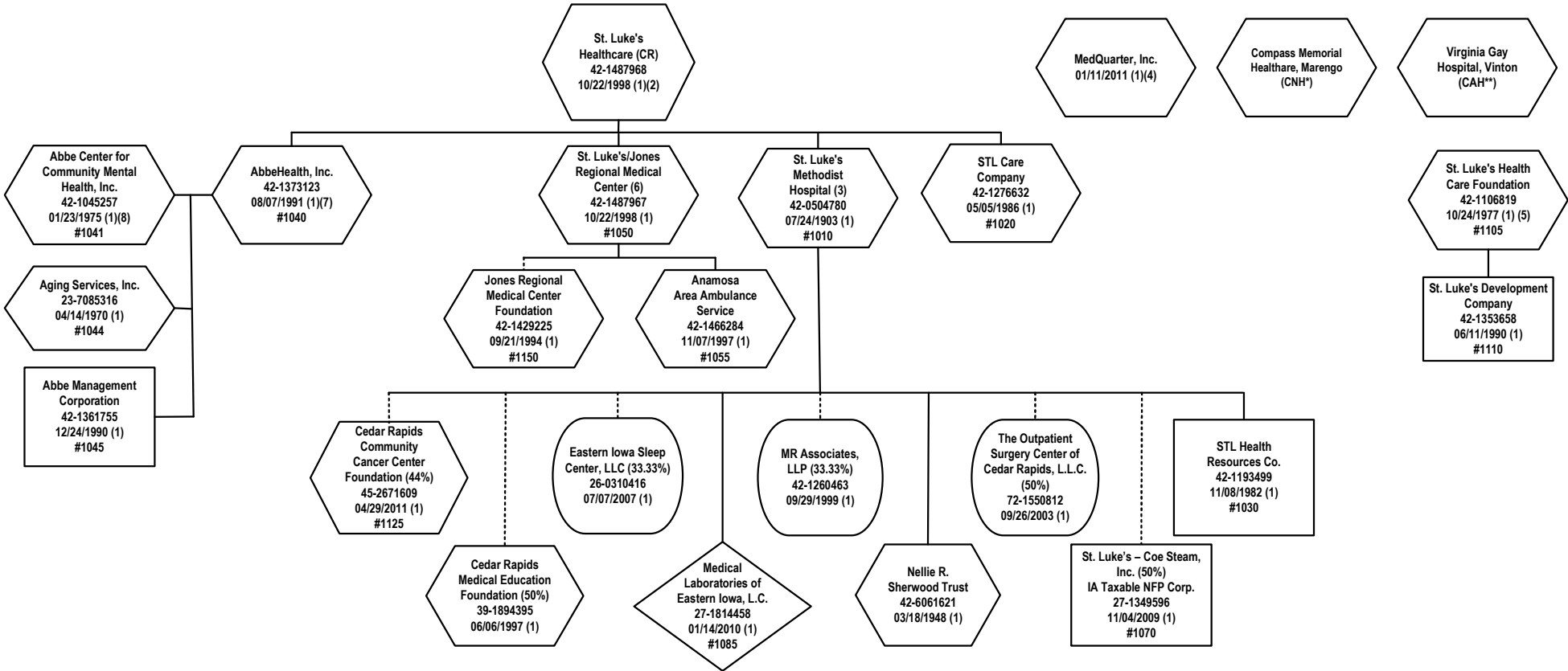
- (1) Dates are when affiliate joined Iowa Health System.
 - (2) Date of Incorporation/Organization.
 - (3) Iowa Health System d/b/a UnityPoint Health. Joint ventures and others as of 12/31/2021:
 - Health Velocity Capital I, LP (5.62%)
 - HealthNet connect, L.C. (9.09%)
 - Heritage Healthcare Innovation Fund, LP (4.79%)
 - Heritage Healthcare Innovation Fund II, LP (4.50%)
 - Heritage Healthcare Innovation Fund III, LP (3.15%)
 - Quartz Health Benefit Plans Corporation (f/k/a Unity Health Plans Insurance Corporation) (15.871% by attribution)
 - Quartz Health Insurance Corporation (f/k/a Physicians Plus Insurance Corporation) (15.871% by attribution)
 - Quartz Health Plan Corporation (f/k/a Gunderson Health Plan, Inc.) (12.288%)
 - Quartz Health Plan MN Corporation (f/k/a Gunderson Health Plan Minnesota) (12.288% by attribution)
 - Quartz Health Solutions, Inc. (15.871% by attribution)
 - Quartz Holding Company (15.871%)
 - SEI Core Property Fund LP (6.60%)
 - SEI Energy Debt Fund, LP (21.63%)
 - SEI Global Private Assets III, LP (28.41%)
 - SEI Global Private Assets IV, LP (12.58%)
 - SEI Global Private Assets V, LP (6.52%)
- Innovation Fund and Other Investments as of 12/31/2022:
- AvaSure, LLC (LLC Corp 1.20%)
 - b.well Connect Health Inc. (C Corp 7.39%)
 - Bright.MD Inc. (C Corp 5.92%)
 - Cardiosense, Inc. (C Corp 6.81%)
 - Carta Healthcare, Inc. (C Corp <5%)
 - DocStation, Inc. (C Corp 14.58%)
 - Epharmix Inc. (C Corp, convertible notes, shares not issued)
 - Health Catalyst, Inc. (C Corp <1%)
 - Health Note Inc. (C Corp 2.22%)
 - Kaizen Health Inc. (C Corp 21.50%)
 - Lightbeam Health Solutions (unknown <5%)
 - OpenLoop Health, Inc. (C Corp <5%)

- Innovation Fund and Other Investments as of 12/31/2022 - CONTINUED:
- Pathware Inc. (C Corp 27.69%)
 - Potrero Medical, Inc. (C Corp, part of Epharmix convertible note receipt, shares not issued)
 - Prolucent Health, Inc. (C Corp 8.98%)
 - RxRevu Inc (C Corp 2.82%)
 - TailorMed Medical LTD (Israeli Corp 5.12%)
 - Truveta, Inc. (C Corp, convertible notes, shares not issued)
 - Vida Diagnostics Inc. (C Corp 13.01%)
 - WiserCare Inc. (C Corp, convertible notes, shares not issued)
- (4) Iowa Physicians Clinic Medical Foundation d/b/a UnityPoint Clinic. Effective 1/1/2023, Siouxland Pace, Inc. (9220) joins Iowa Physicians Clinic Medical Foundation d/b/a UnityPoint Clinic. Joint ventures and others as of 12/31/2021: Central Iowa Surgical Services Co-Management Company, LLC (6.67%) Iowa Health System Contracting Services, L.C. (10.00%)
 - (5) Amount controlled by Iowa Health System (corp) as of 12/31/2021 is 10.00%. Total by attribution is 100.00%.
 - (6) Iowa Statewide Poison Control Center d/b/a Iowa Poison Control Center.
 - (7) Percentages are system-wide ownership by attribution at 12/31/2021: HealthNet connect, L.C. (36.36% by attribution, 9.09% separately)
 - (8) Effective 1/1/2023, UnityPoint Health at Work (9210) joins Iowa Physicians Clinic Medical Foundation d/b/a UnityPoint Clinic.

CHANGES FROM PRIOR YEAR:

- Added:**
- 1) Cardiosense, Inc. (C Corp 6.81%)
 - 2) Carta Healthcare, Inc. (C Corp <5%)
 - 3) Epharmix Inc. (C Corp, convertible notes, shares not issued)
 - 4) Health Note Inc. (C Corp 2.22%)
 - 5) Lightbeam Health Solutions (unknown <5%)
 - 6) OpenLoop Health, Inc. (C Corp <5%)
 - 7) Potrero Medical, Inc. (C Corp, part of Epharmix convertible note receipt, shares not issued)
 - 8) Truveta, Inc. (C Corp, convertible notes, shares not issued)
- Removed:**
- 1)
 - 2)
 - 3)
- Change in Investment or affiliation presentation:**
- 1) Health Velocity Capital I, LP (5.62%)
 - 2) Heritage Healthcare Innovation Fund, LP (4.79%)
 - 3) Heritage Healthcare Innovation Fund II, LP (4.50%)
 - 4) Heritage Healthcare Innovation Fund III, LP (3.15%)
 - 5) Quartz Health Benefit Plans Corporation (f/k/a Unity Health Plans Insurance Corporation) (15.871% by attribution)
 - 6) Quartz Health Insurance Corporation (f/k/a Physicians Plus Insurance Corporation) (15.871% by attribution)
 - 7) Quartz Health Plan Corporation (f/k/a Gunderson Health Plan, Inc.) (12.288%)
 - 8) Quartz Health Plan MN Corporation (f/k/a Gunderson Health Plan Minnesota) (12.288% by attribution)
 - 9) Quartz Health Solutions, Inc. (15.871% by attribution)
 - 10) Quartz Holding Company (15.871%)
 - 11) SEI Core Property Fund LP (6.60%)
 - 12) SEI Energy Debt Fund, LP (21.63%)
 - 13) Kaizen Health Inc. (C Corp 21.50%)
 - 14) Pathware Inc. (C Corp 27.69%)
 - 15) Prolucent Health, Inc. (C Corp 8.98%)
 - 16) RxRevu Inc (C Corp 2.82%)
 - 17) Vida Diagnostics Inc. (C Corp 13.01%)





NOTES:

- (1) Date of Incorporation/Organization.
- (2) Joint ventures and others as of 12/31/2021:
Iowa Health System Contracting Services, L.C. (10.00%)
- (3) Joint ventures and others as of 12/31/2021:
HealthNet connect, L.C. (9.09%)
Honeyman Dialysis, LLC (5.00%)
PCI Regional Medical Mall, LLC (VARIOUS)
- (4) 501(c)(6) – Business League. CEO one of three original board members.

- (5) Charitable Remainder Unitrusts as of 12/31/2021:
Dale & Helen Fye Charitable Remainder Unitrust (100%)
Edna Gelski Unitrust Dtd. 12/28/89 (40%)
David & Joan Thaler Unitrust Dtd. 12/14/89 (50%)
- (6) Joint ventures and others as of 12/31/2021:
HealthNet connect, L.C. (9.09%)
- (7) Joined system 01/01/2017.
- (8) Joint ventures and others as of 12/31/2021:
Johnson County Permanent Supportive Housing, L.P. (0.01%)

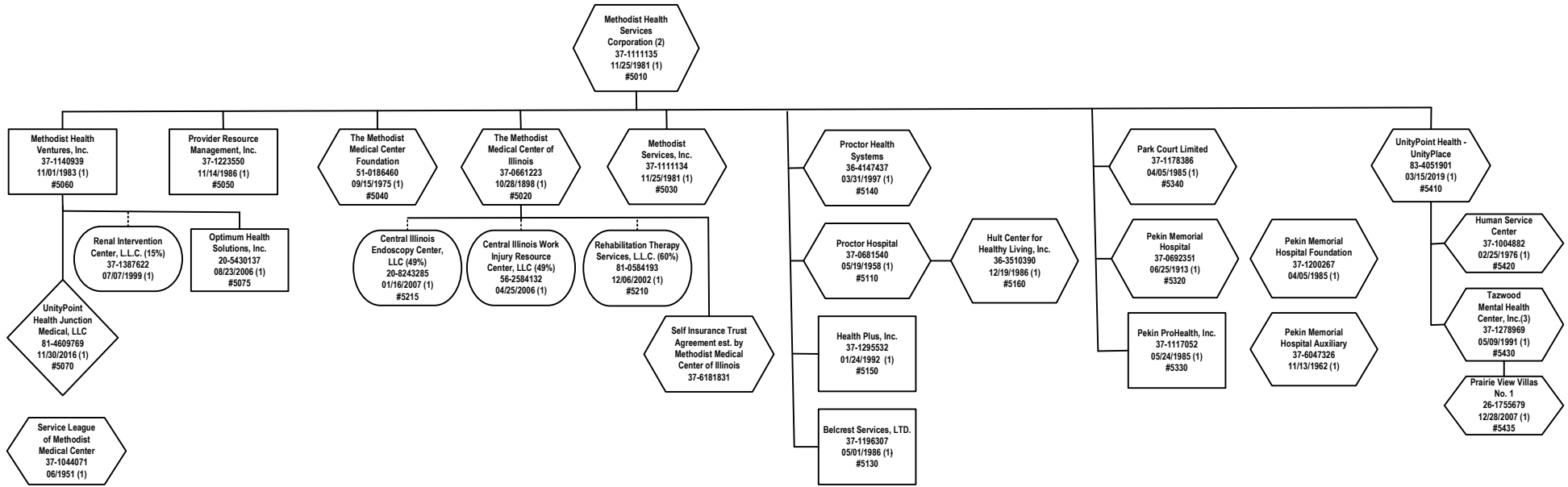
CHANGES FROM PRIOR YEAR:

- Added:**
- 1)
 - 2)
 - 3)
 - 4)
- Removed:**
- 1) Chatham Oaks, Inc. merged into Abbe Center for Community Mental Health - 1/1/2022
 - 2) Penn Center, Inc. merged into Abbe Center for Community Mental Health - 1/1/2022
 - 3)
 - 4)

Change in Investment or affiliation presentation:

- 1) Johnson County Permanent Supportive Housing, L.P. – moved under Abbe Center for Community Mental Health, Inc. (Chatham Oaks investment).





NOTES:

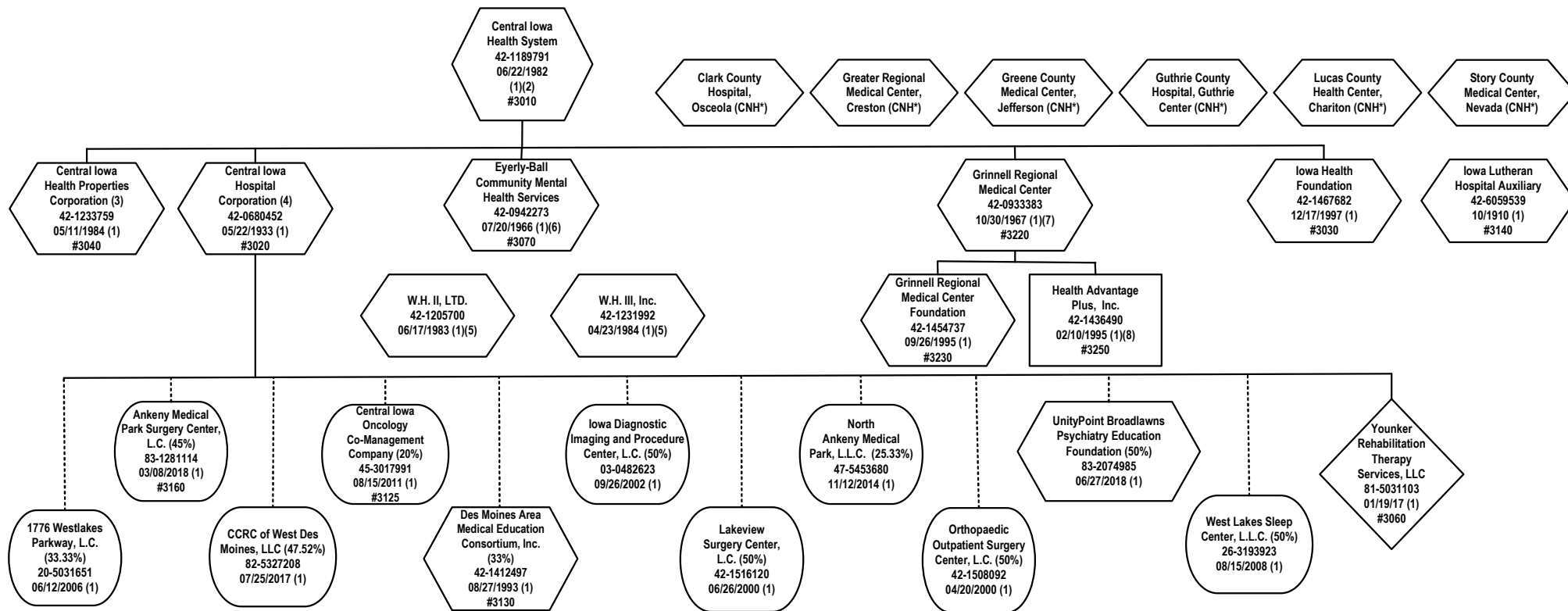
- (1) Date of Incorporation/Organization.
- (2) Joint ventures and others as of 12/31/2021:
 Arch Development Fund I, L.P. (small investment)
 Iowa Health System Contracting Services, L.C (10.0. 0%)
 Affiliation with Carle Health, Urbana, IL, to be effective 04/01/2023
- (3) Joint ventures and others as of 12/31/2022:
 Precedence Plus, IL Taxable NFP Corporation (5.28% member)

CHANGES FROM PRIOR YEAR:

- Added:**
- 1) Carle Affiliation effective 04/01/2023 – Note 2
 - 2) Precedence Plus, IL Taxable NFP Corporation (5.28% member) – Note 3
 - 3)
 - 4)
- Removed:**
- 1) Home Health Plus Services, Inc. – Dissolved (Final return filed 12/31/2021)
 - 2) Marigold City Land Trust No. One – Dissolved 7/2021 (Final activity was reported on the 12/31/2021 Form 990 of Park Court Limited)
 - 3) Premier Purchasing Partners, L.P. – Final K-1 for 2021 – Note 3
 - 4) Midwest Orthopaedic Hospital at UnityPoint Health-Proctor, LLC – Final Return for Short Period 1/1/2022 – 4/30/2022
 - 5) Removed Notes 4 through 7, these entities have all been dissolved
 - 6) Central Illinois Cancer Care Center, L.L.C. – Activity was ceased for 2022

- Change in Investment or affiliation presentation:**
- 1)
 - 2)
 - 3)
 - 4)





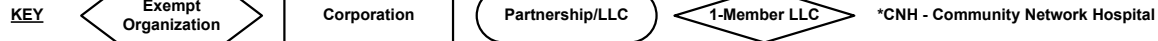
NOTES:

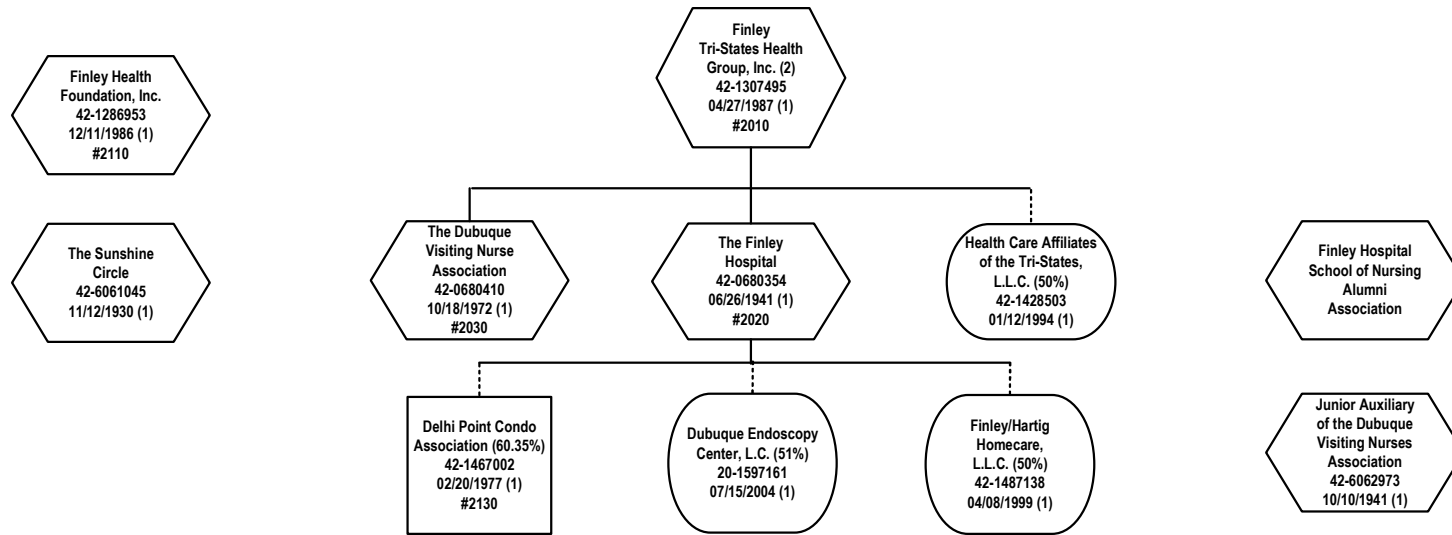
- (1) Date of Incorporation/Organization.
- (2) Joint ventures and others as of 12/31/2021:
Iowa Health System Contracting Services, L.C. (10.00%)
- (3) 501(c)(2) - Title holding corporation.
Joint ventures and others as of 12/31/2021:
Des Moines Parking Associates #3050 (100% owned general partnership)
- (4) Central Iowa Hospital Corporation d/b/a UnityPoint Health—Des Moines, Methodist Medical Center, Blank Children’s Hospital, Iowa Lutheran Hospital, Methodist West Hospital.
Joint ventures and others as of 12/31/2021:
Legacy Senior Housing Investors, LLC (11.89%)

- (5) Eyerly-Ball Community Mental Health Services is a member. Affiliation subject to HUD approval.
- (6) Joined system 01/01/2018.
- (7) Joined system 01/01/2018.
Charitable Remainder Trusts as of 12/31/2019:
Hansen Charitable Remainder Annuity Trust (94%)
Hansen Charitable Remainder Unitrust (93%)
- (8) Joint ventures and others as of 12/31/2021:
Grinnell Private Investment Co. LLC (23.20%)

CHANGES FROM PRIOR YEAR:

- Added:**
- 1)
 - 2)
 - 3)
- Removed:**
- 1) Central Iowa Cardiovascular Co-Management Company, LLC – Dissolved 12/31/2022
 - 2) Central Iowa Surgical Services Co-Management Company, LLC – Dissolved 12/31/2022
 - 3) Grinnell Regional Medical Center Auxiliary dissolved effective 4/29/2022.
 - 4) Rural Health Alliance LLC – Final K-1 for 2021
 - 5) West Hospital Orthopedic Co-Management Company, LLC – Dissolved 12/31/2022
- Change in Investment or affiliation presentation:**
- 1)
 - 2)
 - 3)





NOTES:

- (1) Date of Incorporation/Organization.
- (2) Joint ventures and others as of 12/31/2021:
 Iowa Health System Contracting Services, L.C. (10.00%)

CHANGES FROM PRIOR YEAR:

Added:

- 1)
- 2)
- 3)
- 4)

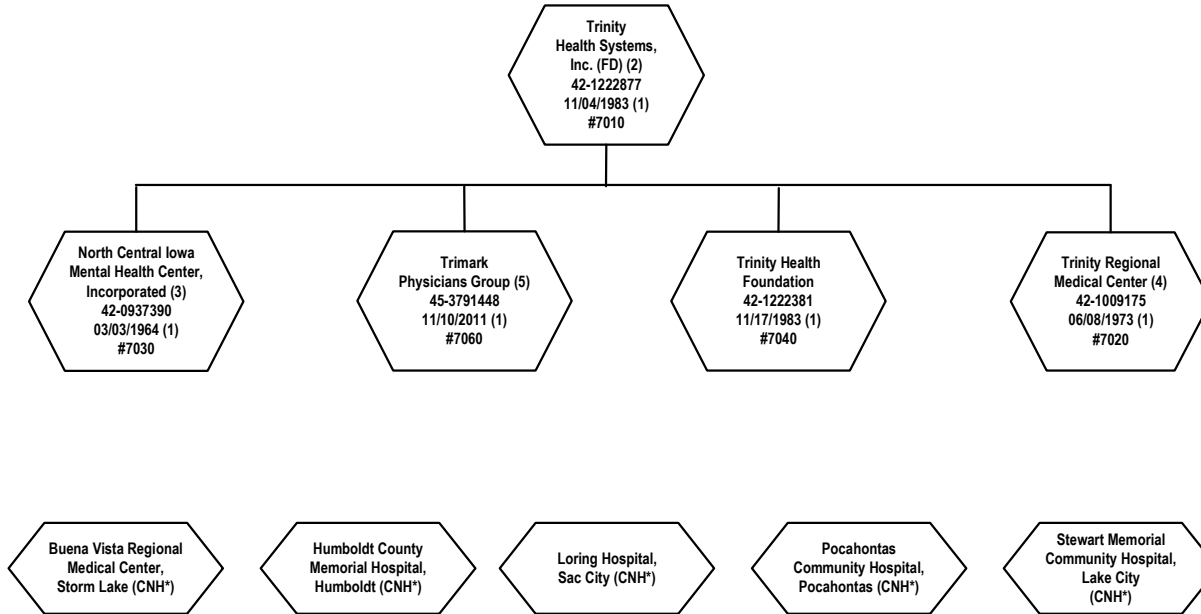
Removed:

- 1) DEB LTD Partnership Notes 3 & 4 – Final 2020 K-1
- 2)
- 3)
- 4)

Change in Investment or affiliation presentation:

- 1) Delhi Point Condo Association (60.35%)
- 2)
- 3)
- 4)





NOTES:

- (1) Date of Incorporation/Organization.
- (2) Joint ventures and others as of 12/31/2021:
Iowa Health System Contracting Services, L.C. (10.00%)
- (3) North Central Iowa Mental Health Center, Incorporated d/b/a Berryhill Center for Mental Health. Joined System 05/27/2008.
- (4) Joint ventures and others as of 12/31/2021:
HealthNet connect, L.C. (9.09%)
- (5) Name changed effective 01/01/2012 – f/k/a TPG Health.

CHANGES FROM PRIOR YEAR:

Added:

- 1)
- 2)
- 3)
- 4)

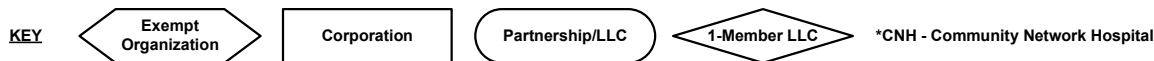
Removed:

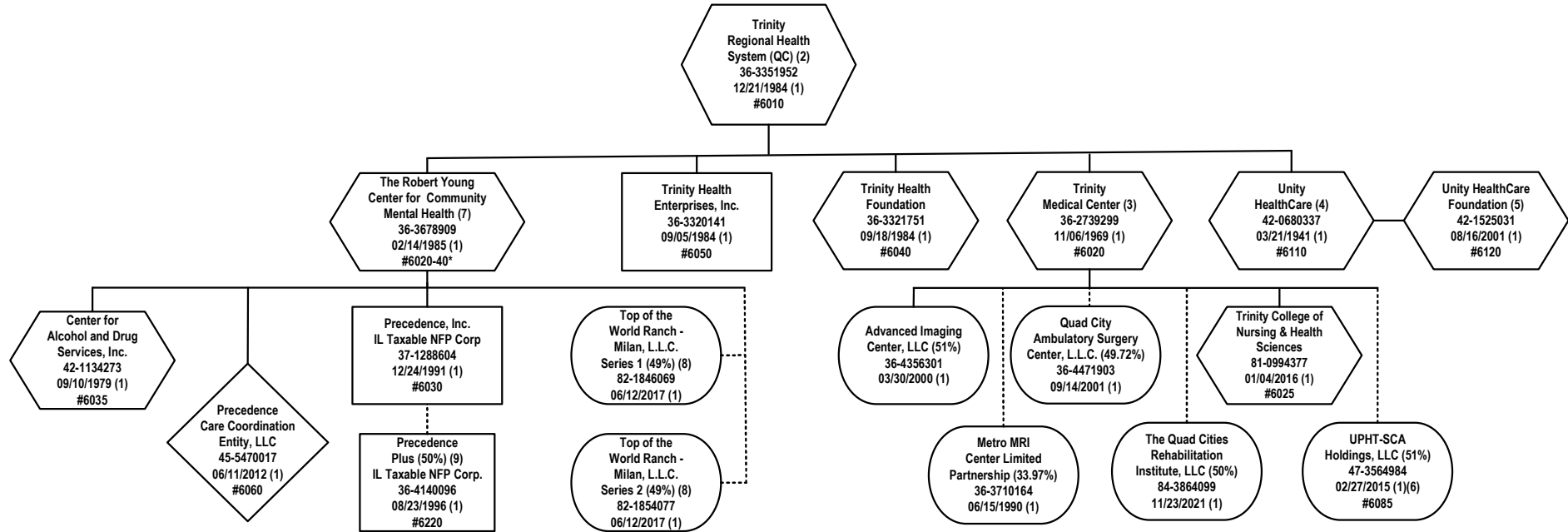
- 1) Trinity Regional Hospital Auxiliary merged into Trinity Health Foundation on 04/01/2022

- 2)
- 3)
- 4)

Change in Investment or affiliation presentation:

- 1)
- 2)
- 3)
- 4)





NOTES:

- (1) Date of Incorporation/Organization.
- (2) Joint ventures and others as of 12/31/2021:
Iowa Health System Contracting Services, L.C. (10.00%)
- (3) Trinity Medical Center d/b/a Trinity Rock Island, Trinity Moline, Trinity Bettendorf.
- (4) Unity Healthcare d/b/a Trinity Muscatine. Joined System 07/01/2009.
- (5) Unity Healthcare Foundation d/b/a Trinity Muscatine Foundation. Joined System 01/01/2012.
- (6) Joint ventures and others as of 12/31/2022:
Mississippi Medical Plaza, L.C. (51.39% directly), Trinity Medical Center (26.21% by attribution)
- (7) The Robert Young Center for Community Mental Health d/b/a Robert Young Center.
- (8) Formed under Master Series LLC entity, Top of the World Ranch – Milan, L.L.C.
- (9) No operational activity, looking to dissolve in 2023.

CHANGES FROM PRIOR YEAR:

Added:

- 1) Note 9 for Precedence Plus
- 2)
- 3)
- 4)

Removed:

- 1)
- 2)
- 3)
- 4)

Change in Investment or affiliation presentation:

- 1) Advanced Imaging Center, LLC – Purchase Agreement executed 11/01/2022 increasing ownership to 51%
- 2) Mississippi Medical Plaza, L.C. ownership change (Note 6)
- 3)
- 4)

KEY





NOTES:

- (1) Date of Incorporation/Organization.
- (2) Northwest Iowa Hospital Corporation d/b/a St. Luke's Regional Medical Center. Joint ventures and others as of 12/31/2021: Davis Dialysis, LLC (5.00%) SLRMC Cardiovascular Co-Management Company, LLC – Remains Active with IA SOS 12/31/2022
- (3) Joint ventures and others as of 12/31/2021: Iowa Health System Contracting Services, L.C. (10.00%)
- (4) Health, Incorporated became a private foundation 7/1/2004.
- (5) Date joined System.
- (6) Transportation services ended 7/1/2020 – in process of closing business. Remains active with SOS as of 12/31/2022.
- (7) Effective 1/1/2023, Siouxland Pace, Inc. (9220) joins Iowa Physicians Clinic Medical Foundation d/b/a UnityPoint Clinic.

CHANGES FROM PRIOR YEAR:

Added:

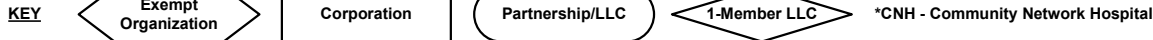
- 1)
- 2)
- 3)
- 4)

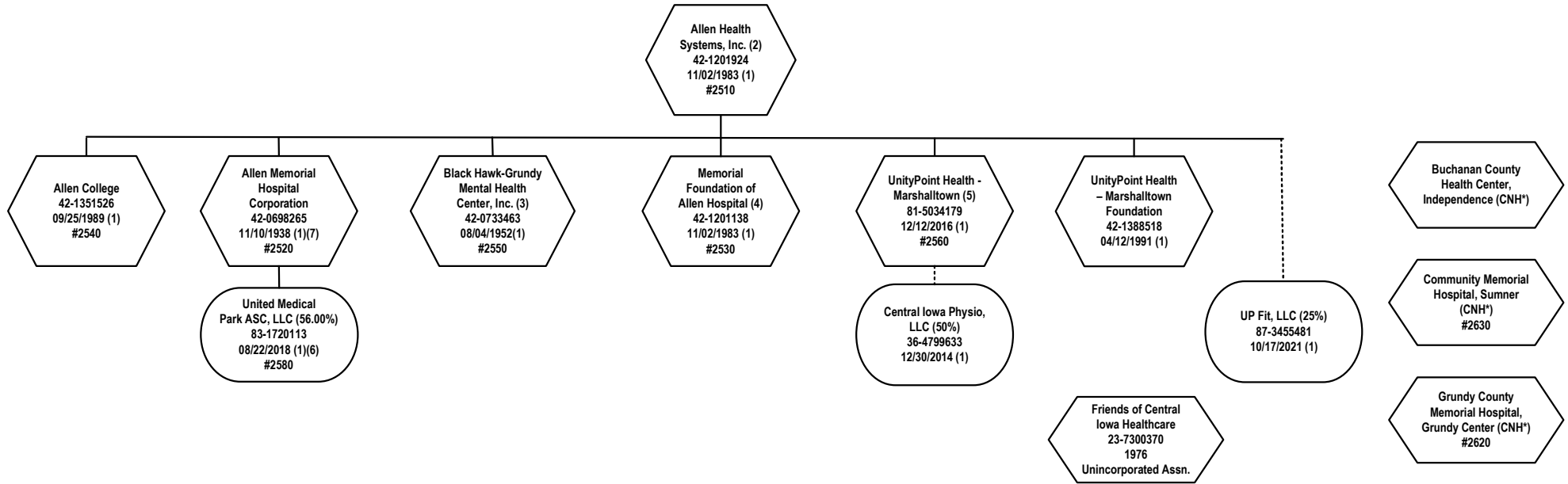
Removed:

- 1)
- 2)
- 3)
- 4)

Change in Investment or affiliation presentation:

- 1)
- 2)
- 3)
- 4)





NOTES:

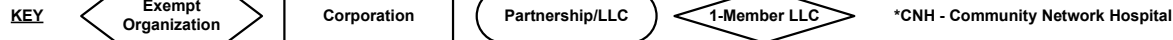
- (1) Date of Incorporation/Organization
- (2) Allen Health Systems, Inc. d/b/a UnityPoint Health-Waterloo. Joint ventures and others as of 12/31/2021:
 Iowa Health System Contracting Services, L.C. (10.00%)
 Human Services, Inc. (non-operating) - Administratively Dissolved 09/28/2022. Will seek Board approval to formally dissolve with Secretary of State.
- (3) Affiliation Agreement to be effective 01/01/2015.
- (4) Memorial Foundation of Allen Hospital d/b/a Allen Foundation.
- (5) F/K/A UnityPoint Health Regional Care.
- (6) Single-member LLC through 1/31/2020.
- (7) Joint ventures and others as of 12/31/2022:
 Northeast Iowa Medical Education Foundation, Inc. (50%) - Administratively Dissolved 09/07/2021. Entity dissolving; final return not yet available on IRS website.
 Amity Fellowserve-Iowa, Inc. (49%) - Dissolution approved December 2022. Need to formally dissolve with Secretary of State and final return.

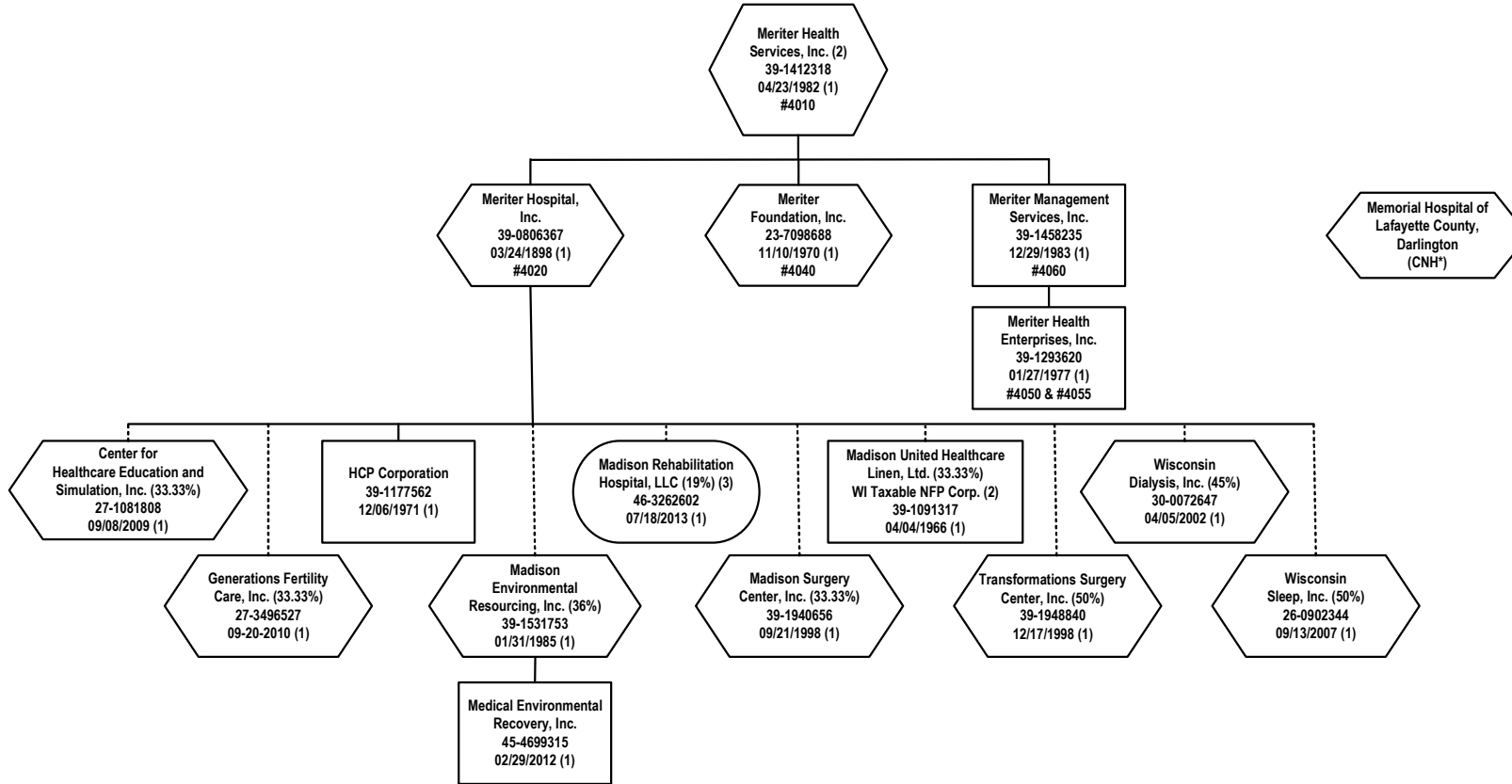
CHANGES FROM PRIOR YEAR:

- Added:**
- 1) Amity Fellowserve-Iowa, Inc. – Note 7
 - 2) Human Services, Inc. – Note 2
 - 3)
 - 4)
 - 5)

- Removed:**
- 1)
 - 2)
 - 3)
 - 4)

- Change in Investment or affiliation presentation:**
- 1) United Medical Park ASC, LLC (56.00%)
 - 2)
 - 3)
 - 4)





NOTES:

- (1) Date of Incorporation/Organization
- (2) A Wisconsin Corporation not listed with the Internal Revenue Service as an exempt organization. Treating as a taxable NFP (Open Item).
- (3) Joined joint venture 02/01/2016.

CHANGES FROM PRIOR YEAR:

Added:

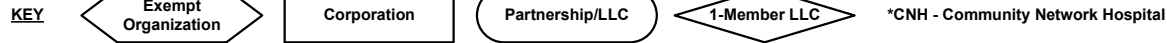
- 1)
- 2)
- 3)
- 4)

Removed:

- 1)
- 2)
- 3)
- 4)

Change in Investment or affiliation presentation:

- 1)
- 2)
- 3)
- 4)

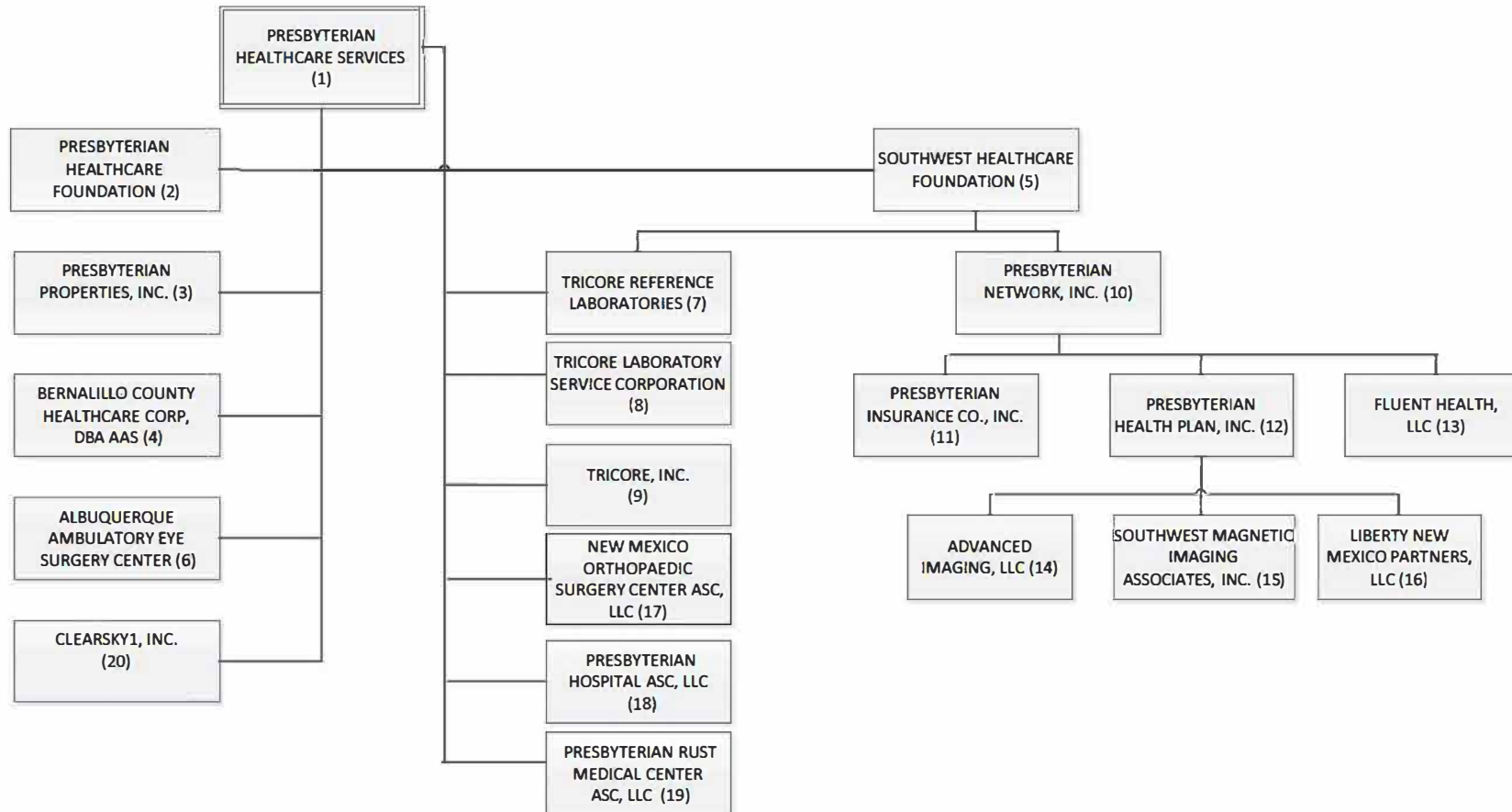


EXHIBITS TO FORM A STATEMENT REGARDING
QUARTZ HEALTH PLAN CORPORATION;
QUARTZ HEALTH INSURANCE CORPORATION; AND
QUARTZ HEALTH BENEFIT PLANS CORPORATION

Exhibit 3-C

Pro Forma Post-Acquisition Organizational Chart for Presbyterian

**PRESBYTERIAN HEALTHCARE SERVICES
LEGAL STRUCTURE CHART**



- (1) NM non-profit corporation without members
- (2) NM non-profit corporation without members.
- (3) NM non-profit corporation whose sole member is Presbyterian Healthcare Services.
- (4) NM non-profit corporation with members.
- (5) NM non-profit corporation whose sole member is Presbyterian Healthcare Services.
- (6) NM limited liability company: 31% interest held by Presbyterian Healthcare Services.
- (7) NM taxable non-profit corporation: 38% interest held by Southwest Health Foundation and 12% interest held by Presbyterian Healthcare Services.
- (8) NM non-profit corporation with members – 501(e): 50% interest held by Presbyterian Healthcare Services.
- (9) NM non-profit corporation with members – 501(c): 50% interest held by Presbyterian Healthcare Services.
- (10) NM profit corporation: 100% of common stock held by Southwest Health Foundation.
- (11) NM profit corporation: 100% of common stock held by Presbyterian Network, Inc.
- (12) NM profit corporation: 100% of common stock held by Presbyterian Network, Inc.
- (13) DE limited liability company: 90% interest held by Presbyterian Network, Inc., 5% held by Presbyterian Health Plan, Inc. and 5% interest held by Presbyterian Insurance Company, Inc.
- (14) Limited liability company: 50% interest held by Presbyterian Health Plan, Inc.
- (15) NM profit corporation: 90% of common stock held by Presbyterian Health Plan, Inc.
- (16) Limited liability company: 24.5% interest held by Presbyterian Health Plan, Inc.
- (17) GA limited liability company: 64.75% interest held by Presbyterian Healthcare Services in PHS/USP Health Ventures, LLC a New Mexico limited liability company which in turn holds a 68.5% interest in New Mexico Orthopaedic Surgery Center.
- (18) NM limited liability company: 79.25% interest held by Presbyterian Healthcare Services.
- (19) NM limited liability company: 72.25% interest held by Presbyterian Healthcare Services.
- (20) DE profit corporation: 100% interest held by Presbyterian Healthcare Services.