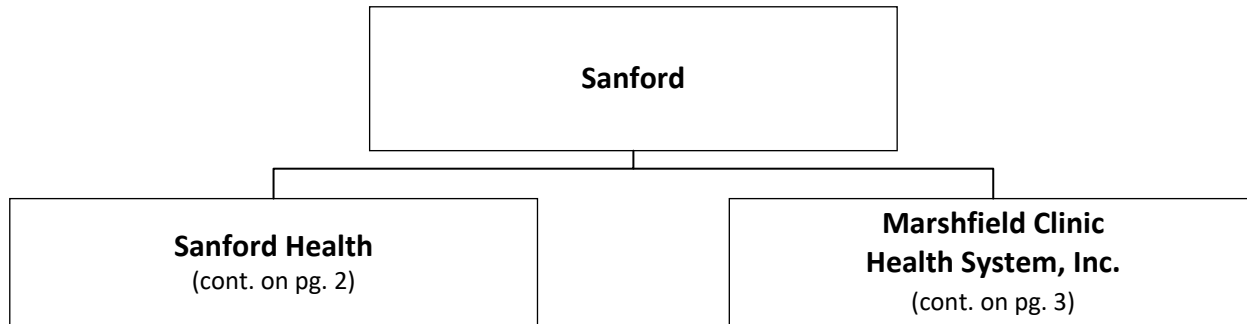
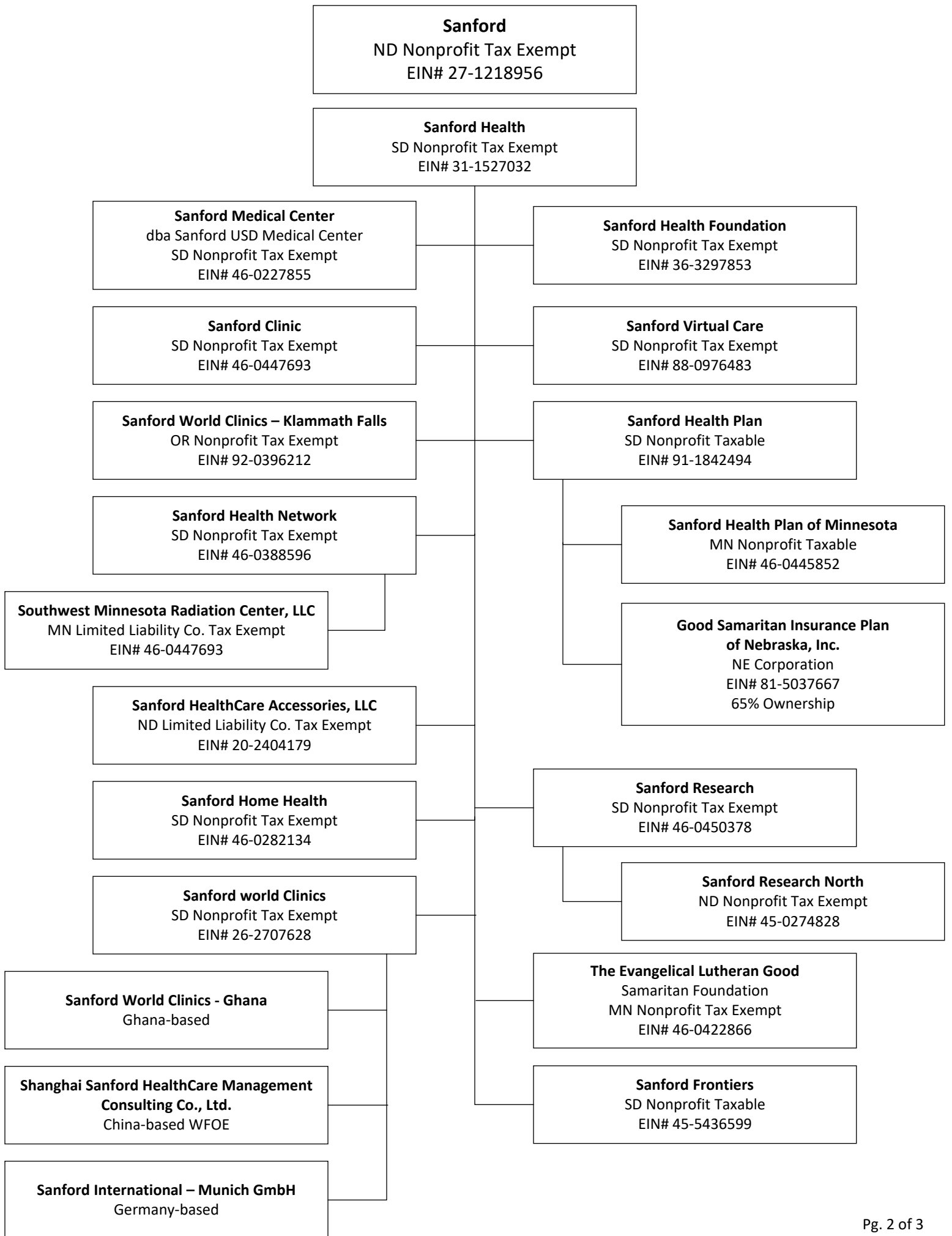


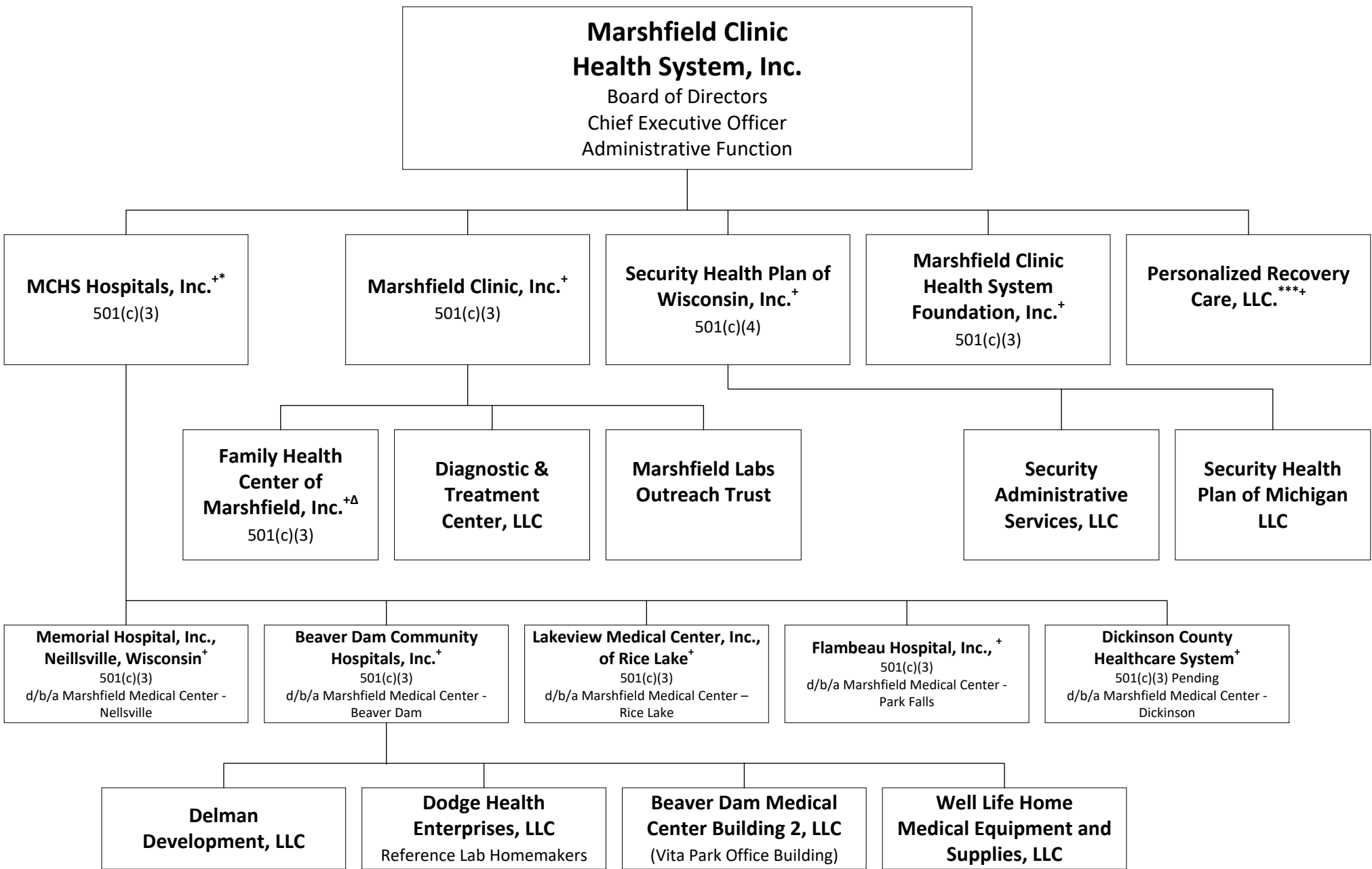
**Exhibit 4**

**Pro Forma Post-Acquisition Organizational Chart for the Applicant and its Affiliates**

**Pro Forma Post-Acquisition Organizational Chart for the Applicant and its Affiliates**







+ These organizations have a board of directors or trustees

\* MCHS Hospitals, Inc., d/b/a Marshfield Medical Center, Marshfield Medical Center – Eau Claire, Marshfield Medical Center – Ladysmith, Marshfield Medical Center – Minocqua, Marshfield Medical Center – Weston and Marshfield Medical Center – River Region.

\*\*\* Contessa Health Holding company, LLC. Is also a member of Personalized Recovery Care, LLC.

Δ While MCI is nominally FHC’s sole “Member” neither MCI nor any other MCHS entity has any power to exercise any control over FHC or appoint any voting members to its board