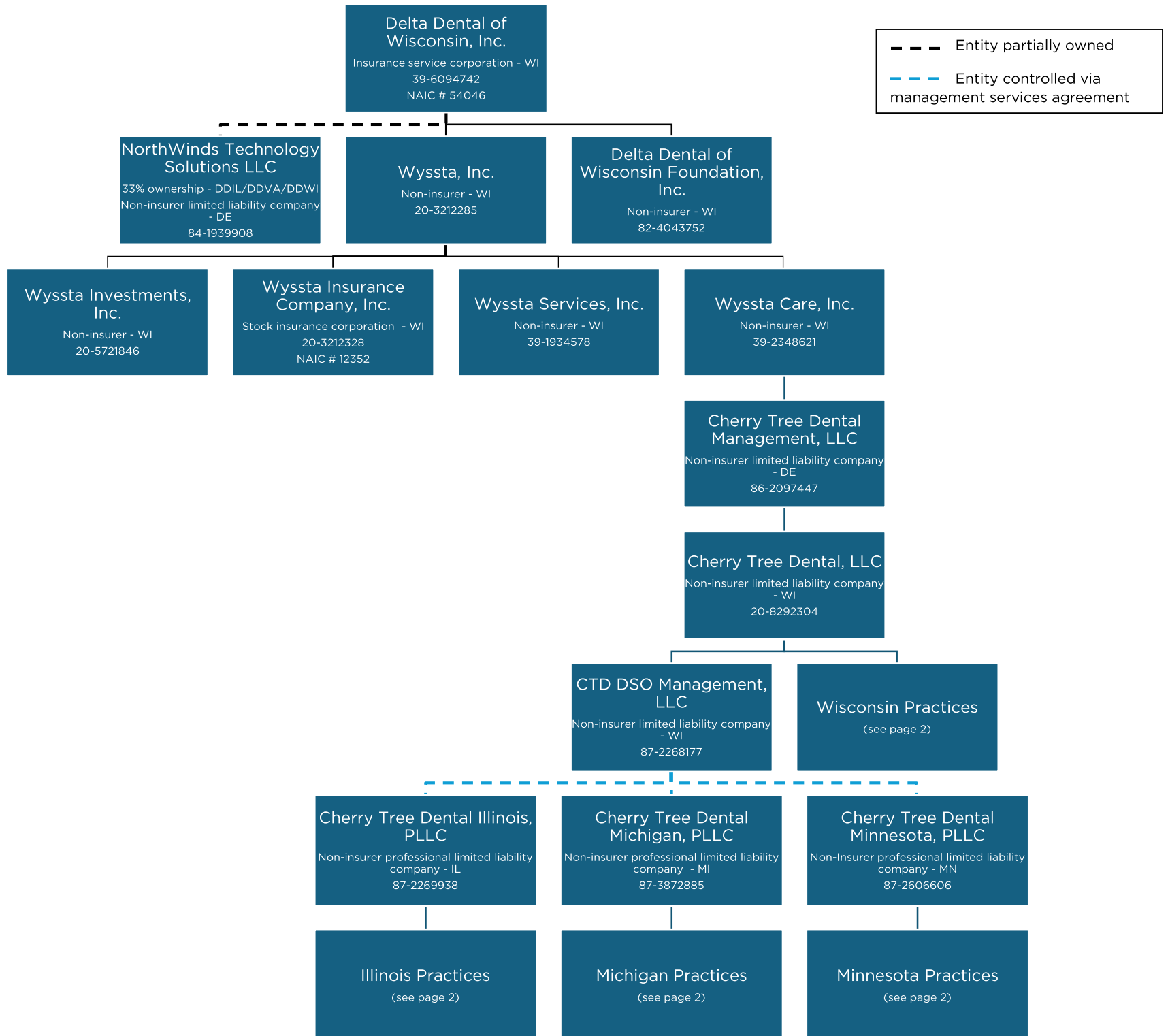


Exhibit C
DDWI System Current Organization Chart



Wisconsin Practices
(wholly owned by Cherry Tree Dental, LLC)

- **Advanced Dental Professionals, LLC**
Non-Insurer limited liability company - WI
82-1795608
- **All Family Dental, LLC**
Non-Insurer limited liability company - WI
82-1766853
- **Appleton Family Dental, LLC**
Non-Insurer limited liability company - WI
85-2230058
- **Black River Falls Dental, LLC**
Non-Insurer limited liability company - WI
85-2062071
- **Bloy Family Dentistry, LLC**
Non-Insurer limited liability company - WI
85-3255525
- **Burlington Schneider Family Dentistry, LLC**
Non-Insurer limited liability company - WI
85-2105183
- **Central Wisconsin Endodontic Specialists, LLC**
Non-Insurer limited liability company - WI
85-0837934
- **Chippewa Dental, LLC**
Non-Insurer limited liability company - WI
82-1876012
- **Cowgill Dental La Crosse 2, LLC**
Non-Insurer limited liability company - WI
84-2250907
- **Cowgill Dental Onalaska, LLC**
Non-Insurer limited liability company - WI
84-2225754
- **Dental Options, LLC**
Non-Insurer limited liability company - WI
82-1838863
- **Dental Visions, LLC**
Non-Insurer limited liability company - WI
82-1854446
- **G&M Family Dental, LLC**
Non-Insurer limited liability company - WI
85-3624323
- **High Bridge Periodontics, LLC**
Non-Insurer limited liability company - WI
93-4852987
- **Menasha Family Dental, LLC**
Non-Insurer limited liability company - WI
85-2040466
- **Marathon Family Dentistry, LLC**
Non-Insurer limited liability company - WI
82-1786029
- **Menomonie Dental, LLC**
Non-Insurer limited liability company - WI
82-1994959
- **Mount Pleasant Family Dentistry, LLC**
Non-Insurer limited liability company - WI
85-2327179
- **New Berlin Family Dentistry, LLC**
Non-Insurer limited liability company - WI
85-1961922
- **Oshkosh Family Dental 2, LLC**
Non-Insurer limited liability company - WI
83-4144438
- **OSM La Crosse, LLC**
Non-Insurer limited liability company - WI
85-2305104
- **Point Place Dental, LLC**
Non-Insurer limited liability company - WI
82-1826640
- **Southwest Family Dental Care, LLC**
Non-Insurer limited liability company - WI
85-3807785
- **WI Rapids Family Dental, LLC**
Non-Insurer limited liability company - WI
85-2272731
- **Wisconsin Rapids Family Dental LLC**
Non-Insurer limited liability company - WI
85-3641523
- **MequonCTD1, LLC**
Non-Insurer limited liability company - WI
86-1674134
- **BrookfieldCTD, LLC**
Non-Insurer limited liability company - WI
86-3274395
- **GreenbayCTD, LLC**
Non-Insurer limited liability company - WI
86-3300304

Illinois Practices
(wholly owned by Cherry Tree Dental Illinois, PLLC)

- **GurneeCTD LLC**
Non-Insurer limited liability company - IL
87-2679533
- **RockfordCTD, LLC**
Non-Insurer limited liability company - IL
87-2355053
- **DuPage Dental Professionals, LLC**
Non-Insurer limited liability company - IL
87-3310495
- **Skokie Dental Professionals, LLC**
Non-Insurer limited liability company - IL
87-3619247

Michigan Practices
(wholly owned by Cherry Tree Dental Michigan, PLLC)

- **Fenton Professionals, LLC**
Non-Insurer limited liability company - MI
87-3985711

Minnesota Practices
(wholly owned by Cherry Tree Dental Minnesota, PLLC)

- **Fairmont Dental Professionals LLC**
Non-Insurer limited liability company - MN
87-2783773