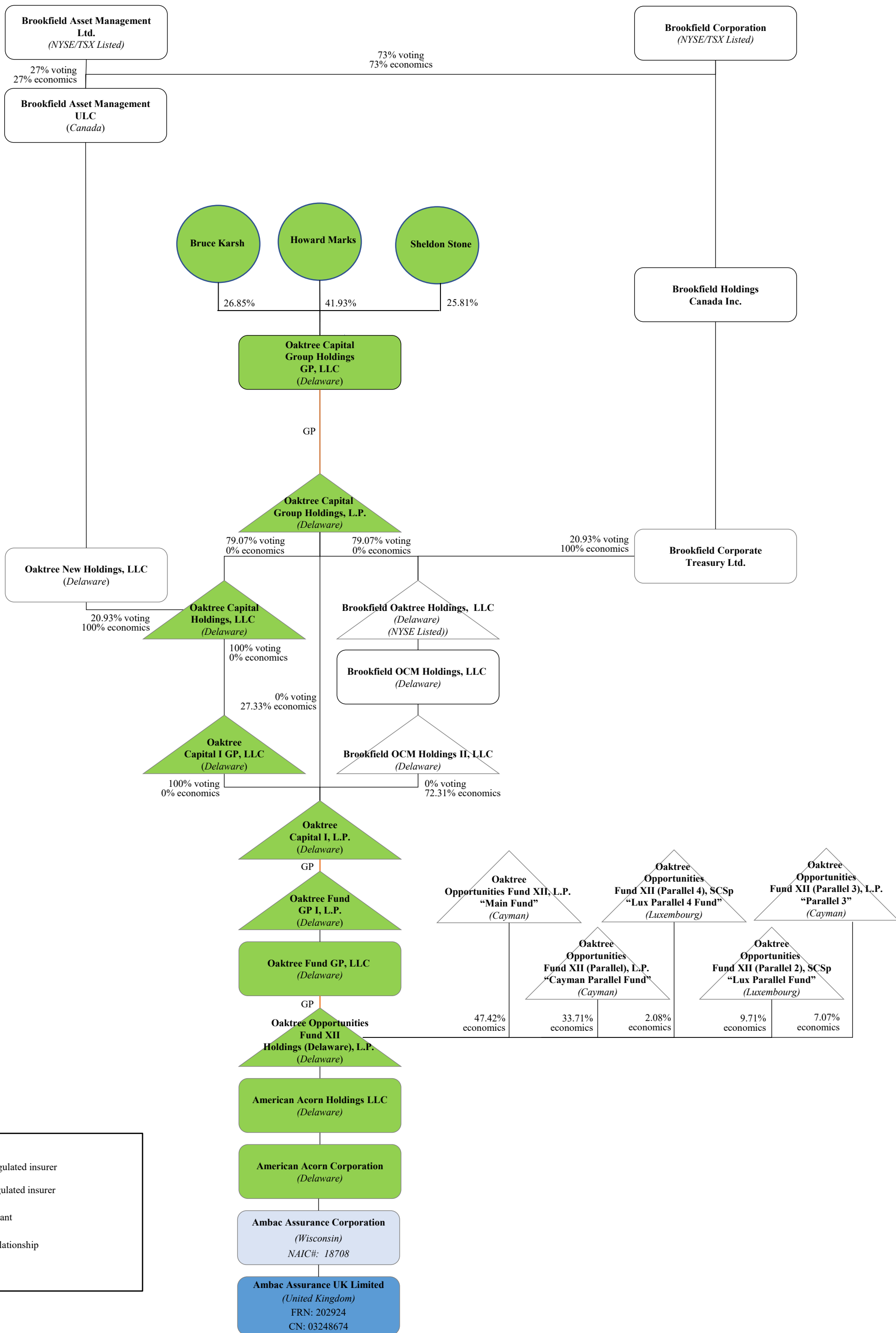


# EXHIBIT B-3

## Post-Closing Organizational Chart of the Applicants and the Domestic Insurer

1. This chart is an abbreviated chart of the Applicants' group structure depicting those entities and individuals in the chain of control.
2. This chart does not depict economic interests held by individuals or entities that would not be deemed a control person (i.e. individuals or entities that hold less than 10% of the voting rights).
3. Unless otherwise indicated, lines = 100% voting and 100% economics.



**KEY**

- UK regulated insurer
- US regulated insurer
- Applicant
- GP Relationship