

EXHIBIT B-1

Pre-Closing Organizational Chart of the Applicants

1. This chart is an abbreviated chart of the Applicants’ group structure depicting those entities and individuals in the chain of control.
2. This chart does not depict economic interests held by individuals or entities that would not be deemed a control person (i.e. individuals or entities that hold less than 10% of the voting rights).
3. Unless otherwise indicated, lines = 100% voting and 100% economics.

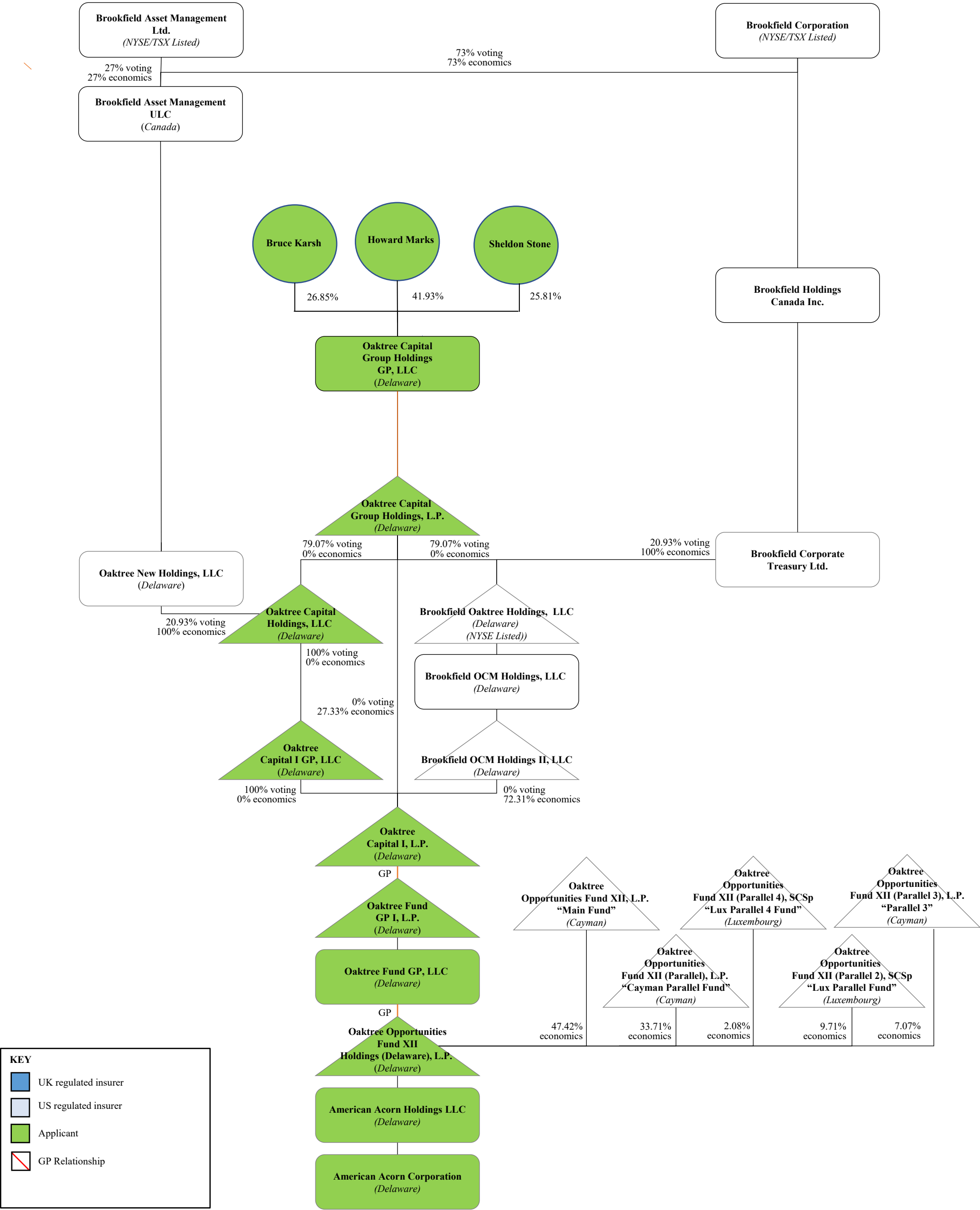
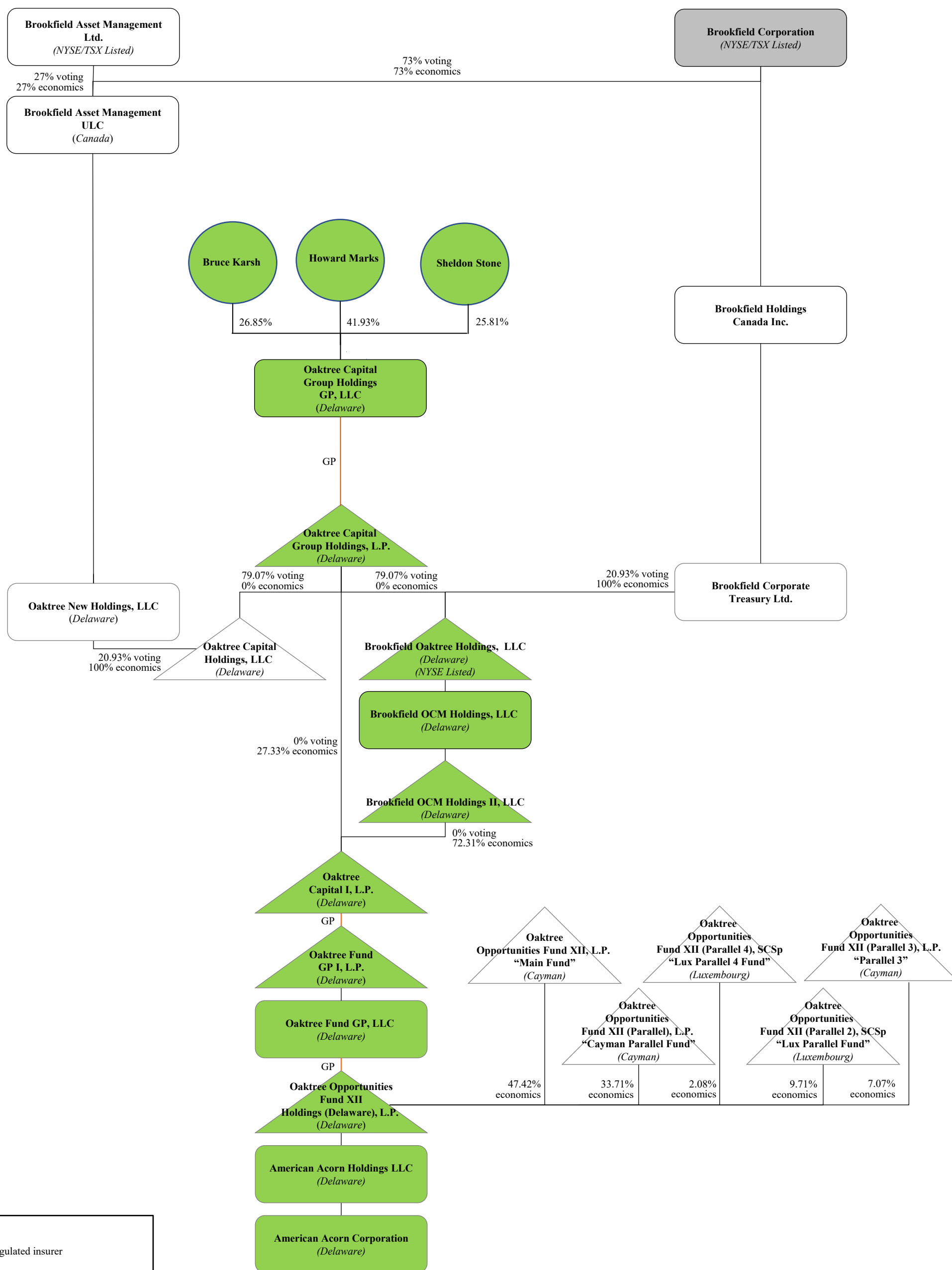


EXHIBIT B-1

Current Pre-Closing Organizational Structure of the Applicants



This chart is being provided for informational purposes. As noted in the Form A Statement, Oaktree is currently undergoing an internal reorganization, proposed to become effective in advance of the Closing, whereby – subject to obtaining certain regulatory approvals – the General Partner of Oaktree Capital I, LP will be changed from Brookfield OCM Holdings II, LLC to Oaktree Capital I GP, LLC, a newly formed subsidiary of Oaktree Capital Holdings, LLC. Brookfield OCM Holdings II, LLC will remain a limited partner of Oaktree Capital I, LP and retain its economic interest therein, but will have no voting control.